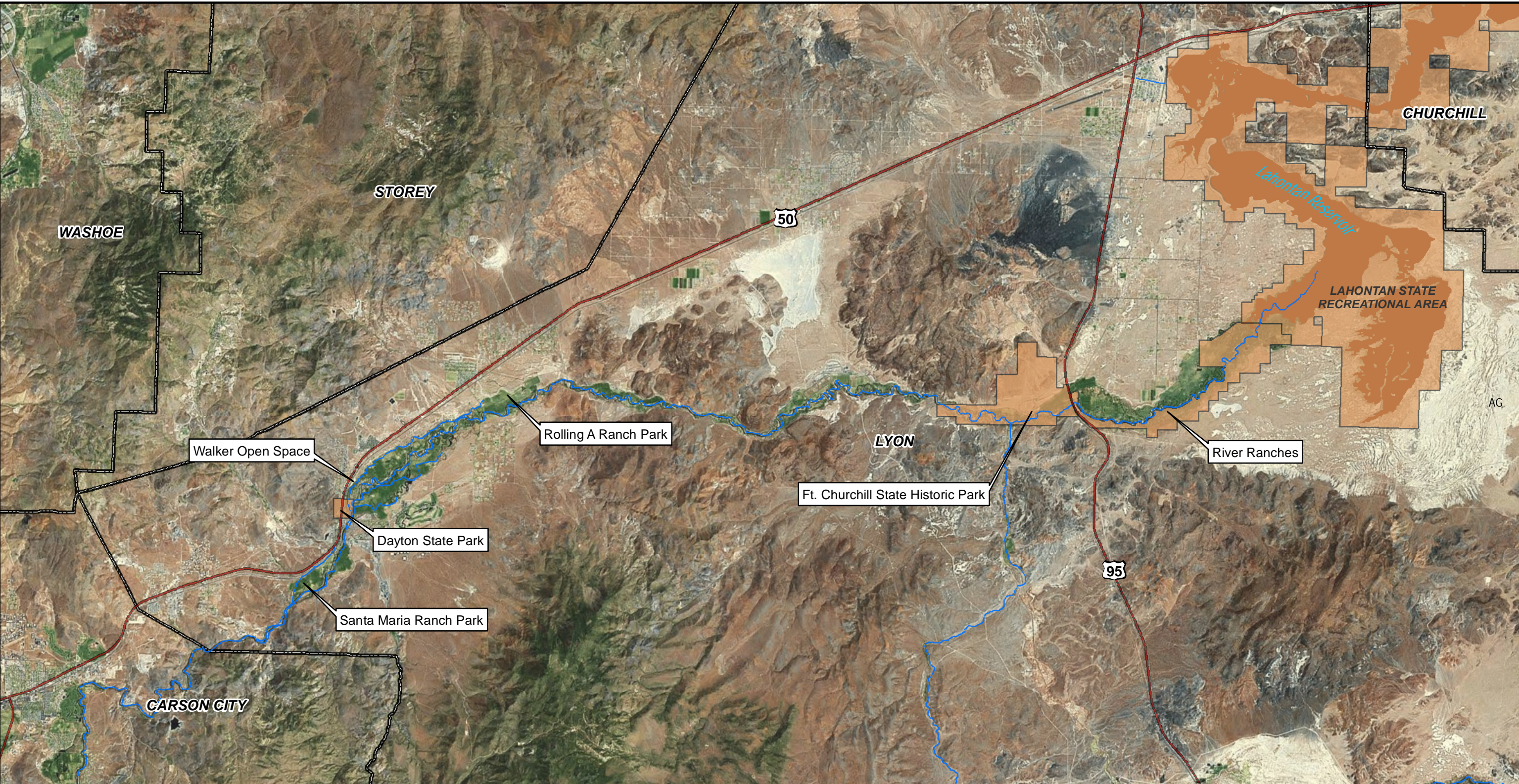


## Figures

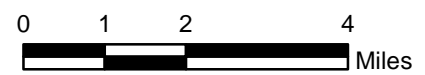
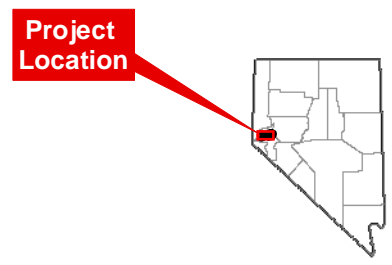
---



File Path:X:\SHARED\Project\_Files\NVLC\_Carson\_River\_Action\_Plan\_BA10264.00\_Mapping\MXD\Habitat\_Conservation\_Plan



BASE MAP: BING Imagery, 2010






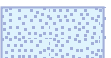
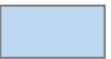


MIDDLE CARSON RIVER  
HABITAT CONSERVATION PLAN

FIGURE 1 MIDDLE CARSON RIVER  
HABITAT MANAGEMENT PLAN AREA





DRAWN BY	CHJ	DATE DRAWN	2/7/12
SCALE	1 inch = 2 miles		





-  AG - Agricultural Land and Pasture
-  DEV - Developed/Disturbed land
-  BSS - Big Sagebrush Shrublands
-  ER - Early Successional Riparian Shrubland
-  CH - Channel
-  OW - Open Water
-  W - Wetland




### Riparian Shrublands

-  RS1 Riparian shrubs are generally contiguous
-  RS2 Riparian shrubs are sparse and patchy

### Mature Cottonwood Willow Forest

-  MF1 Cottonwoods generally <3 tree height apart
-  MF2 Cottonwoods are sparse

### Old Riparian Forest

-  OR1 Cottonwoods generally <1 tree height apart
-  OR2 Cottonwoods >1 tree height apart
-  OR3 Cottonwoods are sparse

## MIDDLE CARSON RIVER HABITAT CONSERVATION PLAN

FIGURE 1A HABITAT LEGEND



DRAWN  
BY

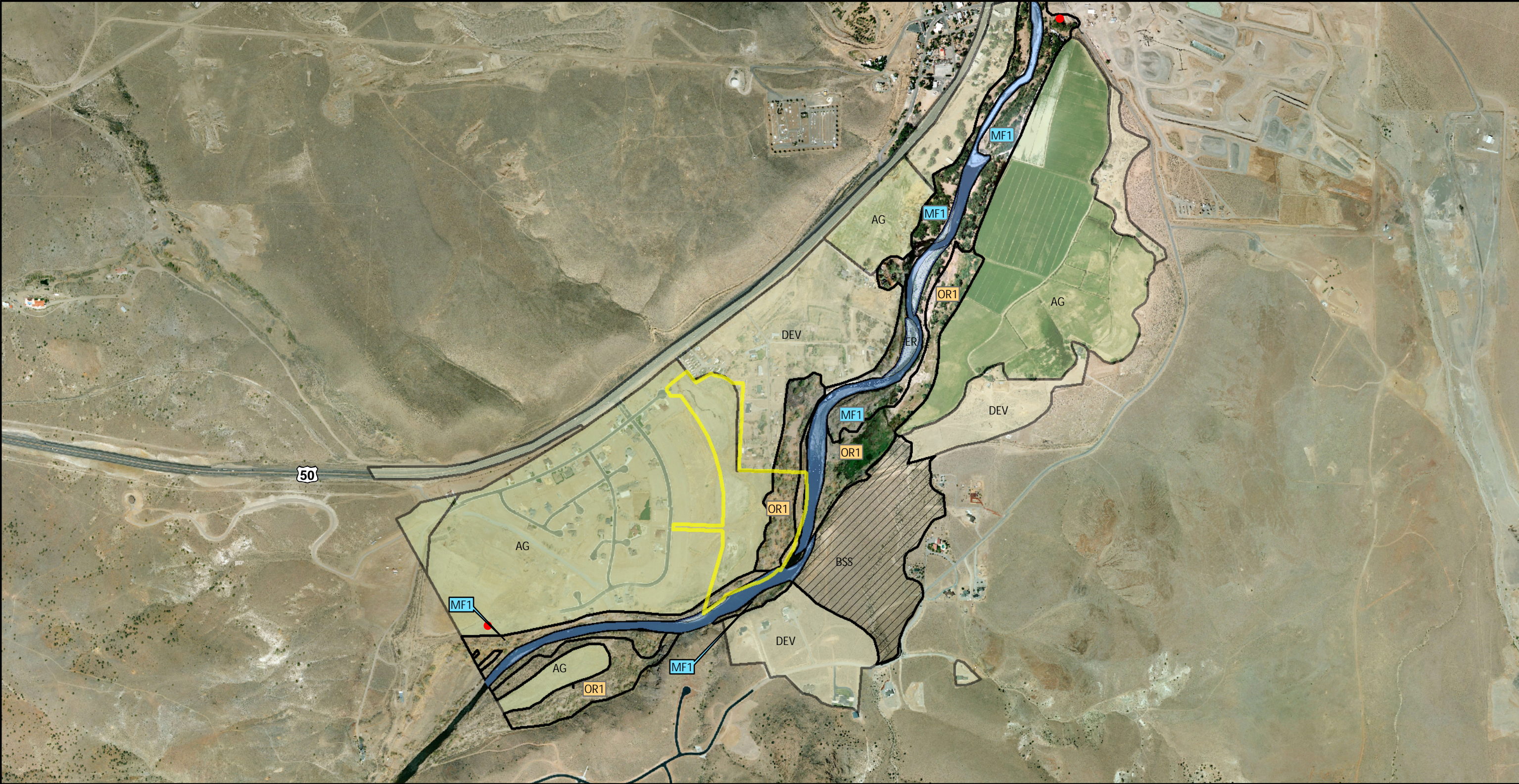
CHJ

DATE  
DRAWN

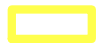

3/9/12



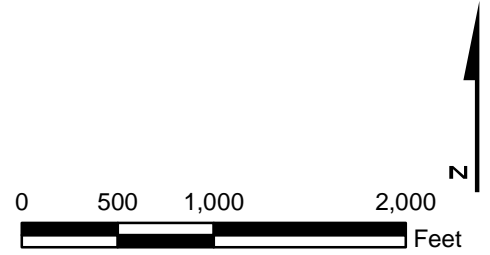
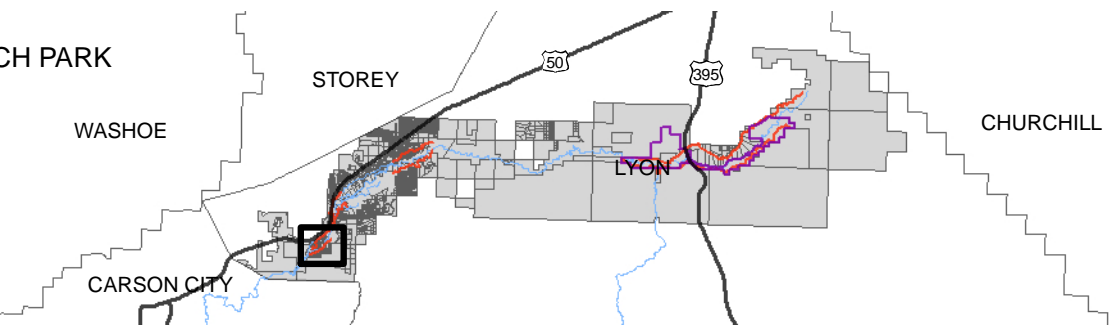
File Path:X:\SHARED\Project\_Files\NVLC\_Carson\_River\_Action\_Plan\_BA10254.00\_Mapping\MXD\Habitat\_Conservation\_Plan



BASE MAP:Lyon County, NV 1-Foot 2007


 LYON COUNTY OPEN SPACE SANTA MARIA RANCH PARK  
 RELICT CHANNEL

See attached legend for habitat type



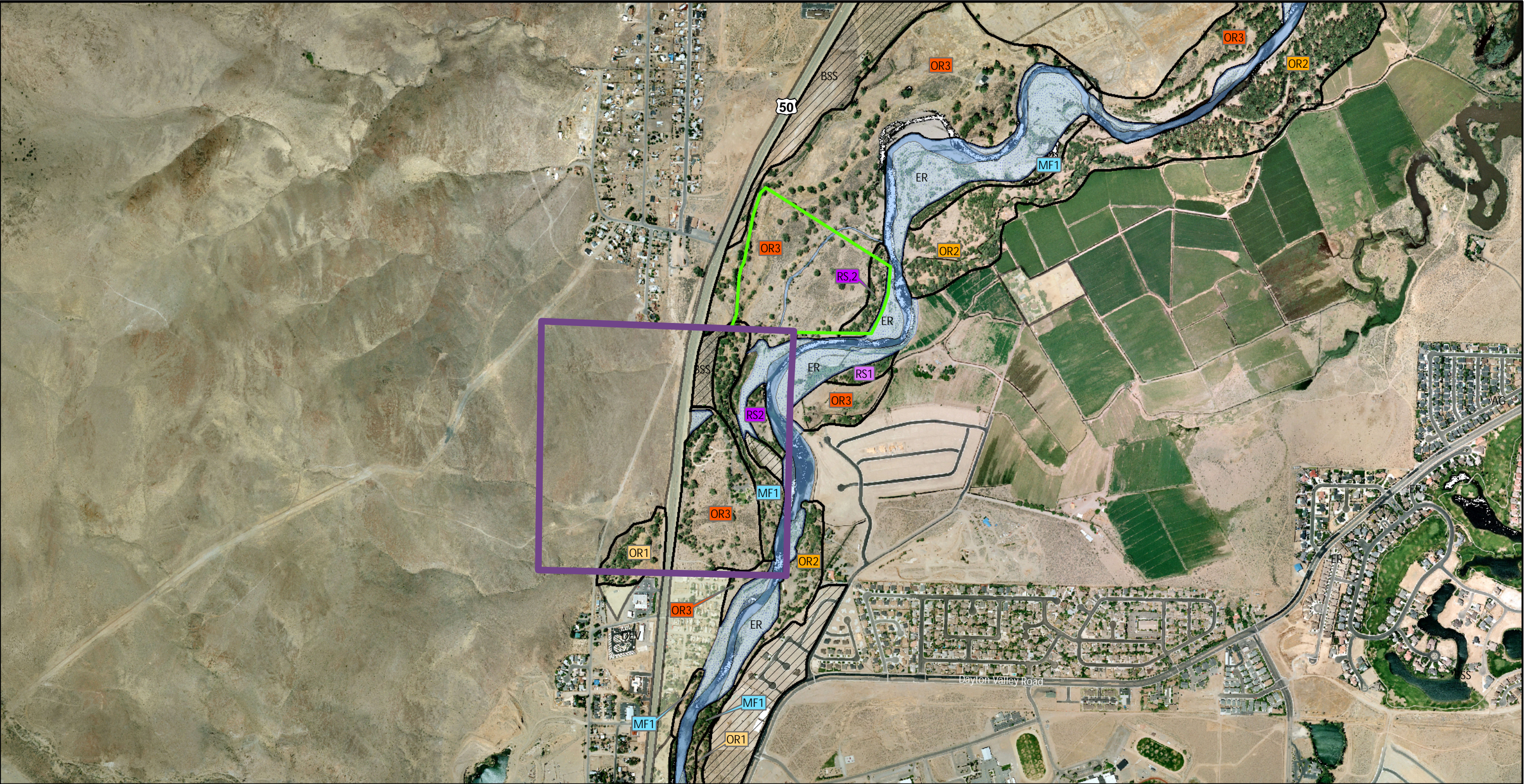
# MIDDLE CARSON RIVER HABITAT CONSERVATION PLAN

FIGURE 2 SANTA MARIA RANCH PARK  
LYON COUNTY OPEN SPACE




	DRAWN BY CHJ	DATE DRAWN 3/9/12
	SCALE 1 inch = 1,000 feet	

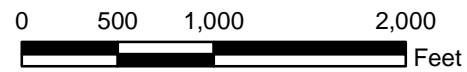
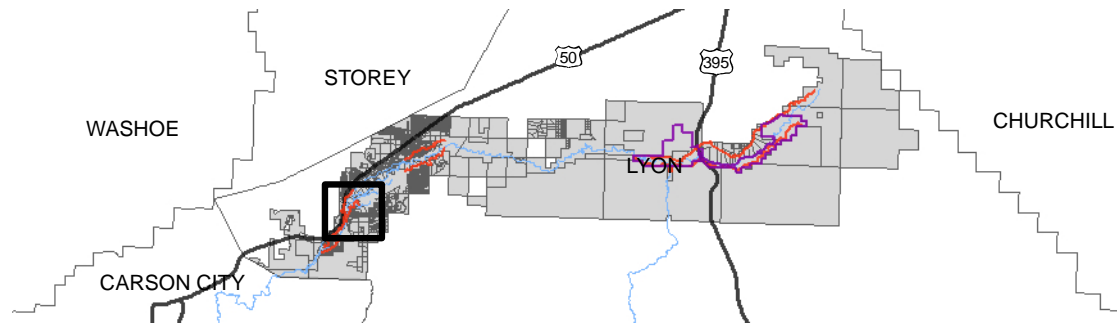


File Path: X:\SHARED\Project\_Files\NVC\_Carson\_River\_Action\_Plan\_BA10254.00\_Mapping\MXD\Habitat\_Conservation\_Plan



BASE MAP: Lyon County, NV 1-Foot 2007

-  DAYTON STATE PARK
  -  LYON COUNTY OPEN SPACE
  -  RELICT CHANNEL
- See attached legend for habitat type*



## MIDDLE CARSON RIVER HABITAT CONSERVATION PLAN

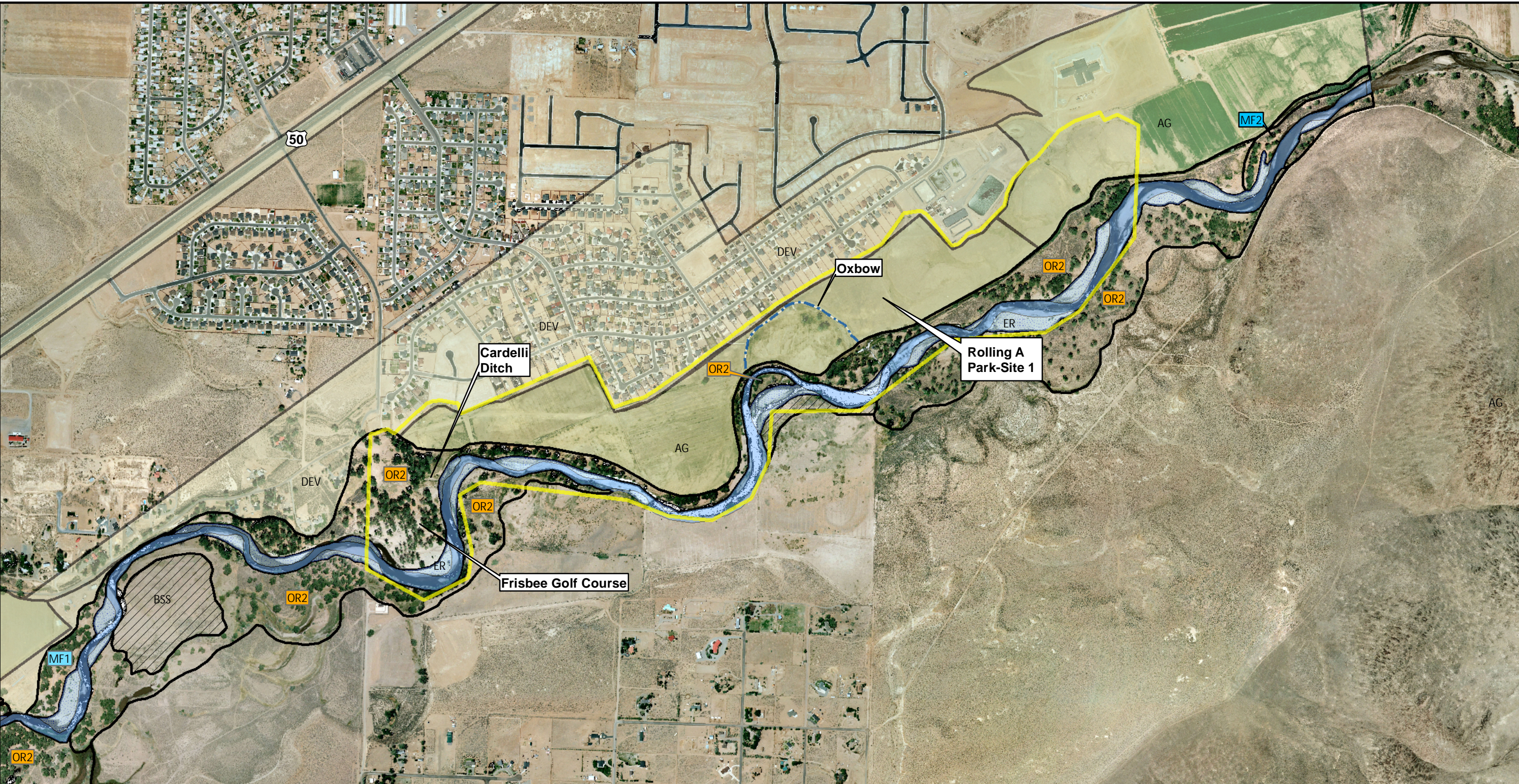
FIGURE 3 DAYTON STATE PARK  
AND WALKER OPEN SPACE



DRAWN BY	CHJ	DATE DRAWN	3/9/12
SCALE	1 inch = 1,000 feet		

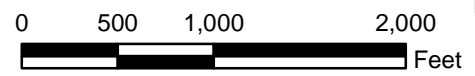
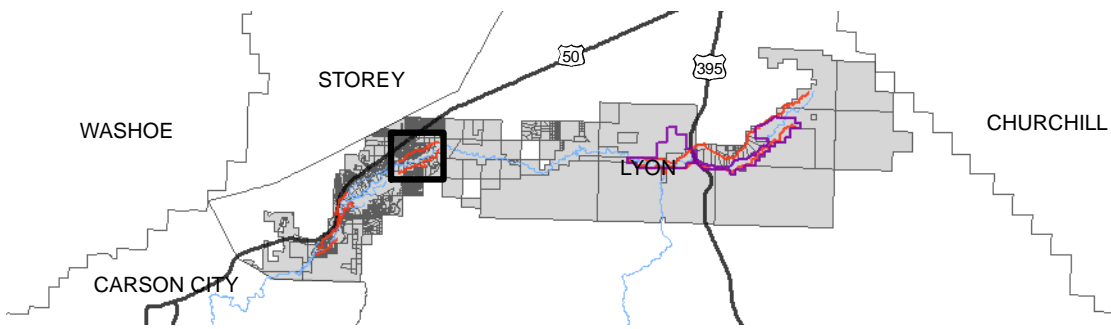


File Path: X:\SHARED\Project\_Files\NVLC\_Carson\_River\_Action\_Plan\_B-A10264.00\_Mapping\MXDs\Habitat\_Conservation\_Plan



BASE MAP: Lyon County, NV 1-Foot 2007

- LYON COUNTY OPEN SPACE
- RELICT CHANNEL
- See attached legend for habitat type



## MIDDLE CARSON RIVER HABITAT CONSERVATION PLAN

FIGURE 4 ROLLING A RANCH PARK  
LYON COUNTY OPEN SPACE



DRAWN BY	CHJ	DATE DRAWN	3/9/12
SCALE	1 inch = 1,000 feet		