

Clear Creek Storm Water Management Program

Adopted



October 18, 2007

Prepared by Carson City Public Works
by Robert D. Fellows, P.E.

Table of Contents

Preface	1
Watershed Facts	2
Watershed Management Program Goal	7
Watershed Management Program Objective	7
MS4 Carson City Permit Requirements	8
Appendix	13

Preface

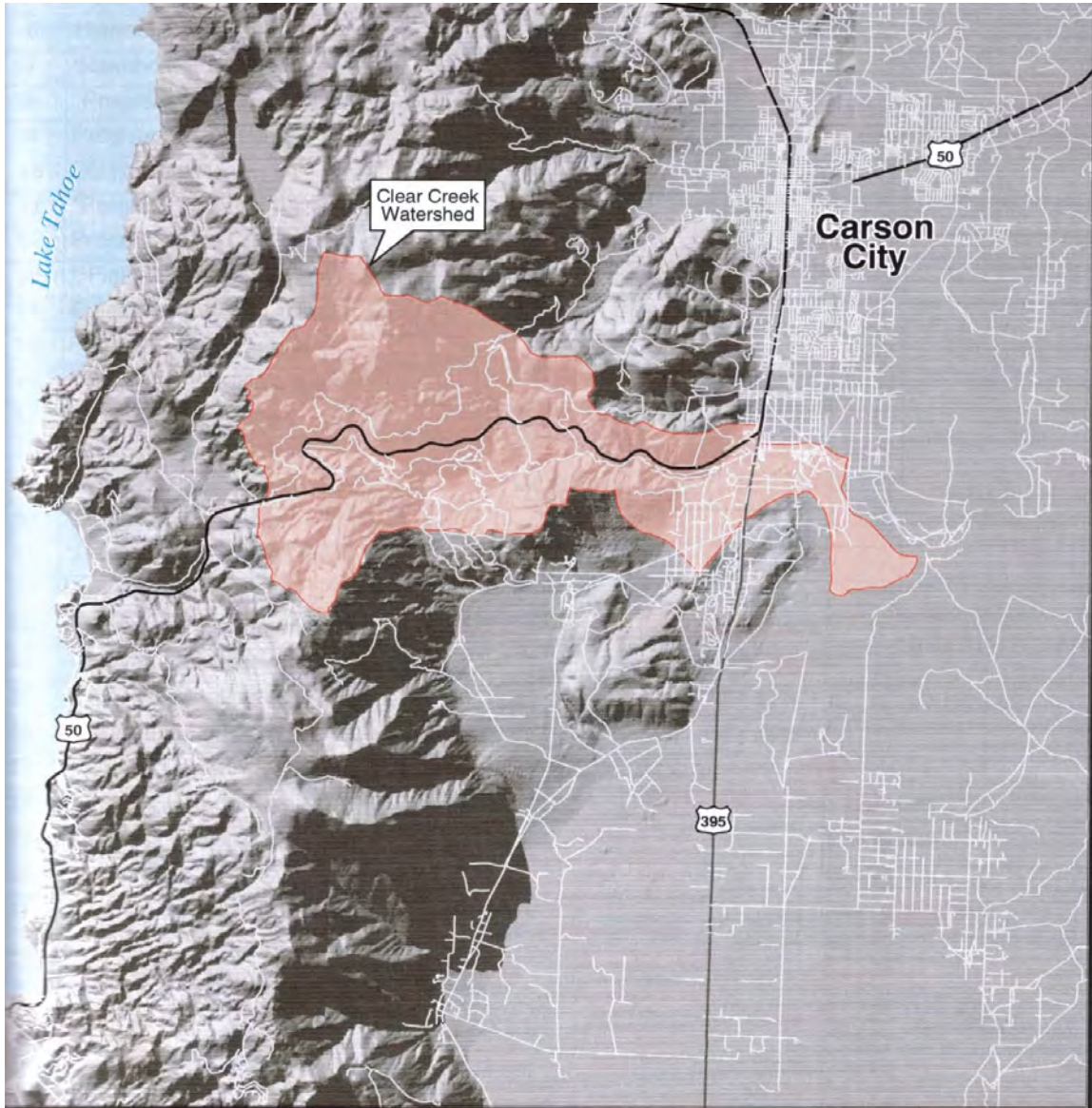
This program sets forth goals, objectives and strategies to be used in combination with Federal, State regulations to improve the water quality in the Clear Creek watershed. This program is intended to offer unified guidance in cooperation with various public and private entities that have an interest within the watershed, such as:

Army Corps of Engineers
Environmental Protection Agency
Nevada Division of Environmental Protection
Nevada Department of Transportation
Carson City
Washoe Tribe of Nevada and California
Nevada Division of State Lands
Bureau of Land Management
United States Bureau of Indian Affairs
Nevada Department of Wildlife
United States Forest Service
Nevada Division of Prisons
Private Landowners
Nevada Department of Forestry
Clear Creek Watershed Council
Douglas County
Indian Hills General Improvement District
USDA - Natural Resources Conservation Service
USDA - Cooperative State Research, Education, and Extension Service
Carson Water Subconservancy District
Carson Valley Conservation District

The program supplements Carson City's main MS4 permit requirements. Many of the City's water quality provisions are already included in the main permit.

Watershed Facts

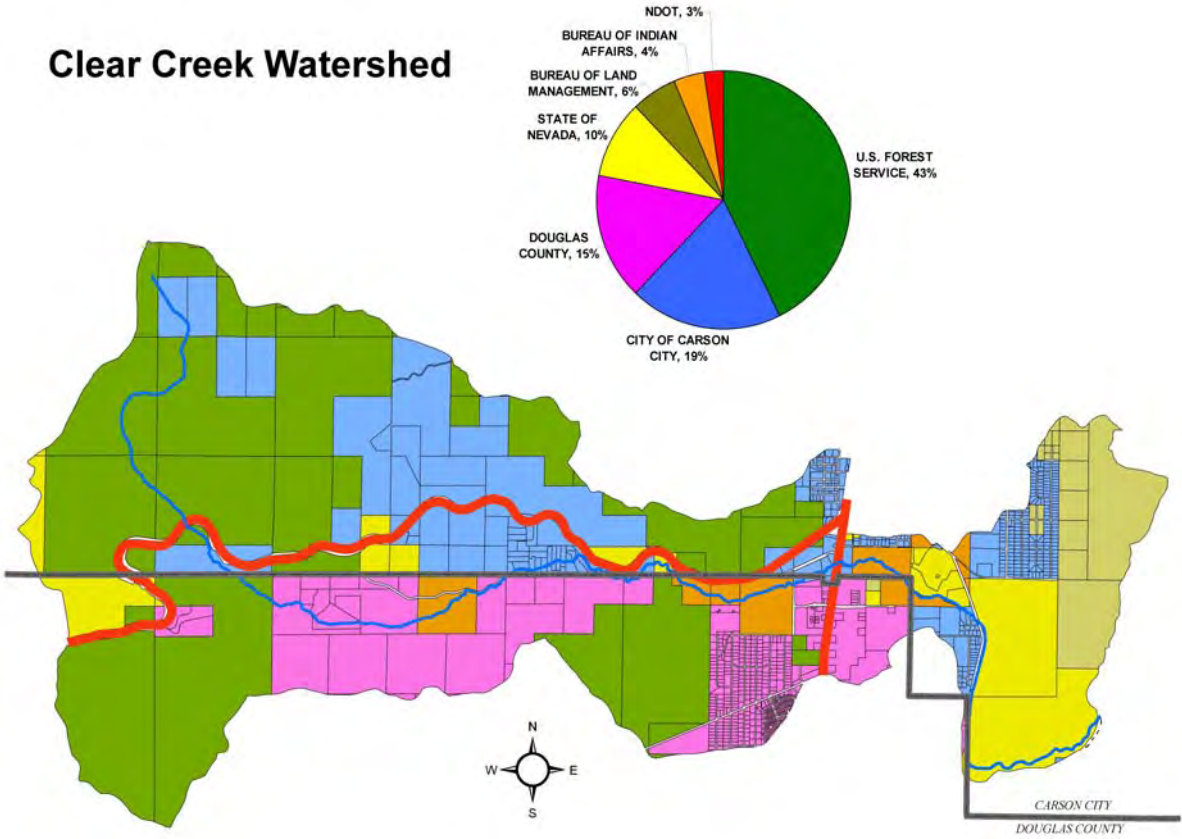
Clear Creek Watershed contains 14,657 acres, or just less than 23 square miles. The lower portion of the watershed includes Prison Hill drainage. The length of the creek is about 14 miles in its longest run.



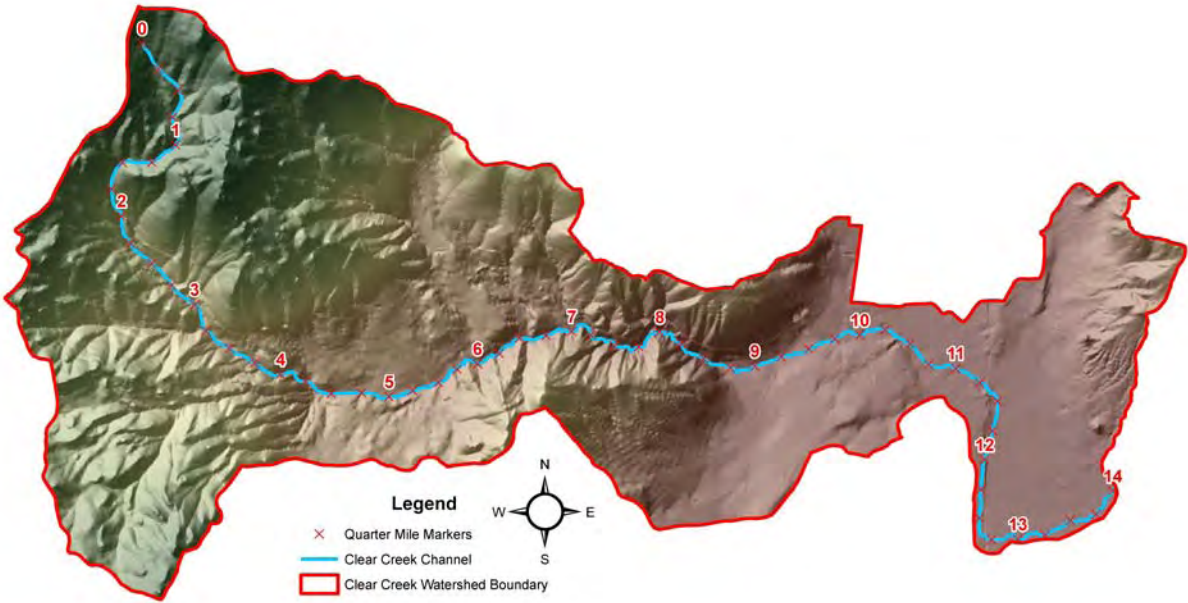
Land jurisdiction within the watershed is divided among various groups. The other ownerships are as follows:

US Forest Service	6,276 acres	43%
Carson City	2,826 acres	19%
Douglas County	2,323 acres	15%
State of Nevada	1,443 acres	10%
BLM	854 acres	6%
Washoe Tribe	555 acres	4%
NDOT	<u>380 acres</u>	<u>3%</u>
	14,657 acres	100%

Clear Creek Watershed

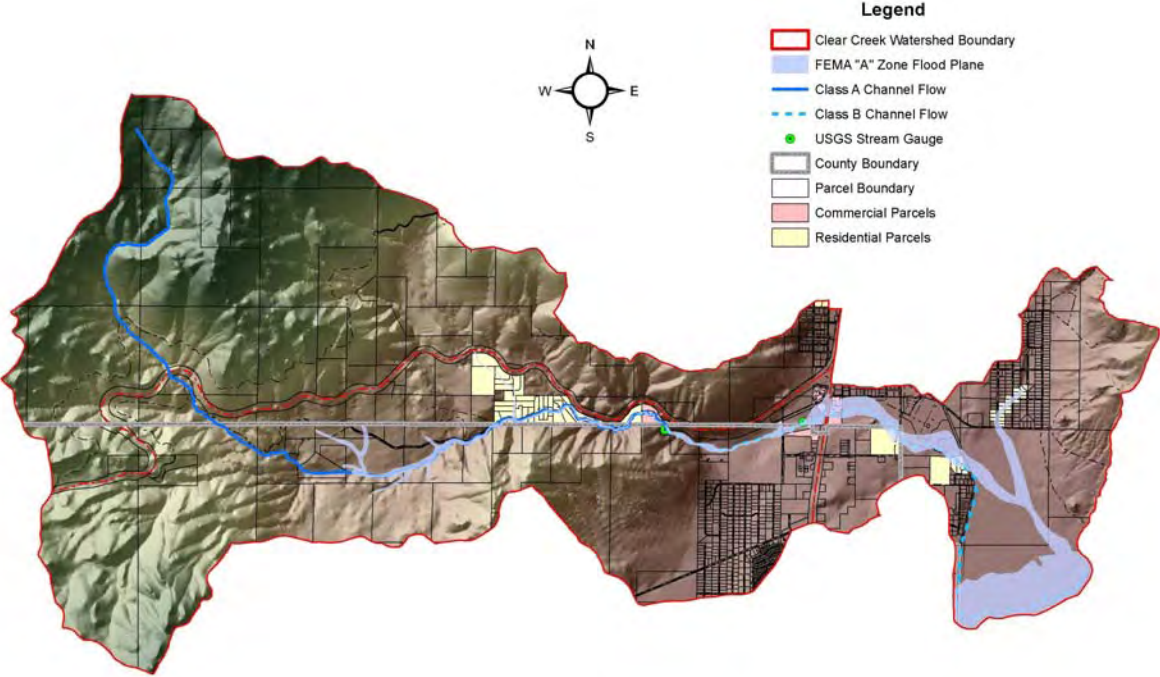


The average slope of the creek is 5.5 percent from its highest elevation of 8707 feet to its terminus with the Carson River at 4635 feet above sea level. The creek is divided into Class “A” and Class “B” waters under Nevada Administrative Code. Class A waters include waters or portions of waters located in areas of little human habitation, no industrial development or intensive agriculture and where the watershed is relatively undisturbed by man’s activity. Class B waters include waters or portions of waters which are located in areas of light or moderate human habitation, little industrial development, light-to-moderate agricultural development and where the watershed is only moderately influenced by man’s activities. The Class “A” portion begins from the upper-most watershed and runs downstream about 8.5 creek miles. The average slope in this reach of the creek is 8.4 percent from an elevation of 8707 feet to 4958 feet. The Class B portion extends to the Carson River for 6.5 creek miles and has an average slope of 0.9 percent.



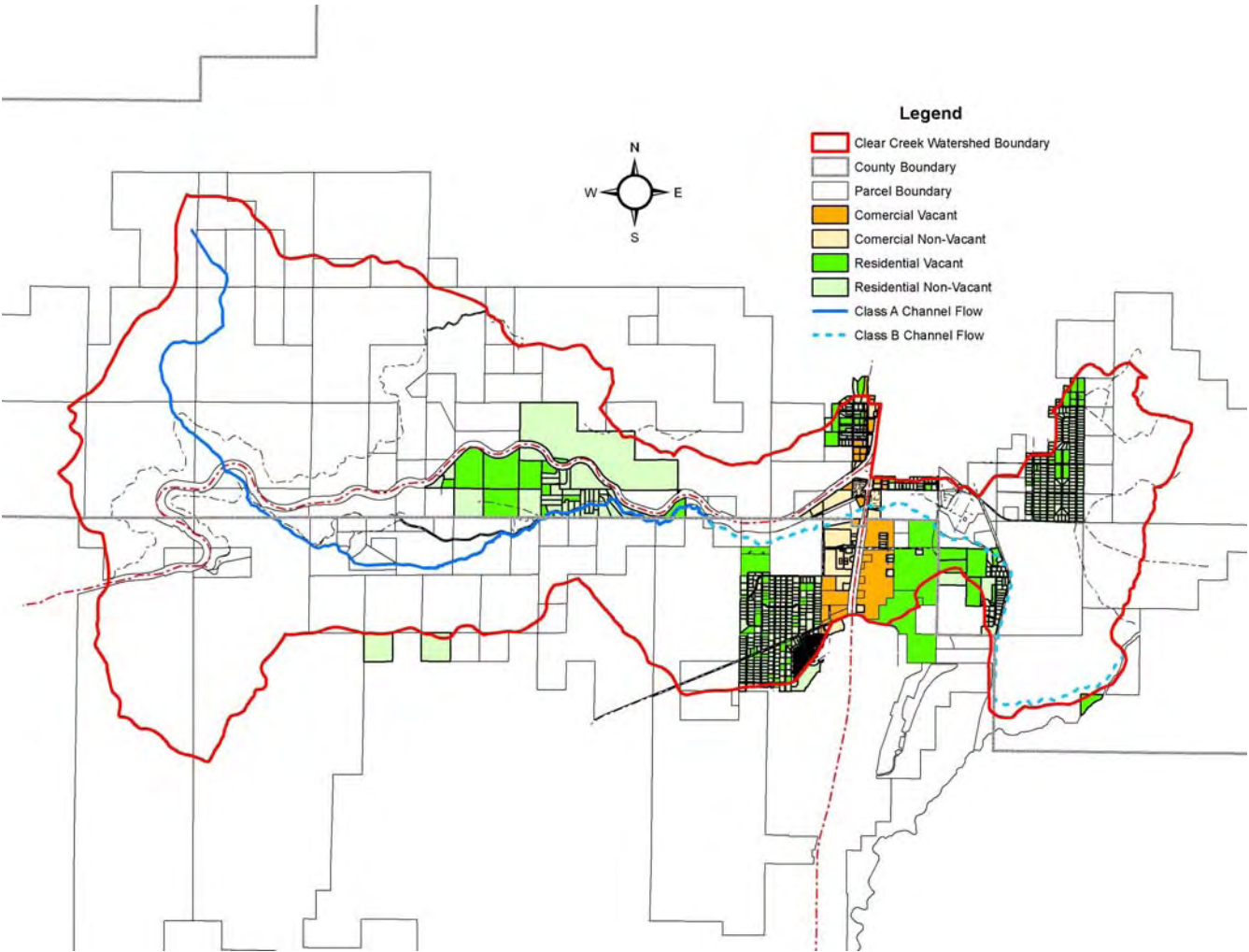
The watershed contains a Federal Emergency Management Agency (FEMA) delineated floodplain or special flood hazard area (SFHA), for both the main watershed and for the Prison Hill contribution. Flows from various storm events are published in the FEMA Flood Insurance Study dated October 16, 1996, for Carson City. The study reports that at approximately 1 mile upstream of US 395 (South Carson Street) the flows are 190 cubic feet per second (cfs) for a 10-year peak storm, 1,200 cfs for a 50-year storm, 2,450 cfs for a 100-year storm, and 11,300 cfs for a 500-year storm. This location corresponds to a USGS gauge station (10310500) at which flows have been recorded during the past 32 years. The average mean flow for the creek is 5.5 cfs. The highest peak flow was recorded at 266 cfs on January 2, 1997. The station was installed in 1948.

Land uses on properties which lie within the SFHA consist of 59 residential uses and six commercial uses in Carson City and one residential use, one commercial use in Douglas County.



Within the Clear Creek watershed, there are no planned or zoned industrial properties in either Carson City or Douglas County. As of the summer of 2007, the breakdown of non-vacant (occupied) to vacant (developed) properties in Carson City and Douglas County areas is as follows:

<u>Non-vacant</u>	<u>Vacant</u>	<u>Type</u>
304	57	Residential - Carson City
22	22	Commercial - Carson City
438	43	Residential - Douglas County
21	17	Commercial - Douglas County



Watershed Management Program Goal

Protect, conserve and restore the Clear Creek Watershed through water quality education, storm drain maintenance, and low impact development.

Watershed Management Program Objective

Develop, implement, and enforce a reduction of pollutants to the maximum extent practicable to protect water quality and to satisfy the appropriate water quality requirements of the Clean Water Act.

Watershed Management Program Strategies

Below are possible program strategies that support the watershed objective and are to be considered by all jurisdictions to promote the watershed goal:

- Educate property owners about consistent maintenance of their private storm water systems to reduce sediment loads to the creek and develop a system to remind them periodically.
- Track effective Best Management Practices (BMPs) used in the watershed and utilize the BMPs for future construction projects.
- Notify property owners about opportunities for free disposal of used motor oil.
- Evaluate new dirt roadway creation from fire break construction, 4-wheel drive and ATV use.
- Provide effective drainage and erosion protection for existing roadways.
- Require pretreatment of storm water for high hazard property uses such as gasoline stations.
- Where possible, expand riparian buffers next to the creek to 50 feet beyond the 100-year floodplain boundary .
- Monitor, track, and control noxious weeds, trash and litter within the watershed.
- Enhance water-quality-friendly recreation opportunities within the watershed.

- Enhance the creek zone and riparian habitat by stabilizing and restoring the creek banks, planting trees, limiting stream obstructions and unnatural structures, enhancing wildlife habitat, and limiting direct livestock contact within the creek zone.
- As much as practicable, use natural means to treat pollutants.
- Maintain flood corridors free from flow-limiting structures.
- Where possible, create open space easements to protect creek riparian buffers.
- Share watershed data among all jurisdictions.
- Prevent sediment and pollutants from the 2-year 24-hour storm event from entering the creek.

MS4 Carson City Permit Requirements

Watershed Management Practices:

Current Practice: Carson City has initiated ordinances during the past five years to aid in the management of storm water within the city. Carson City Municipal Code Chapter 12, Water, Sewerage and Drainage, contains three Chapters that aid in improving water quality. Chapter 12.17 Storm Water Service Charges created a storm drain utility to help fund four areas of need, NPDES Phase 2 Storm Water Program, the Flood Management Program, Public Works operations, and capital projects, including the latest storm water improvements within and associated with the Carson City Freeway. Chapter 12.18 Erosion and Sediment Control sets up enforcement measures for the city engineer to take action against persons degrading water quality during construction activities and authorizes action for post construction maintenance of private storm drain facilities. Chapter 12.19 Storm Water System Illicit Discharges and Connections allows the city to take action against any persons discharging pollutants into the storm drain system. These ordinances are enforced city-wide, including within the Carson City portion of the Clear Creek Watershed.

The City supports educational opportunities and funding through the Clear Creek Watershed Council by assisting in the council's newsletter, sampling supplies, and creek clean-up day. The NPDES permit coordinator is a member of the council's board.

Proposed Additional Practice: A proposed management practice in addition to those already implemented is as follows:

- Coordinate among the various jurisdictions within the watershed to

promote a unified watershed storm water management plan. The various jurisdictions include United States Army Corps of Engineers, United States Environmental Protection Agency, Nevada Division of Environmental Protection, Nevada Department of Transportation, Carson City, Washoe Tribe of Nevada and California, Bureau of Land Management, United States Bureau of Indian Affairs, Nevada Division of State Lands, Nevada Department of Wildlife, United States Forest Service, Nevada Division of Prisons, Private Landowners, Nevada Department of Forestry, Clear Creek Watershed Council, Douglas County, Indian Hills General Improvement District, USDA - Natural Resources Conservation Service, USDA - Cooperative State Research, Education, and Extension Service, Carson Water Subconservancy District, and Carson Valley Conservation District.

Implementation of Watershed Management Practices:

Current Implementation: The City implements their ordinances within a number of departments within the city. Development Services, which includes the Permit Center, reviews proposed developments and construction plans to the standards that are set by ordinances. Development Service also inspects projects during construction to ensure compliance to ordinances. This department also includes code enforcement, which works hand in hand with the City's District Attorneys office to issue citations and to litigate enforcement actions. The Department of Public Works, Environmental Services section also aids in enforcement of water quality issues through monitoring of the city's water system, hazardous spills, and storm drain illicit discharges. The Assessor's Office assists in the process by allowing the city to encumber property for costs associated with maintenance of private storm drainage facilities when the owner does not act in a timely manner.

Proposed Additional Implementation: Implementation of program strategies involves a coordination effort among various entities that have jurisdiction within the watershed beginning with the City then continuing to the Clear Creek Watershed Council and to other jurisdictions.

Stormwater Control Techniques, System Design and Engineering Methods:

Current Methods: The City utilizes current pollution control techniques from Division 13 of the Carson City Development Standards to protect Clear Creek. These standards have been selected from a number of Stormwater Manuals from the western states such as the *California Stormwater BMP Handbook, Construction, 2003*; *Stormwater Management Manual for Western Washington*; and *Handbook of Best Management Practices, NDEP* to name a few. Division 13 can be viewed in its entirety on the City's web site. BMPs within this Division are presented in an easy to use format consisting of the Purpose, Condition of Use, Design and Installation, and Maintenance. There are 12 minimum

control measures outlined in Division 13. Refer to pages Division 13(5) through page Div. 13(11) for specifics.

Proposed Additional Methods: Permanent storm drainage facilities for protection of water quality fall under Division 14, Storm Drainage of the Carson City Development Standards. This Division is scheduled to be modified and updated in 2008 to include specific design criteria concerning Clear Creek and other watersheds within Carson City.

Proposed engineering methods beyond those existing in the Development Standards include:

- Amend the Development Standards, Division 14, Storm Drainage to require that “Developments of any size that lie within the Clear Creek watershed shall construct sediment basin(s) or other approved structures or devices that provide storage and treatment for a calculated volume of runoff from a two (2) year, 24 hour storm or 3,600 cubic feet of storage per acre drained. These water quality structures are encouraged to be disconnected from the higher frequency storm control structures.” and
- Amend the Development Standards, Division 14, Storm Drainage to require that “Soils where vegetation has been removed from slopes within the Clear Creek Watershed shall be stabilized by permanent means and be maintained for up to 3 years or 70 percent grow-back period which ever is less.”

These additions to the Standards will attempt to address some of the program strategies and provide at least the minimum requirements stated in the MS4 Carson City permit in the short term. The Carson City MS4 permit states “At a minimum, silt fences, vegetative buffer strips, or equivalent sediment controls are required for all downslope boundaries (and for those side slope boundaries deemed appropriate as dictated by individual site conditions) of a construction area, unless a sediment basin providing storage for a calculated volume of runoff from a two (2) year, 24 hour storm or 3,600 cubic feet of storage per acre drained, shall be provided.” The two (2) year, 24-hour storm accounts for 87% of the rainfall within the watershed. See the Appendix for “Rainfall Analysis for Water Quality Design Storm in Carson City” from the Carson City Wastewater Reclamation Plant Flow Analysis study. The 2-year, 24-hour storm is a reasonable storm to target for water quality protection.

Implementation Schedule:

Short term activities related to the City’s general MS4 permit and the Clear Creek Storm Water Management Program Addition include:

- Code updates, which are already in progress and are anticipated to be completed by spring 2008. Also, Carson City is in the

process of revising and updating other sections of the Development Standards and Municipal Codes on a larger scale. This process takes a great deal of time, effort and public involvement.

- Implementation of many of the requirements was started in 2002, including the storm water utility, public education and awareness, a stream stewardship program, and new ordinances. The newest requirements for Clear Creek have been applied by City projects within the watershed and have been incorporated in private developments as well, but, by 2008, specific requirements will be codified and enforceable.
- Maintenance of the short-term activities relates to maintaining relationships with other jurisdictions and building consensus on consistent methods to move forward on the goal of “Protect, conserve and restore the Clear Creek Watershed through water quality education, storm drain maintenance and low impact development.”

Long-term activities related to the general MS4 and separate Clear Creek Storm Water Management Program is not so much time related as it is subject to the jurisdictions within the Watershed working together. Implementation and progress should be measured by the methods adopted by the various jurisdictions that are consistent and work to improve the whole watershed.

Monitoring Program:

The City believes that the health of the creek is directly related to the maintenance of private and public drainage facilities within the watershed. Instead of waiting for a problem to occur at the stream, the program contemplates working with property owners throughout the year to educate and assist them in taking ownership of the health of Clear Creek. This proactive monitoring program will supplement the current sampling programs by NDOT, Douglas County, Washoe Tribe, USGS and others. Collaboration among the various agencies about lack of watershed maintenance and sampling data spikes should be followed up with all jurisdictions having control over problem areas.

Commercial facilities within Clear Creek Watershed:

Commercial properties within the Clear Creek watershed should be monitored for potential impacts by the appropriate jurisdiction. Each jurisdiction should then share its data with the other MS4 permit holders to create a unified tracking map to head off potential impacts to the creek. Zoning and master plan designations will be utilized to track these

properties and whether they are vacant or occupied by high-risk business activity.

Persons Responsible for Implementing or Coordinating the Storm Water Management Program:

This program will be administered by the NPDES permit coordinator who in turn works directly for the Public Works Department. Currently in 2007, the NPDES permit coordinator is Robert D. Fellows, P.E. and the Director of Public Works is Andy Burnham.

Appendix

USGS Water Data Report 2005 Clear Creek

Rainfall Analysis for Water Quality Design Storm in Carson City

Property Owners with Clear Creek Watershed

Class A and B Stream Requirement for Clear Creek



Water-Data Report NV-2005

10310518 CLEAR CREEK AT FUJI PARK AT CARSON CITY NV

CARSON RIVER BASIN, UPPER CARSON RIVER BASIN

LOCATION.--Lat 39°06'52", long 119°46'32" referenced to North American Datum of 1927, in SW ¼ SE ¼ sec.31, T.15 N., R.20 E., Carson City County, Hydrologic Unit 16050201.

WATER-QUALITY RECORDS

**WATER-QUALITY DATA
WATER YEAR OCTOBER 2004 TO SEPTEMBER 2005**

Part 1 of 3

[Remark codes: <, less than.]

Date	Time	Sample type	Instantaneous discharge, cfs (00061)	Calcium water, fltrd, mg/L (00915)	Magnesium, water, fltrd, mg/L (00925)	Potassium, water, fltrd, mg/L (00935)	Sodium, water, fltrd, mg/L (00930)	ANC, wat unf fixed end pt, lab, mg/L as CaCO3 (90410)	Chloride, water, fltrd, mg/L (00940)	Fluoride, water, fltrd, mg/L (00950)	Silica, water, fltrd, mg/L (00955)	Sulfate water, fltrd, mg/L (00945)
Dec												
08...	1500	Environmental	8.6	--	--	--	--	--	--	--	--	--
08...	1530	Environmental	--	--	--	--	--	--	--	--	--	--
Apr												
27...	1400	Environmental	8.6	--	--	--	--	--	--	--	--	--
Jun												
09...	1500	Environmental	7.2	--	--	--	--	--	--	--	--	--
18...	1045	Environmental	--	18.1	2.89	1.91	9.01	73	6.12	<.1	23.2	.8
29...	1500	Environmental	2.9	15.5	2.77	1.82	9.67	58	10.0	<.1	22.5	.7
Aug												
18...	1045	Environmental	1.3	--	--	--	--	--	--	--	--	--

10310518 CLEAR CREEK AT FUJI PARK AT CARSON CITY NV—Continued

WATER-QUALITY DATA
WATER YEAR OCTOBER 2004 TO SEPTEMBER 2005

Part 2 of 3

[Remark codes: <, less than.]

Date	Ammonia + org-N, water, fltrd, mg/L as N (00623)	Ammonia + org-N, water, unfltrd mg/L as N (00625)	Ammonia water, fltrd, mg/L as N (00608)	Nitrite + nitrate water, fltrd, mg/L as N (00631)	Nitrite water, fltrd, mg/L as N (00613)	Ortho- phos- phate, water, fltrd, mg/L as P (00671)	Phos- phorus, water, fltrd, mg/L (00666)	Phos- phorus, water, unfltrd mg/L (00665)	Iron, water, fltrd, ug/L (01046)	Mangan- ese, water, fltrd, ug/L (01056)	Suspnd. sedi- ment, sieve diametr percent <.063mm (70331)	Sus- pended sedi- ment concen- tration mg/L (80154)	Sus- pended sedi- ment dis- charge, tons/d (80155)
Dec 08...	--	--	--	--	--	--	--	--	--	--	--	66	1.5
08...	--	--	--	--	--	--	--	--	--	--	.0	--	--
Apr 27...	--	--	--	--	--	--	--	--	--	--	.0	16	.37
Jun 09...	--	--	--	--	--	--	--	--	--	--	.0	15	.29
18...	.10	.14	<.010	.018	<.002	.011	.020	.040	30	7.5	--	--	--
29...	.14	.19	<.010	.017	<.002	.015	.022	.053	212	12.3	--	10	.08
Aug 18...	--	--	--	--	--	--	--	--	--	--	--	7	.02

WATER-QUALITY DATA
WATER YEAR OCTOBER 2004 TO SEPTEMBER 2005

Part 3 of 3

[Remark codes: <, less than.]

Date	Bedload sedi- ment, sieve diametr percent <.063mm (80226)	Bedload sedi- ment, sieve diametr percent <.125mm (80227)	Bedload sedi- ment, sieve diametr percent <.25mm (80228)	Bedload sedi- ment, sieve diametr percent <.5 mm (80229)	Bedload sedi- ment, sieve diametr percent <1 mm (80230)	Bedload sedi- ment, sieve diametr percent <2 mm (80231)	Bedload sedi- ment, sieve diametr percent <4 mm (80232)	Bedload sedi- ment, sieve diametr percent <8 mm (80233)
Dec 08...	--	--	--	--	--	--	--	--
08...	.0	.0	6	41	65	82	92	100
Apr 27...	.0	.0	6	32	51	69	90	100
Jun 09...	.0	.0	3	21	35	50	78	100
18...	--	--	--	--	--	--	--	--
29...	--	--	--	--	--	--	--	--
Aug 18...	--	--	--	--	--	--	--	--

APPENDIX B

RAINFALL ANALYSIS FOR WATER QUALITY DESIGN STORM IN CARSON CITY

Introduction

Carson City Public Works staff requested an analysis of historical rainfall data in Carson City to determine the amount of runoff that would be treated by stormwater treatment facilities designed for varying rainfall events. The analysis described in this appendix is based on the requirements developed by the Washington State Department of Ecology (Ecology) for stormwater treatment, which may be considered appropriate for Carson City. Ecology requires the treatment of 90% of stormwater runoff in order to remove about 80% of the total suspended solids contained in the runoff. Treatment of larger runoff volumes was considered to be inappropriate as the incremental costs of larger treatment facilities were judged to exceed incremental benefits.

The 90th percentile of runoff volume can be calculated either by a continuous runoff model or by using a water quality design storm. The water quality design storm has been estimated as 72% of the 2-year, 24-hour rainfall volume for areas in Western Washington, which is wetter than Carson City. The water quality design storm percentage for areas in Eastern Washington ranges from 66% to 70%, which has arid conditions more similar to Carson City.

The following approach is based on the assumption that there is a direct relationship between rainfall and runoff in Carson City. Rather than continuously simulating runoff for a long period of record, it is assumed that all historical rainfall results in runoff and that the volume of runoff is equal to the rainfall volume. This assumption will result in an over-estimation of runoff volumes because infiltration of rainfall into the ground is disregarded. However, the data of significance are the high rainfall events during wet weather and the amount of infiltration is likely relatively small. Regardless, this approach will provide a basis to estimate the effectiveness of stormwater treatment facilities designed for different rainfall events.

Historical Carson City Rainfall

The data base for this analysis was daily rainfall for Carson City for the period of record from July 1, 1948 through December 31, 2006 reported for the NOAA National Weather Service station no. 26-1485. The daily data was obtained from the Weather Source website.

Rainfall Analysis for Water Quality Design Storm in Carson City

Statistical summaries for the rainfall data are available from NOAA. NOAA estimates for the rainfall volumes for 24-hour duration events are:

- 1-year frequency – 1.19 inches
- 2-year frequency – 1.49 inches
- 5-year frequency – 1.89 inches
- 10-year frequency – 2.21 inches.

The highest 24-hour rainfall reported for the period of record was 3.84 inches which occurred on January 14, 1980.

Results

The total rainfall for the 58 year period of record was 619.43 inches based on reported rainfall for 2,675 days. Ninety percent of the total rainfall is 557.5 inches. The daily rainfall was sorted from smallest to the largest to determine an accumulated rainfall volume associated with each daily event. Based on the accumulated volumes, the accumulated volume of 557.5 inches occurred at the daily rainfall of 1.6 inches, which has occurred twice during the period of record: January 30, 1963 and December 12, 1995. There were 28 days during the period of record when the rainfall volume exceeded 1.6 inches which represents about 1% of the days having rainfall events.

The relationship for cumulative rainfall versus 24-hour rainfall is shown in Figure B-1. Ninety percent of the total rainfall has occurred for events less than or equal to the 24-hour rainfall of 1.6 inches. In other words, if a stormwater treatment facility were designed for a 24-hour storm of 1.6 inches, it would treat runoff generated from all smaller 24-hour storms or 90% of the historical 24-hour rainfall events. As indicated in Figure B-1, the 1.6 inch event is about 0.1 inches greater than the 2-year, 24-hour rainfall event for Carson City.

If 70% of the 2-year, 24-hour rainfall is assumed to be appropriate in Carson City, the water quality design storm would be slightly above 1.0 inches. About 80% of historical rainfall would be treated by facilities designed for the 24-hour storm of 1-inch, according to Figure C-1. Thus, a reduction of the design storm from 100% to 70% of the 2-year 24-hour event results in a decrease of about 8 to 9% of the cumulative rainfall volume being treated. It is probably reasonable to assume that a 10% reduction in total suspended solids would also occur. Whether that reduction would be from 90% to 80% or from 80% to 70% is unknown, but the resulting total suspended solids reduction would still be substantial.

Rainfall Analysis for Water Quality Design Storm in Carson City

24-Hour Rainfall Occurrence in Carson City

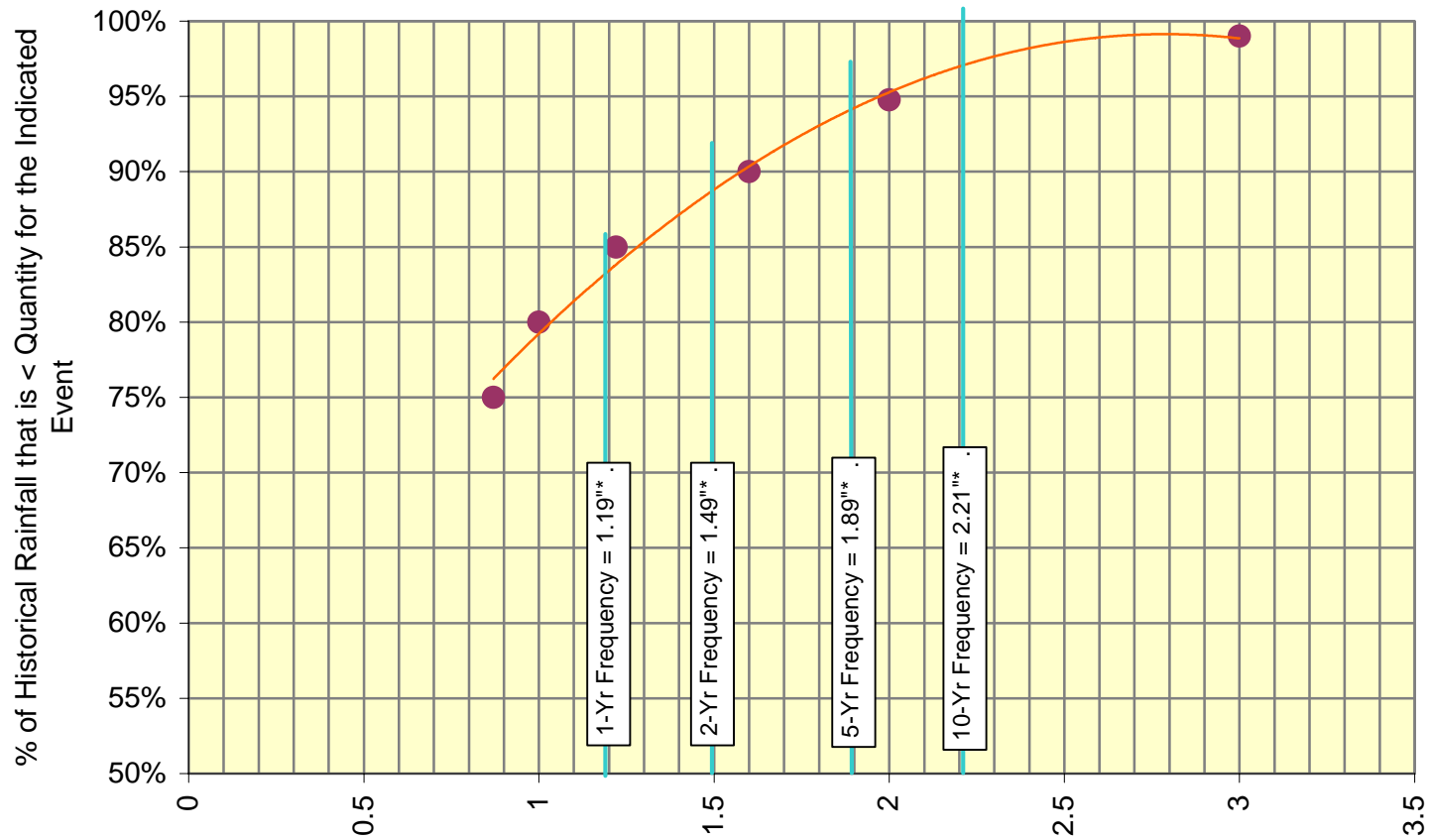


Figure B-1
24-Hour Rainfall (inches)

*Precipitation Frequency/depth from NOAA Atlas 14 Carson City, NV (26-1485)

Clear Creek Property Owners.xls

APN	OWNER	ADD1	ADD2	CITY	ZIP	ZONE
00702111	STATE OF NEVADA FOREST SERVICE	101 N CARSON ST		CARSON CITY, NV	89701-0000	CR
00702112	STATE OF NEVADA FOREST SERVICE	101 N CARSON ST		CARSON CITY, NV	89701-0000	CR
00703107	U S A FOREST SERVICE	1536 S CARSON ST		CARSON CITY, NV	89703-0000	CR
00703108	U S A FOREST SERVICE	1536 S CARSON ST		CARSON CITY, NV	89703-0000	CR
00703109	U S A FOREST SERVICE	1536 S CARSON ST		CARSON CITY, NV	89703-0000	CR
00703110	U S A FOREST SERVICE	1536 S CARSON ST		CARSON CITY, NV	89703-0000	CR
00703112	U S A FOREST SERVICE	1536 S CARSON ST		CARSON CITY, NV	89703-0000	CR
00703113	U S A FOREST SERVICE	1536 S CARSON ST		CARSON CITY, NV	89703-0000	CR
00703117	U S A FOREST SERVICE	1536 S CARSON ST		CARSON CITY, NV	89703-0000	CR
00703118	U S A FOREST SERVICE	1536 S CARSON ST		CARSON CITY, NV	89703-0000	CR
00703119	HIGH CANYON TAHOE LLC	% CAROLINA GIANNOTTI	316 CALIFORNIA AVE STE 445	RENO, NV	89509-0000	CR
00703120	HIGH CANYON TAHOE LLC	% CAROLINA F GIANNOTTI, TTEE	316 CALIFORNIA AVE STE 445	RENO, NV	89509-0000	CR
00703121	U S A FOREST SERVICE	1536 S CARSON ST		CARSON CITY, NV	89703-0000	CR
00703123	STATE OF NEVADA DIV OF ST LANDS	505 E KING ST #300	CAPITOL COMPLEX	CARSON CITY, NV	89710-0000	CR
00703124	STATE OF NEVADA DIV OF ST LANDS	505 E KING ST #300	CAPITOL COMPLEX	CARSON CITY, NV	89710-0000	CR
00703125	HERTZ FAMILY LIVING TRUST	% DONALD RICHARD HERTZ, TTEE	P O BOX 21831	CARSON CITY, NV	89721-0000	CR
00703126	U S A FOREST SERVICE	1536 S CARSON ST		CARSON CITY, NV	89703-0000	CR
00703127	U S A FOREST SERVICE	1536 S CARSON ST		CARSON CITY, NV	89703-0000	CR
00703128	U S A FOREST SERVICE	1536 S CARSON ST		CARSON CITY, NV	89703-0000	CR
00703129	STEIDLEY, DUANE	2205 J-S BAR RANCH ROAD		WASHOE VALLEY, NV	89704-0000	CR
00703130	U S A FOREST SERVICE	1536 S CARSON ST		CARSON CITY, NV	89703-0000	CR
00703131	WEST PEAK-HCT LLC	316 CALIFORNIA AVE STE 445		RENO, NV	89509-0000	CR
00703132	HIGH CANYON TAHOE LLC	% CAROLINA GIANNOTTI	316 CALIFORNIA AVE STE 445	RENO, NV	89509-0000	CR
00703133	CARSON CITY	3303 BUTTI WY #9		CARSON CITY, NV	89701-0000	CR
00704201	KRAMER, ALVIN P & CANDICE V	4640 OLD CLEAR CREEK RD		CARSON CITY, NV	89703-0000	SF5A
00704202	EASBY, J & D FAM TRUST 2/20/04	% JOHN & DIANA EASBY, CO-TTEES	4644 OLD CLEAR CREEK RD	CARSON CITY, NV	89703-0000	SF5A
00704203	KEHRES, MARGARET P TRUST 5/6/05	% MARGARET P KEHRES, TRUSTEE	4650 OLD CLEAR CREEK RD	CARSON CITY, NV	89705-0000	SF5A
00704204	TARR, JAMES D & SANDRA J	4664 OLD CLEAR CREEK RD		CARSON CITY, NV	89701-0000	SF5A
00704205	BUIJTEN, ERNST H & EVANGELINE	1010 E BOBIER DR #81		VISTA, CA	92084-0000	SF5A
00704206	ARNOLD FAMILY TRUST 2/2/00	% MICHAEL & SHARON ARNOLD, TT	4648 OLD CLEAR CREEK RD	CARSON CITY, NV	89705-0000	SF5A
00704207	CRAPO, STANFORD T	4670 OLD CLEAR CREEK RD		CARSON CITY, NV	89705-6846	SF5A
00704208	SCHNEEWEIS, MICHAEL J & EVELYN	P O BOX 11627		ZEPHYR COVE, NV	89448-0000	SF5A
00704209	STELZER, REX	4676 OLD CLEAR CREEK RD		CARSON CITY, NV	89703-0000	SF5A
00704210	MARSHALL, JOHN & JANETTE BLOOM	P O BOX 2398		CARSON CITY, NV	89702-2398	SF5A
00704211	JORDAN, RODERICK F	301 W KING ST		CARSON CITY, NV	89703-0000	SF5A
00704212	WALKER FAMILY 1998 TRUST 6/30/9	%JERRY B & JULIE A WALKER,TTEE	4990 OLD CLEAR CREEK RD	CARSON CITY, NV	89703-0000	SF5A
00704213	MARINO, TERRANCE & LEAH	P O BOX 1973		ZEPHYR COVE, NV	89448-0000	SF5A
00704214	MARSON, DAVID B & JAN T	5020 OLD CLEAR CREEK RD		CARSON CITY, NV	89701-0000	SF5A
00704215	WALKER FAMILY 1998 TRUST	% JERRY & JULIE WALKER, TTEES	4990 OLD CLEAR CREEK RD	CARSON CITY, NV	89705-6847	SF5A
00704216	FORMAN, CHRISTOPHER W & SUSAN M	5030 OLD CLEAR CREEK RD		CARSON CITY, NV	89705-0000	SF5A
00704218	COOKE, ROBERT J & SANDRA D	P O BOX 2881		MINDEN, NV	89423-0000	SF5A
00704222	RISTINE, GLENN E & JARILL S	4270 OLD CLEAR CREEK RD		CARSON CITY, NV	89703-0000	SF5A
00704223	HONG, WINSON & CHERYL A	4340 OLD CLEAR CREEK RD		CARSON CITY, NV	89705-0000	SF5A
00704224	FREDLUND, ROBERT & SHARON	4410 OLD CLEAR CREEK RD		CARSON CITY, NV	89703-0000	SF5A
00704225	GROTH, CAROLYN & JAMES	4480 OLD CLEAR CREEK RD		CARSON CITY, NV	89701-0000	SF5A
00704226	WHEELER, DANIEL J & ELIZABETH M	P O BOX 6265		INCLINE VILLAGE, NV	89450-0000	SF5A
00704229	VALENTI, GEORGETTE C	711 W WASHINGTON ST		CARSON CITY, NV	89703-3827	SF5A
00704230	VALENTI-COTE FAM TRUST 12/31/03	% STEVE & GEORGETTE VALENTI,TT	711 W WASHINGTON ST	CARSON CITY, NV	89703-0000	SF5A

Clear Creek Property Owners.xls

00705102	U S A FOREST SERVICE	1536 S CARSON ST		CARSON CITY, NV	89703-0000	CR
00705103	UNITED STATES OF AMERICA	B L M ATTN: KEN STOWERS	850 HARVARD WAY	RENO, NV	89502-0000	CR
00705105	U S A FOREST SERVICE	1536 S CARSON ST		CARSON CITY, NV	89703-0000	CR
00705107	HUTCHISON FAMILY TRUST	% HALL & DEBORAH HUTCHISON, TT	1187 COAST VILLAGE RD 1-489	SANTA BARBARA, CA	93108-0000	CR
00705108	UNITED STATES OF AMERICA	B L M ATTN: KEN STOWERS	850 HARVARD WAY	RENO, NV	89502-0000	CR
00705109	SCHULZ INVESTMENTS	% WILLIAM E SCHULZ	1627 RANKIN DR	CARSON CITY, NV	89701-0000	CR
00705112	BENNETT, ALICE S & ET AL	% RAY SCHULZ	1501 N DIVISION ST	CARSON CITY, NV	89703-0000	CR
00705116	STATE OF NEVADA	101 N CARSON ST		CARSON CITY, NV	89701-0000	CR
00705119	SCHULZ INVESTMENTS	% WILLAIM E SCHULZ	1627 RANKIN DR	CARSON CITY, NV	89701-0000	SF5A
00705122	STATE OF NEVADA DIV OF ST LANDS	505 E KING ST #300	CAPITOL COMPLEX	CARSON CITY, NV	89710-0000	CR
00705123	BUGAJSKI, ANDRZEJ & TERESA	5757 ETHEL WAY		CARSON CITY, NV	89701-0000	SF5A
00705125	SCHULZ INVESTMENTS	% WILLAIM E SCHULZ	1627 RANKIN DR	CARSON CITY, NV	89701-0000	CR
00705134	WEDDELL, STEVEN P ET AL	4771 CONTE DR		CARSON CITY, NV	89701-0000	SF5A
00705159	WALLACH IX, LLC	BOX 7565		INCLINE VILLAGE, NV	89452-0000	SF5A
00705161	BUGAJSKI, ANDRZEJ & TERESA	5757 ETHEL WAY		CARSON CITY, NV	89701-0000	SF5A
00705162	BUGAJSKI, ANDRZEJ & TERESA	5757 ETHEL WAY		CARSON CITY, NV	89701-0000	SF5A
00705163	BUGAJSKI, ANDRZEJ & TERESA	5757 ETHEL WAY		CARSON CITY, NV	89701-0000	SF5A
00705164	HAWKINS, JEFFREY R & KATHLEEN L	5341 SIERRA HIGHLANDS DR		CARSON CITY, NV	89703-0000	SF5A
00705165	FORD, J SCOTT & NANCY	P O BOX 1730		ZEPHYR COVE, NV	89448-1730	SF5A
00705166	FORD, J SCOTT & NANCY	P O BOX 1730		ZEPHYR COVE, NV	89448-0000	SF5A
00705167	U S A FOREST SERVICE	1536 S CARSON ST		CARSON CITY, NV	89703-0000	CR
00705168	STATE OF NEVADA FOREST SERVICE	101 N CARSON ST		CARSON CITY, NV	89701-0000	CR
00705169	PRUETT, ROBERT L	P O BOX 2204		STATELINE, NV	89449-0000	SF5A
00705170	SCHULZ INVESTMENTS	% WILLIAM E SCHULZ	1627 RANKIN DR	CARSON CITY, NV	89701-0000	SF5A
00705171	SCHULZ INVESTMENTS	% WILLIAM E SCHULZ	1627 RANKIN DR	CARSON CITY, NV	89701-0000	SF5A
00705172	SCHULZ INVESTMENTS	% WILLIAM E SCHULZ	1627 RANKIN DR	CARSON CITY, NV	89701-0000	SF5A
00705173	PRUETT, ROBERT L	P O BOX 2204		STATELINE, NV	89449-0000	SF5A
00705174	STATE OF NEVADA FOREST SERVICE	101 N CARSON ST		CARSON CITY, NV	89701-0000	CR
00705175	U S A FOREST SERVICE	1536 S CARSON ST		CARSON CITY, NV	89703-0000	CR
00705176	CARSON CITY	3303 BUTTI WY #9		CARSON CITY, NV	89701-0000	CR
00705178	FAGEN, WILLIAM MICHAEL 2005 TR	% WILLIAM MICHAEL FAGEN, TTEE	15925 CASWELL LN	RENO, NV	89511-9077	CR
00705179	BENNETT, ALICE S & ET AL	% RAY SCHULZ	1501 N DIVISION ST	CARSON CITY, NV	89703-0000	CR
00705180	CARSON CITY	3303 BUTTI WY #9		CARSON CITY, NV	89701-0000	CR
00705181	FAGEN, WILLIAM MICHAEL 2005 TR	% WILLIAM MICHAEL FAGEN, TTEE	15925 CASWELL LN	RENO, NV	89511-9077	CR
00706138	SWAFFORD, DOYLE E SR & M ET AL	286 COYOTE DR		CARSON CITY, NV	89704-0000	CR
00915107	MARZOLINE, GEORGE & JO ANN	659 VOLTAIRE CANYON RD		CARSON CITY, NV	89701-0000	SF1A
00915110	VAN SICKLE, WAYNE & JOAN D	4280 VOLTAIRE CANYON RD		CARSON CITY, NV	89703-0000	SF1A
00915111	VAN SICKLE, WAYNE	4280 VOLTAIRE ST		CARSON CITY, NV	89703-0000	SF1A
00915309	SUMMERS FAMILY LLC	% JAMES & JUANITA SUMMERS	P O BOX 2007	STATELINE, NV	89449-0000	GC
00915310	SUMMERS FAMILY LLC	% JAMES & JUANITA SUMMERS	P O BOX 2007	STATELINE, NV	89449-0000	GC
00915401	CARSON GAMING LLC	11411 SOUTHERN HIGHLANDS PKWY	STE 300	LAS VEGAS, NV	89141-0000	GC
00915401	CARSON GAMING LLC	11411 SOUTHERN HIGHLANDS PKWY	STE 300	LAS VEGAS, NV	89141-0000	MFA
00922301	STATE OF NEVADA DEPT OF TRAN	U395CC007.955	1263 S STEWART ST #303	CARSON CITY, NV	89712-0000	GC
00922302	SINNOTT, PETER & LISA	5049 CENTER DR		CARSON CITY, NV	89701-0000	GC
00922303	YTURBIDE, PAULA & THOMAS SR TR	P O BOX 855		ZEPHYR COVE, NV	89448-0000	GC
00922404	HURZEL, JOHN D & LINDA SUE	153 ARTHUR DR		CARSON CITY, NV	89701-0000	SF1A
00922405	SMITH, HUGH J JR & ELLEN M TR	160 CLEAR CREEK AVE		CARSON CITY, NV	89701-0000	SF1A
00922406	FULGHUM FAMILY TRUST 4/13/04	% R L & D A FULGHUM, CO-TTEES	136 CLEAR CREEK AVE	CARSON CITY, NV	89701-0000	SF1A
00922407	FIRST CHURCH/CHRIST SCIENTIST	P O BOX 287		CARSON CITY, NV	89702-0000	SF1A

Clear Creek Property Owners.xls

00922408	ABDELHADY, NIDAL & ABDELHADE, C	P O BOX 908		VIRGINIA CITY, NV	89440-0000	SF1A
00922605	TAYLOR, LESLIE	P O BOX 369		CARSON CITY, NV	89702-0000	SF1A
00922607	FOSTER FAMILY TRUST 8/9/05	% JOE SR & DONNA FOSTER, CO-TT	270 CLEAR CREEK AVE	CARSON CITY, NV	89701-0000	SF1A
00922610	BEEN, THOMAS S & HELEN M	4640 WAGON WHEEL RD		CARSON CITY, NV	89703-9412	SF1A
00923501	INGRAM, ROBERT & CINDY	5327 CENTER DR		CARSON CITY, NV	89706-0000	SF1A
00923504	VINEYARD CHRISTIAN FELLOWSHIP	480 CLEAR CREEK AVENUE		CARSON CITY, NV	89701-0000	SF1A
00923602	GUNTER, JAY T & JEAN I	501 ARTHUR ST		CARSON CITY, NV	89701-0000	SF1A
00923603	GEISER, RICHARD L & KRISTI D	601 ARTHUR DRIVE		CARSON CITY, NV	89701-0000	SF1A
00923604	FLAIM FAMILY TRUST 8/18/94	% MILTON & JEANNE FLAIM, TTEES	5320 CENTER DR	CARSON CITY, NV	89701-0000	SF1A
00923801	CAPISTRANT, SHIRLEY E	5450 SILVER SAGE DR		CARSON CITY, NV	89701-0000	SF1A
00923803	VEGA, MARIA	5464 SILVER SAGE DR		CARSON CITY, NV	89701-0000	SF1A
00923804	RAMOS, JOSE & JOYCE	400 CLEAR CREEK AVE		CARSON CITY, NV	89701-0000	SF1A
00923805	SUTTON, THEODORE W & JENKINS, D	360 CLEAR CREEK AVE		CARSON CITY, NV	89701-0000	SF1A
00923808	CLARK LIVING TRUST 4/21/99	369 ARTHUR ST		CARSON CITY, NV	89701-0000	SF1A
00923809	CASTOR, VM REV TRUST 9/13/02	% VIRGINIA M CASTOR, TRUSTEE	307 ARTHUR ST	CARSON CITY, NV	89701-0000	SF1A
00923810	JENSEN, PAUL	320 CLEAR CREEK AVE		CARSON CITY, NV	89701-0000	SF1A
00923901	VINEYARD CHRISTIAN FELLOWSHIP	P O BOX 2698		CARSON CITY, NV	89702-0000	SF1A
00923902	VINEYARD CHRISTIAN FELLOWSHIP	480 CLEAR CREEK AVE		CARSON CITY, NV	89701-0000	SF1A
00924105	STATE OF NEVADA DIV OF ST LANDS	333 W NYE LN RM 118		CARSON CITY, NV	89706-0857	P
00924107	STATE OF NEVADA	CAPITOL COMPLEX		CARSON CITY, NV	89710-0000	P
00924110	B I A	1677 HOT SPRINGS RD		CARSON CITY, NV	89706-0000	PR
00924113	B I A	1677 HOT SPRINGS RD		CARSON CITY, NV	89706-0000	PR
00924114	STATE OF NEVADA DIV OF ST LANDS	333 W NYE LN RM 118		CARSON CITY, NV	89706-0857	PR
00924115	B I A	1677 HOT SPRINGS RD		CARSON CITY, NV	89706-0000	P
00924117	B I A	1677 HOT SPRINGS RD		CARSON CITY, NV	89706-0000	PR
00924118	AMERICAN BAPTIST HOME MISS. SOC	% 5340 SNYDER AVE		CARSON CITY, NV	89701-0000	PR
00924119	STATE OF NEVADA DIV OF ST LANDS	333 W NYE LN RM 118		CARSON CITY, NV	89706-0857	P
00924201	B I A	1677 HOT SPRINGS RD		CARSON CITY, NV	89706-0000	PR
00925302	D'ASCOLI, VINCENT	1407 N CARSON ST		CARSON CITY, NV	89706-0000	SF1A
00925303	DEVOLL REV LIVING TRUST 7/15/04	% EL ROY & AUMIE DEVOLL, TTEES	925 VOLTAIRE CANYON RD	CARSON CITY, NV	89703-0000	SF1A
00925304	DAUGHERTY, MELWYN L & SANDRA J	4300 VOLTAIRE ST		CARSON CITY, NV	89703-0000	SF1A
00925305	HAMLIN, ROBERT E & JOYCE M ETAL	4322 VOLTAIRE ST		CARSON CITY, NV	89703-0000	SF1A
00925306	STEWART FAMILY 2000 TRUST	%CARL R & ADA K STEWART, TTEES	601 W CLEARVIEW DR	CARSON CITY, NV	89703-0000	SF1A
00925307	STEWART FAMILY 2000 TRUST	%CARL R & ADA K STEWART, TTEES	601 W CLEARVIEW DR	CARSON CITY, NV	89703-0000	SF1A
00925309	ALLSHOUSE, ERIC S & DAWN C	797 CAMPBELLO CT		MORGAN HILL, CA	95037-0000	SF1A
00925310	PEDERSON, GLADYS TRUST ET AL	4783 HIGHWAY 50 E		CARSON CITY, NV	89706-0000	SF1A
00925311	CARROLL, RAYMOND G & CURRY, D J	4476 VOLTAIRE ST		CARSON CITY, NV	89703-0000	SF1A
00925312	KECHELY FAMILY TRUST 7/24/98	%MICHAEL & JEANNINE KECHELY,TT	4488 VOLTAIRE ST	CARSON CITY, NV	89701-0000	SF1A
00925501	PEDERSON, GLADYS TRUST ET AL	4783 HIGHWAY 50 E		CARSON CITY, NV	89706-0000	SF1A
00925502	WIXON, LISA M REV LIVING TRUST	% LISA M WIXON, TRUSTEE	1348 WASHINGTON AVE #105	MIAMI, FL	33139-0000	SF1A
00926103	MOLLY FAMILY TRUST 7/25/05	% KEITH & JANET WILLIAMS,TTEES	1805 N CARSON ST #680	CARSON CITY, NV	89701-0000	RC
00926103	MOLLY FAMILY TRUST 7/25/05	% KEITH & JANET WILLIAMS,TTEES	1805 N CARSON ST #680	CARSON CITY, NV	89701-0000	SF1A
00926105	BONDIETT, ROBERT C	4367 VOLTAIRE ST		CARSON CITY, NV	89703-0000	SF1A
00926106	CONRAGAN, JOSEPH J & EMILY	P O BOX 3959		INCLINE VILLAGE, NV	89450-0000	SF1A
00926207	CLEARVIEW LLC	% KATHLEEN HONE	P O BOX 1956	MINDEN, NV	89423-0000	GC
00926208	SIMEON PROPERTIES LLC	16212 SR 527 SUITE F		MILL CREEK, WA	98012-0000	GC
00926209	CLEARVIEW LLC	P O BOX 2826		MINDEN, NV	89423-0000	GC
00926302	FLORES, ERNESTO & RENTERIA, B	1473 RIFLE RANGE RD		EL CERRITO, CA	94530-0000	SF1A
00926303	FLORES, ERNESTO R & RENTERIA, B	1473 RIFLE RANGE RD		EL CERRITO, CA	94530-0000	SF1A

Clear Creek Property Owners.xls

00926304	FLORES, ERNESTO R & RENTERIA, B	1473 RIFLE RANGE RD		EL CERRITO, CA	94530-0000	SF1A
00926305	FLORES, ERNESTO R & RENTERIA, B	1473 RIFLE RANGE RD		EL CERRITO, CA	94530-0000	RC
00926501	CAVE, R & W 1997 TRUST 5/22/97	% WOODROW W CAVE, SUCC TRUSTEE	508 N CURRY ST	CARSON CITY, NV	89703-0000	SF1A
00926502	CAVE, R & W 1997 TR DTD 5/22/97	% WOODROW & ROBERTA CAVE, TTEES	508 N CURRY ST	CARSON CITY, NV	89703-0000	RC
00926502	CAVE, R & W 1997 TR DTD 5/22/97	% WOODROW & ROBERTA CAVE, TTEES	508 N CURRY ST	CARSON CITY, NV	89703-0000	SF1A
00926503	CAVE, R & W 1997 TR DTD 5/22/97	% WOODROW & ROBERTA CAVE, TTEES	508 N CURRY ST	CARSON CITY, NV	89703-0000	RC
00926602	OASIS RV PARK, LTD	% ROBERT LAMERDIN	4150 COUNTY LINE RD	CARSON CITY, NV	89703-0000	GC
00926702	WILSON, GREG	4659 VOLTAIRE ST		CARSON CITY, NV	89701-0000	SF1A
00926703	DIXON, DARWIN D & NEVA K	410 W APPION WAY		CARSON CITY, NV	89701-0000	SF1A
00926704	MC COOL, ANDY & ANDERSON, SUSAN	P O BOX 20615		CARSON CITY, NV	89721-0000	SF1A
00926705	ELSWICK, HEDY A	300 W APPION WAY		CARSON CITY, NV	89703-6303	RC
00926706	CAVE, R & W 1997 TR DTD 5/22/97	% WOODROW & ROBERTA CAVE, TTEES	508 N CURRY ST	CARSON CITY, NV	89703-0000	RC
00926706	CAVE, R & W 1997 TR DTD 5/22/97	% WOODROW & ROBERTA CAVE, TTEES	508 N CURRY ST	CARSON CITY, NV	89703-0000	SF1A
00926707	CAVE, KRESS K	508 N CURRY ST		CARSON CITY, NV	89703-0000	SF1A
00926801	OASIS RV PARK, LTD	% ROBERT LAMERDIN	4150 COUNTY LINE RD	CARSON CITY, NV	89703-0000	GC
00927101	WIDMAR, BOBBY LEE & LINDA MARIE	4740 VOLTAIRE ST		CARSON CITY, NV	89701-0000	SF1A
00927102	WALSER, MYLENE A	606 W PATRICK STREET		CARSON CITY, NV	89701-0000	SF1A
00927103	PILANT, TONY A	4760 VOLTAIRE STREET		CARSON CITY, NV	89703-0000	SF1A
00927104	C C TRÉAS - TRUSTEE (HALL, DONA	% DONALD HALL	GENERAL DELIVERY	CARSON CITY, NV	89702-0000	SF1A
00927201	HARM, EDMUND J & MARYBELLE J	640 W ROLAND STREET		CARSON CITY, NV	89703-0000	SF1A
00927202	CLARK, CHARLES C & JEAN M	620 W ROLAND ST		CARSON CITY, NV	89703-0000	SF1A
00927203	KING, WALTER WAYNE & GEORGA	P O BOX 2049		BETHEL ISLAND, CA	94511-2049	SF1A
00927204	DOORNINK, JAMES D	570 W ROLAND ST		CARSON CITY, NV	89703-0000	SF1A
00927301	NAVARRO, WILLIE & CYNTHIA	4761 EASTUS DR		SAN JOSE, CA	95129-0000	SF1A
00927302	U S A FOREST SERVICE	1536 S CARSON ST		CARSON CITY, NV	89703-0000	CR
00928101	CAVE, R & W 1997 TR DTD 5/22/97	% WOODROW & ROBERTA CAVE, TTEES	508 N CURRY ST	CARSON CITY, NV	89703-0000	RC
00928101	CAVE, R & W 1997 TR DTD 5/22/97	% WOODROW & ROBERTA CAVE, TTEES	508 N CURRY ST	CARSON CITY, NV	89703-0000	SF1A
00928102	BEUTNER, MARK D	470 W PATRICK ST		CARSON CITY, NV	89703-0000	SF1A
00928107	WATTS, DEAN G INTERVIVOS TRUST	3050 KINGS CANYON ROAD		CARSON CITY, NV	89703-0000	RC
00928107	WATTS, DEAN G INTERVIVOS TRUST	3050 KINGS CANYON ROAD		CARSON CITY, NV	89703-0000	SF1A
00928201	HALL INTERNATIONAL LLC	P O BOX 2450		NEWPORT BEACH, CA	92658-8972	GC
00928306	DIVECCHIO, JOSEPH N & EVA C	10160 CROW CANYON RD		CASTRO VALLEY, CA	94552-0000	RC
00928307	LANDRY, WILLIAM D 0402 TRUST	% WILLIAM D LANDRY, TRUSTEE	P O BOX 81	CRYSTAL BAY, NV	89402-0000	RC
00928401	HARRAH'S CLUB	% TAX DEPARTMENT - PROPERTY	1023 CHERRY RD	MEMPHIS, TN	38117-0000	GC
00928801	JODA LIMITED PARTNERSHIP	P O BOX 19190		RENO, NV	89511-0853	GC
00928802	JODA LIMITED PARTNERSHIP	P O BOX 19190		RENO, NV	89511-0853	GC
00928803	JODA LIMITED PARTNERSHIP	P O BOX 19190		RENO, NV	89511-0853	GC
00928804	JODA LIMITED PARTNERSHIP	P O BOX 19190		RENO, NV	89511-0853	GC
00929101	U S A FOREST SERVICE	1536 S CARSON ST		CARSON CITY, NV	89703-0000	CR
00930101	U S A FOREST SERVICE	1536 S CARSON ST		CARSON CITY, NV	89703-0000	CR
00930103	PROPERTY MANAGEMENT, CARSON CITY	3303 BUTTI WY #9		CARSON CITY, NV	89701-0000	PC
00930105	WHITE, JEANNIE & SANDERS, BRUCE	5200 S CARSON ST		CARSON CITY, NV	89701-0000	GC
00930106	NORRIS, CARL	4477 RENO HWY		FALLON, NV	89406-0000	GC
00930203	U S A FOREST SERVICE	1536 S CARSON ST		CARSON CITY, NV	89703-0000	GC
00930208	KYNETT FAM TR & SERMONE, D M TR	% CARSON TAHOE SELF STORAGE	P O BOX 3014	CARSON CITY, NV	89702-0000	GC
00930209	KSJ MANAGEMENT, INC	800 OLD CLEAR CREEK RD		CARSON CITY, NV	89701-0000	GC
00930210	LEPIRE, EUGENE J SR & JUDY L	P O BOX 2207		CARSON CITY, NV	89702-0000	GC
00930214	COSTCO WHOLESALE CORPORATION	ATTN: PROPERTY TAX #127	999 LAKE DR	ISSAQUAH, WA	98027-0000	GC
00930215	COMSTOCK COUNTRY RV RESORT LLC	P O BOX 2207		CARSON CITY, NV	89702-0000	GC

Clear Creek Property Owners.xls

00930301	ROBERTS, EDGAR SEBASTIAN	P O BOX 1882		CARSON CITY, NV	89702-0000	GC
00930302	PARKS DEPT, CITY OF CARSON CITY	3303 BUTTI WAY #9		CARSON CITY, NV	89701-0000	PR
00930303	PARKS DEPT, CITY OF CARSON CITY	3303 BUTTI WAY #9		CARSON CITY, NV	89701-0000	PR
00930305	PARKS DEPT/CITY OF CARSON CITY	803 OLD CLEAR CREEK RD		CARSON CITY, NV	89705-0000	GC
00930307	PARKS DEPT, CITY OF CARSON CITY	3303 BUTTI WAY #9		CARSON CITY, NV	89701-0000	PR
00930308	K & S PROPERTIES	3130 AIRWAY AVE		COSTA MESA, CA	92626-0000	GC
00930402	GARICOITZ FAMILY TRUST	220 WARREN DR		SAN FRANCISCO, CA	94131-0000	GC
00930403	PERKINS, A H DASHIELL	5801 S CARSON ST		CARSON CITY, NV	89701-0000	GC
00930406	WESTERN STATES STORAGE I	% CABBILL INVESTMENTS INC	5861 S CARSON ST	CARSON CITY, NV	89701-0000	GC
00930505	THREE R'S LLC	950 S ROCK BLVD		SPARKS, NV	89431-0000	GC
00930506	STATE OF NEVADA DEPT OF TRAN	U395CC007.955	1263 S STEWART ST #303	CARSON CITY, NV	89712-0000	GC
00931103	REYNEN & BARDIS (CARSON) LLC	9848 BUSINESS PARK DR STE H		SACRAMENTO, CA	95827-0000	MH1A
00931104	DIETER FAMILY TRUST	% DAVID & ROSALIE DIETER,TTEES	2736 SIDONIA AVE	LAS VEGAS, NV	89102-0000	MH1A
00931106	TOLLE, ELAINE	6750 SADDLEHORN RD		CARSON CITY, NV	89701-0000	MH1A
00931108	SCHULZ RANCH DEVELOPERS LLC	10315 PROFESSIONAL CIR #110		RENO, NV	89521-0000	SF1A
00931109	SCHULZ RANCH DEVELOPERS LLC	10315 PROFESSIONAL CIR #110		RENO, NV	89521-0000	SF1A
00931110	SCHULZ RANCH DEVELOPERS LLC	10315 PROFESSIONAL CIR #110		RENO, NV	89521-0000	SF1A
00931114	SCHULZ RANCH DEVELOPERS LLC	10315 PROFESSIONAL CIR #110		RENO, NV	89521-0000	MH1A
00931115						MH1A
00931118	PUBLIC WORKS DEPT, CARSON CITY	% STREET DEPT	3303 BUTTI WAY #7	CARSON CITY, NV	89701-0000	PC
00931127	MEDINA, GERARDO	1799 RACE TRACK RD		CARSON CITY, NV	89701-0000	MH1A
00931134	DENNIS, JAMES S & KATHLEEN P	6400 BIGELOW DR		CARSON CITY, NV	89701-0000	MH1A
00931140	STATE OF NEVADA	101 N CARSON ST		CARSON CITY, NV	89701-0000	P
00931141	MEDINA, CARLOS R & GISELA F	1733 RACE TRACK RD		CARSON CITY, NV	89701-0000	MH1A
00931142	HAWKINS, BRUCE C & SANDRA E	1777 RACE TRACK RD		CARSON CITY, NV	89701-0000	MH1A
00931143	B I A	1677 HOT SPRINGS RD		CARSON CITY, NV	89706-0000	PR
00931144	STATE OF NEVADA DIV OF ST LANDS	333 W NYE LN RM 118		CARSON CITY, NV	89706-0857	P
00931145	B I A	1677 HOT SPRINGS RD		CARSON CITY, NV	89706-0000	PR
00932204	PARKER FAMILY TRUST 12/18/01	% ROBERT & ANITA PARKER, CO-TT	7650 SCHULZ DR	CARSON CITY, NV	89701-0000	MH1A
00932210	FRAZIER, GEORGE R & HELEN	1501 RABE WAY		CARSON CITY, NV	89701-0000	MH1A
00932211	KEVER, MICHAEL & KATHLEEN	7501 SCHULZ DR		CARSON CITY, NV	89701-0000	MH1A
00932212	FOREMASTER, JAY & DIANA L	205 ANNAPOLIS AVE		CARSON CITY, NV	89703-0000	MH1A
00932213	ERB, ALAN S	2318 TAHITI ST		HAYWARD, CA	94545-0000	MH1A
00932214	THOMPSON, LINDA A	P O BOX 791		CARSON CITY, NV	89702-0000	MH1A
00932216	LEAVITT, DUDLEY & LINDA L	7501 MARTHA CIRCLE		CARSON CITY, NV	89701-0000	MH1A
00932217	FARRIS, WILLIAM A & BETTY L	7601 MARTHA CIRCLE		CARSON CITY, NV	89701-0000	MH1A
00932218	RADER, CARLENE & KENNETH & WARE	7600 SCHULZ DR		CARSON CITY, NV	89701-0000	MH1A
00932301	WOODING, CRAIG E & SHARON L	7480 SCHULZ DR		CARSON CITY, NV	89701-0000	MH1A
00932302	SWIFT, KEN W	1490 RABE WY		CARSON CITY, NV	89701-8049	MH1A
00932303	BATTEN, PERRY T & JENERA	1406 RABE WY		CARSON CITY, NV	89701-0000	MH1A
00932304	CEBALLOS, NATALIO M & CRISTINA	1402 RABE WAY		CARSON CITY, NV	89701-0000	MH1A
00971101	PEACOCK, JAMES C & BRENDA LEE	6926 SADDLEHORN ROAD		CARSON CITY, NV	89701-8060	MH1A
00971102	MALCOLM, SANDRA & KINGSLAND, R	6812 SADDLEHORN RD		CARSON CITY, NV	89701-0000	MH1A
00971103	SCHREIHANS, ROBERT F & NANCY	113 HILLCREST CIR		DAYTON, NV	89403-0000	MH1A
00971104	KNORZER, TIM & RENE	P O BOX 21692		CARSON CITY, NV	89721-1692	MH1A
00971105	DIETER FAMILY TRUST DTD 11/3/99	% DAVID & ROSALIE DIETER,TTEES	2736 SIDONIA AVE	LAS VEGAS, NV	89102-0000	MH1A
00971201	GARCIA, JOSEFINA AGUILAR	6950 BIGELOW DR		CARSON CITY, NV	89701-0000	MH1A
00971202	NIX, DENNIS EDWARD & KATHLEEN A	1710 RACE TRACK ROAD		CARSON CITY, NV	89701-0000	MH1A
00971203	SNYDER, SCOTT & CALISTA	4920 FRANKTOWNE RD		CARSON CITY, NV	89704-0000	MH1A

Clear Creek Property Owners.xls

00971204	MC KEAN, RAYMOND M & JULI K	6919 SADDLEHORN ROAD		CARSON CITY, NV	89701-0000	MH1A
00971205	VALLES, JOSE PABLO	6777 SADDLEHORN RD		CARSON CITY, NV	89701-0000	MH1A
00971206	GOLDMAN, GEORGE	4920 FRANKTOWN RD		CARSON CITY, NV	89704-0000	MH1A
00971207	FREEMAN, EILEEN M & THOMAS H	6888 S BIGELOW DR		CARSON CITY, NV	89701-0000	MH1A
00971301	YOUNG, RAYMOND L & LISA D	1801 HWY 50 EAST STE K		CARSON CITY, NV	89701-0000	MH1A
00971302	LOVELACE, LORETTA MAY	7075 SCHULZ DR		CARSON CITY, NV	89701-0000	MH1A
00971303	HAYHURST, VINCENT J & E MARIE	7121 SCHULZ DR		CARSON CITY, NV	89701-0000	MH1A
00971304	WONTORSKI, RICHARD J & MICKLE,	P O BOX 3756		CARSON CITY, NV	89702-3756	MH1A
00971305	GERFEN, LINDA A & AKERS, DANNY	7211 SCHULZ DRIVE		CARSON CITY, NV	89701-0000	MH1A
00971306	PARMENTER, L D & M C REV TR AG	% L D & M C PARMENTER, TTEES	7269 SCHULZ DR	CARSON CITY, NV	89701-0000	MH1A
00971307	ESSEX, MELANIE L ESTATE	% ANN D ESSEX GUARDIAN	7305 SCHULZ DRIVE	CARSON CITY, NV	89701-0000	MH1A
00971308	TALBOT, JAN D	PO BOX 4826		INCLINE VILLAGE, NV	89450-0000	MH1A
00971309	SILVESTRI, GEORGE R & JENNY	7385 SCHULZ DR		CARSON CITY, NV	89701-0000	MH1A
01012101	B L M	5665 MORGAN MILL RD		CARSON CITY, NV	89706-0000	PR
01017101	B L M	5665 MORGAN MILL RD		CARSON CITY, NV	89706-0000	PR
01019301	CHEEK, PAUL W & ALTA RUTH	P O BOX 458		ELVERTA, CA	95626-0000	SF1A
01019306	HAMPTON FAMILY TRUST	% 4321 CONTE DRIVE		CARSON CITY, NV	89701-0000	SF1A
01019307	NOWLIN, JON O & JANET E	4441 CONTE DRIVE		CARSON CITY, NV	89701-0000	SF1A
01020102	B L M	5665 MORGAN MILL RD		CARSON CITY, NV	89706-0000	PR
01020110	JOHNSON, CARL A & MARY A	P O BOX 4360		CARSON CITY, NV	89702-4360	SF1A
01020111	MC KINNISH, RUFFUS F & MARGIE L	5020 S EDMONDS DR		CARSON CITY, NV	89701-0000	SF1A
01020112	ROHR, LOUIS A TRUST	5050 S EDMONDS DR		CARSON CITY, NV	89701-0000	SF1A
01020205	TOLDA, MICHAL & LISA J	2120 BENNETT AVE		CARSON CITY, NV	89701-0000	SF1A
01020211	STRENG, MARTIN K & MICHELLE R	4974 CONTE DR		CARSON CITY, NV	89701-0000	SF1A
01020213	BELGUM, RICHARD J & EVELYN E	5050 CONTE DR		CARSON CITY, NV	89701-0000	SF1A
01020216	HALEN, STEPHEN & CATHY J	5039 S EDMONDS DR		CARSON CITY, NV	89701-0000	SF1A
01020217	THOMPSON, ALAN C & CLAUDETTE J	2010 BENNETT AVE		CARSON CITY, NV	89701-0000	SF1A
01020220	DODGE, KELLY & BRENDA	4949 S EDMONDS DR		CARSON CITY, NV	89701-0000	SF1A
01020302	STRICKLIN, RONALD & CAROL	4859 CONTE DRIVE		CARSON CITY, NV	89701-0000	SF1A
01020303	ZOLA FAMILY TRUST 7/18/03	% MICHAEL & SARAH ZOLA, CO-TT	4923 CONTE DR	CARSON CITY, NV	89701-0000	SF1A
01020304	PAYNE, CHARLES S JR & TERESA	1124 SYCAMORE AVE		MODESTO, CA	95350-0000	SF1A
01020305	PINNOW, THOMAS	11012 ALLEGHENY ST		SUN VALLEY, CA	91352-0000	SF1A
01020306	CATLETT, RONALD & LINDA	4821 CONTE DR		CARSON CITY, NV	89701-0000	SF1A
01020307	RUIZ, GEORGE G & RHONDA J	5033 CONTE DRIVE		CARSON CITY, NV	89701-0000	SF1A
01021104	PARKS DEPT, CITY OF CARSON CITY	3303 BUTTI WAY #9		CARSON CITY, NV	89701-0000	PR
01021105	PARKS DEPT, CITY OF CARSON CITY	3303 BUTTI WAY #9		CARSON CITY, NV	89701-0000	PR
01021106	PARKS DEPT, CITY OF CARSON CITY	3303 BUTTI WAY #9		CARSON CITY, NV	89701-0000	PR
01021107	CLARK, PATRICK J & BARBARA TR	5294 S EDMONDS DR		CARSON CITY, NV	89701-6785	SF1A
01021108	WITTER, MARTIN L & CHRISTINE	5112 S EDMONDS DR		CARSON CITY, NV	89701-0000	SF1A
01021109	HYATT, PHILIP	5110 S EDMONDS DR		CARSON CITY, NV	89701-0000	SF1A
01021110	FORD, TYLER & MARY FAM TRUST	% JEFFREY & MARY FORD, TTEES	5180 S EDMONDS DR	CARSON CITY, NV	89701-0000	SF1A
01021111	DUVALL LIVING TRUST 6/3/96	% ARTHUR & SALLY DUVALL, TTEES	5300 S EDMONDS DR	CARSON CITY, NV	89701-0000	SF1A
01021112	SWANSON, D P & R R TR 3/19/03	% RUTH SWANSON, TRUSTEE	1515 N CARSON ST	CARSON CITY, NV	89701-0000	SF1A
01021209	GRIMES, OLIVER L & B REV LIV TR	5310 CONTE DRIVE		CARSON CITY, NV	89701-0000	SF1A
01021210	ERB, ALAN S	2318 TAHITI ST		HAYWARD, CA	94545-0000	SF1A
01021211	CHALMERS, ANDREW J II & TEPA	5415 S EDMONDS DR		CARSON CITY, NV	89701-0000	SF1A
01021212	KLINE, ROBERT L & CARLEEN N	5495 S EDMONDS DRIVE		CARSON CITY, NV	89701-0000	SF1A
01021213	THOMAS, DAVID R JR & CAROL LYNN	5140 CONTE DRIVE		CARSON CITY, NV	89701-0000	SF1A
01021214	SERPA, DIANE KARIN	5180 CONTE DR		CARSON CITY, NV	89701-0000	SF1A

Clear Creek Property Owners.xls

01021215	LANGE, DANIEL E & SANDRA L	P O BOX 20994		CARSON CITY, NV	89721-0000 SF1A
01021216	CAUFIELD, PATRICK	5290 CONTE DR		CARSON CITY, NV	89701-0000 SF1A
01021217	GRIMES, OLIVER L & B REV LIV TR	5310 CONTE DRIVE		CARSON CITY, NV	89701-0000 SF1A
01021218	SMALL FAMILY 1994 TRUST	5370 CONTE DR		CARSON CITY, NV	89701-0000 SF1A
01021219	FERREE, DAVID M & EVANGELYNN V	5420 CONTE DR		CARSON CITY, NV	89701-0000 SF1A
01021220	HALL, JONATHAN & RUTH	5480 CONTE DR		CARSON CITY, NV	89701-0000 SF1A
01021221	REDFEARN, HOMER & BONNIE TRUST	5215 S EDMONDS DRIVE		CARSON CITY, NV	89701-0000 SF1A
01021222	WEBER, RALPH B	5291 S EDMONDS DR		CARSON CITY, NV	89701-0000 SF1A
01021223	BENNETTS, HARRY R	3029 56 COURT S.E		OLYMPIA, WA	98501-0000 SF1A
01021224	BENNETTS, HARRY R	3029 56 COURT S.E		OLYMPIA, WA	98501-0000 SF1A
01021302	CLARY, ADELA	2209 BENNETT AVE		CARSON CITY, NV	89701-0000 SF1A
01021303	SKOVGARD, J & A FAMILY TRUST	% J M & A SKOVGARD, TRUSTEES	5195 CONTE DR	CARSON CITY, NV	89701-0000 SF1A
01021304	PESIS, STANLEY	5211 CONTE DR		CARSON CITY, NV	89701-0000 SF1A
01021305	CLAIRMONT, SUE ANN	5285 CONTE DR		CARSON CITY, NV	89701-0000 SF1A
01021306	LEUPP FAMILY TRUST 8/15/01	% FRANK & AGNES LEUPP, TTEES	5321 CONTE DR	CARSON CITY, NV	89701-0000 SF1A
01021307	MINTER, OTTO P & ELIZABETH F	5389 CONTE DR		CARSON CITY, NV	89701-0000 SF1A
01021308	FOURNIER, MAXINE T TRUST	5429 CONTE DRIVE		CARSON CITY, NV	89701-0000 SF1A
01021309	DROES, FREDERICK M TR 5/10/02	% FREDERICK M DROES, TRUSTEE	2200 HUDSON DR	CARSON CITY, NV	89701-0000 SF1A
01022105	CARSON CITY	PARKS DEPT, CARSON CITY	3303 BUTTI WAY #9	CARSON CITY, NV	89701-0000 PR
01022106	PATTON, THOMAS M	5640 S EDMONDS DRIVE		CARSON CITY, NV	89701-0000 SF1A
01022107	REIFER, BRYAN T & VICKI A	5680 S EDMONDS DR		CARSON CITY, NV	89701-0000 SF1A
01022108	DAVIS, BRUCE R	5720 S EDMONDS DR		CARSON CITY, NV	89701-0000 SF1A
01022109	HIRMER, LEONARD J TR & SMITH, M	5770 S EDMONDS DR		CARSON CITY, NV	89701-0000 SF1A
01022110	MEYER, ALBERT P & IRENE F	5500 S EDMONDS DR		CARSON CITY, NV	89701-0000 SF1A
01022111	TESTI, RICHARD L & DIANE E	5540 S EDMONDS DR		CARSON CITY, NV	89701-0000 SF1A
01022113	PARKS DEPT, CITY OF CARSON CITY	3303 BUTTI WAY #9		CARSON CITY, NV	89701-0000 PR
01022114	PARKS DEPT, CITY OF CARSON CITY	3303 BUTTI WAY #9		CARSON CITY, NV	89701-0000 PR
01022115	CAPITAL CHRISTIAN CENTER	1600 SNYDER AVE		CARSON CITY, NV	89701-0000 PR
01022206	BERGER, DANIEL & DENNELL	5525 S EDMONDS DR		CARSON CITY, NV	89701-0000 SF1A
01022207	FLUITT, ANGELA K	5555 S EDMONDS DR		CARSON CITY, NV	89701-0000 SF1A
01022208	FROELICH, EDWARD C & ANGELA M	5641 S EDMONDS DRIVE		CARSON CITY, NV	89701-0000 SF1A
01022209	YOUNG, DAVID J & XIOMARA	5681 S EDMONDS DR		CARSON CITY, NV	89701-0000 SF1A
01022210	KUNKLE FAM 2001 TRUST 8/31/01	% DONNA R KUNKLE, TRUSTEE	5715 S EDMONDS DR	CARSON CITY, NV	89701-0000 SF1A
01022211	DOEDE, RICHARD H & CAROL A	5779 S EDMONDS DR		CARSON CITY, NV	89701-0000 SF1A
01022212	GORDON, THOMAS G & MARY E	5855 S EDMONDS DR		CARSON CITY, NV	89701-0000 SF1A
01022213	CARTER, JAMES & EILEEN M	5887 S EDMONDS DR		CARSON CITY, NV	89701-6720 SF1A
01022214	ERICKSEN, MARY BETH & FAY, C	5510 CONTE DR		CARSON CITY, NV	89701-0000 SF1A
01022215	SHOEMAKER, FL REV TR 2/26/04	% F W & L S SHOEMAKER, CO-TT	5580 CONTE DR	CARSON CITY, NV	89701-0000 SF1A
01022216	HAAS, JAMIE & DANELLE	5624 CONTE DR		CARSON CITY, NV	89701-0000 SF1A
01022217	HOWELL FAMILY TRUST 7/11/83	% KEITHLEY & CAROLYN HOWELL,TT	5688 CONTE DR	CARSON CITY, NV	89701-0000 SF1A
01022218	PARENTS, DONALD R & NANCY D	5720 CONTE DRIVE		CARSON CITY, NV	89701-0000 SF1A
01022219	THURSTON, BERNICE M & ROBERT P	5786 CONTE DR		CARSON CITY, NV	89701-0000 SF1A
01022220	LICO FAMILY TRUST 3/29/04	% MICHAEL & MARIE LICO, CO-TT	5840 CONTE DR	CARSON CITY, NV	89701-0000 SF1A
01022221	HOLLOWAY, LARRY G & JUDY R	5880 CONTE DRIVE		CARSON CITY, NV	89701-0000 SF1A
01022302	CAIN, CHRISTINE M	5515 CONTE DR		CARSON CITY, NV	89701-0000 SF1A
01022303	FOGELBERG FAMILY TRUST 7/11/86	% RUTH L FOGELBERG	5575 CONTE DR	CARSON CITY, NV	89701-0000 SF1A
01022304	BURKE, PATRICE E	5637 CONTE DRIVE		CARSON CITY, NV	89701-0000 SF1A
01022305	WALLACE, GEORGE A & BEVERLY TR	5687 CONTE DRIVE		CARSON CITY, NV	89701-7721 SF1A
01022306	HARDY, LEONA M	5715 CONTE DR		CARSON CITY, NV	89701-0000 SF1A

Clear Creek Property Owners.xls

01022307	RAINS, SCOTT D & TAMARA	5775 CONTE DR		CARSON CITY, NV	89701-0000 SF1A
01022308	PARSONS FAMILY 2004 TRUST	% CLIFFORD & GAIL PARSONS, TT	5855 CONTE DR	CARSON CITY, NV	89701-0000 SF1A
01022309	MUSHRUSH, DOROTHY	P O BOX 103		CARSON CITY, NV	89702-0000 SF1A
01023302	B L M	5665 MORGAN MILL RD		CARSON CITY, NV	89706-0000 SF1A
01023303	B L M	5665 MORGAN MILL RD		CARSON CITY, NV	89706-0000 SF1A
01023304	B L M	5665 MORGAN MILL RD		CARSON CITY, NV	89706-0000 PR
01023305	B L M	5665 MORGAN MILL RD		CARSON CITY, NV	89706-0000 SF1A
01023306	B L M	5665 MORGAN MILL RD		CARSON CITY, NV	89706-0000 SF1A
01023307	B L M	5665 MORGAN MILL RD		CARSON CITY, NV	89706-0000 SF1A
01023308	B L M	5665 MORGAN MILL RD		CARSON CITY, NV	89706-0000 SF1A
01023309	B L M	5665 MORGAN MILL RD		CARSON CITY, NV	89706-0000 SF1A
01023310	B L M	5665 MORGAN MILL RD		CARSON CITY, NV	89706-0000 SF1A
01023313	MASSAD, GERALD P	2376 CLEARVIEW DR		CARSON CITY, NV	89701-0000 SF1A
01023314	LUEVANO, DANIEL P & JANICE C	2380 CLEARVIEW DR		CARSON CITY, NV	89701-0000 SF1A
01024302	B L M	5665 MORGAN MILL RD		CARSON CITY, NV	89706-0000 PR
01024303	MC CONNELL, EILEEN REV TRUST	1440 FALLEN LEAF LANE		LOS ALTOS, CA	94024-0000 SF1A
01024304	JOHNSON, MARK & KATHRYN	2393 CLEARVIEW DR		CARSON CITY, NV	89701-0000 SF1A
01025102	B L M	5665 MORGAN MILL RD		CARSON CITY, NV	89706-0000 SF1A
01025202	B L M	5665 MORGAN MILL RD		CARSON CITY, NV	89706-0000 SF1A
01025302	B L M	5665 MORGAN MILL RD		CARSON CITY, NV	89706-0000 PR
01026101	B L M	5665 MORGAN MILL RD		CARSON CITY, NV	89706-0000 SF1A
01026103	B L M	5665 MORGAN MILL RD		CARSON CITY, NV	89706-0000 SF1A
01026104	PHILLIPS, DAVID H & WANONA	2300 HUDSON DR		CARSON CITY, NV	89701-0000 SF1A
01026105	RUBERT, JAMES ALLEN & JANIS E	6646 WALNUT AVE		CHINO, CA	91710-0000 SF1A
01026106	TAYLOR, FRANK GEORGE & APRIL D	5370 ETHEL WY		CARSON CITY, NV	89701-6722 SF1A
01026107	BRYANT, THOMAS F & JACQUELINE B	5350 ETHEL WY		CARSON CITY, NV	89701-0000 SF1A
01026108	LAMPERT, COREY M & KATHLEEN	5369 ETHEL WY		CARSON CITY, NV	89701-0000 SF1A
01026109	BEVERIDGE, ROBERT W & CAROL ANN	4000 HOBART RD		CARSON CITY, NV	89703-0000 SF1A
01026110	PETERSON, ROBERT C JR & LYNNE	5411 ETHEL WY		CARSON CITY, NV	89701-0000 SF1A
01026111	WOODWARD, ERNEST A & PHYLLIS E	2400 HUDSON DRIVE		CARSON CITY, NV	89701-0000 SF1A
01026112	HOFFMAN, KENNETH & SHIRLEY J	5500 GENTRY LANE		CARSON CITY, NV	89701-0000 SF1A
01026113	YUKISH, WILLIAM J & DONNA L V	5420 GENTRY LANE		CARSON CITY, NV	89701-0000 SF1A
01026114	WISH, WARREN & CLAUDIA	5370 GENTRY LANE		CARSON CITY, NV	89701-0000 SF1A
01026115	UMPHRIES, DAWN	5310 GENTRY LN		CARSON CITY, NV	89701-0000 SF1A
01026116	CRAVEN, SHIRLEY M	5290 GENTRY LANE		CARSON CITY, NV	89701-0000 SF1A
01026117	MAJORS LIVING TRUST 2/3/04	% ART & JOYCE MAJORS, TRUSTEES	5220 GENTRY LN	CARSON CITY, NV	89701-0000 SF1A
01026118	BOWN, CRAWFORD J	5180 GENTRY LN		CARSON CITY, NV	89701-0000 SF1A
01026119	MILLER, ROSS L	5140 GENTRY LN		CARSON CITY, NV	89701-0000 SF1A
01026302	B L M	5665 MORGAN MILL RD		CARSON CITY, NV	89706-0000 PR
01026303	ELLIS, RANGER N & FRANCES A	5121 GENTRY LANE		CARSON CITY, NV	89701-0000 SF1A
01026304	ELKINS FAMILY 1991 TRUST	9 MADISON DR		CARSON CITY, NV	89706-0331 SF1A
01026305	COLEGROVE, PRISCILLA	5211 GENTRY LN		CARSON CITY, NV	89701-0000 SF1A
01026306	WALKER, MIRIAM F TRUST 11/10/99	5285 GENTRY LN		CARSON CITY, NV	89701-0000 SF1A
01026307	REMICK, GREGORY T & LYNN N	5321 GENTRY LN		CARSON CITY, NV	89701-0000 SF1A
01026308	GILLISPIE FAMILY TRUST 12/5/05	% M J & M GILLISPIE, CO-TTEES	5349 GENTRY LN	CARSON CITY, NV	89701-0000 SF1A
01026309	NEILL, JOHN E & JENNY M	5429 GENTRY LANE		CARSON CITY, NV	89701-0000 SF1A
01026310	NAKAYAMA, ALBERT Y & LORNA B	5495 GENTRY LANE		CARSON CITY, NV	89701-0000 SF1A
01027102	POWERS, ROLLAND D	2307 HUDSON DR		CARSON CITY, NV	89701-0000 SF1A
01027103	ZARO, R & J FAM TRUST 4/28/04	% RAYMOND & JACQUELINE ZARO,TT	5580 ETHEL WY	CARSON CITY, NV	89701-0000 SF1A

Clear Creek Property Owners.xls

01027104	SISCO, SCOTT K & DEBRA L	5624 ETHEL WY		CARSON CITY, NV	89701-0000 SF1A
01027107	BUGAJSKI, ANDRZEJ & TERESA	5757 ETHEL WY		CARSON CITY, NV	89701-0000 SF1A
01027108	BUGAJSKI, ANDRZEJ & TERESA	5757 ETHEL WY		CARSON CITY, NV	89701-0000 SF1A
01027109	MC CANN, MALACHY M & NENITA N	123 W SECOND ST		CARSON CITY, NV	89703-4225 SF1A
01027110	PFEIFFER, BRUCE TRUST	% BRUCE RICHARD PFEIFFER, TTEE	5687 ETHEL WY	CARSON CITY, NV	89701-0000 SF1A
01027111	BENSINGER, MARIE C	5637 ETHEL WY		CARSON CITY, NV	89701-0000 SF1A
01027112	LEWALSKI, ZDZISLAW M & ELIZABETH	5575 ETHEL WY		CARSON CITY, NV	89701-0000 SF1A
01027113	HADLOCK FAMILY TRUST 9/23/98	5515 ETHEL WY		CARSON CITY, NV	89701-0000 SF1A
01027114	HYATT, ROCK & SHELLA	2511 HUDSON DR		CARSON CITY, NV	89701-0000 SF1A
01027115	PATTERSON, J B & PATTERSON, D A	5580 GENTRY LN		CARSON CITY, NV	89701-0000 SF1A
01027116	BEST, JAMES A & DEBRA S	5622 GENTRY LANE		CARSON CITY, NV	89701-0000 SF1A
01027117	MARTINOVICH, PAUL & SUSAN	5660 GENTRY LANE		CARSON CITY, NV	89701-0000 SF1A
01027118	PITTS, RANDY E & CINDY L	5720 GENTRY LN		CARSON CITY, NV	89701-0000 SF1A
01027119	THOMAS, DAREN E & VICKI L	5786 GENTRY LANE		CARSON CITY, NV	89701-0000 SF1A
01027120	SHERIDAN FAMILY TRUST 9/9/99	5840 GENTRY LN		CARSON CITY, NV	89701-0000 SF1A
01027121	KETCHUM, RONALD P & BARBARA G	5880 GENTRY LANE		CARSON CITY, NV	89701-0000 SF1A
01027122	BENESH, RICHARD A & JEANNE L	2400 SNYDER AVE		CARSON CITY, NV	89701-0000 SF1A
01027123	MALTERER, MICHAEL D & JEANNINE	2350 SNYDER AVE		CARSON CITY, NV	89701-0000 SF1A
01027124	RAMEY, DOUGLAS A & STELLA L	2300 SNYDER AVE		CARSON CITY, NV	89701-0000 SF1A
01027125	MC MEANS FAMILY TRUST	% 2250 SNYDER AVE		CARSON CITY, NV	89701-0000 SF1A
01027126	MOLTZ, CHARLES M & BEVERLY S	5688 ETHEL WY		CARSON CITY, NV	89701-0000 SF1A
01027302	B L M	5665 MORGAN MILL RD		CARSON CITY, NV	89706-0000 PR
01027303	DYE, JAMES H & MAYBELLE J	5515 GENTRY LANE		CARSON CITY, NV	89701-0000 SF1A
01027304	LASHIER, HAROLD D & PATRICIA A	5575 GENTRY LANE		CARSON CITY, NV	89701-0000 SF1A
01027305	LORD, DEANE E & JOANN M	5637 GENTRY LN		CARSON CITY, NV	89701-0000 SF1A
01027306	WIZEMANN, WERNER O & ANNELIESE	5689 GENTRY LN		CARSON CITY, NV	89701-0000 SF1A
01027307	RADTKE, FRED J	5717 GENTRY LN		CARSON CITY, NV	89701-0000 SF1A
01027308	MERRINER, RICHARD A & CHARLOTTE	5775 GENTRY LN		CARSON CITY, NV	89701-0000 SF1A
01027309	BUKOWY FAMILY TRUST 3/8/97	% 5857 GENTRY LANE		CARSON CITY, NV	89701-0000 SF1A
01027310	NICHOLS, FLOYD E & KATHLEEN TR	5895 GENTRY LN		CARSON CITY, NV	89701-0000 SF1A
01028104	B L M	5665 MORGAN MILL RD		CARSON CITY, NV	89706-0000 PR
01028139	STATE OF NEVADA	101 N CARSON ST		CARSON CITY, NV	89701-0000 A
01028141	BENTLY FAMILY LTD PARTNERSHIP	P O BOX 127		MINDEN, NV	89423-0000 SF5A
01028146	STATE OF NEVADA	101 N CARSON ST		CARSON CITY, NV	89701-0000 A
01028146	STATE OF NEVADA	101 N CARSON ST		CARSON CITY, NV	89701-0000 P
01028147	STATE OF NEVADA	101 N CARSON ST		CARSON CITY, NV	89701-0000 P
01028148	STATE OF NEVADA	101 N CARSON ST		CARSON CITY, NV	89701-0000 A
01033101	PARENT, TERRY ALAN	4111 GENTRY LN		CARSON CITY, NV	89701-0000 SF1A
01033102	PRATT FAMILY TRUST	% WILLIAM & DINAH PRATT, TTEES	4211 GENTRY LN	CARSON CITY, NV	89701-0000 SF1A
01033103	GARNETT, BONNIEJEAN	4221 GENTRY LN		CARSON CITY, NV	89701-0000 SF1A
01033104	TEDESCO, RICHARD N & FRANCES A	4241 GENTRY LANE		CARSON CITY, NV	89701-0000 SF1A
01033105	PENNINGTON, DANA B & MARY E	4311 GENTRY LANE		CARSON CITY, NV	89701-0000 SF1A
01033106	GARDNER, JOHN F & MARY C	4321 GENTRY LANE		CARSON CITY, NV	89701-0000 SF1A
01033107	STOKES, KELI J & RICHARD W	4411 GENTRY LN		CARSON CITY, NV	89701-0000 SF1A
01033108	HAMPTON, FRANK P TRUST	4421 GENTRY LANE		CARSON CITY, NV	89701-0000 SF1A
01033109	GLAB, THOMAS A	4511 GENTRY LANE		CARSON CITY, NV	89701-0000 SF1A
01033110	CLARK, ROBERT C & PEGGY I	4521 GENTRY LANE		CARSON CITY, NV	89701-0000 SF1A
01033111	CUBITT, KENNETH & ROGERS, SUSAN	4611 GENTRY LANE		CARSON CITY, NV	89701-0000 SF1A
01033112	MATHIESEN FAMILY TRUST 5/8/98	4621 GENTRY LANE		CARSON CITY, NV	89701-0000 SF1A

Clear Creek Property Owners.xls

01033113	ROACH, RANDALL J & JOCELYN	4711 GENTRY LN		CARSON CITY, NV	89701-0000	SF1A
01033114	HERMAN, KITT G & TENNA R	4801 GENTRY LANE		CARSON CITY, NV	89701-0000	SF1A
01033115	BUKOWY FAMILY TRUST 3/8/97	% 5857 GENTRY LANE		CARSON CITY, NV	89701-0000	SF1A
01033116	GIOTTA, SCOTT A & STARIA	4841 GENTRY LN		CARSON CITY, NV	89701-0000	SF1A
01033117	BOTTOMS, STEVEN T & DELIA M	4911 GENTRY LN		CARSON CITY, NV	89701-0000	SF1A
01033118	HANSEN, CHRISTINE J FAM TRUST	% CHRISTINE J HANSEN, TRUSTEE	5001 GENTRY LN	CARSON CITY, NV	89701-0000	SF1A
01033119	LARSEN, ALFRED N	P O BOX 3484		CARSON CITY, NV	89702-0000	SF1A
01033201	FORD, ROBERT E & DEBORAH	101 HEIDI CIRCLE		CARSON CITY, NV	89701-0000	SF1A
01033202	BERTRAND, MICHAEL J & PAMELA D	4320 GENTRY LANE		CARSON CITY, NV	89701-9506	SF1A
01033203	GONG, NICHOLAS	4400 GENTRY LANE		CARSON CITY, NV	89701-0000	SF1A
01033204	ABBOTT, LARRY G	4420 GENTRY LN		CARSON CITY, NV	89701-0000	SF1A
01033205	CANCIMILLA, RICHARD F & PHYLLIS	4500 GENTRY LANE		CARSON CITY, NV	89701-0000	SF1A
01033206	BANTA, MARTY J & SARAH J	4520 GENTRY LN		CARSON CITY, NV	89701-0000	SF1A
01033207	ALLISON, RICHARD & RHONDA	4600 GENTRY LN		CARSON CITY, NV	89701-0000	SF1A
01033208	LOOMIS, JACQUELYN L	250 HEIDI CIR		CARSON CITY, NV	89701-0000	SF1A
01033209	LAKE, GRANT A & RENEE M	230 HEIDI CIR		CARSON CITY, NV	89701-0000	SF1A
01033210	BUGLI TRUST 12/13/04	% DAVID C & ELINOR H BUGLI, TT	191 HEIDI CIR	CARSON CITY, NV	89701-0000	SF1A
01033211	STANIO, FRED JOSEPH	181 HEIDI CIRCLE		CARSON CITY, NV	89701-0000	SF1A
01033212	SAUNDERS, LILY H	171 HEIDI CIR		CARSON CITY, NV	89701-0000	SF1A
01033213	SABORI FAM LIV TRUST 1/1/03	% TIMOTHY & MARSHA SABORI, TT	3349 SUENO DR	SAN JOSE, CA	95148-0000	SF1A
01033214	PROVIDENTI, NICKOLAS A & CAROL	141 HEIDI CIRCLE		CARSON CITY, NV	89701-0000	SF1A
01033215	CLAUDINO, CHESTER J & KAREN	131 HEIDI CIRCLE		CARSON CITY, NV	89701-0000	SF1A
01033301	KNIGHT, STEPHEN C	P O BOX 1277		CARSON CITY, NV	89702-1277	SF1A
01033302	MARTIN, DOUGLAS J & CONSTANCE L	5000 GENTRY LANE		CARSON CITY, NV	89701-0000	SF1A
01033303	SIMS, DOUGLAS A & NANCY A	4900 GENTRY LANE		CARSON CITY, NV	89701-0000	SF1A
01033304	CAMPBELL, DAVID & KATHLEEN	4840 GENTRY LN		CARSON CITY, NV	89701-0000	SF1A
01033305	JOHNSON, C K & JANET M	4800 GENTRY LANE		CARSON CITY, NV	89701-0000	SF1A
01033306	PEROCK FAMILY TRUST 10/13/04	% WAYNE & DONNA PEROCK, TTEES	251 HEIDI CIR	CARSON CITY, NV	89701-0000	SF1A
01033307	SCOTT, RICHARD G & NANCY L	241 HEIDI CIRCLE		CARSON CITY, NV	89701-0000	SF1A
01033308	DWELLY, DAVID E & WENDI	231 HEIDI CIR		CARSON CITY, NV	89701-0000	SF1A
01033309	DENTON, JEFF & CATHY	221 HEIDI CIRCLE		CARSON CITY, NV	89701-0000	SF1A
01033310	JENNINGS LIVING TRUST 11/16/05	% REX & JACALYN JENNINGS, TTEES	210 HEIDI CIR	CARSON CITY, NV	89701-0000	SF1A
01033311	OPPERMAN, WAYNE G & CAROL JEAN	200 HEIDI CIRCLE		CARSON CITY, NV	89701-0000	SF1A
01033312	CLARKE, RICHARD M & DONNA L	190 HEIDI CIR		CARSON CITY, NV	89701-0000	SF1A
01033313	KELLER, CARL & LINDA	180 HEIDI CIRCLE		CARSON CITY, NV	89701-0000	SF1A
01033314	MUNNS, LOWELL M & DIANNA H	170 HEIDI CIR		CARSON CITY, NV	89701-0000	SF1A
01033315	HOLCOMB, MICHAEL D & ANNA	160 HEIDI CIRCLE		CARSON CITY, NV	89701-0000	SF1A
01033316	HAWLEY, H BENTLEY FAMILY TRUST	150 HEIDI CIRCLE		CARSON CITY, NV	89701-0000	SF1A
01033317	ALLDIS FAMILY TRUST	140 HEIDI CIRCLE		CARSON CITY, NV	89701-0000	SF1A
01033318	SUREY, ROBERT & SALLY LIV TRUST	% ROBERT & SALLY SUREY, TTEES	130 HEIDI CIR	CARSON CITY, NV	89701-0000	SF1A
01033319	STEPANSKI, JEFFREY J & SELTZER,	120 HEIDI CIR		CARSON CITY, NV	89701-0000	SF1A
01033320	STROM, RUSSELL & JOYCE K	110 HEIDI CIR		CARSON CITY, NV	89703-0000	SF1A
01033321	COYLE, J J JR 1996 TRUST	4240 GENTRY LANE		CARSON CITY, NV	89701-0000	SF1A
01033322	JOHNSON, ROLF A & GLORIA	4200 GENTRY LANE		CARSON CITY, NV	89701-0000	SF1A
01033323	SMITH FAMILY TRUST DTD 4/12/00	% FREDRICK T & CAROL D SMITH	2525 CLEARVIEW DR	CARSON CITY, NV	89701-0000	SF1A
01033324	MC MANIS FAMILY TRUST 3/14/03	% ANDREW & JANICE MC MANIS, TT	2441 CLEARVIEW DR	CARSON CITY, NV	89701-0000	SF1A
01033325	BEST, DAVID R	2401 CLEARVIEW DR		CARSON CITY, NV	89701-0000	SF1A
141900001001	U S FOREST SERVICE	TOIYABE NATIONAL FOREST	1200 FRANKLIN WY	SPARKS, NV	89431	190
141900001002	U S FOREST SERVICE	TOIYABE NATIONAL FOREST	1200 FRANKLIN WY	SPARKS, NV	89431	190

Clear Creek Property Owners.xls

141900001016	CLEAR CREEK RANCH LLC		P O BOX 1724	CARSON CITY, NV	89702	600
141900001017	CUNNYNGHAM, GERALDINE & IVA G		4710 CHEATGRASS LN	SPARKS, NV	89436	170
141900001018	PRUETT, ROBERT L		P O BOX 2204	STATELINE, NV	89449	170
141900001019	PRUETT, ROBERT		PO BOX 2204	STATELINE, NV	89449	100
141900001020	BIA-WASHOE TRIBE OF NV & CA	TRIBAL PLANNING DEPARTMENT	919 HWY 395 SOUTH	GARDNERVILLE, NV	89410	100
141900001021	BIA-WASHOE TRIBE OF NV & CA	TRIBAL PLANNING DEPARTMENT	919 HWY 395 SOUTH	GARDNERVILLE, NV	89410	100
141900001022	CLEAR CREEK RANCH LLC		P O BOX 1724	CARSON CITY, NV	89702	600
141900001023	CLEAR CREEK RANCH LLC		P O BOX 1724	CARSON CITY, NV	89702	600
141900001024	U S FOREST SERVICE	TOIYABE NATIONAL FOREST	1200 FRANKLIN WY	SPARKS, NV	89431	190
141900001025	U S FOREST SERVICE	TOIYABE NATIONAL FOREST	1200 FRANKLIN WY	SPARKS, NV	89431	190
141900001026	U S FOREST SERVICE LEASE AGREEM	C/O DOUGLAS CO SCHOOL	751 MONO AV	MINDEN, NV	89423	400
141900001027	DOUGLAS COUNTY SCHOOL DIST		751 MONO AV	MINDEN, NV	89423	400
141900001028	U S FOREST SERVICE	TOIYABE NATIONAL FOREST	1200 FRANKLIN WY	SPARKS, NV	89431	100
141900001029	U S FOREST SERVICE	TOIYABE NATIONAL FOREST	1200 FRANKLIN WY	SPARKS, NV	89431	710
141901601001	SERPA, JOHN C		PO BOX 1724	CARSON CITY, NV	89702	120
141901601002	DOUGLAS COUNTY	C/O CLERK-TREASURER	P O BOX 218	MINDEN, NV	89423	100
141901601003	DOUGLAS COUNTY	C/O CLERK-TREASURER	P O BOX 218	MINDEN, NV	89423	100
141901601004	SERPA, JOHN C		PO BOX 1724	CARSON CITY, NV	89702	120
141901601005	COCKING, C & P S		3677 CINDY'S TR	CARSON CITY, NV	89705	200
141901601006	DUTRA, FRANK R & EUGENIA V TR		3694 CHEROKEE DR	CARSON CITY, NV	89705	200
141901601007	HEISER, LEONARD O & DORIS V		P O BOX 2525	CARSON CITY, NV	89702	200
141901701001	AVITIA, AVEL & MICHELLE D		3676 CINDY'S TR	CARSON CITY, NV	89705	200
141901701002	DUTTON, ROBERT G & HELEN L TRUS		3670 CINDY'S TR	CARSON CITY, NV	89705	200
141901701003	IRWIN, RUSS & LESLIE		PO BOX 375	GLENBROOK, NV	89413	200
141901701004	IRWIN, RUSSELL A & LESLIE BRUSO		PO BOX 375	GLENBROOK, NV	89413	180
141901701005	STEVENSON, TIMOTHY H & MELISSA		2988 BUHACH RD	MERCED, CA	95340	200
141901701006	HOWE, SAMUEL H & KATHERINE		3654 CINDY'S TR	CARSON CITY, NV	89705	200
141901701007	COSTON, JEREMY & DIANE		3655 CINDY'S TR	CARSON CITY, NV	89705-6818	200
141901701008	HALL, DOUGLAS		3661 CINDY'S TR	CARSON CITY, NV	89705	200
141901701009	MEDLEY, RICHARD A & ALICE		771 BUCKS WY	CARSON CITY, NV	89705	200
141901701010	LUMLEY, PAUL W & ARLENE O		3667 CINDY'S TR	CARSON CITY, NV	89705-6819	200
141901701011	KNOLL, JOAN TRUSTEE		3669 CINDY'S TR	CARSON CITY, NV	89705	310
141901701012	BAUGH, GARY A SR & MICHELE H		3671 CINDY'S TR	CARSON CITY, NV	89705	200
141901701013	KOCHEN, KEVIN J & KATHRYN J BAR		3673 CINDY'S TR	CARSON CITY, NV	89705	200
141901701014	ENDICOTT, SHELBY S		3675 CINDY'S TR	CARSON CITY, NV	89705-6819	200
141901701015	STILL, MARY LINDA		800 BUCKS WY	CARSON CITY, NV	89705	200
141901701016	FREEMAN, DONALD E & LINDA A		780 BUCKS WY	CARSON CITY, NV	89705	200
141901701017	COOK, EDWARD D & DEBORAH L		795 BUCKS WY	CARSON CITY, NV	89705	200
141901701018	GROSS, GREGORY L & DIANE O TTEE		3676 CHEROKEE DR	CARSON CITY, NV	89705	200
141901701019	PARISE, DAVID & MISSIRIAN, RINA		3670 CHEROKEE DR	CARSON CITY, NV	89705	200
141901701020	STOR-ALL LLC		PO BOX 687	GARDNERVILLE, NV	89410	200
141901701021	SWEZEY, DONALD & BEVERLY TTEES		3666 CHEROKEE DR	CARSON CITY, NV	89705	200
141901701022	SWEZEY, ERIN & ROSALEE		3652 CHEROKEE DR	CARSON CITY, NV	89705	200
141901701023	KLOBAS, GENEVIEVE R TTEE		PO BOX 20030	EL SOBRANTE, CA	94820-0030	120
141901701024	KLOBAS, GENEVIEVE R TTEE		PO BOX 20030	EL SOBRANTE, CA	94820-0030	120
141901701025	KLOBAS, GENEVIEVE R TTEE		PO BOX 20030	EL SOBRANTE, CA	94820-0030	120
141901701026	BARTELS, MARSHALL & CHERYL A		PO BOX 244	GENOA, NV	89411	120
141901701027	CATTANACH, HARRY G & K		3675 CHEROKEE ST	CARSON CITY, NV	89705	200
141901701028	CONKLIN, DAVID LEE & DEBORA J		3679 CHEROKEE DR	CARSON CITY, NV	89705	200

Clear Creek Property Owners.xls

141901701029	KLOBAS, GENEVIEVE R TTEE		PO BOX 20030	EL SOBRANTE, CA	94820-0030	120
141901801001	MACDOUGAL, ROBERT H & JOAN P		3648 CINDY'S TR	CARSON CITY, NV	89705	200
141901801002	CARLISLE, JASON ROBERT & YVONNE		3642 CINDY'S TR	CARSON CITY, NV	89705	200
141901801003	MAGILL, GERALD T & ALMA JEAN		3638 CINDY'S TR	CARSON CITY, NV	89705	200
141901801004	AWALI, FERAS S & SARA S		3634 CINDY'S TR	CARSON CITY, NV	89705	200
141901801005	DAVIS, ROBERT T & EMMA E TRUSTE		3616 CINDY'S TR	CARSON CITY, NV	89705	200
141901801006	WRIGHT, JOY J		5501 NORTON ST	TORRANCE, CA	90503	120
141901801007	WILKISON, THOMAS K & KRISTINE V		3611 CINDY'S TR	CARSON CITY, NV	89705-6010	200
141901801008	DIETRICH, DWAIN L & SUSAN B		3615 CINDY'S TR	CARSON CITY, NV	89705	200
141901801009	GRAY, MARK B & SANDRA S		3635 CINDY'S TR	CARSON CITY, NV	89705-6818	200
141901801010	STACHOW, ROBERT P JR & BROOKE M		3639 CINDY'S TR	CARSON CITY, NV	89705	200
141901801011	THORNE, MARGARET A		3643 CINDY'S TR	CARSON CITY, NV	89705	200
141901801012	HAMILTON, GEORGE B & VICTORIA		3649 CINDY'S TR	CARSON CITY, NV	89705	200
141901801013	DURAN, GEORGE J & B		3650 CHEROKEE DR	CARSON CITY, NV	89705-6813	200
141901801014	VOGES, LANA		3525 CROSBY HAROLD RD	LINCOLN, CA	95648	120
141901801015	MATHEWS, MARK H & BONNIE B TTEE		PO BOX 280313	NORTHRIDGE, CA	91328-0313	120
141901801016	MATHEWS, MARK H & BONNIE B TTEE		PO BOX 280313	NORTHRIDGE, CA	91328-0313	120
141901801017	KILPATRICK, JERRY E & CAROLYN K		3606 CHEROKEE DR	CARSON CITY, NV	89705	200
141901801018	DINAUER, CATHERINE F TRUSTEE		3601 CHEROKEE DR	CARSON CITY, NV	89705	200
141901801019	GRIEP, DONALD & DEBRA		3611 CHEROKEE DR	CARSON CITY, NV	89705	310
141901801020	MCCHESNEY, BURTON R & MARY D		3525 CROSBY HEROLD RD	LINCOLN, CA	95648	200
141901801021	BRESHEARS, ELIZABETH M		3621 CHEROKEE DR	CARSON CITY, NV	89705	200
141901801022	PATELLOS, WILLIAM & ANNETTE		3631 CHEROKEE DR	CARSON CITY, NV	89705	200
141901801023	MATTAS, DAVID W		3637 CHEROKEE DR	CARSON CITY, NV	89705	200
141901801024	PAYNE, ROBERT D & DEBBIE		3641 CHEROKEE DR	CARSON CITY, NV	89705	200
141901801025	HERNANDEZ, PHILLIP A & CHRIS A		3649 CHEROKEE DR	CARSON CITY, NV	89705-6812	200
141903000001	BUSCH, DIXIE L		3000 OLD CLEAR CREEK RD	CARSON CITY, NV	89705	200
141903000002	BIA-WASHOE TRIBE OF NV & CA	TRIBAL PLANNING DEPARTMENT	919 HWY 395 SOUTH	GARDNERVILLE, NV	89410	100
141903000003	SCHNEIDER, JOSEPH		#1 SCHNEIDER RANCH RD	CARSON CITY, NV	89705	600
141903000005	BIA-WASHOE TRIBE OF NV & CA	TRIBAL PLANNING DEPARTMENT	919 HWY 395 SOUTH	GARDNERVILLE, NV	89410	100
141903000006	CLEAR CREEK RANCH LLC		P O BOX 1724	CARSON CITY, NV	89702	600
141903000007	CLEAR CREEK RANCH LLC		P O BOX 1724	CARSON CITY, NV	89702	600
141903000008	CLEAR CREEK RANCH LLC		P O BOX 1724	CARSON CITY, NV	89702	600
141904000002	MASLOW, MICHAEL L		8951 NOTTINGHAM PL	LA JOLLA, CA	92037	200
141904000003	ALEXANDER, BARBARA & JAMES*		85 JEFFREY PINE LN	CARSON CITY, NV	89705	180
141904000004	ALEXANDER, BARBARA K & JAMES W		85 JEFFREY PINE LN	CARSON CITY, NV	89705	310
141904000005	CRAWLEY, JENNIFER K ET AL*		136 JEFFREY PINE LN	CARSON CITY, NV	89705	200
141904000006	CARPENTER, H DUANE & ANN C		181 OLD CLEAR CREEK RD	CARSON CITY, NV	89705	200
141904000007	RIGGS, PATRICIA M TRUSTEE		1741 FORREST WY	CARSON CITY, NV	89701	200
141904000010	CLEAR CREEK RANCH LLC		P O BOX 1724	CARSON CITY, NV	89702	600
141904000011	CLEAR CREEK RANCH LLC		P O BOX 1724	CARSON CITY, NV	89702	600
141904000012	CLEAR CREEK RANCH LLC		PO BOX 1724	CARSON CITY, NV	89702	600
141904000013	CLEAR CREEK RANCH LLC		PO BOX 1724	CARSON CITY, NV	89702	600
141904000014	CLEAR CREEK RANCH LLC		PO BOX 1724	CARSON CITY, NV	89702	600
141904000015	CLEAR CREEK RANCH LLC		PO BOX 1724	CARSON CITY, NV	89702	600
141905000004	NEVADA, STATE OF	DIVISION OF STATE LANDS	333 W NYE LN #118	CARSON CITY, NV	89706	100
141905000005	INCLINE PARTNERS LLC		1001 TAHOE BL	INCLINE VILLAGE, NV	89451	170
141905000006	INCLINE PARTNERS LLC		1001 TAHOE BL	INCLINE VILLAGE, NV	89451	180
141905000009	SMITH AND SMITH LLC	C/O COLE SMITH	2241 PARK PLACE SUITE D	MINDEN, NV	89423	120

Clear Creek Property Owners.xls

141905000010	LUNDY, JAMES H & JO LYNNE		PO BOX 407	GLENBROOK, NV	89413-0407	200
141906000002	NEVADA, STATE OF	DIVISION OF STATE LANDS	333 W NYE LN #118	CARSON CITY, NV	89706	190
141906000003	U S FOREST SERVICE	TOIYABE NATIONAL FOREST	1200 FRANKLIN WY	SPARKS, NV	89431	190
141906000004	NEVADA, STATE OF	DIVISION OF STATE LANDS	333 W NYE LN #118	CARSON CITY, NV	89706	190
141909000004	CLEAR CREEK RANCH LLC		P O BOX 1724	CARSON CITY, NV	89702	600
141910000004	CLEAR CREEK RANCH LLC		P O BOX 1724	CARSON CITY, NV	89702	600
141910000005	CLEAR CREEK RANCH LLC		P O BOX 1724	CARSON CITY, NV	89702	600
141910000006	CLEAR CREEK RANCH LLC		P O BOX 1724	CARSON CITY, NV	89702	600
141912510001	THOMPSON, WILLIAM M & KATHERINE		3562 ARCADIA DR	CARSON CITY, NV	89705	200
141912510002	BUYTEN, FRITS F & PEGGY J		3566 ARCADIA DR	CARSON CITY, NV	89705-6905	200
141912510003	ELDER, BRIAN & WARNER, MARGUER*		3572 ARCADIA DR	CARSON CITY, NV	89705	200
141912510004	COOGAN, MARY ALICE TRUSTEE		3578 ARCADIA DR	CARSON CITY, NV	89705	200
141912510005	CARTER, DEAN R & S E		3586 ARCADIA DR	CARSON CITY, NV	89705	200
141912510006	CLEMENT, LEROY F		3596 ARCADIA DR	CARSON CITY, NV	89705	200
141912510007	CLEMENT, LEROY F		3596 ARCADIA DR	CARSON CITY, NV	89705	200
141912510008	CLEMENT, LEROY F		3596 ARCADIA DR	CARSON CITY, NV	89705	180
141912510009	CLEMENT, LEROY F		3596 ARCADIA DR	CARSON CITY, NV	89705	200
141912510010	WILSON, WAYNE R & CARLA J		3595 ARCADIA DR	CARSON CITY, NV	89705	200
141912510011	VASSAR, MARIAN ELOISE SURV TTEE		P O BOX 137	GENOA, NV	89411	200
141912510012	SCARCE, SINDY R		3583 ARCADIA	CARSON CITY, NV	89705	200
141912510013	GRIFFIN, EDITH R		760 JACKS VALLEY RD	CARSON CITY, NV	89705	200
141912510014	JACKSON, GENE R		PO BOX 453	GENOA, NV	89411	120
141912511001	SCHULTE, JOHN C & BRITA TRUSTEE		3570 CHEROKEE DR	CARSON CITY, NV	89705	120
141912511002	SCHULTE, JOHN C & BRITA TTEES		3570 CHEROKEE DR	CARSON CITY, NV	89705	200
141912511003	RODRIGUEZ, RONALD J & RENAE L		PO BOX 1200	MINDEN, NV	89423	200
141912511004	SHAFFER, DOUGLAS W & THERESA A		3584 CHEROKEE DR	CARSON CITY, NV	89705	200
141912511005	DAVIS, THOMAS F & CONCETTA A		3590 CHEROKEE DR	CARSON CITY, NV	89705	200
141912511006	MCMASTERS, JAMES W & ELIZABETH		3596 CHEROKEE DR	CARSON CITY, NV	89705	200
141912511007	OGLE, RICHARD WAYNE		3589 CHEROKEE DR	CARSON CITY, NV	89705	120
141912511008	OGLE, RICHARD WAYNE		3589 CHEROKEE DR	CARSON CITY, NV	89705	200
141912511009	ANDERSON, PETE & SHEILA		3585 CHEROKEE DR	CARSON CITY, NV	89705	200
141912511010	DELAURA, GILBERT L & LAURA R		3583 CHEROKEE DR	CARSON CITY, NV	89705	200
141912511011	COX, RONALD E & DENISE L TTEES		PO BOX 5238	NAPA, CA	94581	200
141912511012	STEVENS, ROBERT J & MICHELLE D		795 JACKS VALLEY RD	CARSON CITY, NV	89705	200
141912511013	STEVENS, ROBERT & MICHELLE D		795 JACKS VALLEY RD	CARSON CITY, NV	89705	120
141912511014	SMITH, DAVID G		3559 CHEROKEE DR	CARSON CITY, NV	89705	200
141912511015	PICHON, GREGORY & KERSTIN		3555 CHEROKEE DR	CARSON CITY, NV	89705	200
141912511016	BRAZZANOVICH, EDWARD RUSSELL		3548 CHEROKEE DR	CARSON CITY, NV	89705	200
141912511017	COX, KEVIN L ETAL		4 GAY CI	CARSON CITY, NV	89703	200
141912511018	SINGH, CHANDROWTIE		4423 VALLE VISTA	PITTSBURG, CA	94565	120
141912511019	COUNCIL, ROBERT L & DINAH L		3549 ARCADIA DR	CARSON CITY, NV	89705	200
141912511020	BENNETT, JUNE L		3547 ARCADIA DR	CARSON CITY, NV	89705	200
141912511021	MCBROOM, DONNA ANNE & RONALD J		8925 S PECOS RD #16A	HENDERSON, NV	89074	200
141912610001	PECK, GERALD R & FRANKI A		3542 ARCADIA DR	CARSON CITY, NV	89705	200
141912610002	PALMER, MITCHELL A & VICKI L		3538 ARCADIA DR	CARSON CITY, NV	89705	200
141912610003	THOMASELLI, ROBERT J & KATHRYN		3532 ARCADIA DR	CARSON CITY, NV	89705	200
141912610004	STEWART, LOWRY A		PO BOX 10213	ZEPHYR COVE, NV	89448	200
141912610005	MILLARD, LENA L		3522 ARCADIA DR	CARSON CITY, NV	89705	200
141912610006	BROCK, WILLIAM S & ELLEN A TTEE		3514 ARCADIA DR	CARSON CITY, NV	89705	200

Clear Creek Property Owners.xls

141912610007	HENDRIX, JUDY		P O BOX 2607	CARSON CITY, NV	89702	310
141912610008	KUEHL, JACK A & VICKIE M		3506 ARCADIA DR	CARSON CITY, NV	89705	200
141912610010	ONEAL, ROBIN T		775 PAWNEE ST	CARSON CITY, NV	89705	200
141912610011	MUNRO, JOANNE BARBARA		3519 ARCADIA DR	CARSON CITY, NV	89705	200
141912610012	KOHLER, LOIS JEAN TRUSTEE		3527 ARCADIA DR	CARSON CITY, NV	89705	200
141912610013	ROTHCHILD, LARY R & KATHLEEN I		3531 ARCADIA DR	CARSON CITY, NV	89705	200
141912610014	BELL, THOMAS G & MARY F		3535 ARCADIA DR	CARSON CITY, NV	89705	200
141912610015	ODEM, JOSEPH PAUL JR & MARCIE		3539 ARCADIA DR	CARSON CITY, NV	89705	200
141912610016	BERNING, FRED H & CAROL J TTEES		3543 ARCADIA DR	CARSON CITY, NV	89705	200
141912610017	PEART, WILLIAM M & DIANE F		3540 CHEROKEE DR	CARSON CITY, NV	89705	200
141912610018	MIHELIC, STEVEN C & JERI L		3536 CHEROKEE DR	CARSON CITY, NV	89705	200
141912610019	SMITH, JACQUE A & LAURIE JONES		3530 CHEROKEE DR	CARSON CITY, NV	89705	200
141912610020	LARSON, G JOANN		3526 CHEROKEE DR	CARSON CITY, NV	89705	200
141912610021	WOOD, SYLVIA JEANETTE & ERNEST		3520 CHEROKEE DR	CARSON CITY, NV	89705	200
141912610022	BACON, RAYMOND E & JULIE F		780 PAWNEE ST	CARSON CITY, NV	89705	200
141912610023	WEISS, ROLAND H TRUSTEE		3512 CHEROKEE DR	CARSON CITY, NV	89705	200
141912610026	LARQUIER, LOUIS & JUDY		795 PAWNEE ST	CARSON CITY, NV	89705	200
141912610027	CROWLEY, ELTON & DALE		790 PAWNEE ST	CARSON CITY, NV	89705	200
141912610028	ROBINSON, CLYDE A & KAREN A		3523 CHEROKEE DR	CARSON CITY, NV	89705	200
141912610029	JOHNSON, GRETCHEN & DEL		3529 CHEROKEE DR	CARSON CITY, NV	89705	200
141912610030	STRANSKY, DALE		P O BOX 2195	CARSON CITY, NV	89702	200
141912610031	BLOMSTROM, HOWARD M & CHERYL C		3539 CHEROKEE DR	CARSON CITY, NV	89705-6908	200
141912610032	EASTON, JOHN A		3547 CHEROKEE DR	CARSON CITY, NV	89705	200
142000001007	BENTLY FAMILY LTD PARTNERSHIP		PO BOX B	MINDEN, NV	89423	600
142005101001	MALAVOZOS, GREGORY A & CAROL J*		3537 SILVERADO DR	CARSON CITY, NV	89705	200
142005101002	MEHRINGER, BOBBIE N & DEBRA KAY		3753 LYLA LN	CARSON CITY, NV	89705	200
142005101003	THOMAS, GEORGE JAMES & GAIL A F		1950 STILL MEADOWS RD	SOLVANG, CA	93463	120
142005101004	GUSS LIMITED PARTNERSHIP I		3757 LYLA LN	CARSON CITY, NV	89705	200
142005101005	LYTLE, KURT G & AUDREE		PO BOX 2202	VERTON, NV	89040	200
142005101007	NEVADA, STATE OF	DIVISION OF STATE LANDS	333 W NYE LN #118	CARSON CITY, NV	89706	500
142005101008	BIA-WASHOE TRIBE OF NV & CA	TRIBAL PLANNING DEPARTMENT	919 HWY 395 SOUTH	GARDNERVILLE, NV	89410	100
142005101009	B L M		5665 MORGAN MILL RD	CARSON CITY, NV	89701	100
142005201001	METCALF, NORMAN L & BETTY J		2032 ASH CANYON RD	CARSON CITY, NV	89705	200
142005201002	MARINO, TERRENCE & LEAH		PO BOX 1973	ZEPHYR COVE, NV	89448	200
142005201003	SULLIVAN, ANNE		P O BOX 805	CARSON CITY, NV	89702	200
142005201005	LAIRD, MARTHA J		P O BOX 214	CARSON CITY, NV	89702-0214	200
142005201006	BIG GEORGE VENTURES LLC	C/O RAYMOND MARK SIDNEY	963 TOPSY LN STE 306-315	CARSON CITY, NV	89705	181
142005401004	B L M		5665 MORGAN MILL RD	CARSON CITY, NV	89701	100
142006101001	BIA-WASHOE TRIBE OF NV & CA	TRIBAL PLANNING DEPARTMENT	919 HWY 395 SOUTH	GARDNERVILLE, NV	89410	100
142006301001	KUCKENMEISTER, MICHAEL D & MARY		3696 SILVERADO DR	CARSON CITY, NV	89705	200
142006301002	HOOD, ROBERT L & JENNIE R		3686 SILVERADO DR	CARSON CITY, NV	89705	310
142006301003	MARCHEGGER, MARCUS & LISA		3678 SILVERADO DR	CARSON CITY, NV	89705	200
142006301004	PETERS, CHARLES & JAYNE		709 TUSCARORA	CARSON CITY, NV	89701	200
142006301005	SHIFLET, MARK A		3668 SILVERADO DR	CARSON CITY, NV	89705	200
142006301006	KOZAR, RANDOLPH D & KRISTINE D		3654 SILVERADO DR	CARSON CITY, NV	89705	200
142006301007	JOHNSON, MICHAEL B & SUSAN K		3652 SILVERADO DR	CARSON CITY, NV	89705	200
142006301009	JONES, MARK B & HILMA W		804 AVALON AV	LAFAYETTE, CA	94549	200
142006301010	JORDAN, PAUL R & BETTY		6884 S W 204TH AV	ALOHA, OR	97007	120
142006301011	CARASELLA, JOHN		3681 SILVERADO DR	CARSON CITY, NV	89705	200

Clear Creek Property Owners.xls

142006301012	BUGG, ERNEST L & JUDITH A TTEES		877 BUCKS WY	CARSON CITY, NV	89705	200
142006301013	KAPLAN, MICHAEL A & CATHY L		883 BUCKS WY	CARSON CITY, NV	89705	200
142006301014	GRENADE, JUDITH A TRUSTEE		3692 SUMMER HILL DR	CARSON CITY, NV	89705	200
142006301015	JORDAN, PAUL R & BETTY		6884 S W 204TH AV	ALOHA, OR	97007	120
142006301016	COOK, JOHN T & SHARON L		833 RUSSELL WY	GARDNERVILLE, NV	89460	200
142006301017	SANICOLA, CHARLES M & NANCY P		3666 SUMMERHILL DR	CARSON CITY, NV	89705	200
142006301018	BOPP, ROBERT & JULIA		3660 SUMMER HILL DR	CARSON CITY, NV	89705	200
142006301019	ROZA, FRANCIS V III		3654 SUMMER HILL DR	CARSON CITY, NV	89705	200
142006301020	FRENCH, LARRY & PAMELA TRUSTEES		3667 SUMMER HILL DR	CARSON CITY, NV	89705	200
142006301021	MARTIN, DELL V & HEATHER D		3675 SUMMER HILL DR	CARSON CITY, NV	89705	200
142006301023	MCCLELLAND, EVERETT		3680 SUMMER HILL DR	CARSON CITY, NV	89705	200
142006301024	KELLER, CHARLES F & ARLENE M		3689 SUMMER HILL DR	CARSON CITY, NV	89705	200
142006301025	WOODMAN, WILLIAM JOE JR		3695 SUMMER HILL DR	CARSON CITY, NV	89705	200
142006301026	HERSCHBACH, THOMAS G & NELIA M		3679 SUMMER HILL DR	CARSON CITY, NV	89705	200
142006301027	CASON, WILLIAM & VICIAN, DIXIE		3677 SUMMER HILL DR	CARSON CITY, NV	89705	310
142006301028	SAL ENTERPRISES LLC		4200 OLD HWY 395	CARSON CITY, NV	89704	120
142006301029	SAL ENTERPRISES LLC		4200 OLD HWY 395	CARSON CITY, NV	89704	120
142006310001	BRIDGES, THEODORE G & EILEEN F		3692 GREEN ACRE DR	CARSON CITY, NV	89705	200
142006310002	VOTIPKA, HAROLD D & DEBRA		3686 GREEN ACRE DR	CARSON CITY, NV	89705	200
142006310003	BARCELLOS, ANTHONY & KAY ELLEN		3680 GREEN ACRE DR	CARSON CITY, NV	89705	200
142006310004	ARNOLD, JOHN O & CONCETTINA W		3674 GREEN ACRE DR	CARSON CITY, NV	89705	200
142006310005	REES, JEFFREY WEBB & SUZANNE W		3670 GREEN ACRES	CARSON CITY, NV	89705	200
142006310006	KEVER, NICHOLAS B & LORRAINE M		3668 GREEN ACRE DR	CARSON CITY, NV	89705	200
142006310007	BUCHNER, GERHARD P & LORENZ, A	C/O WES LORENZ	107 MOUNTAIN VIEW RD	GERMANTOWN, NY	12526	120
142006310008	BICKSLER, THEODORE A TRUSTEE		3656 GREEN ACRE DR	CARSON CITY, NV	89705	200
142006310009	CANALE, RICHARD M & LAURA L*		3659 GREEN ACRE DR	CARSON CITY, NV	89705	200
142006310010	SPRINKLE, WARREN D & EDNA J		3665 GREEN ACRES DR	CARSON CITY, NV	89705	200
142006310011	CAREY, IRENE ELIZABETH TRUSTEE		3669 GREEN ACRE DR	CARSON CITY, NV	89705	200
142006310012	CASTEEL, SHANNON R		3673 GREEN ACRE DR	CARSON CITY, NV	89705	200
142006310013	EDISS, THOMAS C & TONYA		3677 GREEN ACRES DR	CARSON CITY, NV	89705	200
142006310014	HUSSONG, WILHELM J JR & GWEN M		3685 GREEN ACRE DR	CARSON CITY, NV	89705	200
142006310015	WESTERLUND, RALPH & ELISE		3689 GREEN ACRES DR	CARSON CITY, NV	89705	200
142006310016	SNIGHT, KEVIN & JUDITH		3695 GREEN ACRE DR	CARSON CITY, NV	89705	200
142006310017	SIERRA ESTATES IMP DIST		P O BOX 446	CARSON CITY, NV	89702	400
142006310018	REDINGER, NORA LORRAINE		3696 SHAWNEE DR	CARSON CITY, NV	89705	200
142006310019	VANHOY, RONALD TRUSTEE		3690 SHAWNEE DR	CARSON CITY, NV	89705	200
142006310020	ALVAREZ, CARMEN		PO BOX 19994	SO LAKE TAHOE, CA	96151	200
142006310021	ADAMSON, RICHARD C		3676 SHAWNEE DR	CARSON CITY, NV	89705	200
142006310022	JOHNSON, DAWAN R & MARY ALICE		3668 SHAWNEE DR	CARSON CITY, NV	89705	200
142006310023	FISHER-CROWLEY, JUDIE		3658 SHAWNEE DR	CARSON CITY, NV	89705	200
142006310024	FISHER, JUDITH J		3658 SHAWNEE DR	CARSON CITY, NV	89705	200
142006310025	GUINASSO, RICHARD J & PATRICIA		3652 SHAWNEE DR	CARSON CITY, NV	89705	200
142006310026	HUNDRIESER, KENNETH D & BETTY M		3651 SHAWNEE DR	CARSON CITY, NV	89705	200
142006310027	GILLIE, STANLEY R & ROSEMARY		3661 SHAWNEE DR	CARSON CITY, NV	89705	200
142006310028	MORI, THEODORE & ANN E		3667 SHAWNEE DR	CARSON CITY, NV	89705	200
142006310029	VALDEZ, STEVE R & BARBARA J		3671 SHAWNEE DR	CARSON CITY, NV	89705	310
142006310030	DURANTE, ANGELO & ANN		3675 SHAWNEE DR	CARSON CITY, NV	89705	200
142006310031	SILVA, MARY H BERTOLANI		3683 SHAWNEE DR	CARSON CITY, NV	89705	310
142006310032	STEVENS, STUART A & H		3687 SHAWNEE DR	CARSON CITY, NV	89705	200

Clear Creek Property Owners.xls

142006310033	FERRIS, NICHOLAS & SABRINA H		3689 SHAWNEE DR	CARSON CITY, NV	89705	200
142006401001	ONEAL, GARVIN D & HELGA M		3646 SILVERADO DR	CARSON CITY, NV	89705	200
142006401002	PICKRELL, RONALD E & SUSAN G		3632 SILVERADO DR	CARSON CITY, NV	89705	200
142006401003	ALLEN, GRANT R & EILEEN V TRUST		3628 SILVERADO DR	CARSON CITY, NV	89705	120
142006401004	ALLEN, GRANT R & EILEEN V TRUST		3628 SILVERADO DR	CARSON CITY, NV	89705	200
142006401005	ALLEN, GRANT R & EILEEN V TRUST		3628 SILVERADO DR	CARSON CITY, NV	89705	120
142006401006	SCHNEIDER, DAVID W ET AL*		P O BOX 21765	CARSON CITY, NV	89702	200
142006401007	OLSON, MICHAEL & TANYA		3605 SILVERADO DR	CARSON CITY, NV	89705	200
142006401008	SMOCK, SUSAN G & DAVID MARK		3607 SILVERADO DR	CARSON CITY, NV	89705	200
142006401009	BOYER, JEFFREY D & UNDINE G		1331 CAPRI DR	CAMPBELL, CA	95008	200
142006401010	VOGELPOHL, ROBERT J		3631 SILVERADO DR	CARSON CITY, NV	89705	200
142006401011	MIOLANO, JOSEPH E TRUSTEE		3633 SILVERADO DR	CARSON CITY, NV	89705	200
142006401012	CONTRERAS, RICARDO		3647 SILVERADO DR	CARSON CITY, NV	89705	200
142006401013	BOWEN, EUGENE W		3417 BLUEJAY DR	ANTIOCH, CA	94509	200
142006401014	YOUNG, EDWARD T & LORI E TTEES		3650 SUMMER HILL DR	CARSON CITY, NV	89705	200
142006401015	MODARELLI, JOSEPH & DYONNE A		3646 SUMMERHILL DR	CARSON CITY, NV	89705	200
142006401016	MERRILL, DAVID A & CONNY L		3638 SUMMER HILL DR	CARSON CITY, NV	89705	200
142006401017	HAYS, DOUGLAS H & WENDY ET AL*		880 JACKS VALLEY RD	CARSON CITY, NV	89705	330
142006401018	NORBERG, MATTHEW W		3535 MONT BLANC CT	CARSON CITY, NV	89705	200
142006401019	VARNER, CARROL & JOSEPHINE P		3452 BERNESE CT	CARSON CITY, NV	89705	320
142006401020	CONTINENTAL TELEPHONE	C/O TAX DEPT 19845 N U S 31	P O BOX 407	WESTFIELD, IN 46074	46074	700
142006401021	BOLES, ALLEN C & BILLIE R		3607 SUMMER HILL DR	CARSON CITY, NV	89705	200
142006401022	ROYCE, MARGARET R		3551 SHADOW LN	CARSON CITY, NV	89705	120
142006401023	ROWAN-FULLER, KERRI		3629 SUMMER HILL DR	CARSON CITY, NV	89705	200
142006401024	MURPHY, PATRICIA E TRUSTEE		3631 SUMMER HILL DR	CARSON CITY, NV	89705	200
142006401025	MARINO, TERRENCE C & LEAH		P O BOX 1973	ZEPHYR COVE, NV	89448	200
142006401026	CASTOR, JAMES H JR & SANDRA D		3641 SUMMER HILL DR	CARSON CITY, NV	89705	200
142006401027	HINES, ROBLEY S & ROSEMARY A		3649 SUMMER HILL DR	CARSON CITY, NV	89705	200
142006401028	KRAUSE, JACK W & MELANIE		3655 SUMMER HILL DR	CARSON CITY, NV	89705	200
142006410001	MATTAS, WILLIAM & VERONA TRUSTE		3650 GREEN ACRE DR	CARSON CITY, NV	89705	200
142006410002	MATTAS, WILLIAM & VERONA TRUSTE		3650 GREEN ACRE DR	CARSON CITY, NV	89705	120
142006410003	TANNER, THOMAS & JENNIFER		3630 GREEN ACRE DR	CARSON CITY, NV	89705	310
142006410004	THORPE, MARK R		3626 GREEN ACRE DR	CARSON CITY, NV	89705	200
142006410005	ENGLISH, LAWRENCE B & DIANNA L		3618 GREEN ACRES DR	CARSON CITY, NV	89705	200
142006410006	HILL, DONALD A TRUSTEE		3608 GREEN ACRE DR	CARSON CITY, NV	89705	200
142006410007	BAILEY, JOSEPH A		3602 GREEN ACRE DR	CARSON CITY, NV	89705	200
142006410008	LAMP, TERRI		3340 PRINCETON PLZ #K	EL SOBRANTE, CA	94803	200
142006410009	HOLMES, JOHN M & PAULINE G TRUS		4735 QUINCE AV	SILVER SPRINGS, NV	89429	200
142006410010	ARNOLD, RICHARD L & GENEVA M L		3621 GREEN ACRE DR	CARSON CITY, NV	89705	200
142006410011	ORVIS, SCOTT C & JOLENE A		3627 GREEN ACRE DR	CARSON CITY, NV	89705	200
142006410012	TANNER, LOUISE TTEES ET AL*		3635 GREEN ACRES DR	CARSON CITY, NV	89705	200
142006410013	FRY, LEWIS J & PATRICIA A		3637 GREEN ACRE DR	CARSON CITY, NV	89705	200
142006410014	BERTUZZI, DUANE J & MCKAY, K M		3655 GREEN ACRE DR	CARSON CITY, NV	89705	310
142006410015	DAVIS, STEVEN D & NORMA H		3648 SHAWNEE DR	CARSON CITY, NV	89705	200
142006410016	RUSH, HOWARD B & DIANE P		3640 SHAWNEE DR	CARSON CITY, NV	89705	310
142006410017	DOSS, JAMES F & VIRGINIA S		137 GREENDALE DR	LOS GOTOS, CA	95032	200
142006410018	HOBBS, DARRYL E & SHIRLEY H		3624 SHAWNEE	SAN LORENZO, CA	94580	200
142006410019	VALDESPINO, RONALD G & PATRICIA		3616 SHAWNEE DR	CARSON CITY, NV	89705	200
142006410020	RODEFER, ROBERT J & MARILYN H		3610 SHAWNEE DR	CARSON CITY, NV	89705	200

Clear Creek Property Owners.xls

142006410021	TRAVERS, GILBERT & MARIA Z		3604 SHAWNEE DR	CARSON CITY, NV	89705	200
142006410022	COLLIE, MICHAEL R & JUDY W		3603 SHAWNEE DR	CARSON CITY, NV	89705	200
142006410023	BUNCH, JON L & BETH A		3609 SHAWNEE DR	CARSON CITY, NV	89705	200
142006410024	INGRAM, M & VANKONINGSVELD, M*		3615 SHAWNEE DR	CARSON CITY, NV	89705	200
142006410025	NICHOLS, MICHELE & TOLMAN, C O		3621 SHAWNEE DR	CARSON CITY, NV	89705	200
142006410026	BUNCH, VELMA L TRUSTEE		3633 SHAWNEE DR	CARSON CITY, NV	89705	200
142006410027	DELIMA, EDWARD TRUSTEE		3639 SHAWNEE DR	CARSON CITY, NV	89705	200
142006410028	HO, WINSON H & INWOOD, MARY SUE		3645 SHAWNEE DR	CARSON CITY, NV	89705	200
142006501003	CARSON AUTO MALL LLC		1062 FAIRVIEW DR	CARSON CITY, NV	89701	140
142006502001	CARSON CITY		201 N. CARSON ST	CARSON CITY, NV	89701	400
142006502008	WAL-MART REAL ESTATE BUS TRUST		2001 S E 10TH ST	BENTONVILLE, AR	72712-6489	400
142006502009	ROBERTS, EDGAR S		P O BOX 1882	CARSON CITY, NV	89702	400
142006502010	EL DORADO SAVINGS BANK FSB		PO BOX 1208	PLACERVILLE, CA	95667	400
142006502011	BRINKER NEVADA INC		6820 LBJ FREEWAY	DALLAS, TX	75240	400
142006502012	GLUHAICH, PETER O PARTNERSHIP	ATTN: STEPHEN MOSER	668 N PACIFIC COAST HWY 517	LAGUNA BEACH, CA	92651	400
142006502013	NEWMAN, PATRICIA M		3 GLENBROOK CI	CARSON CITY, NV	89703	400
142006601001	MCCOWAN, JIM & CAPURRO, KAY S		PO BOX 21110	CARSON CITY, NV	89721	140
142006601002	MCCOWAN, JIM & CAPURRO, KAY S		PO BOX 21110	CARSON CITY, NV	89721	140
142006602015	CARSON VALLEY CENTER LLC		1001 CHERRY ST STE 308	COLUMBIA, MO	65201	400
142006602018	AIG BAKER CARSON VALLEY LLC		1701 LEE BRANCH LN	BIRMINGHAM, AL	35242	140
142006602019	AIG BAKER CARSON VALLEY LLC		1701 LEE BRANCH LN	BIRMINGHAM, AL	35242	140
142006602020	AIG BAKER CARSON VALLEY LLC		1701 LEE BRANCH LN	BIRMINGHAM, AL	35242	140
142006602023	CARSON VALLEY CENTER LLC		1001 CHERRY ST STE 308	COLUMBIA, MO	65201	400
142006602026	HILLVIEW CARSON CITY LLC		18420 OAK DR	LOS GATOS, CA	95030	400
142006602027	IN-N-OUT BURGERS		13502 HAMBURGER LN	BALDWIN PARK, CA	91706	400
142006602028	CARSON VALLEY CENTER LLC		1001 CHERRY ST STE 308	COLUMBIA, MO	65201	400
142006602030	BANK OF AMERICA NA		400 S ZANG BL 11TH FLOOR	DALLAS, TX	75208	400
142006602031	CARSON VALLEY CENTER LLC		1001 CHERRY ST STE 308	COLUMBIA, MO	65201	400
142006701001	WINTERBERG, FRIEDWARDT		5395 GOLDENROD DR	RENO, NV	89511	140
142006701002	HUNTZINGER, MARTIN & DOROTHY		1116 W 5TH ST	CARSON CITY, NV	89703	140
142006701004	CARSON AUTO MALL LLC		1062 FAIRVIEW DR	CARSON CITY, NV	89701	140
142006702001	U S FOREST SERVICE	TOIYABE NATIONAL FOREST	1200 FRANKLIN WY	SPARKS, NV	89431	100
142006702002	INTERNATIONAL CHURCH OF THE	FOUR SQUARE C/O JOHN BOWERS	1910 W SUNSET BL #200	LOS ANGELES, CA	90026	400
142006702003	CA-NV-HI DIST CHURCH EST FUND	ATTN: REV THEODORE IVERSON	465 WOOLSEY ST	SAN FRANCISCO, CA	94134	400
142006702004	U S FOREST SERVICE	TOIYABE NATIONAL FOREST	1200 FRANKLIN WY	SPARKS, NV	89431	100
142006801001	WHEATON, RICHARD J		3647 N HWY 395	CARSON CITY, NV	89705	200
142006802001	L D S CHURCH #519 7767		50 E NORTH TEMPLE 22ND FL	SALT LAKE CITY, UT	84150	140
142006802002	SERPA, JOHN C		PO BOX 1724	CARSON CITY, NV	89702	140
142006802003	REAM, STEPHANIE		PO BOX 1724	CARSON CITY, NV	89702	140
142006802004	DAYTON HUDSON CORP	% PROPERTY TAX DEPT T-1239	P O BOX 9456 TPN 0950	MINNEAPOLIS, MN	55440-9456	400
142006802005	SERPA, JOHN C		PO BOX 1724	CARSON CITY, NV	89702	140
142006802006	SERPA, JOHN C		PO BOX 1724	CARSON CITY, NV	89702	140
142007101001	HOGUE, CLARENCE M		858 JACKS VALLEY RD	CARSON CITY, NV	89705	200
142007101002	ZIMMERMAN, DOUGLAS E & PAULA G		851 JACKS VALLEY RD	CARSON CITY, NV	89705	200
142007101003	FRANKLIN, THOMAS F TRUSTEE		PO BOX 4788	STATELINE, NV	89449	200
142007101004	SERPA, JOHN C		PO BOX 1724	CARSON CITY, NV	89702	170
142007110001	OFARRELL, MARK K & CHRISTINE B		3598 GREEN ACRE DR	CARSON CITY, NV	89705	200
142007110002	KISPERT, GREGG & LESLIE E		3592 GREEN ACRE DR	CARSON CITY, NV	89705	200
142007110003	EBRIGHT, MICHAEL & DORI		3593 GREEN ACRE DR	CARSON CITY, NV	89705	200

Clear Creek Property Owners.xls

142007110004	WILCOXSON, NELLE D ET AL*	3597 GREEN ACRE DR	CARSON CITY, NV	89705	200
142007110005	REINHARDT, JAMES A & KAREN L	3590 SHAWNEE DR	CARSON CITY, NV	89705	200
142007110006	WALLACE, JOHN B JR	3586 SHAWNEE DR	CARSON CITY, NV	89705	200
142007110007	JOHNSON, LAURENCE & J L	544 CAMEO WY	ARROYO GRANDE, CA	93420	120
142007110008	DEARMIN, MICHAEL G & HASSAN, K*	3550 SHAWNEE DR	CARSON CITY, NV	89705	200
142007110009	NETZEL, JUNE A & LORETTA LE	3548 SHAWNEE DR	CARSON CITY, NV	89705	200
142007110010	FARHOOD, VINCENT W & SUSAN V	18234 MALLARD ST	WOODLAND, CA	95695	120
142007110013	OBRYNE, LAURIE	3593 SHAWNEE DR	CARSON CITY, NV	89705	200
142007110014	MORRIS, JACK H & MARILYN TRUSTE	3559 SHAWNEE DR	CARSON CITY, NV	89705	200
142007110016	DELEEUV, PATRICK & MARIA	880 VALLEY CREST DR	CARSON CITY, NV	89705	120
142007110017	SMITH, JAMES A & BARBARA A	841 JACKS VALLEY RD	CARSON CITY, NV	89705	200
142007110018	GARDNER, RONALD G & ADAM R	430 BAVARIAN DR	CARSON CITY, NV	89705	200
142007111001	BENTLEY, LARETTA J	3580 GREEN ACRE DR	CARSON CITY, NV	89705	200
142007111002	MATUS, ERIC J & TAMARA A	3570 GREEN ACRE DR	CARSON CITY, NV	89702	200
142007111003	KIRSON, MORTON & INEZ	3560 GREEN ACRE DR	CARSON CITY, NV	89705	200
142007111004	YOUNG, FRED & DOROTHY	3545 GREEN ACRE DR	CARSON CITY, NV	89705	200
142007111005	RONNING, RICHARD R & CONNIE J	P O BOX 9409	MAMMOTH LAKES, CA	93546	200
142007111006	LAWTON, BRADLEY G & ROSEMARY N	PO BOX 762	SO LAKE TAHOE, CA	96156	200
142007111007	HOFFMAN, DENNIS C & DOREEN V	3575 GREEN ACRE DR	CARSON CITY, NV	89705	200
142007112001	NAGEL, WILLIAM C & CHRISTINE	870 RIDGE CREST DR	CARSON CITY, NV	89705	200
142007112002	MALAVAZOS, GREGORY A & CAROL J	3537 SILVERADO DR	CARSON CITY, NV	89705	200
142007112003	MILLER, SHANE & WENDY TRUSTEES	874 RIDGE CREST DR	CARSON CITY, NV	89705	200
142007112004	FOSTER, CRAIG J & ALEXANDREA H	3187 VICKERY DR	MARIETTA, GA	30066	200
142007112005	DOUGHTY, EDWIN & SANDRA	878 RIDGE CREST DR	CARSON CITY, NV	89705	200
142007112006	DELEEUV, PATRICK W & MARIA C	880 VALLEY CREST DR	CARSON CITY, NV	89705	200
142007112007	GOOD, RICHARD D & MARGARET K	882 VALLEY CREST DR	CARSON CITY, NV	89705	200
142007112008	MAXIMOV, STEVEN & DAWN	884 VALLEY CREST DR	CARSON CITY, NV	89705	200
142007112009	CHAE, WHIJONG & OKKYUNG	886 VALLEY CREST DR	CARSON CITY, NV	89705	200
142007112010	CONOVER, HENRY S & CYNTHIA A	888 VALLEY CREST DR	CARSON CITY, NV	89705	200
142007112011	GARRISON, MARK R & LUPE B	890 VALLEY CREST DR	CARSON CITY, NV	89705	200
142007112012	GRAY, THOMAS B & ADNA B TRUSTEE	892 VALLEY CREST DR	CARSON CITY, NV	89705	200
142007112013	WATTERS, MARK A & SALLY CHAPMAN	894 VALLEY CREST DR	CARSON CITY, NV	89705	200
142007112014	MORRISON, MOLLY C	896 VALLEY CREST DR	CARSON CITY, NV	89705	200
142007112015	HENSON, BURMA	897 VALLEY CREST DR	CARSON CITY, NV	89705	200
142007112016	TWISS, HELEN M SUR TRUSTEE	895 VALLEY CREST DR	CARSON CITY, NV	89705	200
142007112017	HUNTER, LORRAINE & ESSAFF,CINDY	893 VALLEY CREST DR	CARSON CITY, NV	89705	200
142007112018	SWEATT, FRANCES J	891 VALLEY CREST DR	CARSON CITY, NV	89705	200
142007112019	DUNCAN, L G & GLORIA J TRUSTEES	889 VALLEY CREST DR	CARSON CITY, NV	89705	200
142007112020	MARCHESANO, GARY L	887 VALLEY CREST DR	CARSON CITY, NV	89705	200
142007112021	JACINTO, BERNARDO M & ANNA R	885 VALLEY CREST DR	CARSON CITY, NV	89705	200
142007112022	CRISS, DERRICK M & LINDA F	883 VALLEY CREST DR	CARSON CITY, NV	89705	200
142007112023	LANINGHAM, CALVIN W & STEPHANIE	881 VALLEY CREST DR	CARSON CITY, NV	89705	200
142007112024	ESPIRITU, RESTY V & CYNTHIA P	879 VALLEY CREST DR	CARSON CITY, NV	89705	200
142007112025	MENDIBLES, LEON M & TRACY A	877 VALLEY CREST DR	CARSON CITY, NV	89705	200
142007112026	ANDERSON, DONALD G & SHELLA E	875 VALLEY CREST DR	CARSON CITY, NV	89705	200
142007112027	JONES, KENNETH L & JEAN L	873 VALLEY CREST DR	CARSON CITY, NV	89705	200
142007112028	DAVID, RAMSES A & BARBARA H	871 VALLEY CREST DR	CARSON CITY, NV	89705	200
142007112029	ACHILARRE, PETER P & ROSEMARIE	1771 SW 32 ST	FORT LAUDERDALE, FL	33315	200
142007112030	NUNEZ, JUAN & FAUSTO, ALMA	3582 SILVERADO DR	CARSON CITY, NV	89705	200

Clear Creek Property Owners.xls

142007112031	LYNN, THOMAS M JR & PATRICIA E	1523 S BARBARA ST	SANTA MARIA, CA	93454-7109	200
142007112032	SHEETS, DERREK EVAN & FLORIDA T	3585 SILVERADO DR	CARSON CITY, NV	89705	200
142007112033	LAW, CHRISTOPHER KENNETH	873 RIDGE CREST DR	CARSON CITY, NV	89705	200
142007112034	MALAVAZOS, GREGORY A & CAROL J	3537 SILVERADO DR	CARSON CITY, NV	89705	200
142007112035	HARNAR, CRAIG C	877 RIDGE CREST DR	CARSON CITY, NV	89705	200
142007112036	MORALES, MAY V & JOHN L ET AL*	878 VALLEY CREST DR	CARSON CITY, NV	89705	200
142007112037	SUMIDA, SHIGEO & ANNE TRUSTEES	876 VALLEY CREST DR	CARSON CITY, NV	89705	200
142007112038	BONDIETTI, MARY TRUSTEE	874 VALLEY CREST DR	CARSON CITY, NV	89705	200
142007112039	GOLDMAN, MARJORY & WILLIAM TTEE	1347 VIEW POINTE	GARDNERVILLE, NV	89410	200
142007112040	CORPUZ, MAYNETTE D	2823 BENTON ST	SANTA CLARA, CA	95051	200
142007113001	BLACK, KENNETH D & JUDITH L	862 MEADOW VISTA DR	CARSON CITY, NV	89705	200
142007113002	NEWLAND, ALLAN K & ELIZABETH S	870 MEADOW VISTA DR	CARSON CITY, NV	89705	200
142007113003	MARTINEZ, JOHN Y	872 MEADOW VISTA DR	CARSON CITY, NV	89705	200
142007113004	MORRIS, ROGER S & JEANETTE C	874 MEADOW VISTA DR	CARSON CITY, NV	89705	200
142007113005	DAVIES, ROBERT H & VIVIAN B	PO BOX 22798	BAKERSFIELD, CA	93390	200
142007113006	WASHINGTON, JOHN K	878 MEADOW VISTA DR	CARSON CITY, NV	89705	200
142007113007	FERREE, WAYNE & DIANE PHILLIPS	991 STEPHANIE WY	MINDEN, NV	89423-8816	200
142007113008	MALAVAZOS, GREGORY A & CAROL J	3537 SILVERADO DR	CARSON CITY, NV	89705	200
142007113009	MALAVAZOS, GREGORY A & ALEX J	3537 SILVERADO DR	CARSON CITY, NV	89705	200
142007113010	FOULKES, DAVID J & TIMOTEA	886 MEADOW VISTA DR	CARSON CITY, NV	89705	200
142007113011	ROMAN, BLAIR & SUSAN K	888 MEADOW VISTA DR	CARSON CITY, NV	89705	200
142007113012	ROBERTS, JASON & KATIE	890 MEADOW VISTA DR	CARSON CITY, NV	89705	200
142007113013	VON EPP, CURTIS & AUDREY	2206 KNOXVILLE AV	LONG BEACH, CA	90815	200
142007113014	MCCALISTER, MARILYN TRUSTEE	P O BOX 2043	STATELINE, NV	89449	200
142007113015	KADE, JAMES E & BERNICE C TTEES	895 MEADOW VISTA DR	CARSON CITY, NV	89705	200
142007113016	CUNHA, WILLIAM E & SUSANN S	1793 LANTANA DR	MINDEN, NV	89423	200
142007113017	HOLLIDAY, RALPH W & D I & M	1325 CATHY LN	MINDEN, NV	89423	200
142007113018	HERBERT, COLIN R	353 ROYAL TROON DR	DAYTON, NV	89403	200
142007113019	BUSTAMANTE, JONATHAN & SABINA	887 MEADOW VISTA DR	CARSON CITY, NV	89705	200
142007113020	BILLINGS, DALE A & SUSAN DACEY	7507 43 ST CT NW	GIG HARBOR, WA	98335	200
142007113021	MORRILL, STEVEN A	883 MEADOW VISTA DR	CARSON CITY, NV	89705	200
142007113022	PACK, JEFFREY B & LAURIE	881 MEADOW VISTA DR	CARSON CITY, NV	89705	200
142007113023	BROOKS, VINCENT M & NICKEY L	983 RANCHVIEW CI	CARSON CITY, NV	89705	200
142007113024	POWERS, SHARON	877 MEADOW VISTA DR	CARSON CITY, NV	89705	200
142007113025	MCGAFFIN, PATRICIA M	875 MEADOW VISTA DR	CARSON CITY, NV	89705	200
142007113026	BRYTE, MARIAN A	873 MEADOW VISTA DR	CARSON CITY, NV	89705	200
142007113027	MILLER, SHANE & WENDY TRUSTEES	874 RIDGECREST DR	CARSON CITY, NV	89705	200
142007113028	RELVAS, JAMES W TRUSTEE	PO BOX 1727	ZEPHYR COVE, NV	89448	200
142007113029	BONGI, ANGELA E	877 VALLEY VISTA DR	CARSON CITY, NV	89705	200
142007113030	HOLBROOK, RICHARD JR & CRYSTAL	865 VALLEY VISTA DR	CARSON CITY, NV	89705	200
142007113031	LAMBERT, CHARLES A & MARY A	864 VALLEY VISTA DR	CARSON CITY, NV	89705	200
142007113032	MCCORMICK, WILLIAM V & LINDA L	4867 MONTE MAR DR	EL DORADO HILLS, CA	95762	200
142007114001	PINKIND, LUCILLE	878 VALLEY VISTA DR	CARSON CITY, NV	89705	200
142007114002	POWELL, JAMES A III & SUZANNE M	880 VALLEY VISTA DR	CARSON CITY, NV	89705	200
142007114003	HYDE, WILLIE BELL SUCC TTEE	882 VALLEY VISTA DR	CARSON CITY, NV	89705	200
142007114004	KING, JASON H & VALERIE G	886 VALLEY VISTA DR	CARSON CITY, NV	89705	200
142007114005	CAMERON, MARY E	888 VALLEY VISTA DR	CARSON CITY, NV	89705	200
142007114006	LAIRD, DOUGLAS R	3566 OVERLOOK CT	CARSON CITY, NV	89705	200
142007114007	MARTIN FAMILY ENTERPRISES LLC	1250 67TH ST	EMERYVILLE, CA	94608	200

Clear Creek Property Owners.xls

142007114008	OWENS, MARK & TAMMY	3570 OVERLOOK CT	CARSON CITY, NV	89705	200
142007114009	MUSSETT, MICHAEL S & WARUNEE	1079 WISTERIA DR	MINDEN, NV	89423	200
142007114010	EBERSMAN, PAUL	PO BOX 1057	CARSON CITY, NV	89702	200
142007114011	SMITH, MARTHA SUE	898 VALLEY VISTA DR	CARSON CITY, NV	89705	200
142007114012	ROWE, TIMOTHY G & CUMMINGS, H E	3569 OVERLOOK CT	CARSON CITY, NV	89705	200
142007114015	HOPPIN, DARBY E & MAUDENE C	891 VALLEY VISTA DR	CARSON CITY, NV	89705	200
142007114016	KINGHAM, EDWIN H	887 VALLEY VISTA DR	CARSON CITY, NV	89705	200
142007114017	STOFFELS, FRANK E & KAREN L	885 VALLEY VISTA DR	CARSON CITY, NV	89705	200
142007114018	BROOKS, VINCENT M & NICKEY L	983 RANCHVIEW CI	CARSON CITY, NV	89705	200
142007114019	ROKOSKIE, GREGORY & SANDRA	879 VALLEY VISTA DR	CARSON CITY, NV	89705	200
142007115001	SMITH, DANNY & ELIZABETH A	3554 SILVERADO DR	CARSON CITY, NV	89705	200
142007115002	VERNI, DIANA M	876 VISTA PARK DR	CARSON CITY, NV	89705	200
142007115003	ALLEN, ROBERT & LINDA	1400 KIM PL	MINDEN, NV	89423	200
142007115004	ALAMILLO, ALFONSO & LETICIA	882 VISTA PARK DR	CARSON CITY, NV	89705	200
142007115005	MARTINEZ, SERGIO M & MARIA A DE	886 VISTA PARK DR	CARSON CITY, NV	89705	200
142007116001	WEATHERS, JOHN I & JEANNINE J	3548 SILVERADO DR	CARSON CITY, NV	89705	200
142007116002	PARKIN, SUZETTE T	125 SAND WEDGE PL	WALNUT CREEK, CA	94598-2111	200
142007116003	LAWLER, HAROLD L & BEVERLY J	3552 SILVERADO DR	CARSON CITY, NV	89705	200
142007117001	CRAIG, RICHARD K TRUSTEE	844 VALLEY CREST DR	CARSON CITY, NV	89705	200
142007117002	PAXSON, HANK J & ANGELA M	848 VALLEY CREST DR	CARSON CITY, NV	89705	200
142007117003	COLLINS, BEVERLY J ET AL*	852 VALLEY CREST DR	CARSON CITY, NV	89705	200
142007117004	SYNCON HOMES	990 IRONWOOD DR	MINDEN, NV	89423	120
142007117005	SYNCON HOMES	990 IRONWOOD DR	MINDEN, NV	89423	120
142007117006	PALAROAN, DERWIN S & CHRISTINA	861 VALLEY CREST DR	CARSON CITY, NV	89705	200
142007117007	NOVOTNY, KEITH & DANA	PO BOX 1159	ZEPHYR COVE, NV	89448	200
142007117008	MILLER, CHERYL R	857 VALLEY CREST DR	CARSON CITY, NV	89705	200
142007117009	ZIEMER, MARVIN L & KAREN A	P O BOX 2525	MINDEN, NV	89423	200
142007117010	ABRAHAMSON, WILLIAM ALLEN SR	853 VALLEY CREST DR	CARSON CITY, NV	89705	200
142007117011	NOVOTNY, KEITH A & DANA M	PO BOX 1159	ZEPHYR COVE, NV	89448	200
142007117012	AUTRE, ROBERT E & GEORGIA L	PO BOX 544	MINDEN, NV	89423	200
142007117013	SOULAGES, DAVID F & JANICE H	856 MEADOW VISTA DR	CARSON CITY, NV	89705	200
142007117014	MAY, ANN MARIE TRUSTEE	858 MEADOW VISTA DR	CARSON CITY, NV	89705	200
142007117015	YOUNG, HOWARD N & LINDA S	860 MEADOW VISTA DR	CARSON CITY, NV	89705	200
142007117016	TRUMBULL, DORIS I	861 MEADOW VISTA DR	CARSON CITY, NV	89705	200
142007117017	HORN, WILLIAM J JR & AGNES A	859 MEADOW VISTA DR	CARSON CITY, NV	89705	200
142007117018	GOUDEY, RAY J & JEANETTE NELSON	P O BOX 757	GENOA, NV	89411	200
142007117019	CARTER, ANNETTE	855 MEADOW VISTA DR	CARSON CITY, NV	89705	200
142007117020	DYMESICH, A JOSEPH TRUSTEE	853 MEADOW VISTA DR	CARSON CITY, NV	89705	200
142007117021	MALAVAZOS, GREGORY A & CAROL J*	3537 SILVERADO DR	CARSON CITY, NV	89705	200
142007117022	MALAVAZOS, GREGORY A & ALEX J	3537 SILVERADO DR	CARSON CITY, NV	89705	200
142007117023	PATTERSON, KATHLEEN M	PO BOX 935	DIABLO, CA	94528	200
142007117024	WALKER, JO	9720 LEMKE CT	RENO, NV	89521-6169	200
142007117025	MALAVAZOS, GREGORY A & ALEX J	3537 SILVERADO DR	CARSON CITY, NV	89705	200
142007117026	PATTERSON, KATHLEEN M	P O BOX 935	DIABLO, CA	94528	200
142007117027	BEISCH, EUGENE F & ELEANOR R	858 VALLEY VISTA DR	CARSON CITY, NV	89705	200
142007117028	NOBRIGA, DARIN & KARIN	860 VALLEY VISTA DR	CARSON CITY, NV	89705	200
142007117029	STASTNY, MICHAEL F & KATHLEEN A	862 VALLEY VISTA DR	CARSON CITY, NV	89705	200
142007117030	TURNER, STEVEN ALAN	P O BOX 692	CARSON CITY, NV	89702	200
142007117031	CHILDRESS, LEON	861 VALLEY VISTA DR	CARSON CITY, NV	89705	200

Clear Creek Property Owners.xls

142007117032	BARLOW, SHELLEY F TRUSTEE	1218 JACKIE LN	MINDEN, NV	89423	200
142007117033	MASSELL, LYNN	857 VALLEY VISTA DR	CARSON CITY, NV	89705	200
142007117034	WILLIAMS, GREGORY W & MARY E	422 S CAMELLIA ST	ANAHEIM, CA	92804	200
142007117035	MONTANEZ, ISMAEL G & ELIZABETH	853 VALLEY VISTA DR	CARSON CITY, NV	89705	200
142007117036	MCKENZIE, MICHAEL S	851 VALLEY VISTA DR	CARSON CITY, NV	89705	200
142007117037	HEARNE, WILLIAM JR	841 VALLEY CREST DR	CARSON CITY, NV	89705	200
142007117038	ANZELONE, JOHN & JAIME	839 VALLEY CREST DR	CARSON CITY, NV	89705	200
142007201005	SYNCON HOMES	990 IRONWOOD DR	MINDEN, NV	89423	240
142007210001	RUFFO, RONALD A & MARY ANN	3550 GREEN ACRE DR	CARSON CITY, NV	89705	200
142007210002	LEISEK, JOHN G & KAREN S	3540 GREEN ACRE DR	CARSON CITY, NV	89705	200
142007210003	HILLER, JEFFERY A & LINDA L	3530 GREEN ACRE DR	CARSON CITY, NV	89705	200
142007210004	FARHOOD, VINCENT W & SUSAN V	18234 MALLARD ST	WOODLAND, CA	95695	120
142007210005	STOLLE, MARK S & TERRI L	3510 GREEN ACRE DR	CARSON CITY, NV	89705	200
142007210006	MOGAB, RONALD & LORRAINE G PEET	805 PAWNEE ST	CARSON CITY, NV	89705	200
142007210009	GENTNER, VIRGIL R	3080 GREENBRIAR DR	LAS VEGAS, NV	89121	120
142007210010	BAETA, MARY E	3515 GREEN ACRE DR	CARSON CITY, NV	89705	200
142007210011	WISE, W A & ROBERT A & MARIE P	P O BOX 1062	TAHOE CITY, CA	96145	200
142007210012	GARRIGAN, LOREN E	3525 GREEN ACRE DR	CARSON CITY, NV	89705	200
142007210013	HURZEL, KAREN & STIVER, F W	3535 GREEN ACRE DR	CARSON CITY, NV	89705	200
142007210015	SPECTOR, LARRY D TRUSTEE	924 INCLINE WY STE 4A	INCLINE VILLAGE, NV	89450	120
142007211001	ANDERSON, CHARLES R	5274 EUGENE AV	LAS VEGAS, NV	89108	180
142007211002	MENDONCA, CLIFFORD	P O BOX 1541	CARSON CITY, NV	89702-1541	200
142007211003	KAISER, DAVID & SHIRLEY L TRUST	3514 SHAWNEE DR	CARSON CITY, NV	89705	200
142007211005	HARPER, TOD A & CHRISTINA M	3501 SHAWNEE DR	CARSON CITY, NV	89705	310
142007211006	LANINGHAM, CALVIN & STEPHANIE	881 VALLEY CREST DR	CARSON CITY, NV	89705	120
142007211007	SMITH, ALEXANDER	3521 SHAWNEE DR	CARSON CITY, NV	89705	200
142007211008	FELETAR, KENNETH W & NORMA J	3535 SHAWNEE DR	CARSON CITY, NV	89705	200
142007211009	JORGENSEN, JAMES	3500 SHAWNEE DR	CARSON CITY, NV	89705	200
142007212001	CAMPBELL, WINSTON G	PO BOX 1259	ALPINE, CA	91903	200
142007212002	TRACY, NANETTE TRUSTEE	963 TOPSY LN #306	CARSON CITY, NV	89705	200
142007212003	RAINWATER, DENNIS R & JANE E	3542 GRAND VIEW CT	CARSON CITY, NV	89705	200
142007212004	MCCREAGH, JOHN & HELEN TRUSTEES	3540 GRAND VIEW CT	CARSON CITY, NV	89705	200
142007212005	MARLOW, SUSAN	3538 GRAND VIEW CT	CARSON CITY, NV	89705	200
142007212006	KINDER, DAVID M & PATRICIA A	3536 GRAND VIEW CT	CARSON CITY, NV	89705	200
142007212007	DELONGCHAMPS, JANIS C	3541 SILVERADO DR	CARSON CITY, NV	89705	200
142007212008	MULLER, NICHOLAS T & JEAN B	3543 SILVERADO DR	CARSON CITY, NV	89705	200
142007212009	SYNCON HOMES	990 IRONWOOD DR	MINDEN, NV	89423	200
142007212010	CARLSON, WAYNE R & LEAH J	3547 SILVERADO DR	CARSON CITY, NV	89705	200
142007212011	DAROSS, ANTHONY J & CHRISTINE L	3549 SILVERADO DR	CARSON CITY, NV	89705	200
142007212012	CRAWFORD, CRAIG ROY & MYA E*	PO BOX 583	GENOA, NV	89411	200
142007213001	TREVITHICK, KEVIN W & JENNIFER	875 VISTA PARK DR	CARSON CITY, NV	89705	200
142007213002	CHUNG, NORMAN & PAULA	P O BOX 338	ZEPHYR COVE, NV	89448-0338	200
142007214001	PRATT, KEITH	7200 BOLLINGER RD #307	SAN JOSE, CA	95129	200
142007214002	ARNDT, JAMES R	827 VALLEY CREST DR	CARSON CITY, NV	89705	200
142007214003	KNESEK, MATTHEW	829 VALLEY CREST DR	CARSON CITY, NV	89705	200
142007214004	YOUNG, DONNA L TRUSTEE	831 VALLEY CREST DR	CARSON CITY, NV	89705	200
142007214005	NICHOLS, MICHELE & TOLMAN, CRAIG	3621 SHAWNEE DR	CARSON CITY, NV	89705	200
142007214006	MCCORMICK, WILLIAM V & LINDA L	4867 MONTE MAR DR	EL DORADO HILLS, CA	95762	200
142007214007	PROVAN, CLAIRE E	837 VALLEY CREST DR	CARSON CITY, NV	89705	200

Clear Creek Property Owners.xls

142007214008	WANNEMACHER, DAVID W & SUSAN F		842 VALLEY CREST DR	CARSON CITY, NV	89705	200
142007214009	HOWELL, CURTIS W & PRAX V		840 VALLEY CREST DR	CARSON CITY, NV	89705	200
142007214010	MALAVAZOS, GREGORY A & CAROL J		3537 SILVERADO DR	CARSON CITY, NV	89705	200
142007214011	HARTZELL, BERT H TRUSTEE		2366 HARRISON ST	SANTA CLARA, CA	95050	200
142007214012	CUTLER, RICHARD T & PORTER, S M		3526 SILVERADO DR	CARSON CITY, NV	89705	200
142007214013	STGERMAIN, LORRE M		421 E AV	CORONADO, CA	92118	200
142007214019	ROBINSON, MICHAEL & COLLEEN		3521 SILVERADO DR	CARSON CITY, NV	89705	200
142007214020	CLINGER, ANDREW K & STACIE R		3523 SILVERADO DR	CARSON CITY, NV	89705	200
142007214021	MILAEGER, KENT D & ROBIN E		3525 SILVERADO DR	CARSON CITY, NV	89705	200
142007214022	HARDIN, ROGER S & CHERYLE L		3527 SILVERDO DR	CARSON CITY, NV	89705	200
142007214023	LEIDICH, BETH A		3529 SILVERADO DR	CARSON CITY, NV	89705	200
142007214024	HIGH, THOMAS J & KATHLEEN J		3531 SILVERADO DR	CARSON CITY, NV	89705	200
142007214025	GOINS, SANDRA J		3533 SILVERADO DR	CARSON CITY, NV	89705	200
142007214026	NEVADA REAL PROPERTIES HOLDINGS		2132 DOVER CT	WALNUT CREEK, CA	94598	200
142007214027	MALAVAZOS, GREGORY & CAROL J*		3537 SILVERADO DR	CARSON CITY, NV	89705	200
142007214028	CHANDLER, MARK & ESTA		3539 SILVERADO DR	CARSON CITY, NV	89705	200
142007510001	CHILTON, KAREN & JOHN & VIRGINI		898 VALLEY CREST DR	CARSON CITY, NV	89705	200
142007510002	ONEIL, LA VERNE LOIS TRUSTEE		900 VALLEY CREST DR	CARSON CITY, NV	89705	200
142007510003	METHERELL, STEPHEN & LETICIA		902 VALLEY CREST DR	CARSON CITY, NV	89705	200
142007510004	MCCARTHY, EDWARD		PO BOX 562070	SO LAKE TAHOE, CA	96156	200
142007510005	VEGA, EDUARDO & PEREZ, GLORIA		906 VALLEY CREST DR	CARSON CITY, NV	89704	200
142007510006	HERBERT, COLIN R		353 ROYAL TROON DR	DAYTON, NV	89403	200
142007510008	BROWN, DUAYNE B TRUSTEE		901 VALLEY CREST DR	CARSON CITY, NV	89705	200
142007510009	BILLINGS, DALE A & SUSAN DACEY		7507 43 ST CT NW	GIG HARBOR, WA	98335	200
142007511001	MALAVAZOS, GREGORY A & CAROL J		3537 SILVERADO DR	CARSON CITY, NV	89705	200
142007511002	BROOKS, VINCENT M & NICKEY L		983 RANCHVIEW CI	CARSON CITY, NV	89705	200
142007511009	SHUMAKER, RICK L & EVELYN D		899 MEADOW VISTA DR	CARSON CITY, NV	89705	200
142007511010	SEBEK, DENICE K		897 MEADOW VISTA DR	CARSON CITY, NV	89705	200
142007512001	HORNER, HERBERT J & IRENA		900 VALLEY VISTA DR	CARSON CITY, NV	89705	200
142008101004	PROJECT LM LLC	C/O JOHN SERPA	PO BOX 1724	CARSON CITY, NV	89702	100
142008401001	SGC NEVADA LLC		2308 PROMETHEUS CT	HENDERSON, NV	89014	440
142008501002	CONWAY, DENNIS B & MARCIA TTEES		3590 CENTER DR	CARSON CITY, NV	89701	120
142008501003	HILL, DOUGLAS M		P O BOX 1794	CARSON CITY, NV	89702	200
142008701002	NEVADA, STATE OF	DIVISION OF STATE LANDS	333 W NYE LN #118	CARSON CITY, NV	89706	100

NAC 445A.124 Class A waters: Description; beneficial uses; quality standards. ([1. NRS 445A.425, 445A.520](#))

1. Class A waters include waters or portions of waters located in areas of little human habitation, no industrial development or intensive agriculture and where the watershed is relatively undisturbed by man's activity.

2. The beneficial uses of class A waters are municipal or domestic supply, or both, with treatment by disinfection only, aquatic life, propagation of wildlife, irrigation, watering of livestock, recreation including contact with the water and recreation not involving contact with the water.

3. The quality standards for class A waters are:

Item	Specifications
Floating solids, sludge deposits, or taste- or odor-producing substances.	None attributable to man's activities.
Sewage, industrial wastes or other wastes.	None.
Toxic materials, oils, deleterious substances, colored or other wastes.	None.
Settleable solids.	Only amounts attributable to man's activities which will not make the waters unsafe or unsuitable as a drinking water source or which will not be detrimental to aquatic life or for any other beneficial use established for this class.
pH.	6.5 to 9.0 SU.
Dissolved oxygen.	≥6.0 mg/l.
Temperature: Maximum. Δ?T.	≤20°C. =0°C.
Fecal coliform (No./100ml).	≤200/400. ^a
Total phosphorus (as P): In any stream at the point where it enters a reservoir or lake. In any reservoir or lake. In a stream or other flowing water.	≤0.05 mg/l. ≤0.025 mg/l. ≤0.10 mg/l.
Total dissolved solids.	≤500 mg/l or one-third above that characteristic of natural conditions (whichever is less).

a. The fecal coliform concentration, based on a minimum of five samples during any 30-day period, must not exceed a geometric mean of 200 per 100 milliliters, and not more than 10 percent of total samples during any 30-day period may exceed 400 per 100 milliliters.

4. The waters classified as class A are:

CARSON CITY			
Water	HR	HA	Description of Area Classified
Ash Canyon	8	104	From its origin to the first point of diversion of the Carson City Water Department, near the west line of section 12, T. 15 N., R. 19 E., M.D.B. & M.
Clear Creek	8	104	From its origin to gaging station number 10-3105, located in the NE 1/4 of the NE 1/4 of section 1, T. 14 N., R. 19 E., M.D.B. & M.
Kings Canyon	8	104	From its origin to the point of the diversion of the Carson City Water Department, near the east line of section 23, T. 15 N., R. 19 E., M.D.B. & M.

NAC 445A.125 Class B waters: Description; beneficial uses; quality standards. ([NRS 445A.425](#), [445A.520](#))

1. Class B waters include waters or portions of waters which are located in areas of light or moderate human habitation, little industrial development, light-to-moderate agricultural development and where the watershed is only moderately influenced by man's activity.

2. The beneficial uses of class B water are municipal or domestic supply, or both, with treatment by disinfection and filtration only, irrigation, watering of livestock, aquatic life and propagation of wildlife, recreation involving contact with the water, recreation not involving contact with the water, and industrial supply.

3. The quality standards for class B waters are:

Item	Specifications
Floating solids, settleable solids or sludge deposits.	Only such amounts attributable to man's activities which will not make the waters unsafe or unsuitable as a drinking water source or injurious to fish or wildlife, or will not impair the waters for any other beneficial use established for this class.
Sewage, industrial wastes or other wastes.	None which are not effectively treated to the satisfaction of the Department.
Odor-producing substances.	Only such amounts which will not impair the palatability of drinking water or fish or have a deleterious effect upon fish, wildlife or any beneficial uses established for waters of this class.
Toxic materials, oil, deleterious substances, colored or other wastes, or heated or cooled liquids.	Only such amounts as will not render the receiving waters injurious to fish or wildlife or impair the receiving waters for any beneficial uses established for this class.
pH.	6.5 to 9.0 SU.

Item	Specifications
Dissolved oxygen:	≥ 6.0 mg/l.
Trout waters. ^a	≥ 5.0 mg/l.
All other waters.	
Temperature:	$\leq 20^{\circ}\text{C}$.
Maximum:	$\leq 24^{\circ}\text{C}$.
Trout waters. ^a	$= 0^{\circ}\text{C}$.
All other waters.	
ΔT .	
Fecal coliform (No./100ml).	$\leq 200/400$. ^b
Total phosphorus (as P).	≤ 0.10 mg/l.
Total dissolved solids.	≤ 500 mg/l or one-third above that characteristic of natural conditions (whichever is less).

a. Trout waters are identified in subsection 4 by the symbol “(T).”

b. The fecal coliform concentration, based on a minimum of five samples during any 30-day period, must not exceed a geometric mean of 200 per 100 milliliters, and not more than 10 percent of total samples during any 30-day period may exceed 400 per 100 milliliters.

4. The waters classified as class B are:

CARSON CITY			
Water	HR	HA	Description of Area Classified
Clear Creek (T)	8	104	From gaging station number 10-3105, located in the NE 1/4 of the NW 1/4 of section 1, T. 14 N., R. 19 E., M.D.B. & M., to the Carson River.