



Topaz Lake
Current Volume: 36,820 acre-feet



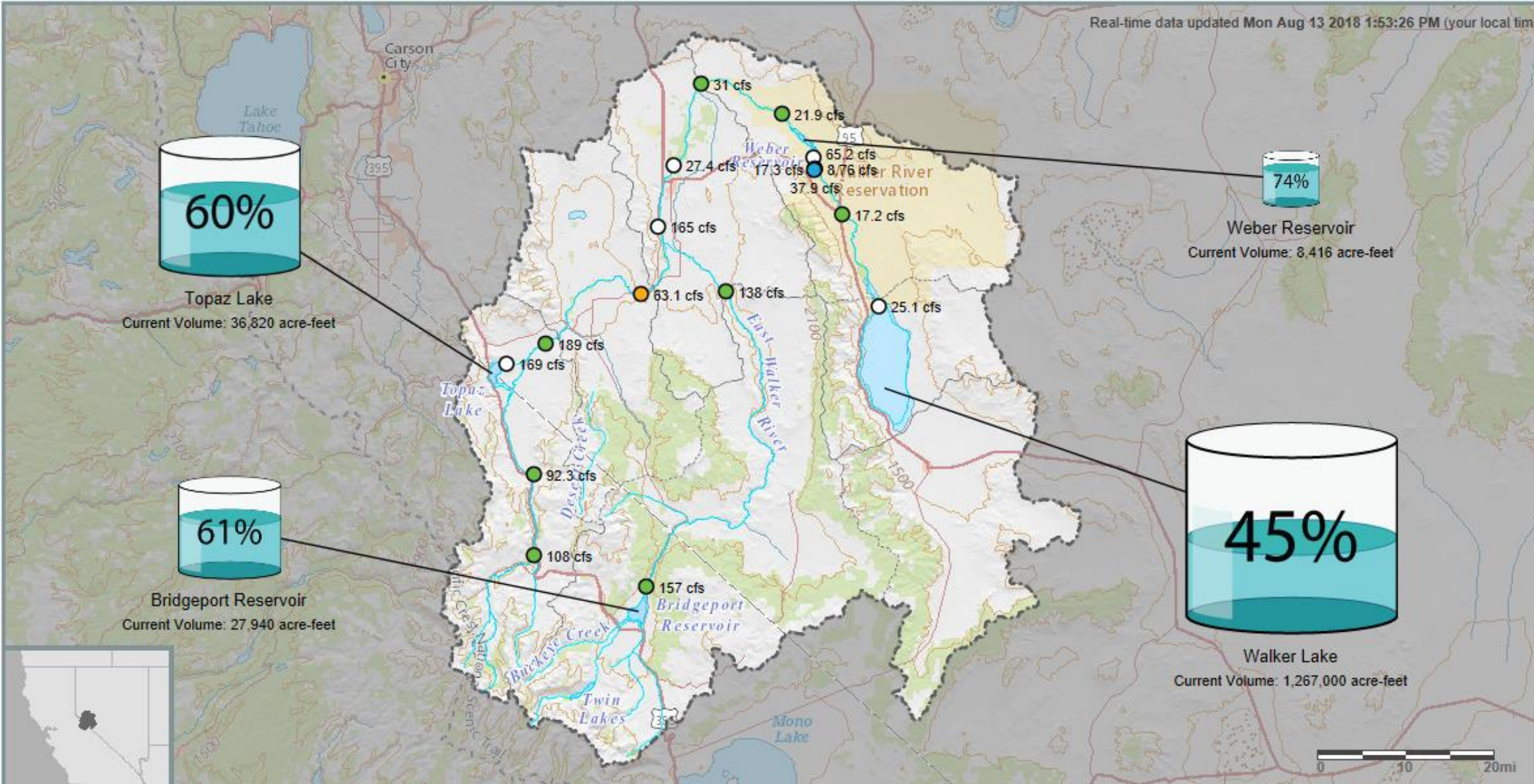
Weber Reservoir
Current Volume: 8,416 acre-feet



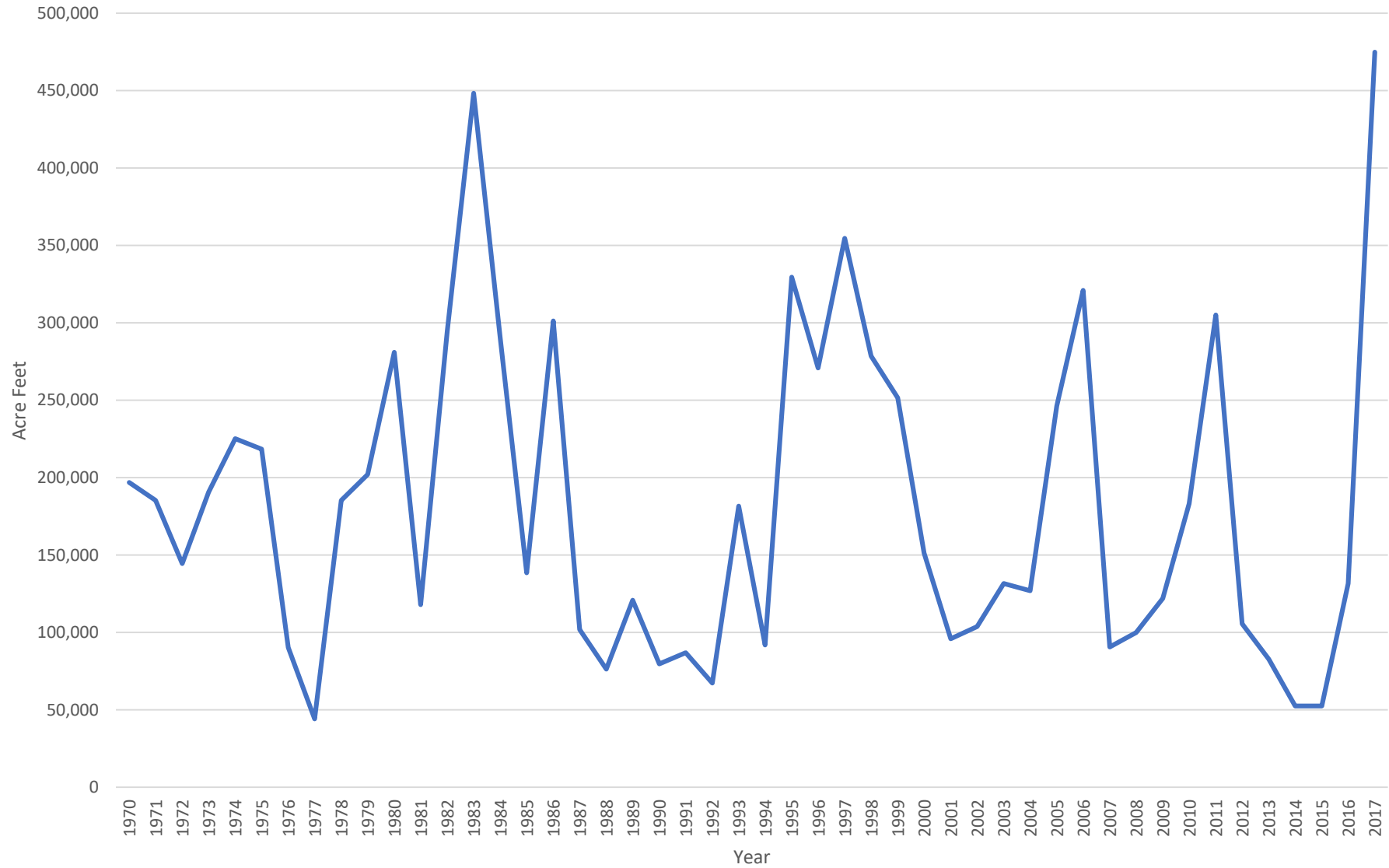
Bridgeport Reservoir
Current Volume: 27,940 acre-feet



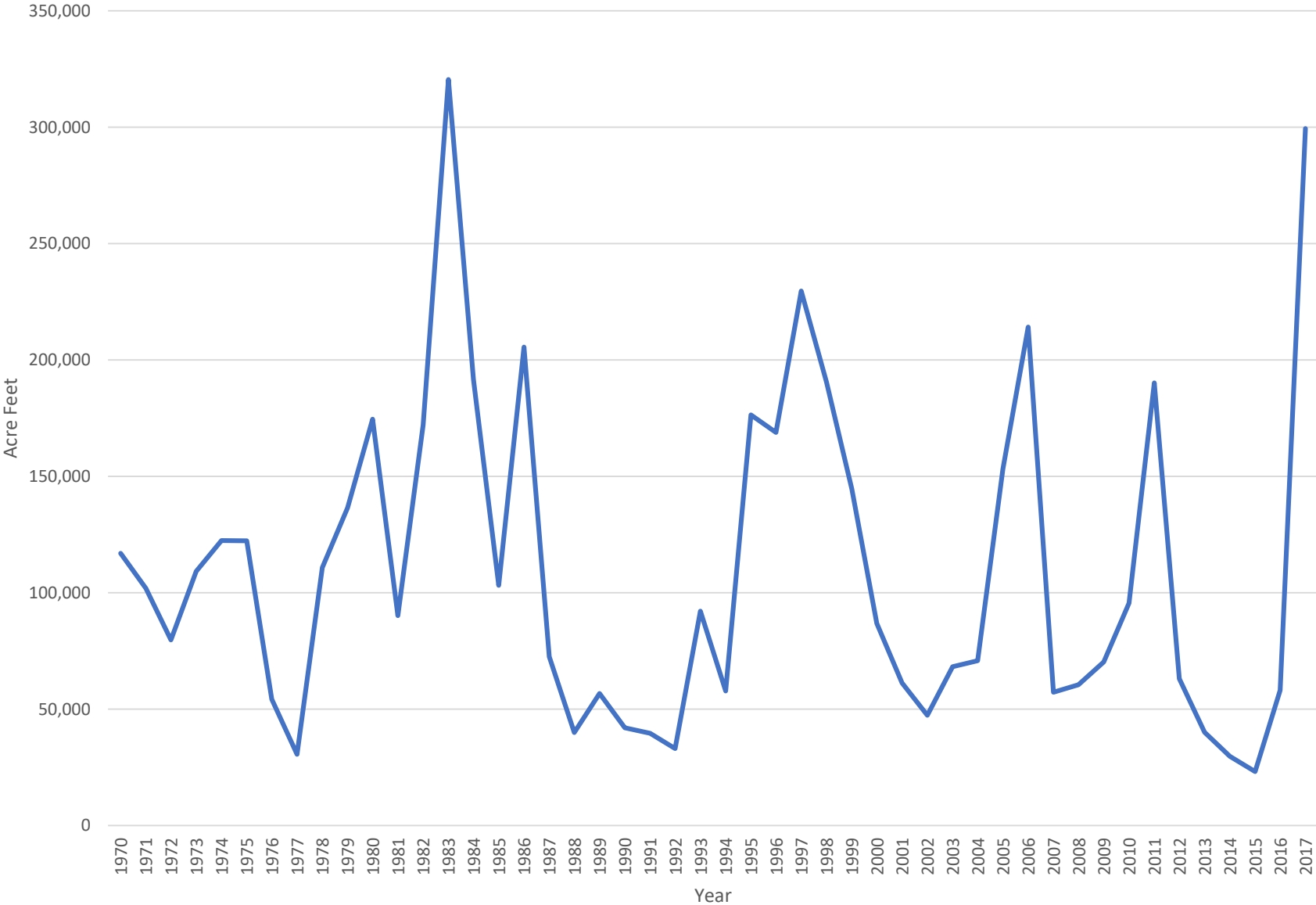
Walker Lake
Current Volume: 1,267,000 acre-feet



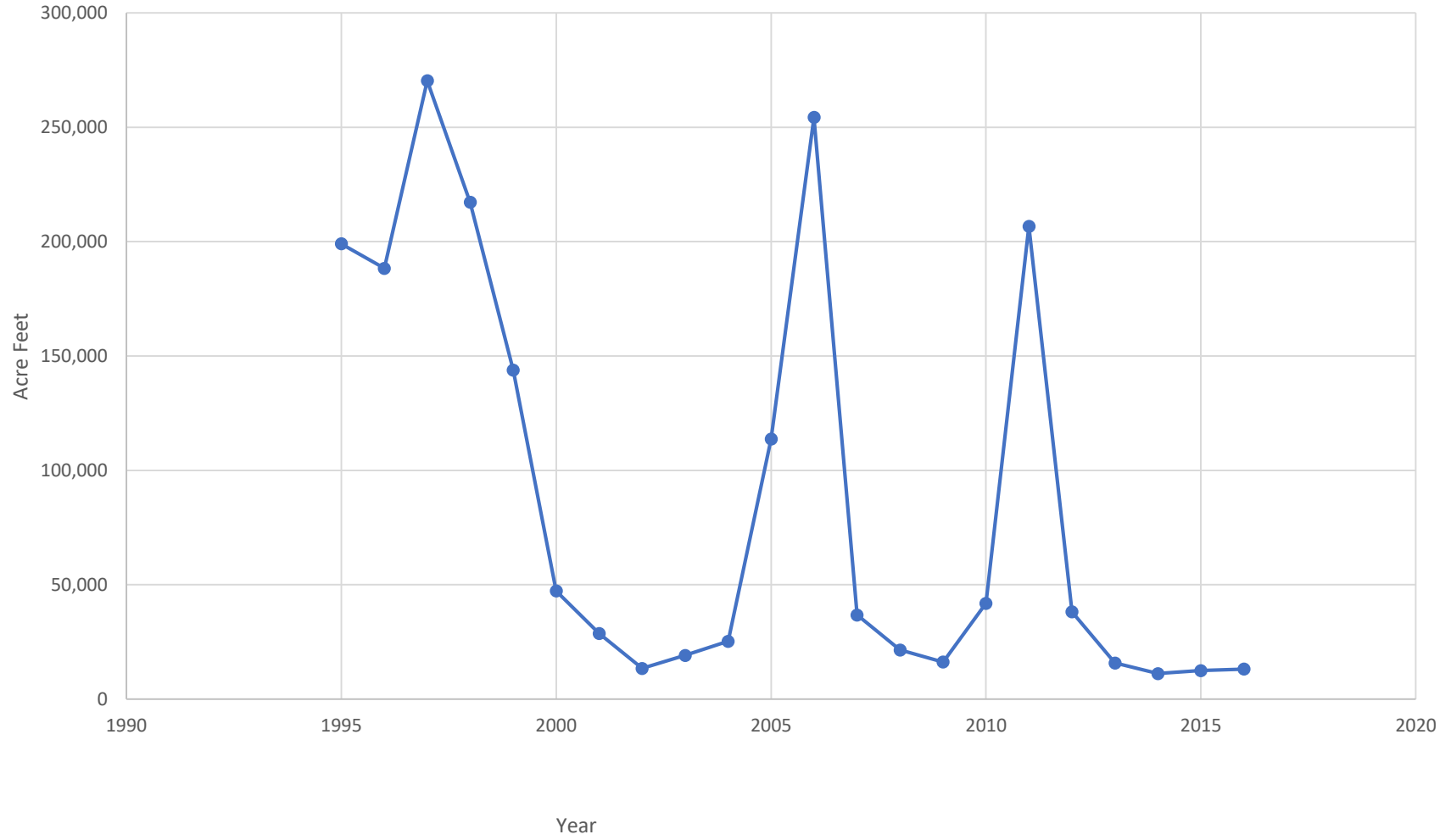
W. Walker River below Topaz



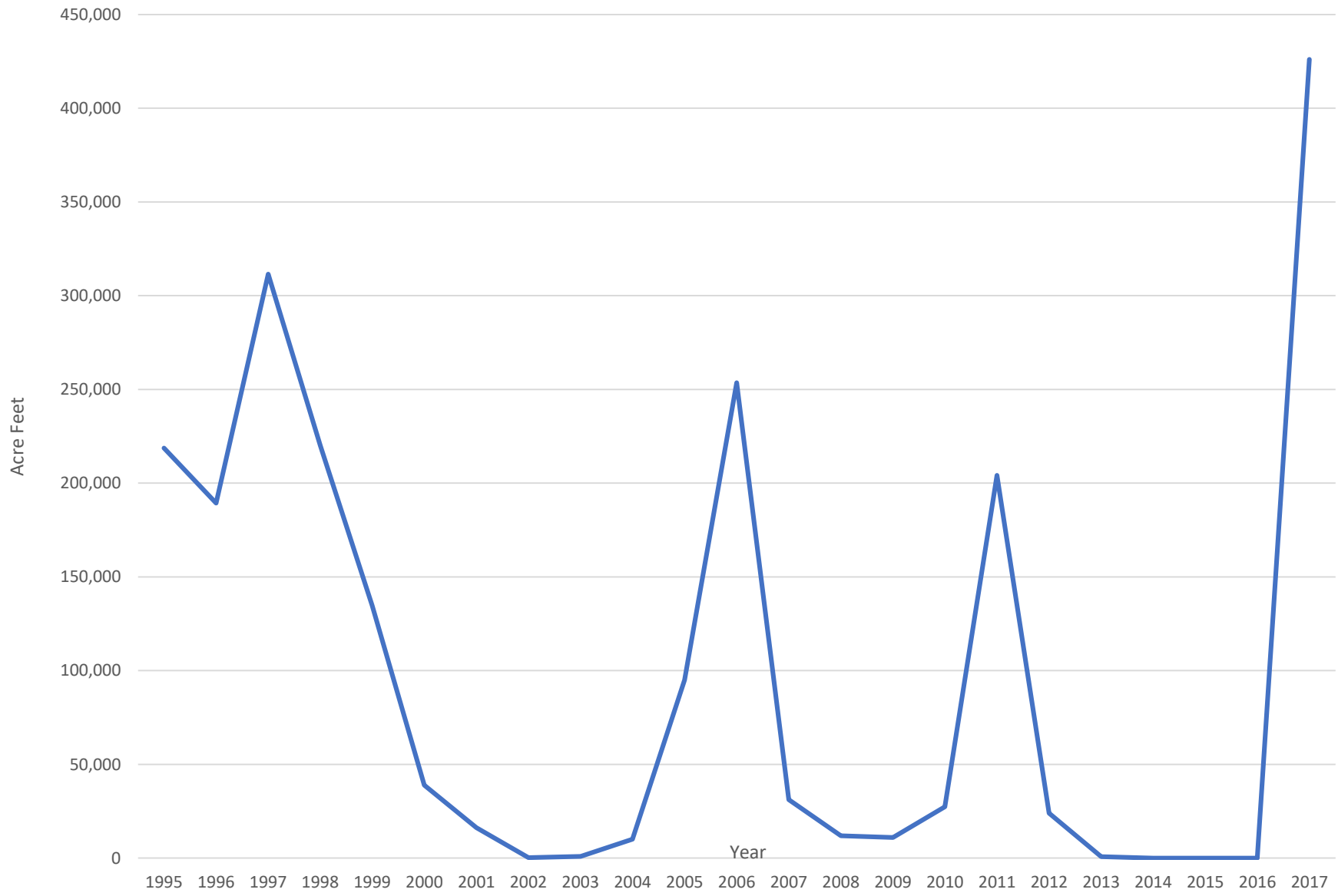
E. Walker below Bridgeport



Walker River Above Weber



Flows Into Walker Lake



Stream Flow For Walker River Watershed (1995-2016)

Acre-Feet

Gage	Average	Median	Lowest Flow
W. Walker	176,724	131,691	52,459
E. Walker	104,511	70,512	23,082
Wabuska	107,237	41,171	14,472
Above Weber	87,911	37,445	11,143
Walker Lake	81,789	25,651	0