

Appendix F

Carson River Corridor Maps

The following map series shows the location of the projects listed in the following tables.

Key for I.D. Codes:

B – Brockliss Slough
C – Mainstem Carson River
CV – Carson Valley
CC – Carson City
DV – Dayton Valley
E – East Fork
LV – Lahontan Valley
MC – Markleeville Creek
MS – Martin Slough
W – West Fork
WT – Washoe Tribe of Nevada and California

Types of Projects are defined as the following:

Rehabilitation/Stabilization – combination of hard and soft treatments designed to collect sediment, establish thalweg, and connect stream processes and forms.

Flood Protection – Projects designed to deal with high and overbank flows, encourage some plant recruitment and protect property. Most of these projects are emergency repair projects due to a flooding event.

Habitat Enhancement – Projects typically do not involve rockwork and include bank shaping and vegetation.

Floodplain Conservation – These projects are typically conservation easements or land acquisitions. The goal is to conserve floodplain lands and retain their natural function.

Completed River Rehabilitation Projects from 1995

Map I.D. Code*	Sub- Reach**	Project Title	Project Type***	Project Manager/ & Partners****	Year Completed
N/A	MC	Grover Hot Springs Meadow Stabilization Project	Rehabilitation/ Stabilization	AWG & CA State Parks	9/2006
WT-5	E-1	Heitman Diversion	Flood Protection	Washoe Tribe EP, FEMA	9/2006
WT-3	E-2	Tribal Levee	Flood Protection	Washoe Tribe EP; NRCS, WNRC&D	1997
WT-4	E-2	Washoe Tribe Streambank Protection	Flood Protection	Washoe Tribe EP; NRCS, WNRC&D	1997
WT-6	E-2	Wheeler Buckeye Diversion	Flood Protection	Washoe Tribe EP; FEMA	9/2006
WT-9	E-2	New Years Flood Fence Repair	Habitat Enhancement & Floodplain Conservation	Washoe Tribe EP, FEMA	2006
CV-1	E-2	Hatchery Streambank	Rehabilitation/ Stabilization	Douglas County; NRCS, CWSD, USFWS, WNRC&D, State of NV	1997
CV-2	E-2	Riverview Trail Park Streambank	Flood Protection	Douglas County; NRCS, CWSD, Riverview Trailer Park; WNRC&D, State of NV	1997
CV-3	E-2	Settelmeier Streambank	Rehabilitation/ Stabilization	Douglas County; NRCS, CWSD, Settelmeier Ranch, WNRC&D, State of NV	1997
CV-5	E-2	5 th Green Levee Original Project - Maintenance on Project	Flood Protection	Douglas County; NRCS, CWSD, Carson Valley Golf Course, State of NV	1997 2006
CV-7	E-2	Rocky/Virginia Levee	Flood Protection	Douglas County; NRCS, Carson Valley Golf Course, State of NV	1997
CV-28	E-2	Rocky/Virginia Levee	Flood Protection	CVCD; FEMA, landowner, CWSD, NDWR	3/2006
CV-8	E-3	Riverview Bridge Levee	Flood Protection	Douglas County; NRCS, CWSD, Carson Valley Golf Course, State of NV	1997
CV-9	E-3	Glenwood Drive Streambank	Rehabilitation/ Stabilization	Douglas County; NRCS	1995
CV-10	E-3	Rivertree Ranch Levee	Flood Protection	Douglas County, NRCS, CWSD,. Rivertree Ranch, State of NV	1997
CV-29	E-3	Cottonwood Diversion	Flood Protection	CVCD; FEMA, landowner, CWSD, NDWR	3/2006
CV-32	E-3	Stodieck Grade Control	Flood Protection	CVCD; FEMA, landowner, CWSD, NDWR	9/2006
CV-33	E-3	Topping #2 Diversion	Flood Protection	CVCD; FEMA, landowner, CWSD, NDWR	9/2006
CV-35	MS	Martin Slough Ponds	Habitat Enhancement	City of Gardnerville, NDEP	2000
CV-11	E-4	Lutheran Bridge to Highway 88	Rehabilitation/ Stabilization	Douglas County; NRCS, East Fork Ranch, Stodieck Ranch, Mack Ranch, FEMA, CWSD, WNRC&D, State of NV	1998
CV-12	E-4	Mack Ranch Levee	Flood Protection	Mack Ranch	Prior to 1995
CV-31	E-4	Madison Mack V-Weir Channel Repair	Flood Protection	CVCD; FEMA, Mack Ranch, CWSD, NDWR	9/2006

Map I.D. Code*	Sub- Reach**	Project Title	Project Type***	Project Manager/ & Partners****	Year Completed
CV-13	E-5	Highway 88 to Muller Lane	Rehabilitation/ Stabilization	Douglas County; NRCS, Park Cattle Company, CWSD, WNRC&D, State of NV	1998
CV-19	B-1	Thunderbird Ranch Levee	Flood Protection	Thunderbird Ranch, NRCS	1996
CV-20	B-1	Jones-West Streambank	Flood Protection	Thunderbird Ranch; CVCD, NDWR, CWSD	2006
CV-21	B-3	Sarman Ranch - Involved 2 river work days	Rehabilitation/ Stabilization	Sarman Ranch; NRCS, CVCD, CWSD, WNRC&D, State of NV	2002-2004
CV-24	W-2	River Fork Ranch Workday	Habitat Enhancement	CVCD; TNC, WNRC&D, CWSD	2003
CV-16	C-1	Lippencott	Flood Protection	Lippencott	NA
WT-1	C-1	Mallard Bend #1	Rehabilitation	Washoe Tribe EP; EPA	2004
WT-2	C-1	Mallard Bend #2	Rehabilitation	Washoe Tribe EP; EPA	2003
WT-7	C-1	Washoe Tribe Work Day #1	Habitat Enhancement	Washoe Tribe EP, community members, WNRC&D	2002
CV17	C-2	Prison Ranch Revetment	Habitat Enhancement	Prison; NRCS, CVCD, WNRC&D, CWSD	2004
CV18	C-2	Prison Ranch Willow bundles	Habitat Enhancement	Prison; NRCS, CVCD, WNRC&D, CWSD	2003
CV-30	C-3	Mexican Ranch	Flood Protection	CVCD; FEMA, Carson City, Mexican Dam Users, BLM, NDWR, CWSD	4/2006
CC-1	C-3	Mexican Dam Road	Flood Protection	DVCD; Carson City, CWSD, NRCS	1999
CC-2	C-3	Ambrose Nature Area	Rehabilitation	CVCD; NRCS Engineering, CWSD, NDEP, NDF, WNRC&D	2002
CC-3	C-3	Empire Ranch Golf Course	Rehabilitation	Empire Ranch Golf Course	1999
DV-008	C-4	Ricci Ranch/Tracey Property	Habitat Enhancement	DVCD; WNRC&D, NDEP, State of NV	11/1999
DV-101	C-4	JohnD Winters Ranch	Flood Protection	DVCD; NRCS, Lyon County, landowner, WNRC&D, State of NV	12/1997
DV-102	C-4	Ricci Diversion Grade Control	Habitat Enhancement	DVCD; NRCS, Lyon County, landowner, State of NV	3/1997
DV-103	C-4	Tracey Property	Habitat Enhancement & Flood Protection	DVCD; NRCS, Lyon County, WNRC&D, landowner, State of NV	2/1997
DV-104	C-5	Anderson Property	Habitat Enhancement & Flood Protection	DVCD; NRCS, Lyon County, landowner, WNRC&D, State of NV	2/1998
DV-105	C-5	Ricci Ranch	Habitat Enhancement	DVCD; NRCS, Lyon County, landowner, State of NV	2/1998
DV-112	C-5	Ricci Division Debris	Flood Protection	DVCD; CWSD, FEMA, landowner	4/2006
DV-106	C-6	Sbragia Property	Habitat Enhancement	DVCD; NRCS, Lyon County, landowner, WNRC&D, State of NV	2/1998
DV-107	C-6	Baroni Ditch	Habitat Enhancement	DVCD; NRCS, Lyon County, landowner, CWSD, State of NV	1/1998
DV-108	C-6	Cardelli Ditch	Habitat Enhancement	DVCD; NRCS, Lyon County, landowner,	2/1998

Map I.D. Code*	Sub- Reach**	Project Title	Project Type***	Project Manager/ & Partners****	Year Completed
				WNRC&D, CWSD, State of NV	
DV-109	C-6	Holley Ranch/Quilici Diversion	Rehabilitation/ Stabilization	DVCD; NRCS, Lyon County, landowner, WNRC&D, CWSD, State of NV	3/1998
DV-201	C-6	Army Corps Channel Restoration Project	Habitat Enhancement	DVCD; NRCS, WNRC&D, CWSD	1/1997
DV-001	C-7	Quilici Ranch/Rolling A Big Ranch	Rehabilitation/ Stabilization	DVCD; NDEP, CWSD, NRCS, landowner, State of NV	4/1997
DV-002	C-7	Empey Property	Rehabilitation/ Stabilization	DVCD; NRCS, Lyon County, landowner, CWSD, State of NV	4/1998
DV-003	C-7	Quilici Ranch	Habitat Enhancement	DVCD; WNRC&D, NRCS, CWSD, State of NV	4/1999
DV-009	C-7	Quilici Ranch/Rolling A Ranch	Rehabilitation/Stab.	DVCD; NDEP, CWSD, WNRC&D	
DV-004	C-7	Minor Ranch	Habitat Enhancement	DVCD; CWSD, WNRC&D, State of NV	4/1999
DV-010	C-7	Eitel/Hughes/Walker Properties	Rehabilitation/Stab.	DVCD; NDEP, WNRC&D, CWSD, State of NV	12/2001
DV-111	C-7	Empey Property/Minor Diversion	Rehabilitation/Stab.	DVCD NRCS, State of NV, CWSD	4/1998
DV-012	C-8	Borda and Minor Ranches	Rehabilitation/Stab.	DVCD; WNRC&D, CWSD, State of NV	2001-02
DV-006	C-8	Glancy Property	Rehabilitation/Stab.	DVCD; NDEP, WNRC&D, NRCS, CWSD	11/1998
DV-113	C-9	Hodges Transportation Levy Repair #1	Flood Protection	DVCD; CWSD, FEMA, landowner, State of NV	6/2006
DV-114	C-9	Hodges Transportation Levy Repair #2	Flood Protection	DVCD; CWSD, FEMA, landowner, State of NV	
DV-007	C-8	Fort Churchill Historic State Park	Rehabilitation	DVCD; NDEP, NV State Parks, WNRC&D	12/1998
NA	LV	Sediment Removal Project	Habitat Enhancement	LCD	1996-98
NA	LV	Rechel-Casey Property	Rehabilitation/Stab.	LCD, WNRC&D, CWSD	2002
NA	LV	Venturacci Property	Rehabilitation/Stab.	LCD, WNRC&D, CWSD	2002
NA	LV	Christensen Property	Rehabilitation/Stab.	LCD, WNRC&D, NDF, CWSD	2002
NA	LV	Debris Removal	N/A	LCD; NDF, CWSD, WNRC&D, State of NV	2006

Notes:

* This code corresponds to the river corridor maps located in Appendix F and project summary sheet located in Appendix G.

**With the exception of MC & LV, this code corresponds to the sub-reaches listed in table 5.10-2 derived from Interfluv (1996)

***Project Types – Project type categories are defined as the following:

Current (In-Process) River Rehabilitation Projects

Map I.D. Code*	Sub- Reach **	Project Title	Project Type***	Project Manager & Partners****	Estimated Completion Date
NA	MC	Markleeville Guard Station Restoration – Phase I	Rehabilitation & Floodplain Conservation	Alpine County, Alpine Watershed Group, USFS, CDWR	July 2011
CV-34	MS	Martin Slough Water Quality Enhancement Project	Rehabilitation	Douglas County; Douglas County Water Conveyance Advisory Committee, Douglas County School District, landowners, NDEP, State Lands Q1 program	2006
CV-25	C-1	Willowbend Streambank Protection & Restoration	Rehabilitation/ Stabilization	CVCD; Douglas County, State Lands Q1, property owners, CWSD, WNRC&D, State of NV	Fall 2007
CV-26	E-3	Carson Valley Golf Course Streambank Protection & Restoration Project	Rehabilitation/ Stabilization	CVCD; State Lands Q1, NWDR, CWSD, Carson Valley Golf Course, Hussman Ranch, Carson Truckee Conservancy District, Rivertree Ranch, State of Nevada, NRCS	February 2007
CV-27	E-6	Lower East Fork	Rehabilitation/Stabilization	CVCD; Park Cattle Company, Mr & Mrs. Hutt, TNC, CWSD, NDWR, State Lands Q1, Carson Truckee Conservancy District	2008
DV-115	C-7	Middle Carson River Stream Rehabilitation	Rehabilitation	DVCD; Lyon County, State Lands Q1, CWSD, landowners, Carson-Truckee Water Conservancy District, NDWR	2008
WT-10	C-1	Stewart Ranch Bank Protection #3	Habitat Enhancement, Rehabilitation/Stabilization	Washoe Tribe of Nevada and California	Contingent upon funding availability
WT-11	C-1	Stewart Ranch Bank Protection #4	Habitat Enhancement, Rehabilitation/Stabilization	Washoe Tribe of Nevada and California	Contingent upon funding availability
WT-12	C-1	Stewart Ranch Bank Protection #5	Habitat Enhancement, Rehabilitation/Stabilization	Washoe Tribe of Nevada and California	Contingent upon funding availability
WT-13	C-1	Stewart Ranch Bank Protection #6	Habitat Enhancement, Rehabilitation/Stabilization	Washoe Tribe of Nevada and California	Contingent upon funding availability
NA	LV	Debris Removal	N/A	LCD, NRCS, NDF	ongoing

Completed Floodplain Conservation Easements & Land Acquisitions

Map I.D. #*	Project Name	Project Location	Project Manager & Partners*	Type of Measure
FC-K	Kirman Field Conservation Easement	Carson Valley Sub-reach C-2	TNC; State Lands Q1, Donald Bentley, NDOW	Conservation Easement
FC-RFR	River Fork Ranch	Carson Valley Sub-reach C-1	TNC, Timken-Sturgis Foundation	Land Acquisition
FC-HR	Hussman Ranch	Carson Valley Sub-reach E-3	American Land Conservancy; BLM SNPLMA Program; Hussman Family	Conservation Easement
FC-BR	Byington Ranch	Carson Valley	Ranch Open Space of Nevada, Byington Family	Conservation Easement
FC-ANA	Ambrose Natural Area	Carson City Sub-reach C-3	Carson City	Land acquisition
FC-SSR	Silver Saddle Ranch	Carson City Sub-reach C-3	Carson City	Land acquisition
FC-RVP	Riverview Park	Carson City	Carson City	Land Acquisition
WT-8	River Corridor Fencing	Stewart Ranch Sub-reach C-1	Washoe Tribe EP, EPA, NDF, Washoe Development Group	Protection Project

In-Process Floodplain Conservation Easement & Land Acquisitions

Map I.D.#	Project Name	Project Location	Funding Program
FC AC P	Adams Canyon Property	Carson Valley near Genoa, Carson River	BLM SNPLMA Program
FC AD P	Flying J. Ranch Property	Carson Valley near Genoa, Carson River	BLM SNPLMA Program
FC R1 P	A.B. Ranch No. 1	Carson Valley near Genoa, Carson River	BLM SNPLMA Program
FC KN P	Knox Johnson Property	Carson Valley, West Fork	BLM SNPLMA Program
FC MR P	Mack Ranch Property	Carson Valley, East Fork	BLM SNPLMA Program
FC ST P	Stodieck Property	Carson Valley, East Fork	BLM SNPLMA Program,
FC WH P	White Property	Carson Valley	BLM SNPLMA Program
FC HE P	Henningsen Properties A,B	Carson Valley	BLM SNPLMA Program
FC SC P	Scossa Bros. Properties A, B	Carson Valley	BLM SNPLMA Program
FC JAR P	Jarrad Property	Carson City	State Lands Q1r
FC DES P	Desormier	Carson City	State Lands Q1
FC AND P	Anderson	Carson City	State Lands Q1
FC GIL P	Gilbert Property	Carson City	State Land Q1
NA	Churchill/Carson River Park System Phase I	Churchill County	State Lands Q1
NA	Soares Conservation Easement	Churchill County	State Lands Q1
NA	Biddinger Conservation Easement	Churchill County	State Lands Q1
NA	Bailey Conservation Easement	Churchill County	State Lands Q1
NA	Rambling River Ranches Conservation Easement Phase 2	Churchill County	State Lands Q1
NA	Wetlands Conservation Easement for Stillwater National Wildlife Refuge	Churchill County Stillwater Farms	BLM SNPLMA Program

Carson River Projects Map Series Index

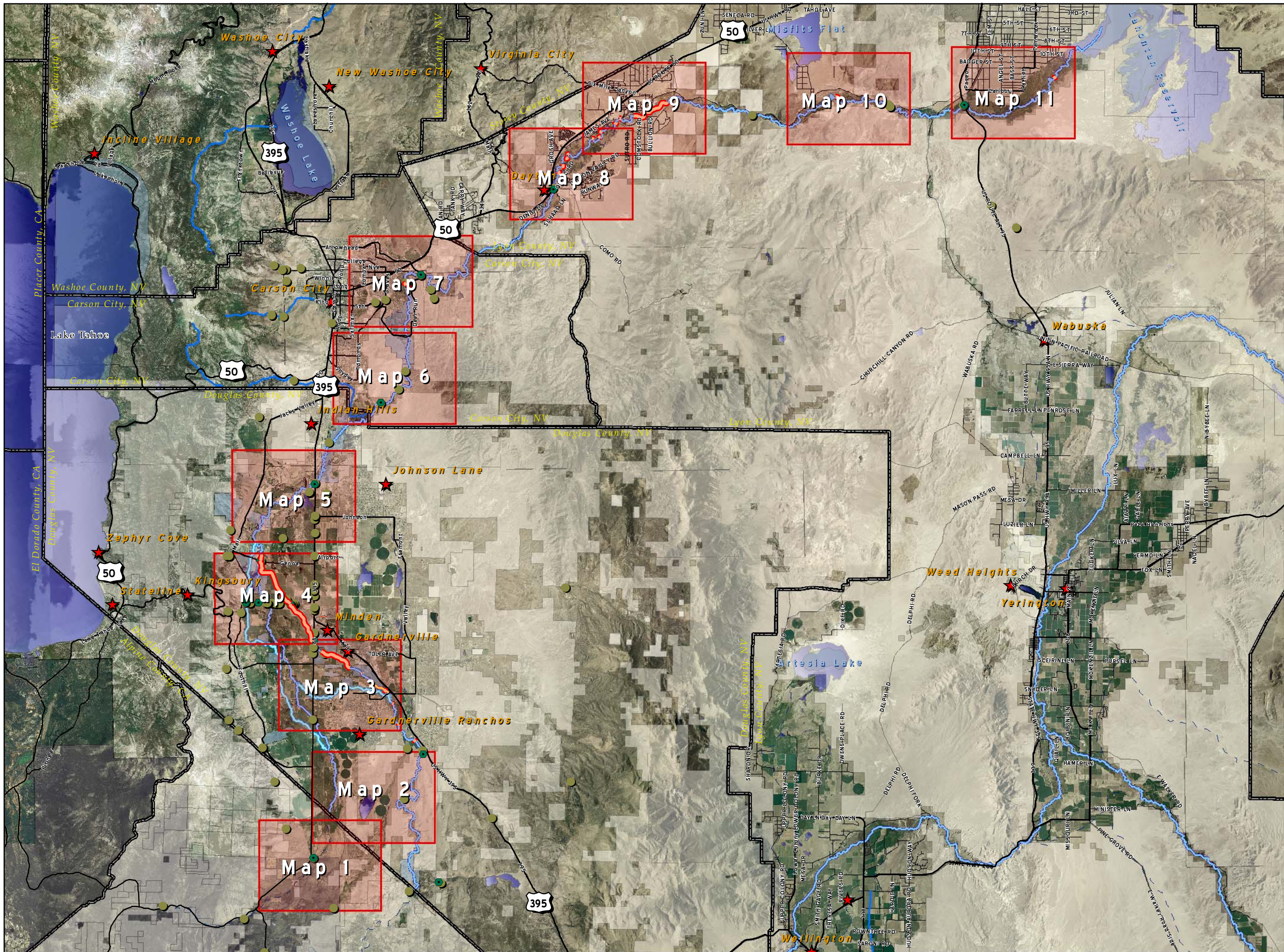
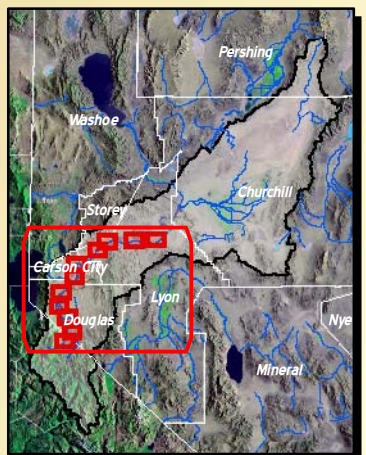
May 2007



0 8,750 17,500 35,000 Feet

Map Elements

- ★ Cities
- Carson Monitoring
- USGS Gaging Stations
- Proposed Projects
- Rehabilitation
- Roads
- Index Grid
- County Boundaries
- Public Lands
- Water Bodies
- Floodplain Conservation Easement



Carson River
Projects
Map Series #1

May 2007



Scale: 1:24,000



Map Elements



Carson Monitoring



Bridges



Grade Controls

Roads



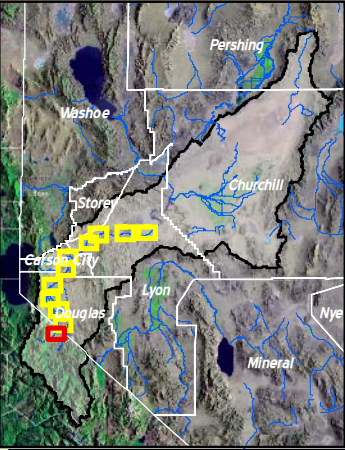
Public Lands



County Boundaries



Tribal Lands



Carson River Projects Map Series #2

May 2007

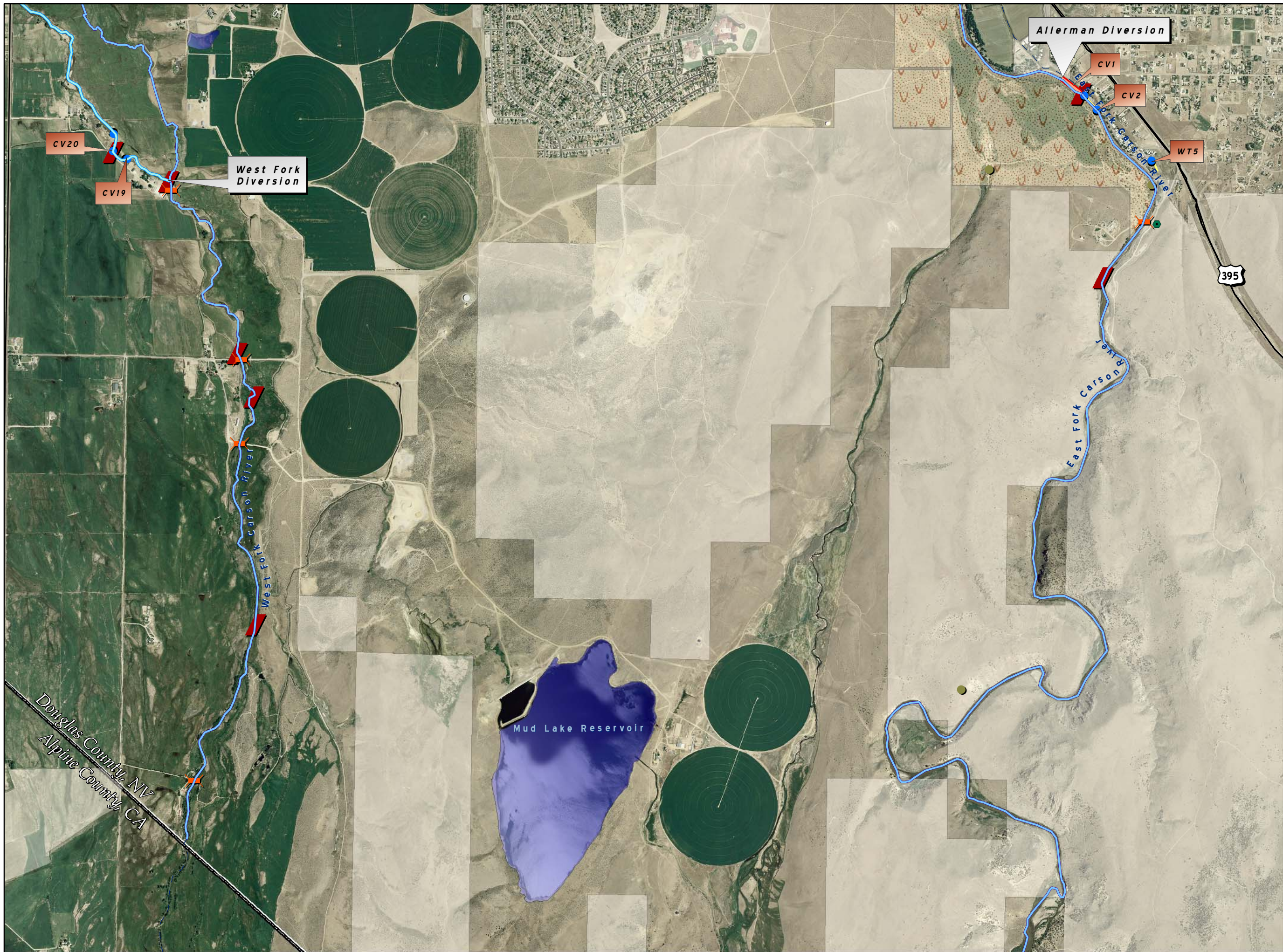
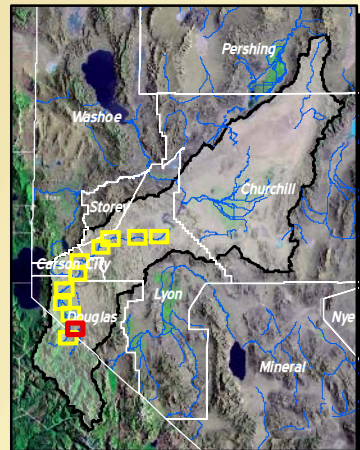


Scale: 1:24,000

0 800 1600 3200 Feet

Map Elements

- Carson Monitoring
- USGS Gaging Stations
- Grade Controls
- Roads
- Flood Protection
- Habitat Enhancement
- Rehabilitation
- Water Bodies
- Tribal Lands
- Public Lands
- County Boundaries



Carson River Projects

Map Series #3

May 2007

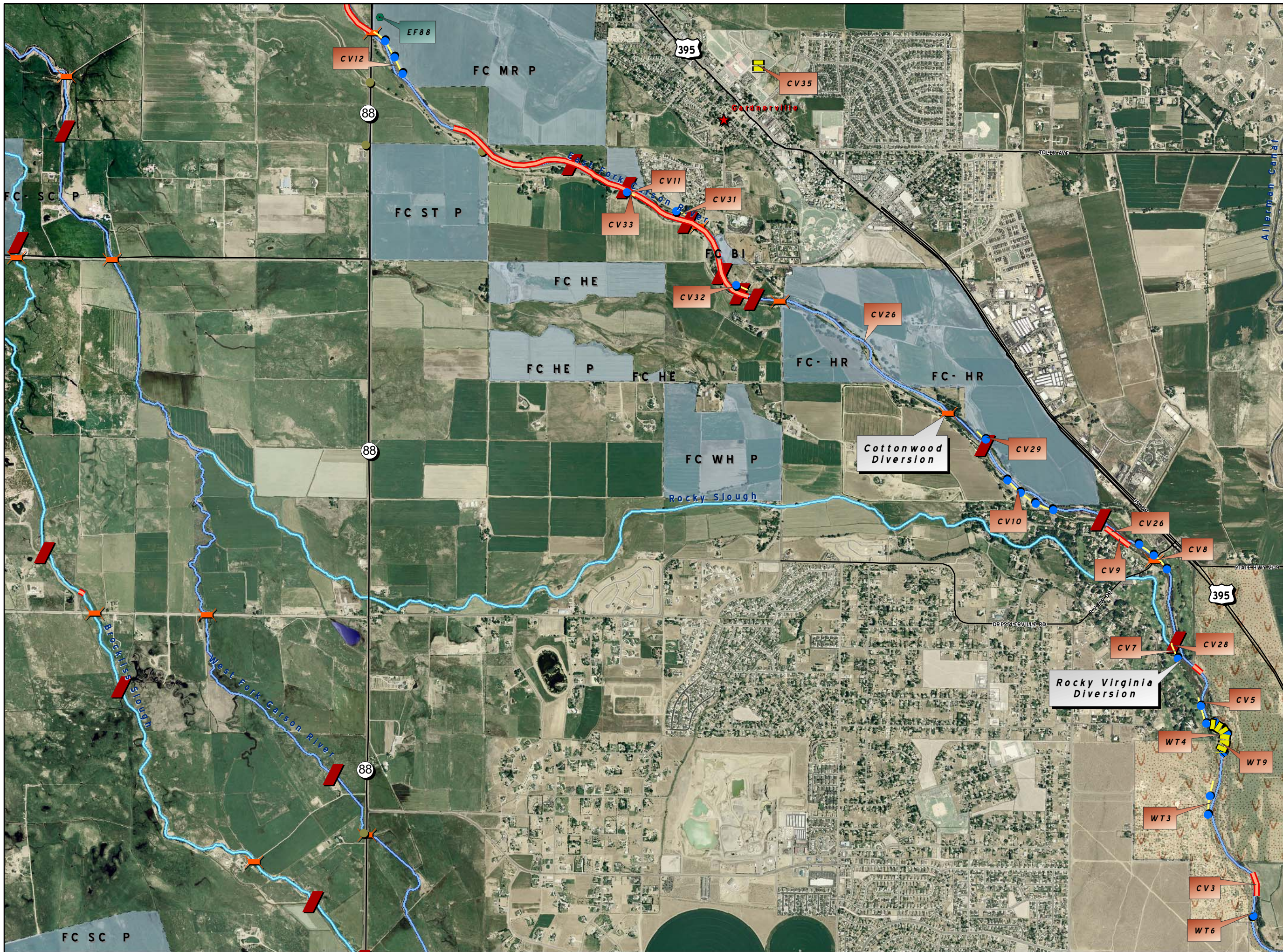
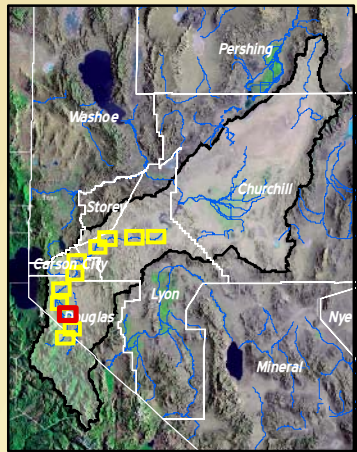


Scale: 1:24,000

0 800 1600 3200 Feet

Map Elements

- ★ Cities
- Carson Monitoring
- USGS Gaging Stations
- ▬ Grade Controls
- Roads
- Flood Protection
- ▬ Habitat Enhancement
- ▬ Rehabilitation
- Water Bodies
- Tribal Lands
- Public Lands
- ▬ County Boundaries
- ▬ Floodplain Conservation Easement



Carson River Projects

Map Series #4

May 2007



Scale: 1:24,000

0 800 1600 3200 Feet

Map Elements



Cities



Carson Monitoring



USGS Gaging Stations



Grade Controls



Roads



Flood Protection



Habitat Enhancement



Rehabilitation



Water Bodies



Tribal Lands



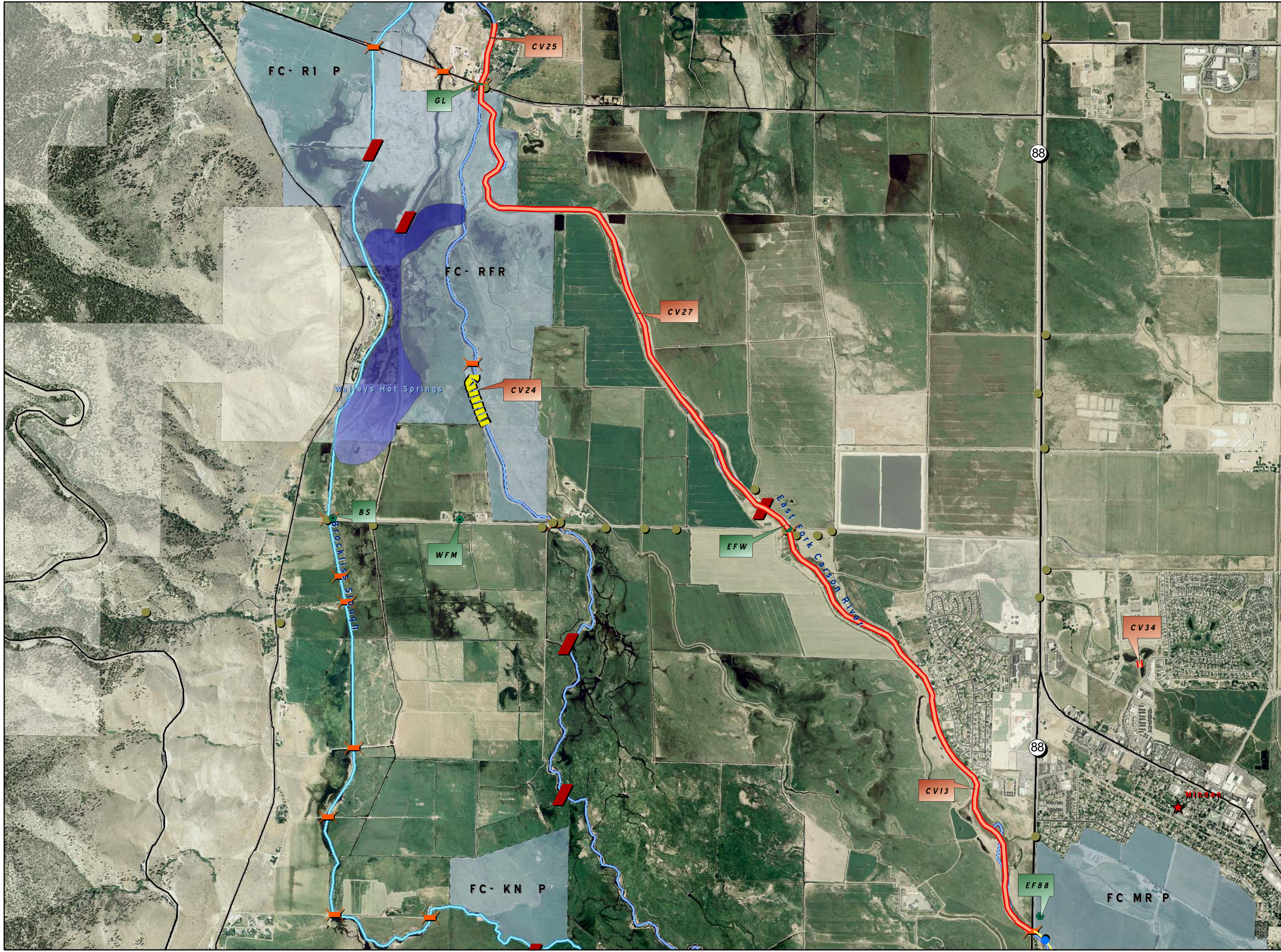
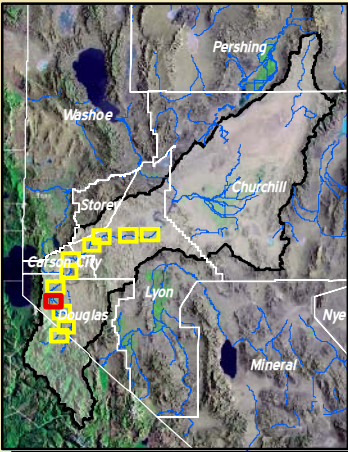
Public Lands



County Boundaries



Floodplain Conservation Easement



Carson River
Projects
Map Series #5
May 2007

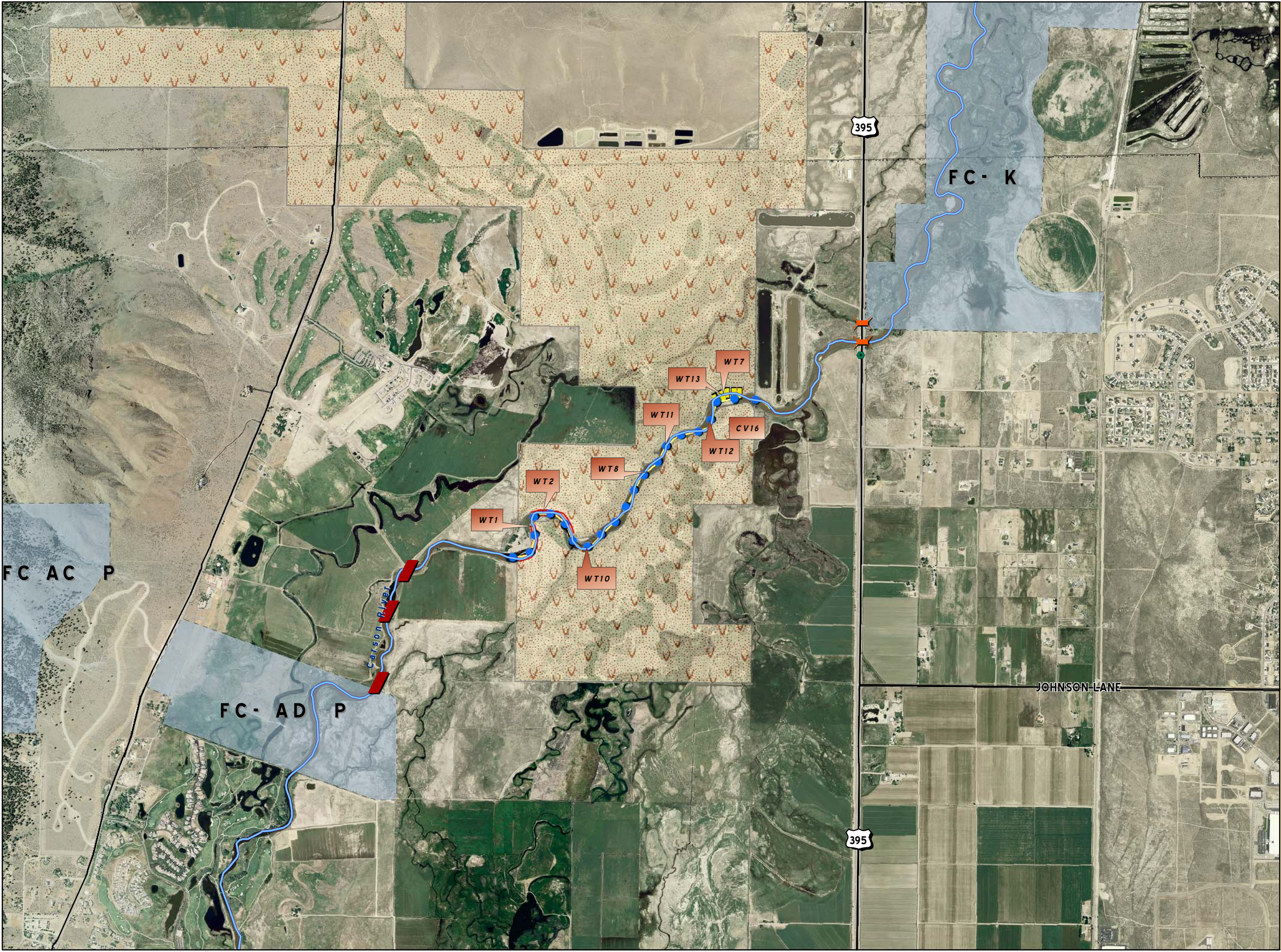
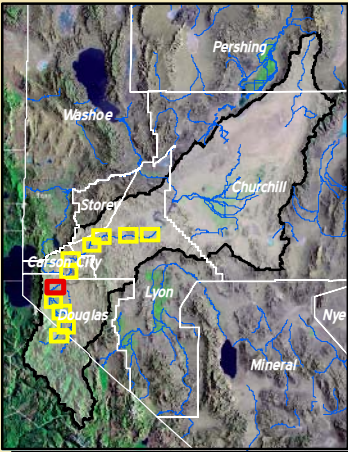


Scale: 1:24,000



Map Elements

- Carson Monitoring
- Bridges
- Grade Controls
- Roads
- Flood Protection
- Habitat Enhancement
- Rehabilitation
- Proposed Projects
- County Boundaries
- Washoe Tribal Lands
- Floodplain Conservation Easement



Carson River Projects

Map Series #6

May 2007

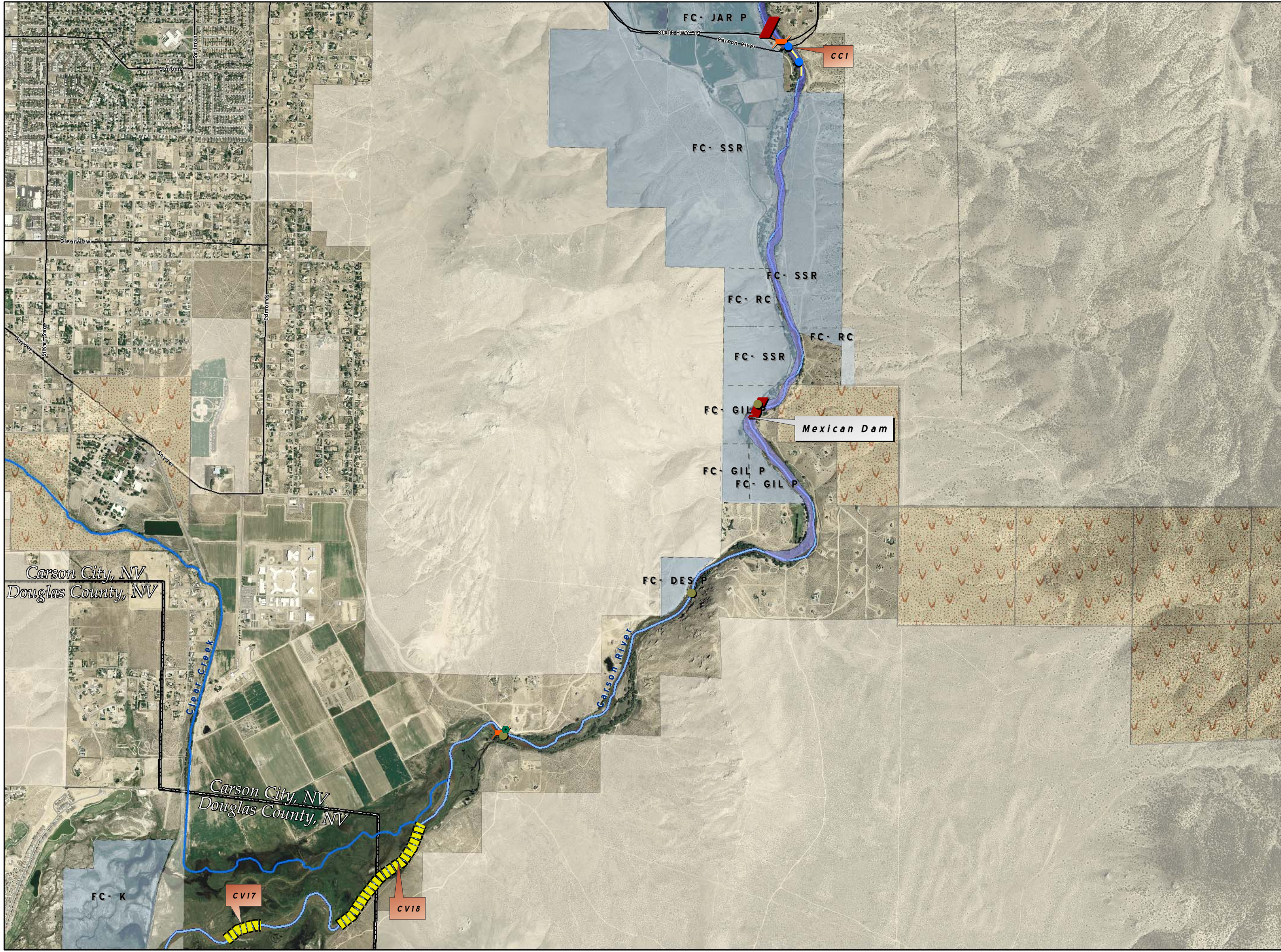
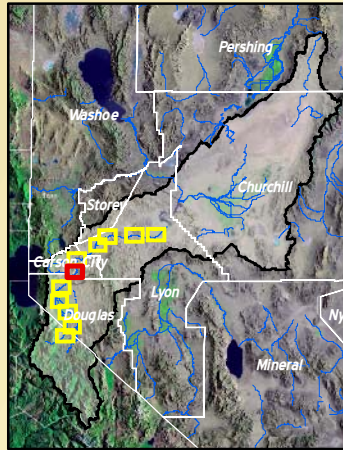


Scale: 1:24,000



Map Elements

- Carson Monitoring
- USGS Gaging Stations
- Grade Controls
- Roads
- Flood Protection
- Habitat Enhancement
- Rehabilitation
- Water Bodies
- Tribal Lands
- Public Lands
- County Boundaries
- Floodplain Conservation Easement



Carson River Projects Map Series #7

May 2007



Scale: 1:24,000

0 800 1600 3200 Feet

Map Elements



Cities



Carson Monitoring



USGS Gaging Stations



Grade Controls

Roads



Flood Protection



Habitat Enhancement



Rehabilitation



Water Bodies



Tribal Lands



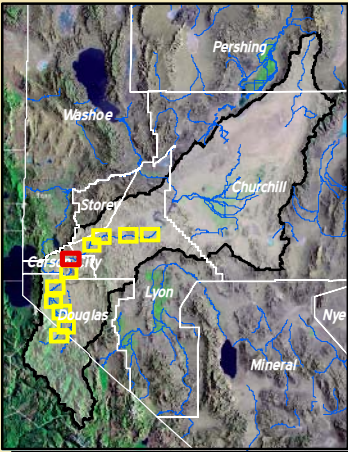
Public Lands



County Boundaries



Floodplain Conservation Easement



Carson River Projects Map Series #8

May 2007

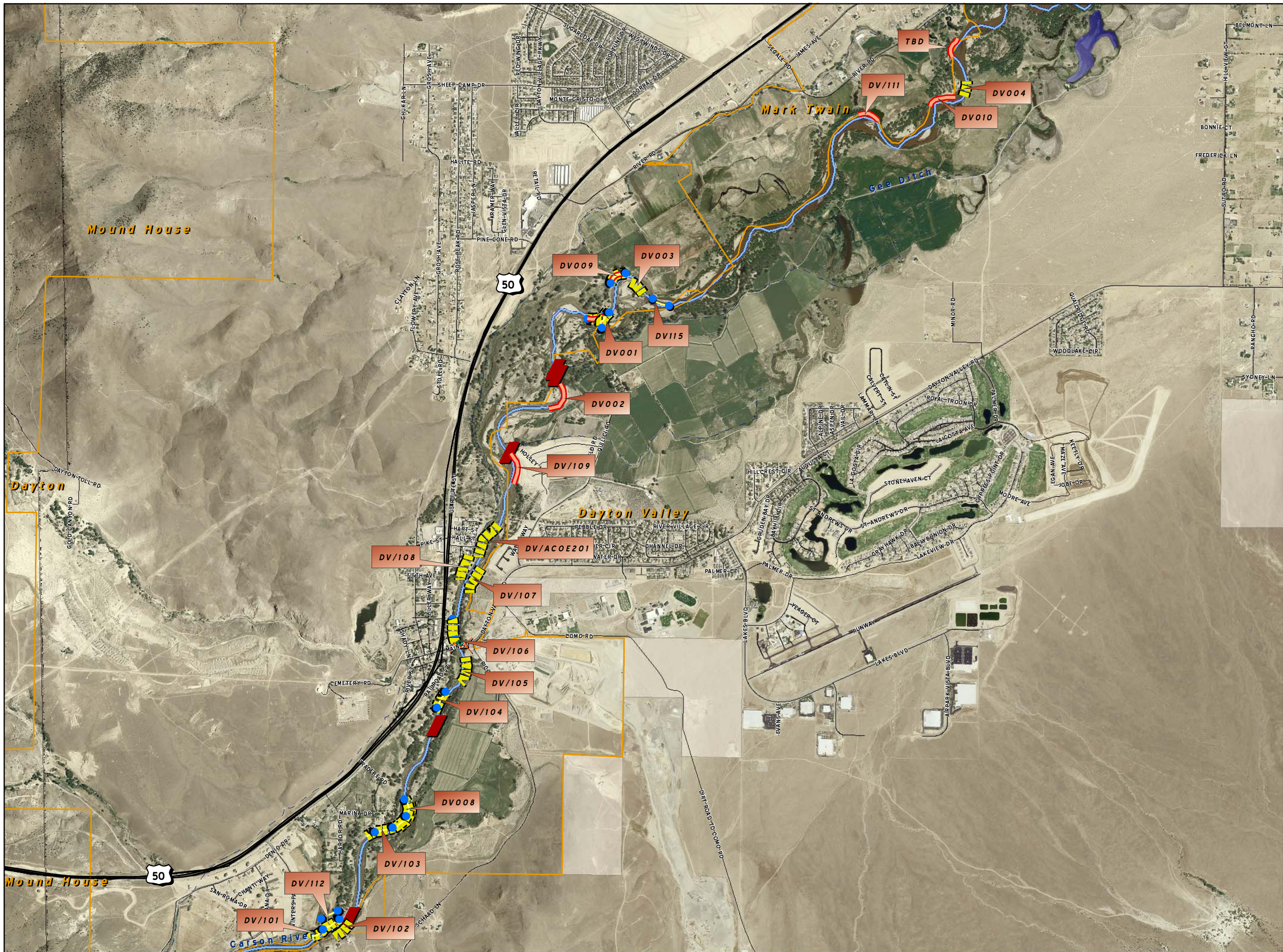
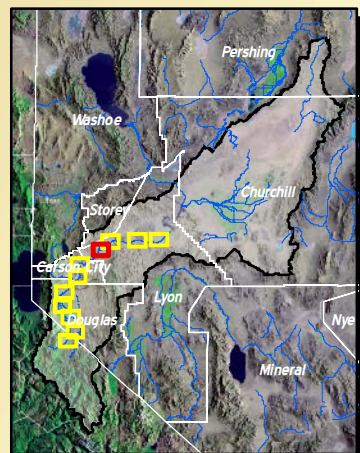


Scale: 1:24,000



Map Elements

- Carson Monitoring
- USGS Gaging Stations
- Grade Controls
- Roads
- Flood Protection
- Habitat Enhancement
- Rehabilitation
- Cities & Towns
- Water Bodies
- Public Lands



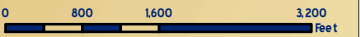
Carson River Projects

Map Series #9

May 2007

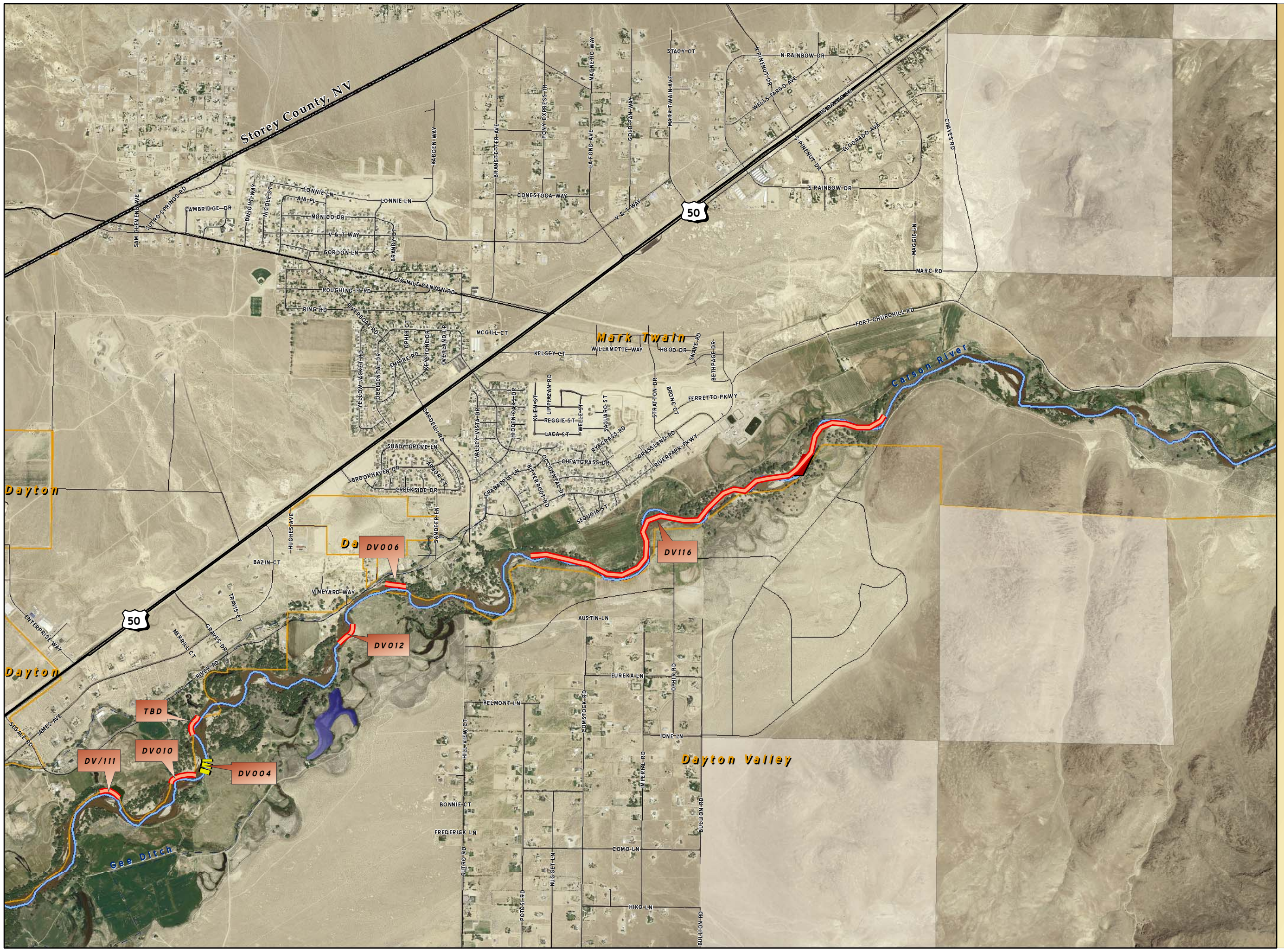
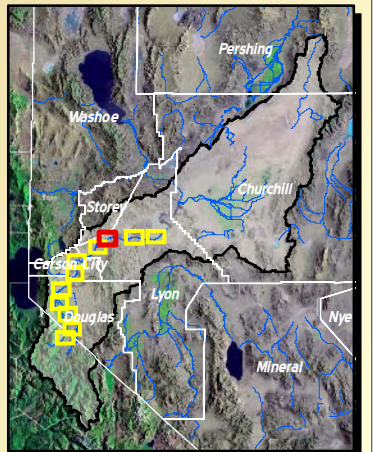


Scale: 1:24,000



Map Elements

- Grade Controls
- Flood Protection
- Habitat Enhancement
- Rehabilitation
- Roads
- Water Bodies
- Public Lands
- NV Counties
- Cities & Towns





**Carson River
Projects
Map Series #10**
May 2007

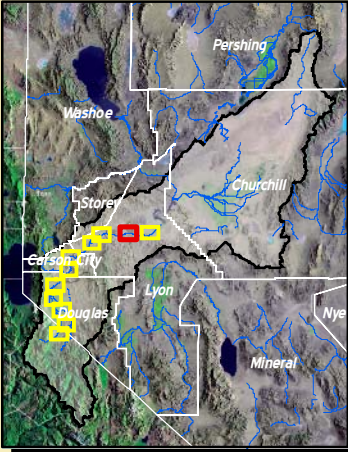


Scale: 1:24,000



Map Elements

- USGS Gaging Stations
- Roads
- Flood Protection
- Habitat Enhancement
- Rehabilitation
- Water Bodies
- Public Lands
- NV Counties
- Cities & Towns



Carson River Projects

Map Series #11

May 2007



Scale: 1:24,000

0 800 1600 3200 Feet

Map Elements

- USGS Gaging Stations
- Carson Monitoring
- Rehabilitation
- Roads
- Water Bodies
- Public Lands
- Cities & Towns

