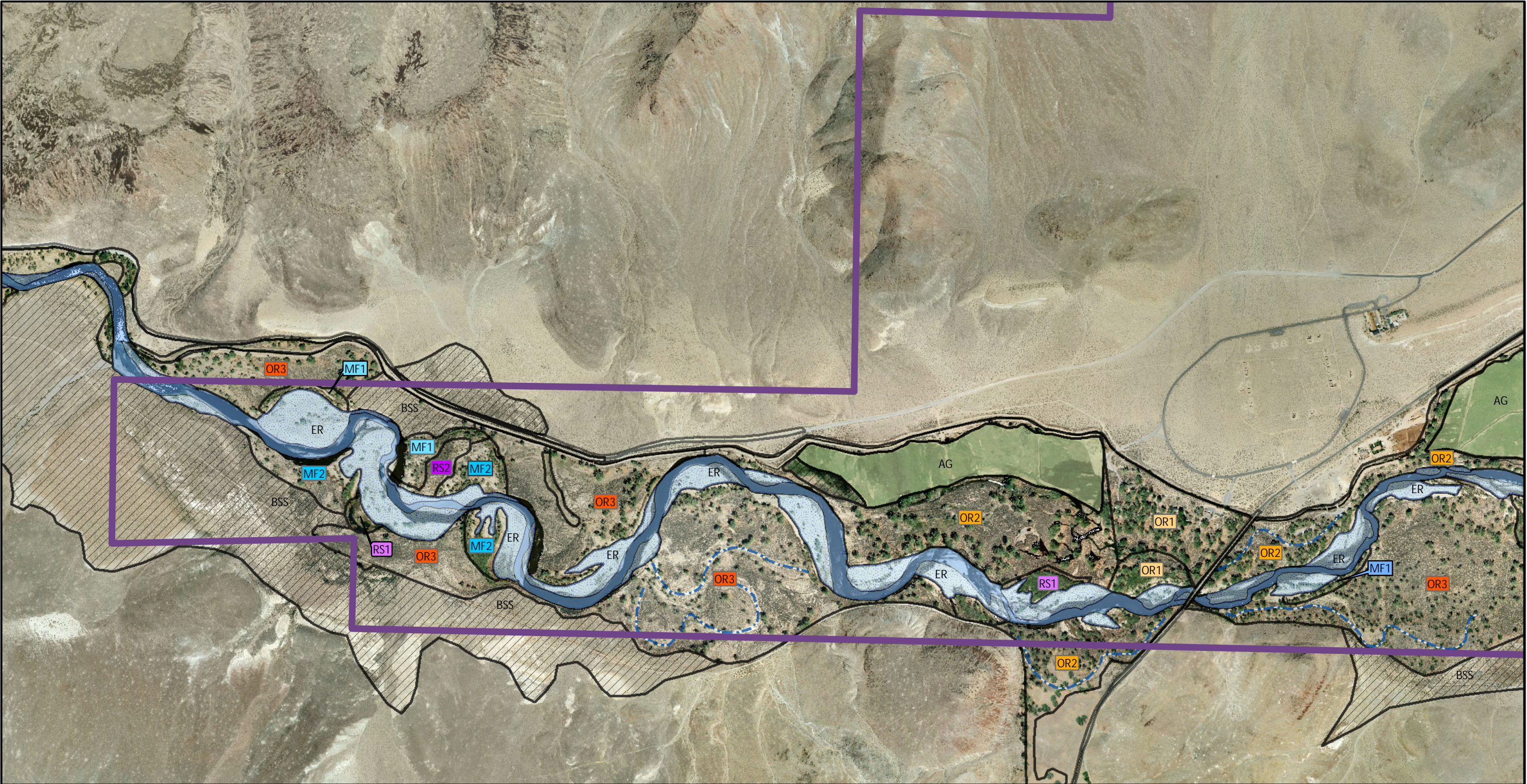




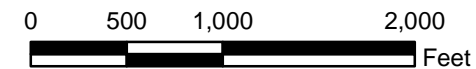
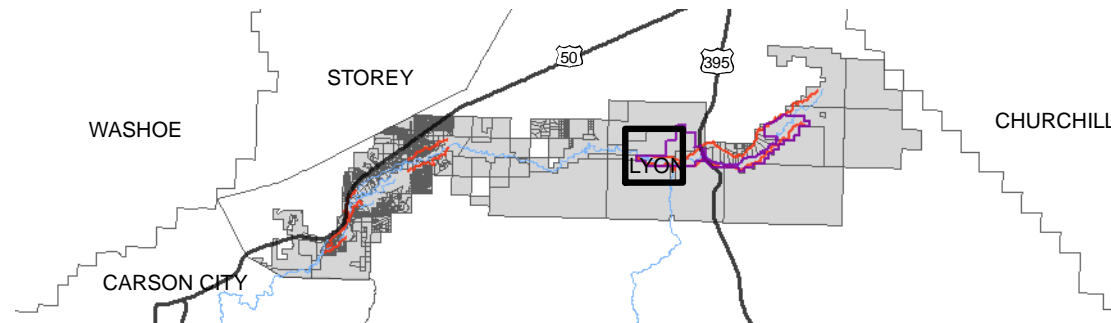
File Path: X:\SHARED\Project\_Files\NV\LC\_Carson\_River\_Action\_Plan\_B.A10254.00\_Mapping\MXD\Habitat\_Conservation\_Plan



BASE MAP: Lyon County, NV 1-Foot 2007


-  FORT CHURCHILL STATE HISTORIC PARK
-  RELICT CHANNEL

See attached legend for habitat type



MIDDLE CARSON RIVER  
HABITAT CONSERVATION PLAN

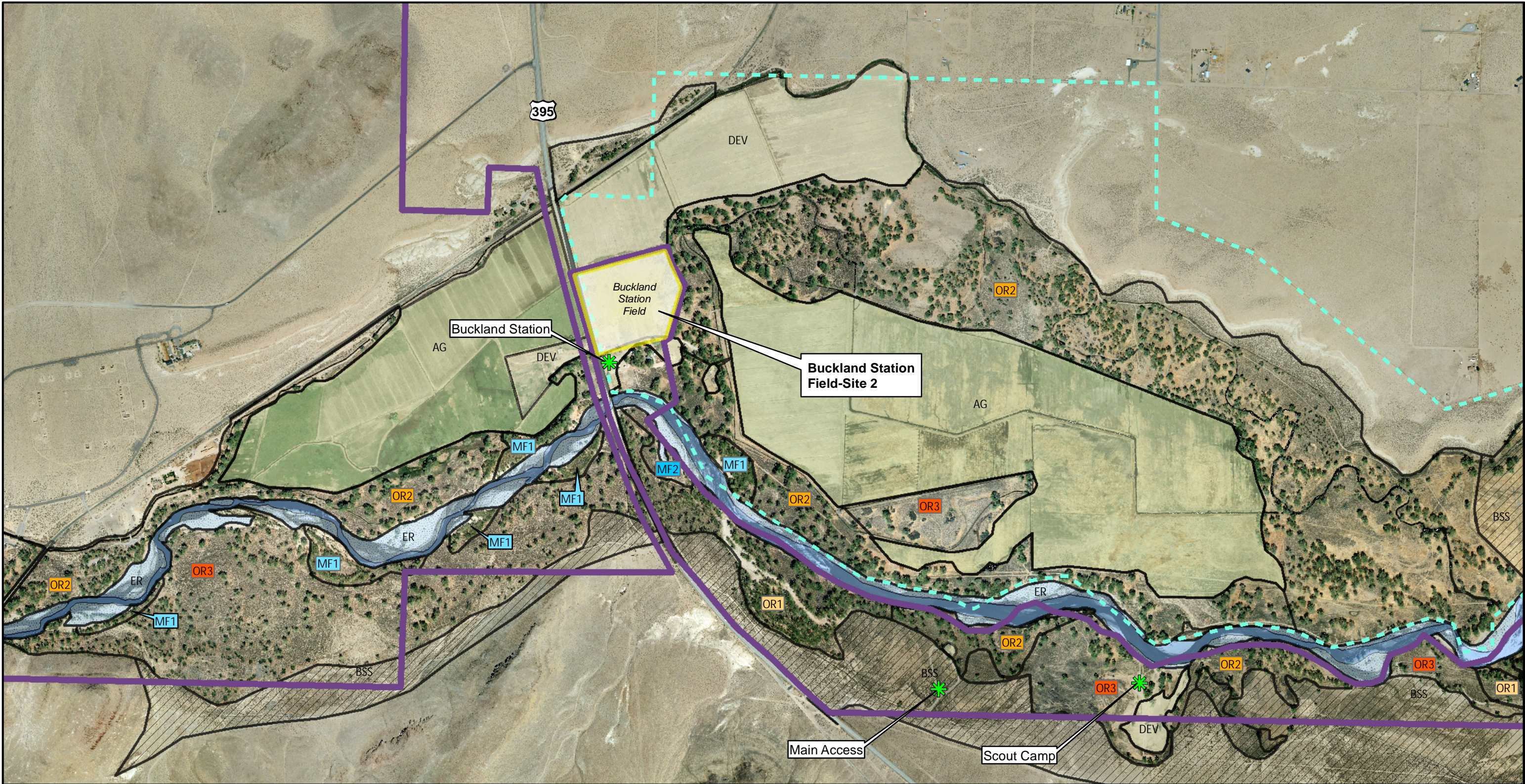
FIGURE 5 FT. CHURCHILL  
STATE HISTORIC PARK (WEST)



DRAWN BY	CHJ	DATE DRAWN	3/9/12
SCALE	1 inch = 1,000 feet		



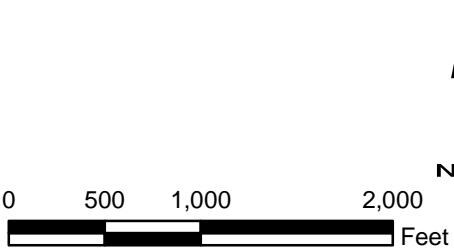
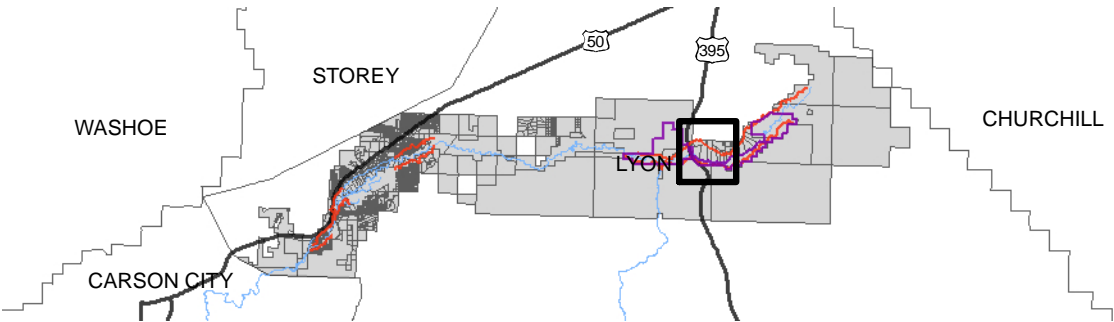
File Path:X:\SHARED\Project\_Files\NVL\_Carson\_River\_Action\_Plan\_B-A10254-00\_Mapping\MXDs\Habitat\_Conservation\_Plan



BASE MAP:Lyon County, NV 1-Foot 2007

 FORT CHURCHILL STATE HISTORIC PARK  
 LAND MANAGED BY STATE PARKS

See attached legend for habitat type



MIDDLE CARSON RIVER  
HABITAT CONSERVATION PLAN

FIGURE 6 FT. CHURCHILL STATE  
HISTORIC PARK AND RIVER RANCHES



DRAWN BY	CHJ	DATE DRAWN	3/9/12
SCALE	1 inch = 1,000 feet		