

# MIDDLE CARSON RIVER HABITAT CONSERVATION PLAN

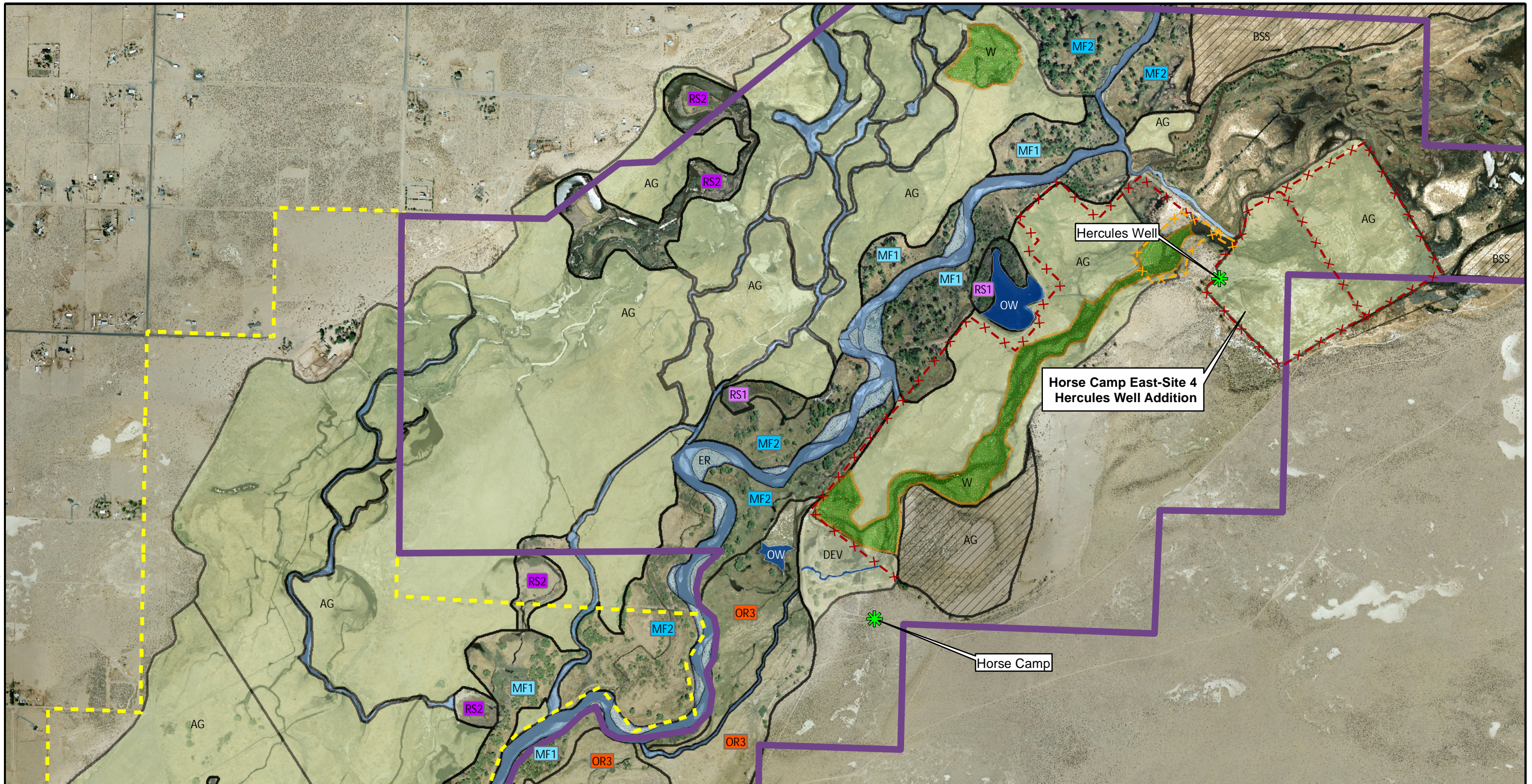
FIGURE 7 FT. CHURCHILL STATE HISTORIC  
PARK (EAST) AND RIVER RANCHES






DRAWN BY  CHJ	DATE DRAWN  3/7/12
SCALE  1 inch = 1,000 feet	



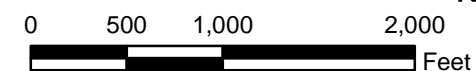
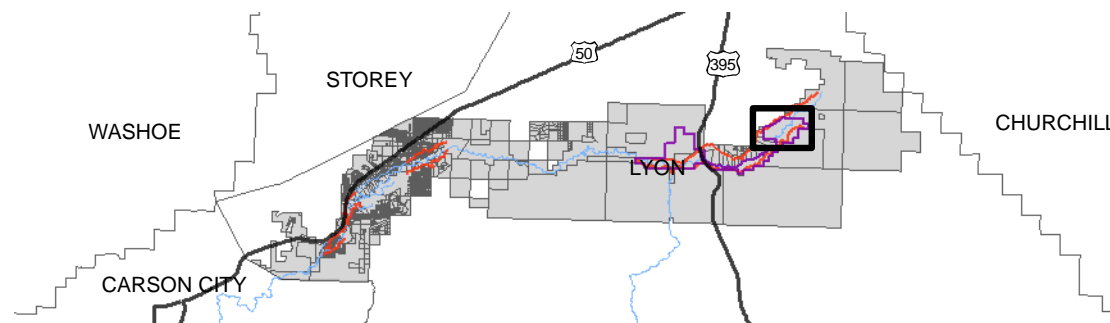
File Path: X:\SHARED\Project\_Files\NVLC\_Carson\_River\_Action\_Plan\_B.A10254.00\_Mapping\MXD\Habitat\_Conservation\_Plan



BASE MAP: Lyon County, NV 1-Foot 2007

-  FORT CHURCHILL STATE HISTORIC PARK
-  LAND MANAGED BY STATE PARKS
-  RELICT CHANNEL

See attached legend for habitat type



## MIDDLE CARSON RIVER HABITAT CONSERVATION PLAN

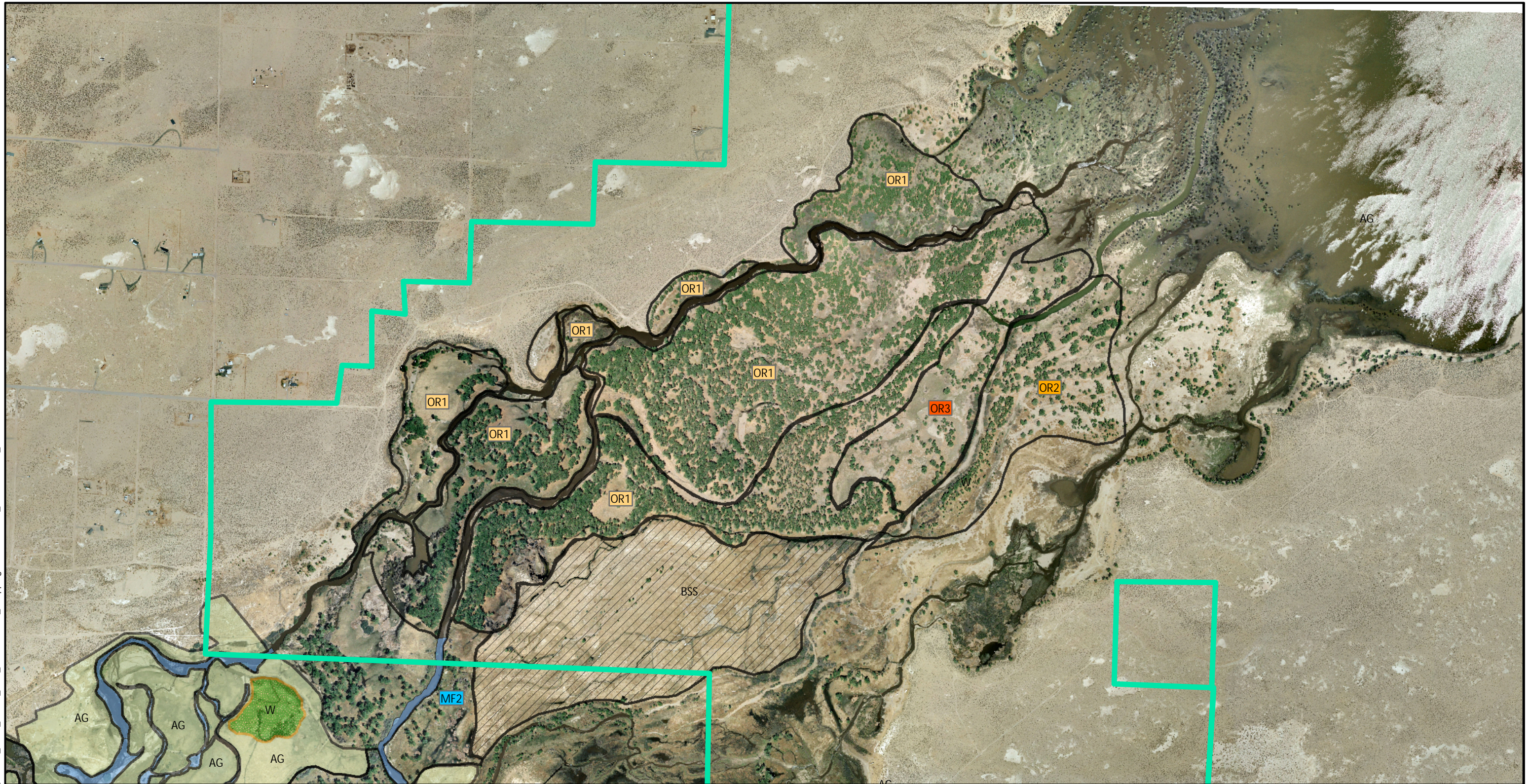
FIGURE 8 FT. CHURCHILL STATE HISTORIC  
PARK (NORTHEAST) AND RIVER RANCHES



DRAWN BY CHJ	DATE DRAWN 3/9/12
SCALE 1 inch = 1,000 feet	



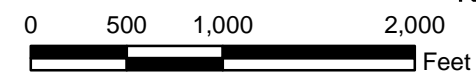
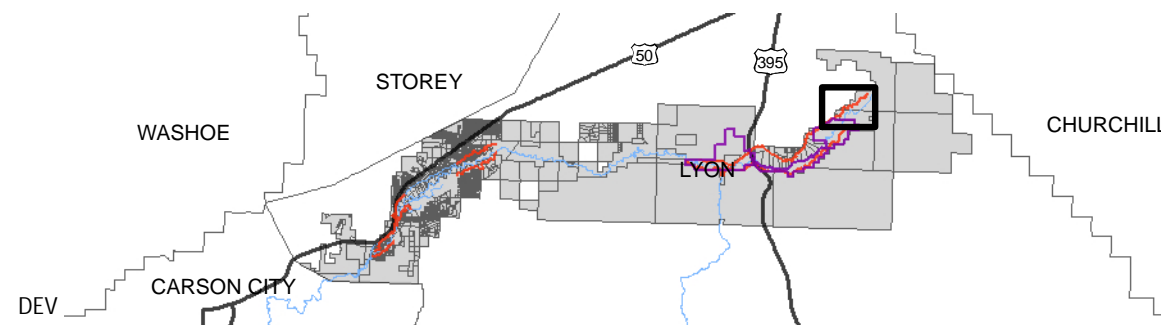
File Path: X:\SHARED\Project\_Files\NVLC\_Carson\_River\_Action\_Plan\_BA10254.00\_Mapping\MXD\Habitat\_Conservation\_Plan



BASE MAP: Lyon County, NV 1-Foot 2007

 LAHONTAN STATE RECREATION AREA

*See attached legend for habitat type*



## MIDDLE CARSON RIVER HABITAT CONSERVATION PLAN

FIGURE 9 LAHONTAN STATE  
RECREATION AREA



DRAWN BY CHJ	DATE DRAWN 3/9/12
SCALE 1 inch = 1,000 feet	