

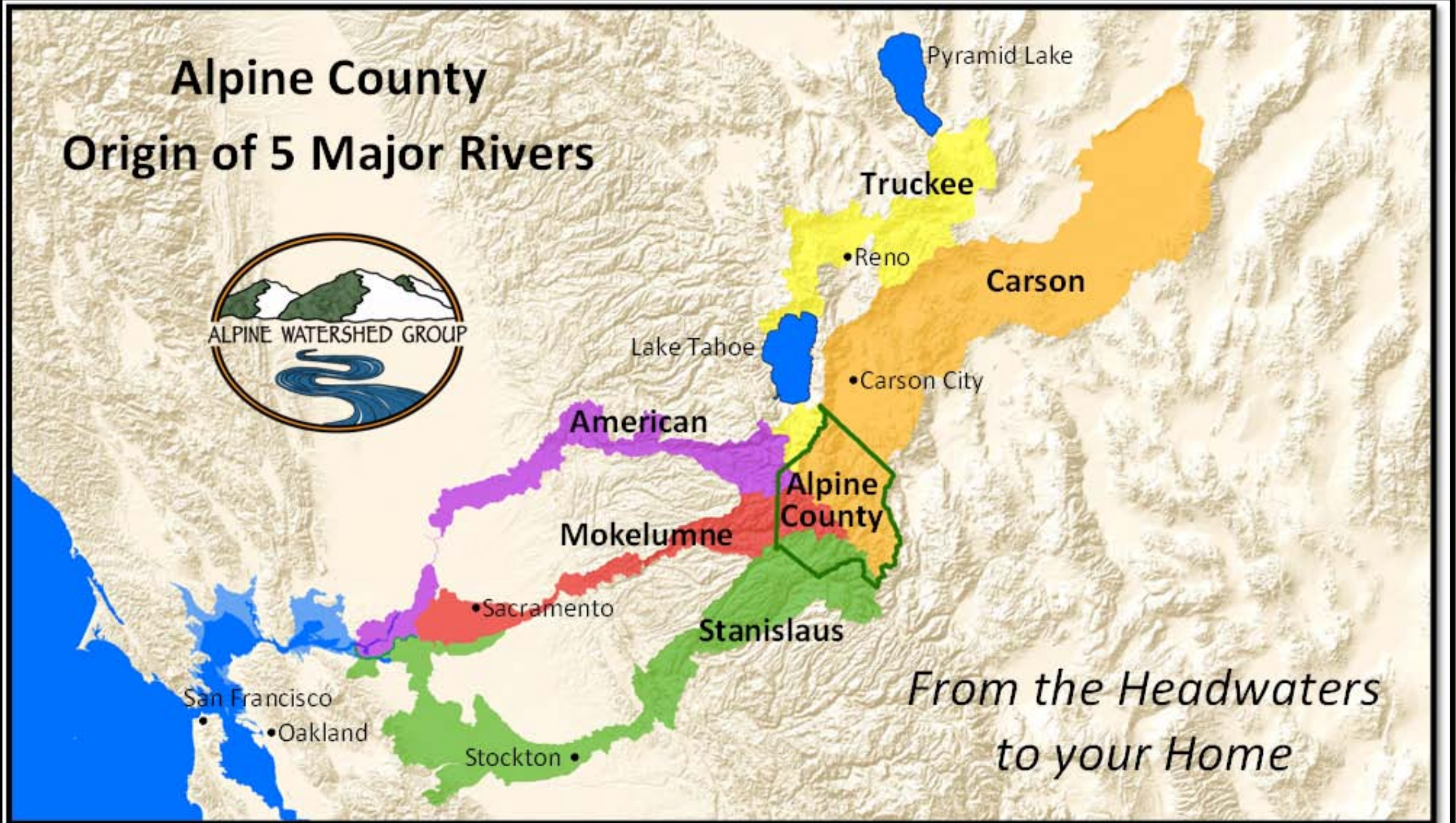


DISCOVER YOUR HEADWATERS



Alpine County

Origin of 5 Major Rivers



*From the Headwaters
to your Home*



Markleeville Creek Acquisition and Stream Restoration Project

Another project funded by Proposition 84
through the California Natural Resources Agency



Project Sponsors

- Alpine County
- Alpine Watershed Group
- Markleeville Public Utility District

Additional funding for this project
has been provided by
the California Department of Conservation,
Carson Water Subconservancy District,
and Sierra Nevada Conservancy.



EDMUND G. BROWN, JR., GOVERNOR
John Laird, Secretary for Natural Resources



Project Partners

- Friends of Hope Valley
- California Department of Fish and Game
- Lahontan Regional Water Quality Control Board
- U.S. Forest Service
- Carson Ranger District
- Washoe Tribe of Nevada and California



Markleeville, CA

89

Alpine State Hwy

Laguna St

Montgomery St

Water St

Google earth



1930s. Building the Wall.



2004. Stormwater
Downstre

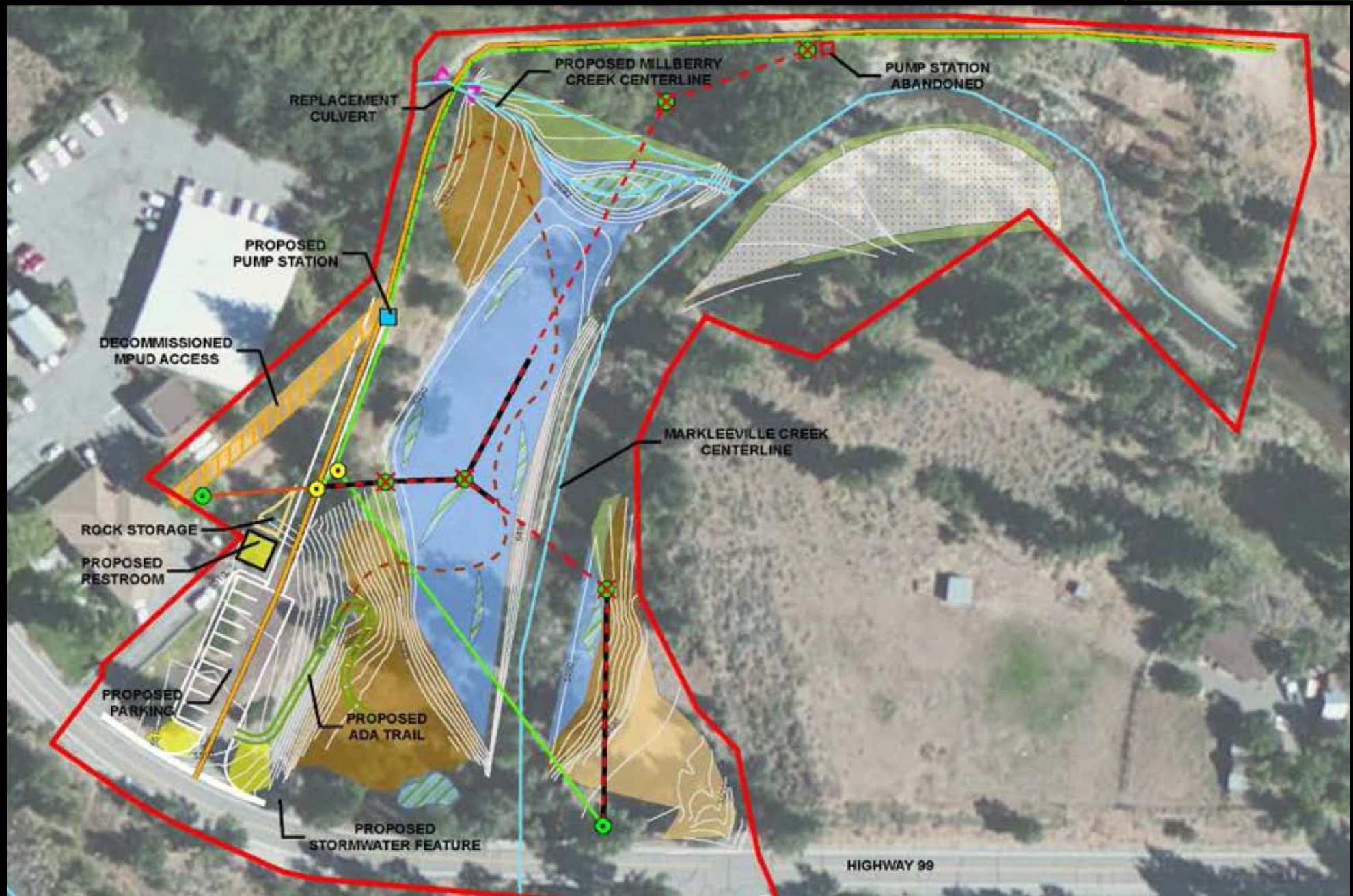
2004. Bend downstream of Gaurd Station
restored following 1997 Flood.



1

1997. Inundated Housing - Guard Station.

d



Phase 1: Markleeville Creek Restoration Project

- Sewer line protection & relocation
- Lift station improvement/ relocation



REPLACEMENT CULVERT

PHASE 2

PUMP STATION ABANDONED

MARKLEEVE CREEK

- 
- Removal of floodwall and fill
- Restore to a functional floodplain
- Re-vegetate and stabilize
- Labels on map: PUMP STATION, COMMISSIONED IPUD ACCESS, MARKLE CREEK, MARKLE CEN.
- The aerial map shows the Markle Creek area with various infrastructure and restoration plans. A red line indicates a boundary or path. A blue square marks the 'PUMP STATION'. A green circle marks a point on the creek. A yellow circle marks a point on the floodplain. A dashed black line outlines the 'functional floodplain'. A solid black line outlines the 'Re-vegetate and stabilize' area. An inset photo shows the Markle Creek area with a dashed black line indicating the 'functional floodplain'.



HIGHWAY 99

Other Phase 2 Benefits: Access and Recreation

- Parking area
- Stream access & paths
- Day use area
- Interpretative waysides



Technical Advisory Committee

Alpine County

Alpine Watershed Group

California Department of Fish and Game

California Trout

Friends of Hope Valley

Lahontan Regional Water Quality Control Board

Markleeville Public Utility District

U.S. Forest Service, Carson Ranger District

U.S. Army Corps of Engineers

Washoe Tribe of Nevada and California

Other Partners

Alpine County Chamber of Commerce

Cal Trans

Carson Water Subconservancy District

Tahoe Sierra IRWM

Alpine Aspen Festival

Alpine Watershed Group



October 10 - 11, 2015
2nd Annual Festival in Hope Valley, CA

Discover Your Headwaters!

www.AspenFest.org



Follow the Alpine Watershed Group on Facebook!

For more information contact us at
alpinewatershed@gmail.com
(530) 694 - 2327



Proudly sponsored by:



ANY QUESTIONS?

Shane Fryer

awg.shane@Gmail.com

(530) 694-2327

