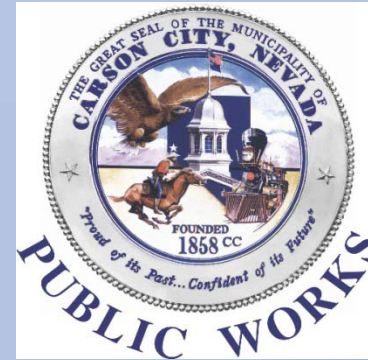
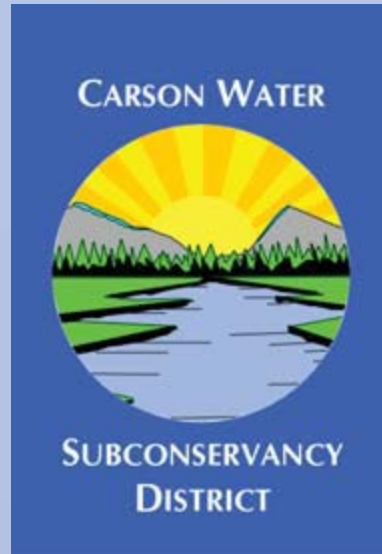


Eagle Valley A & B Drainages Study

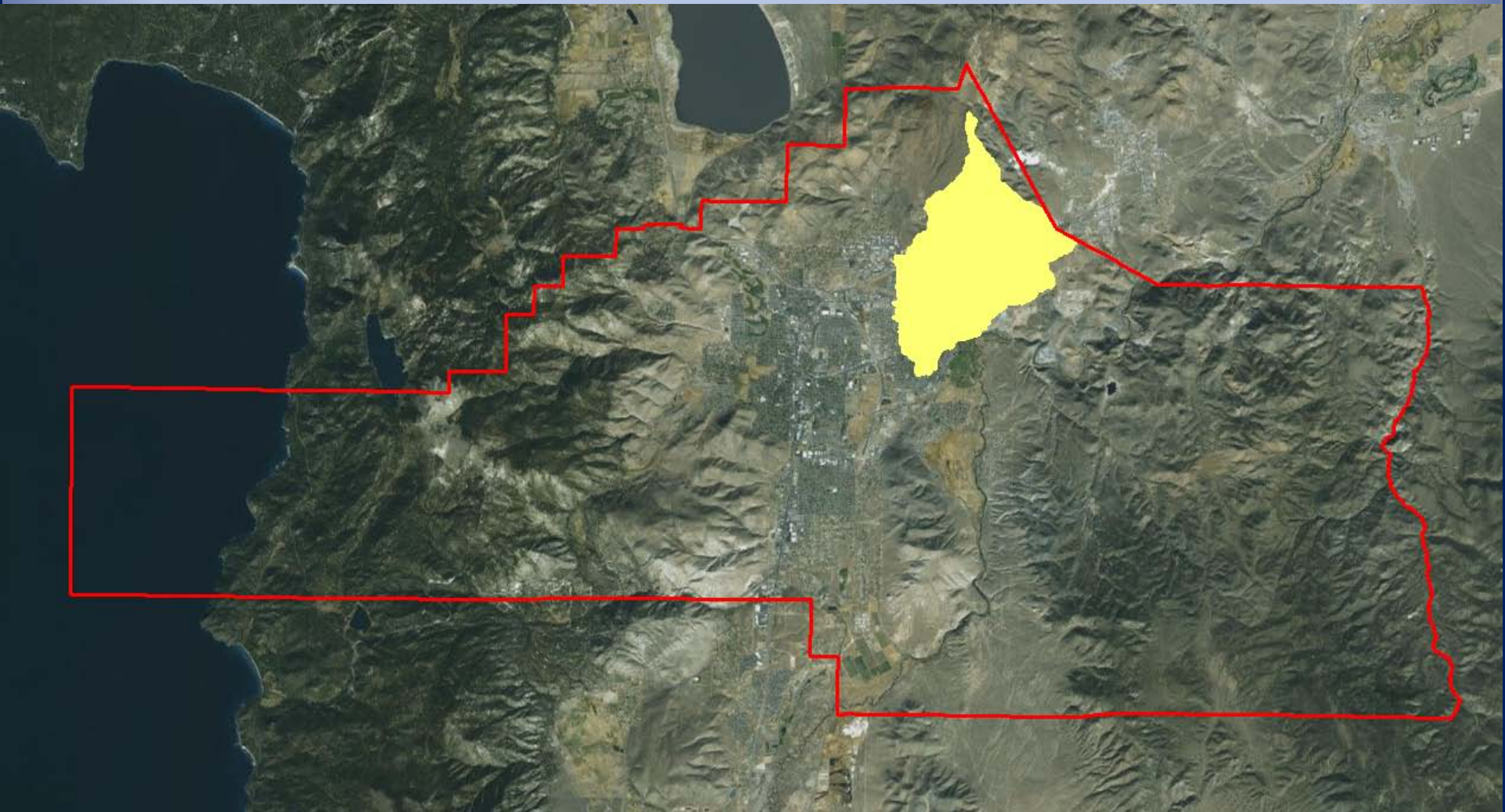


FEMA

Michael Baker
INTERNATIONAL

Where?

Michael Baker
INTERNATIONAL



Where?

Michael Baker
INTERNATIONAL





Why?

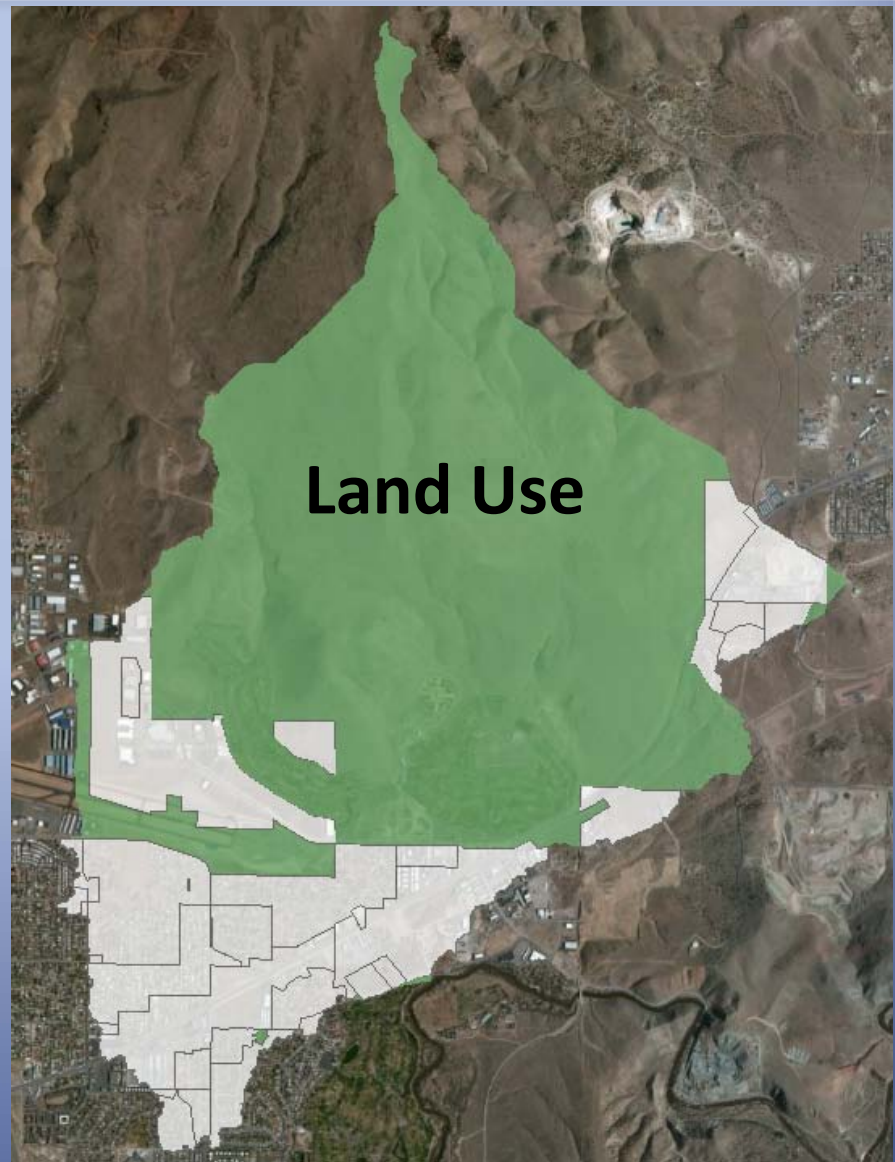
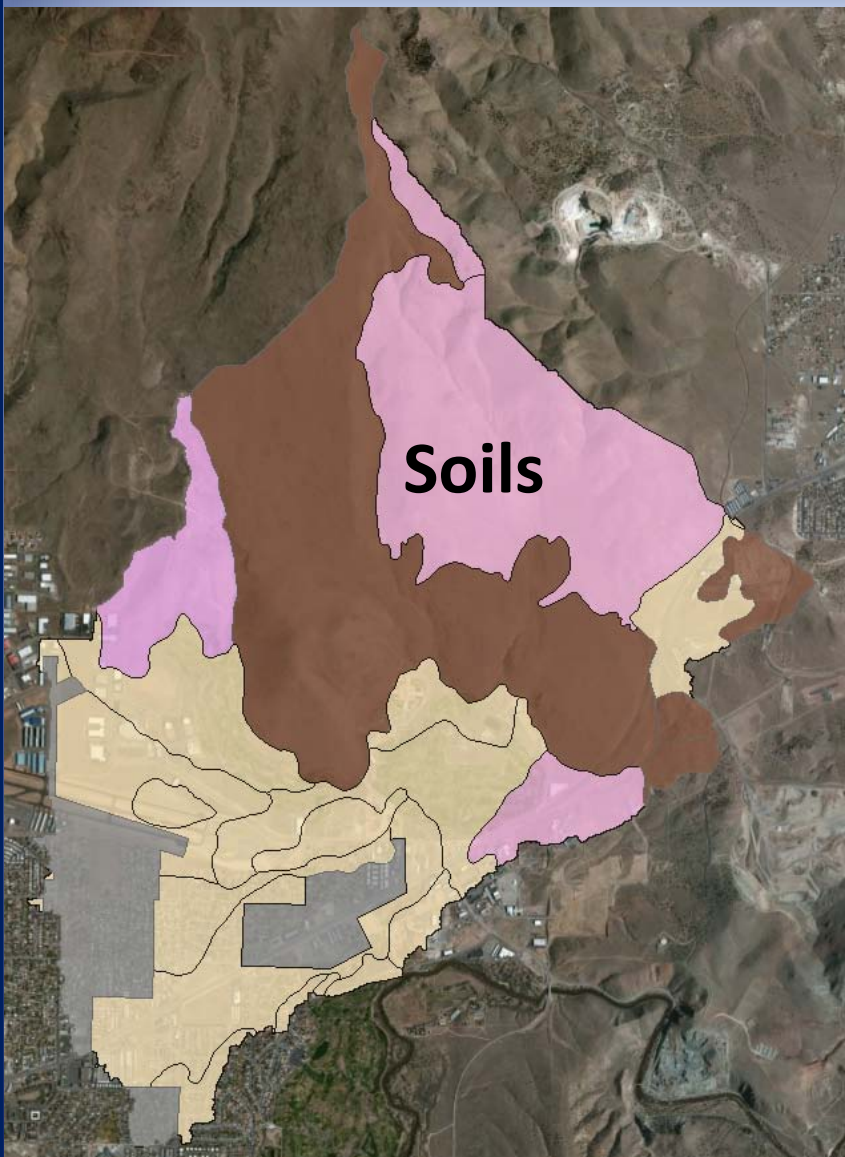
Hydrology

- Watershed - 5 Square Miles @ Hwy 50
- 1%-Annual-Chance Discharge – 1,930 cfs
- 386 cfs/sq mi, 0.6 cfs/acre
- Flood retarding structure on gold course

Hydraulics

- Approximate A Zones
- Structures in Floodplain/Floodway
- Two dimensional flow paths

Why?

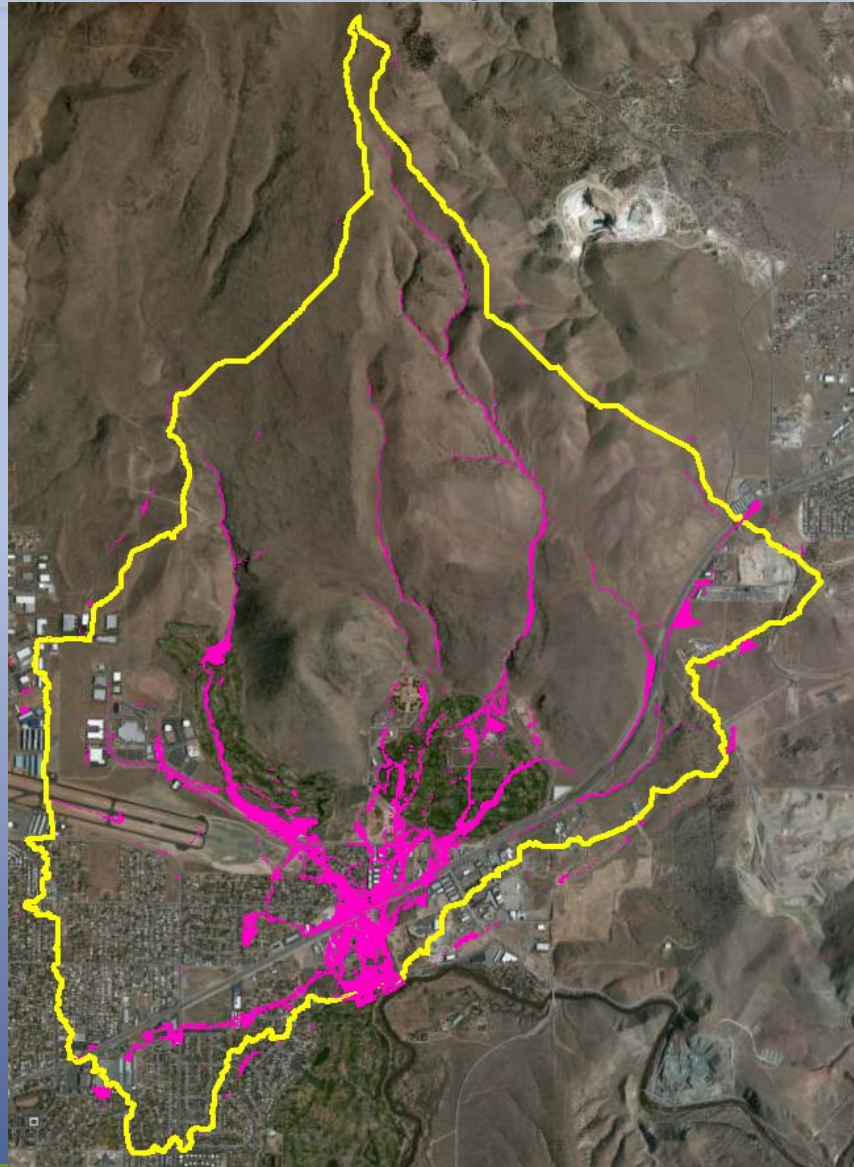


Why?



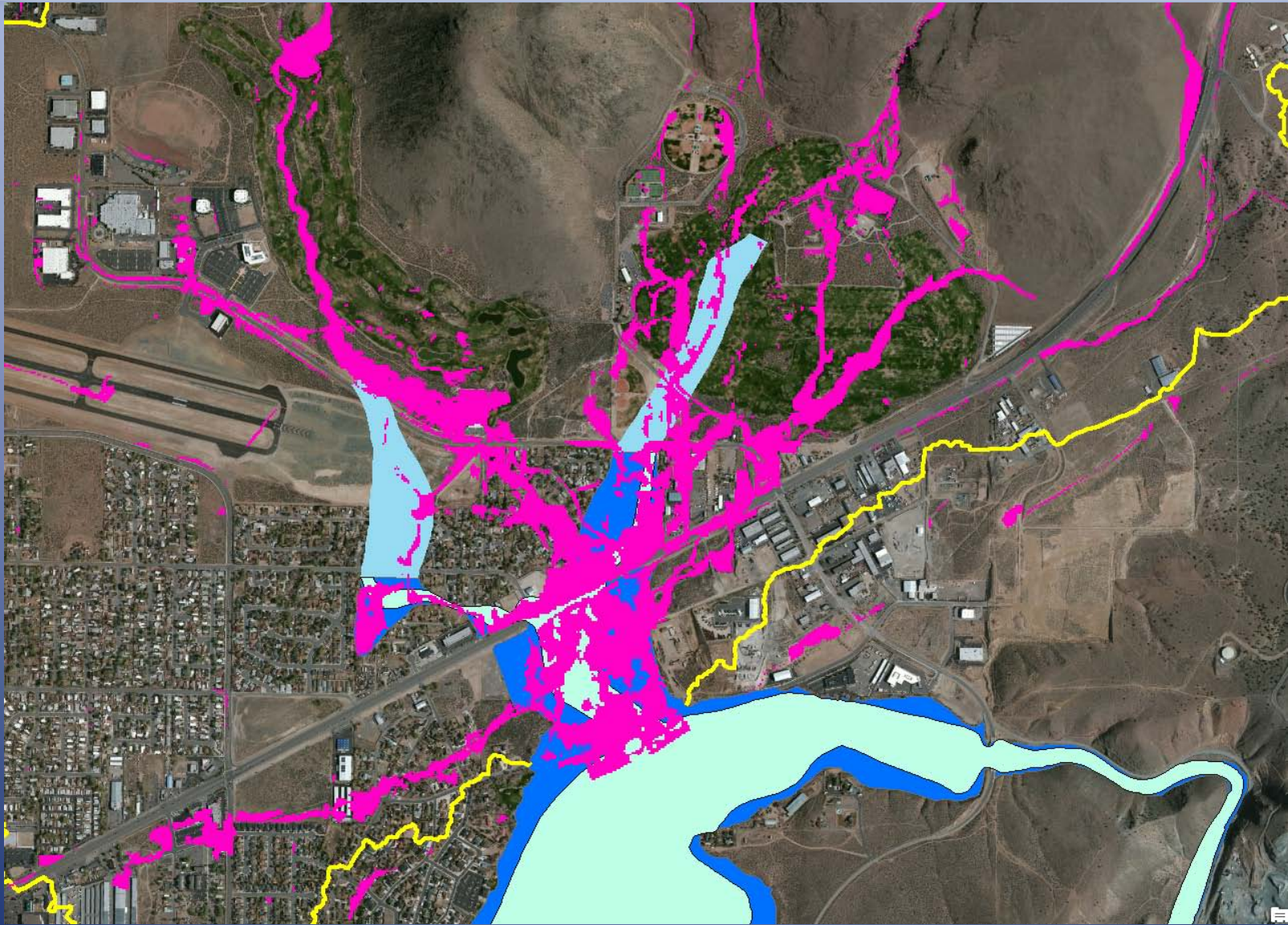


Why?



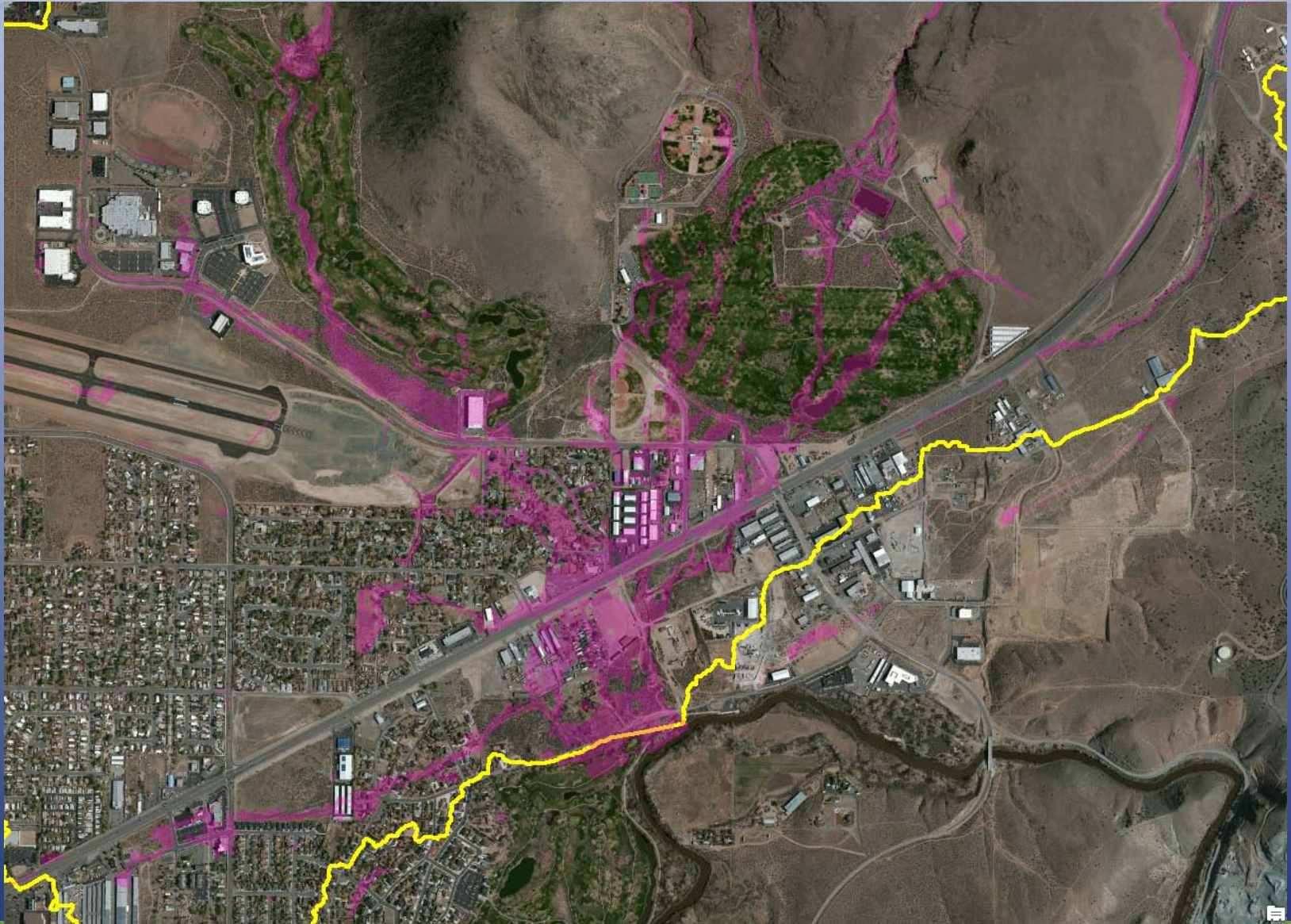


Why?

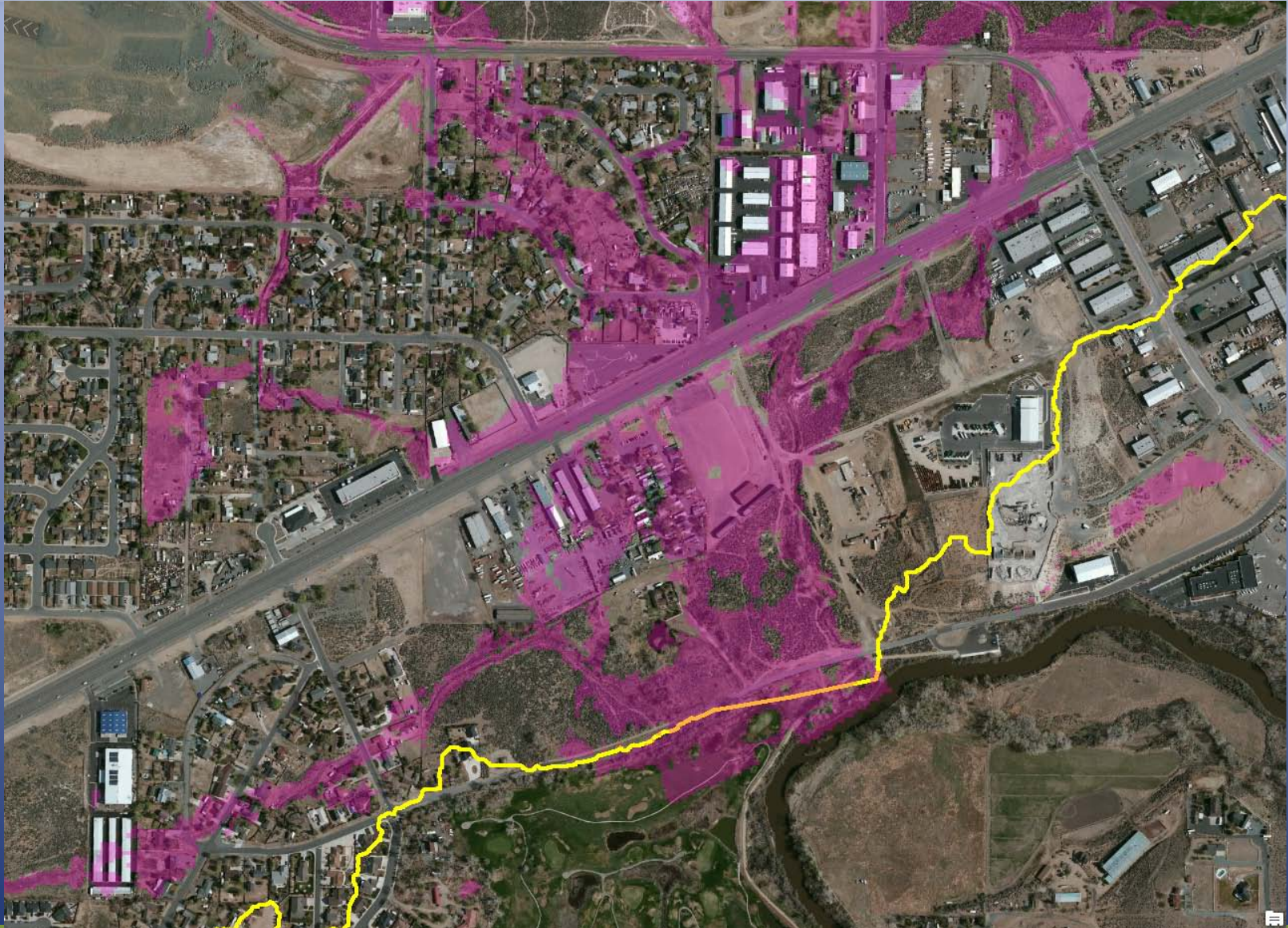


Why?

Michael Baker
INTERNATIONAL



Why?

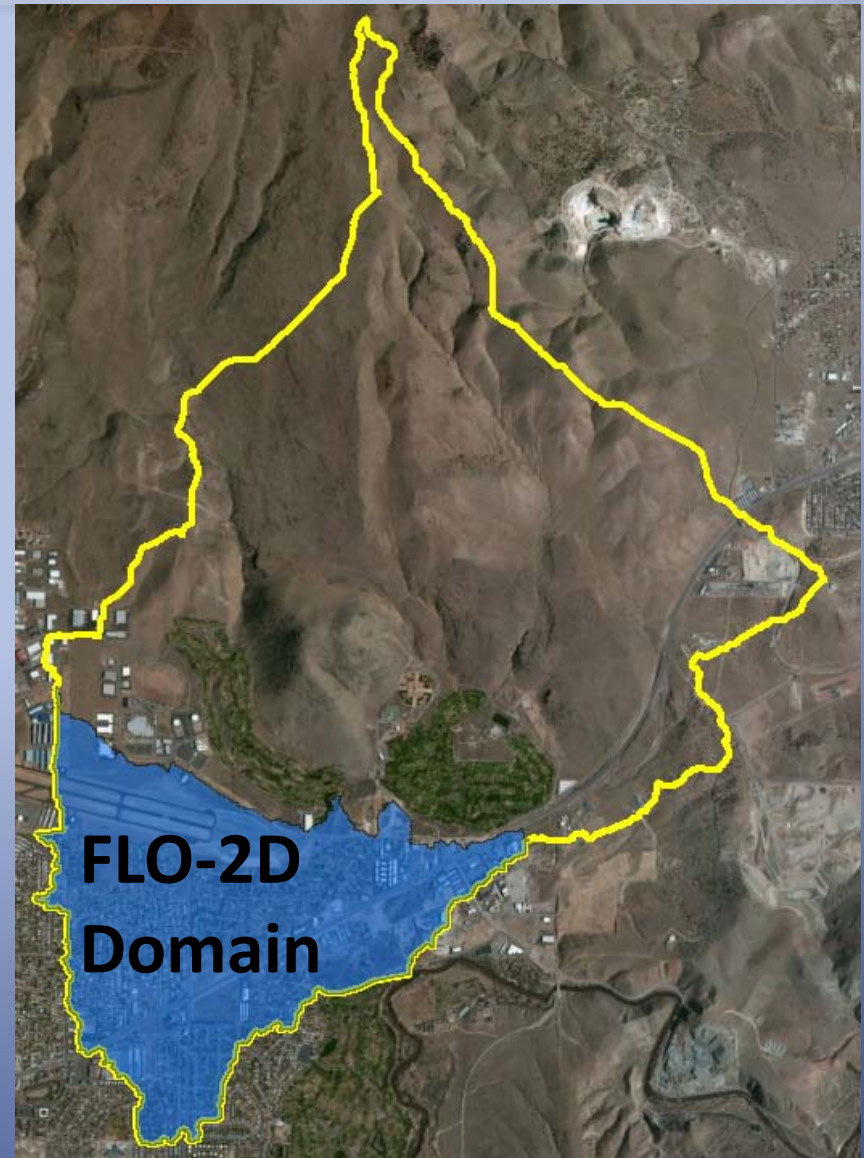
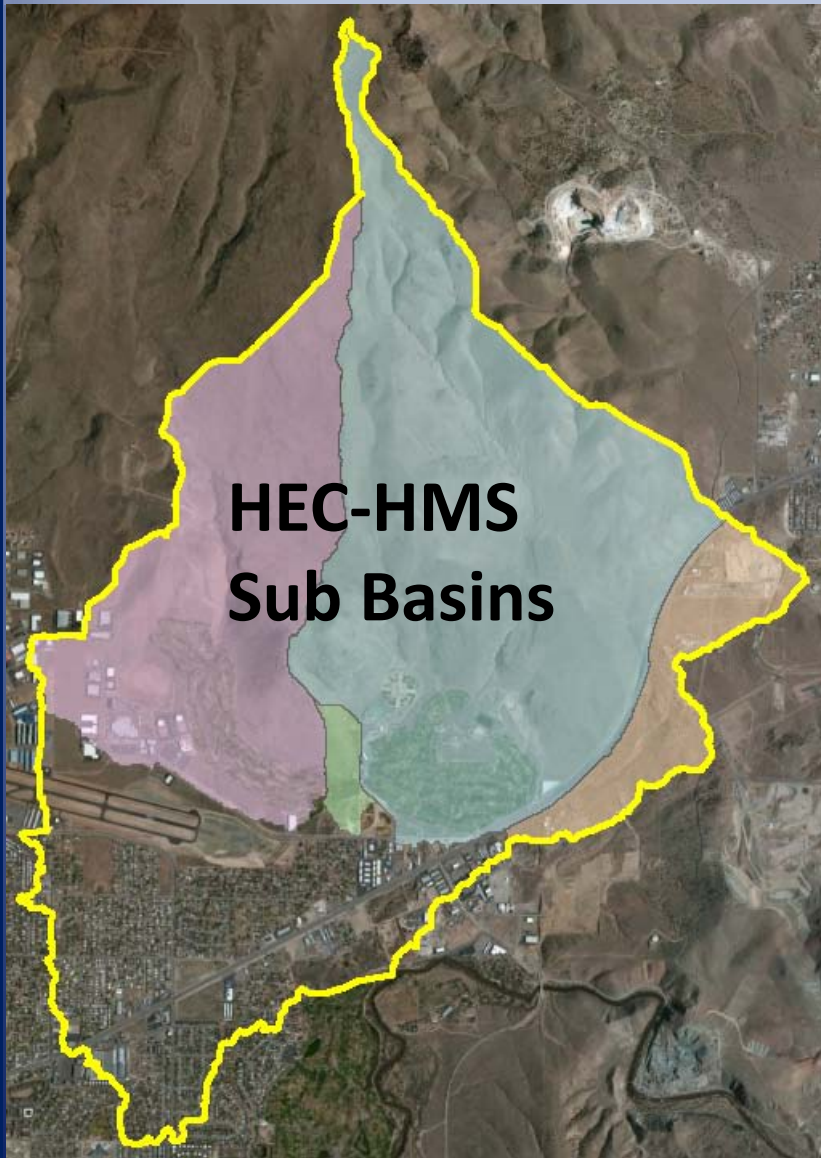




What?

- Revise hydrology upstream of 2D flow areas
- Use 2D model to define Special Flood Hazard Areas
- Create detailed mapping (Zone AE, AO, AH)
- Eliminate floodway
- Submit to FEMA as Letter of Map Revision

How?





How?

LOMR vs PMR

- One FIRM Panel – LOMR
- 2-4 FIRM Panels:
 - Revisions fit on 11x17 or smaller – LOMR
 - Revisions do not fit on 11x17 or smaller – PMR
- >4 FIRM Panels - PMR

How?





When?

- Technical Data Submitted to FEMA – August 2015
- LOMR Effective Date (if not processed as PMR) - ~February 2016
- PMR Effective Date - ???
- Public Outreach (Public Meeting etc.) – August 2015 to LOMR Effective Date or Project End Date (June 2016)

Questions?