



FEMA

Smelter Creek Letter of Map Revision

February 2022

Kimley»Horn

Project Partners

- FEMA – CTP Funding
- Carson Water Subconservancy District – CTP
(Project Administrator)
- Douglas County – Project Owner
- Kimley-Horn – Engineering Consultant

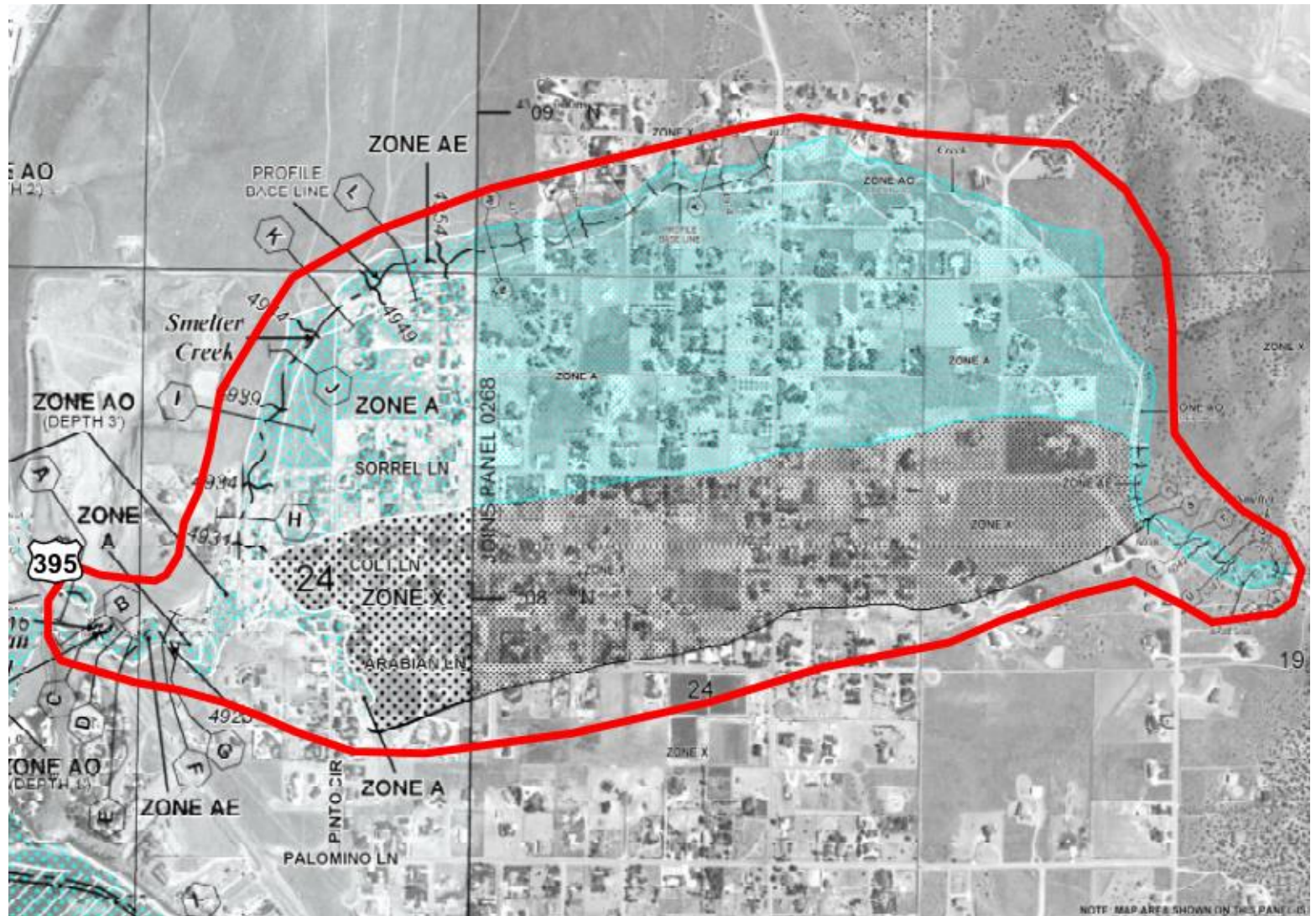
Project L



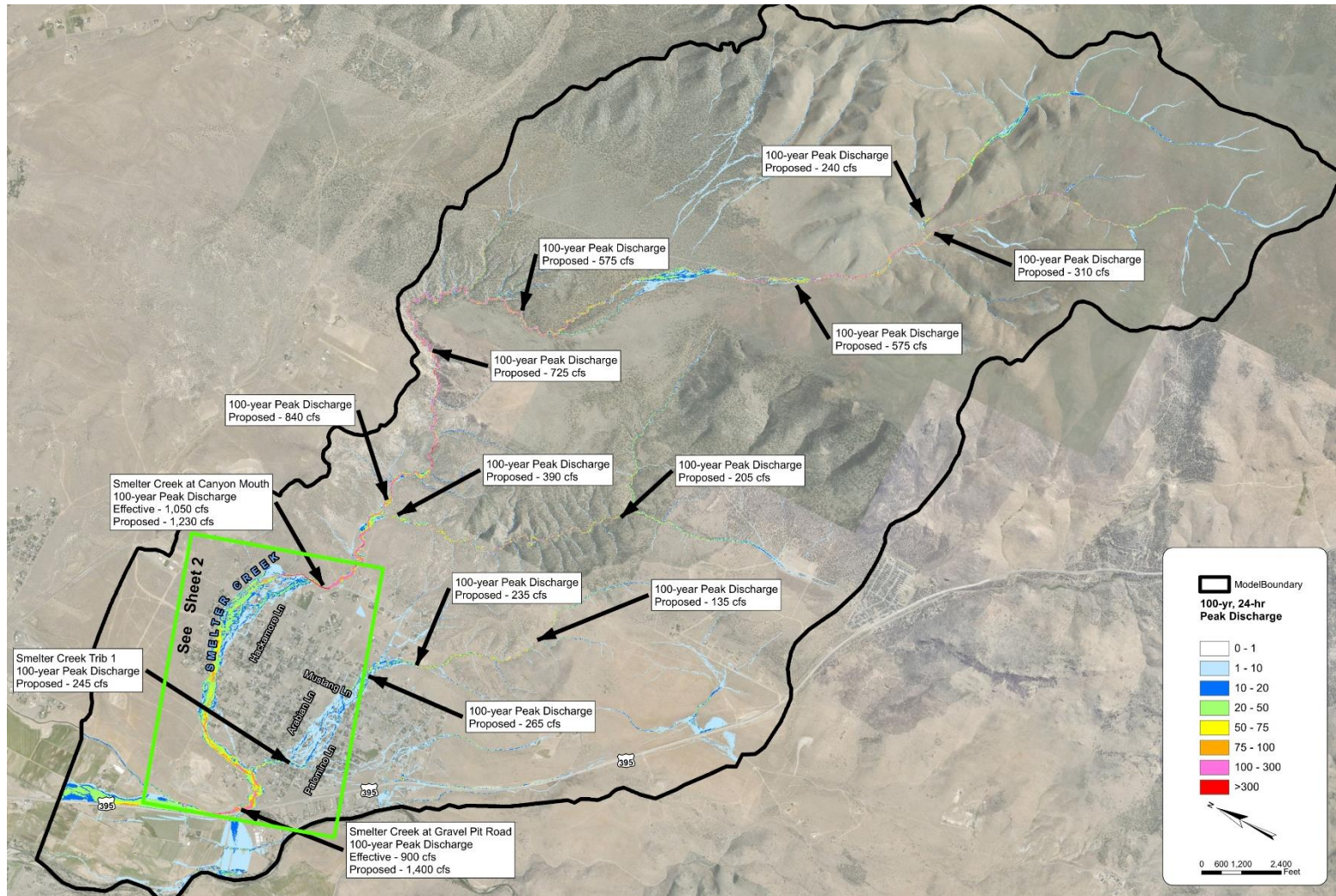
Project Goals

- Build on hydrologic modeling completed for Ruhenstroth Area Drainage Master Plan
- Complete more accurate floodplain mapping using two-dimensional hydrology and hydraulics
- Submit to FEMA as a LOMR

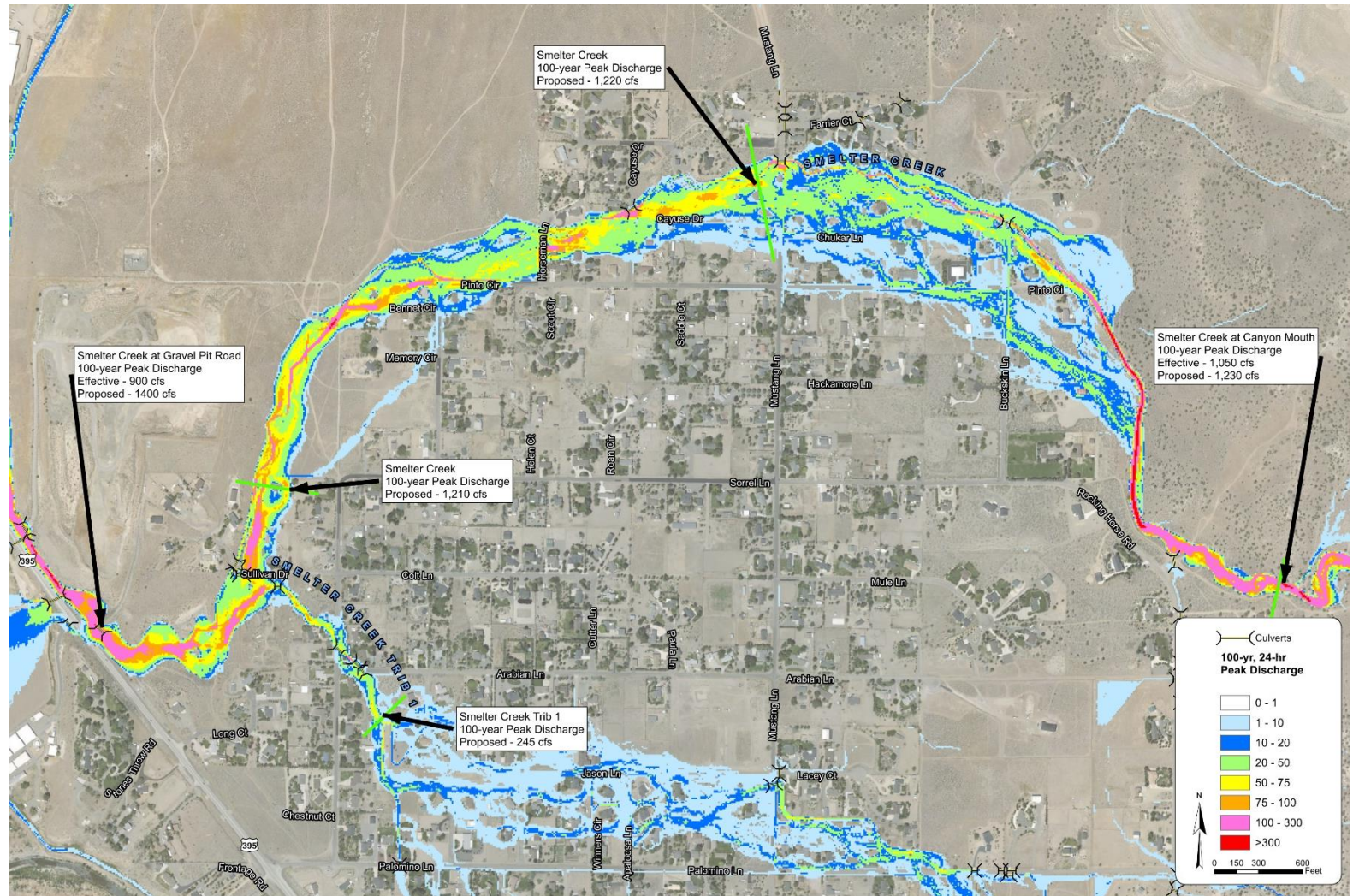
Effective FEMA Floodplains



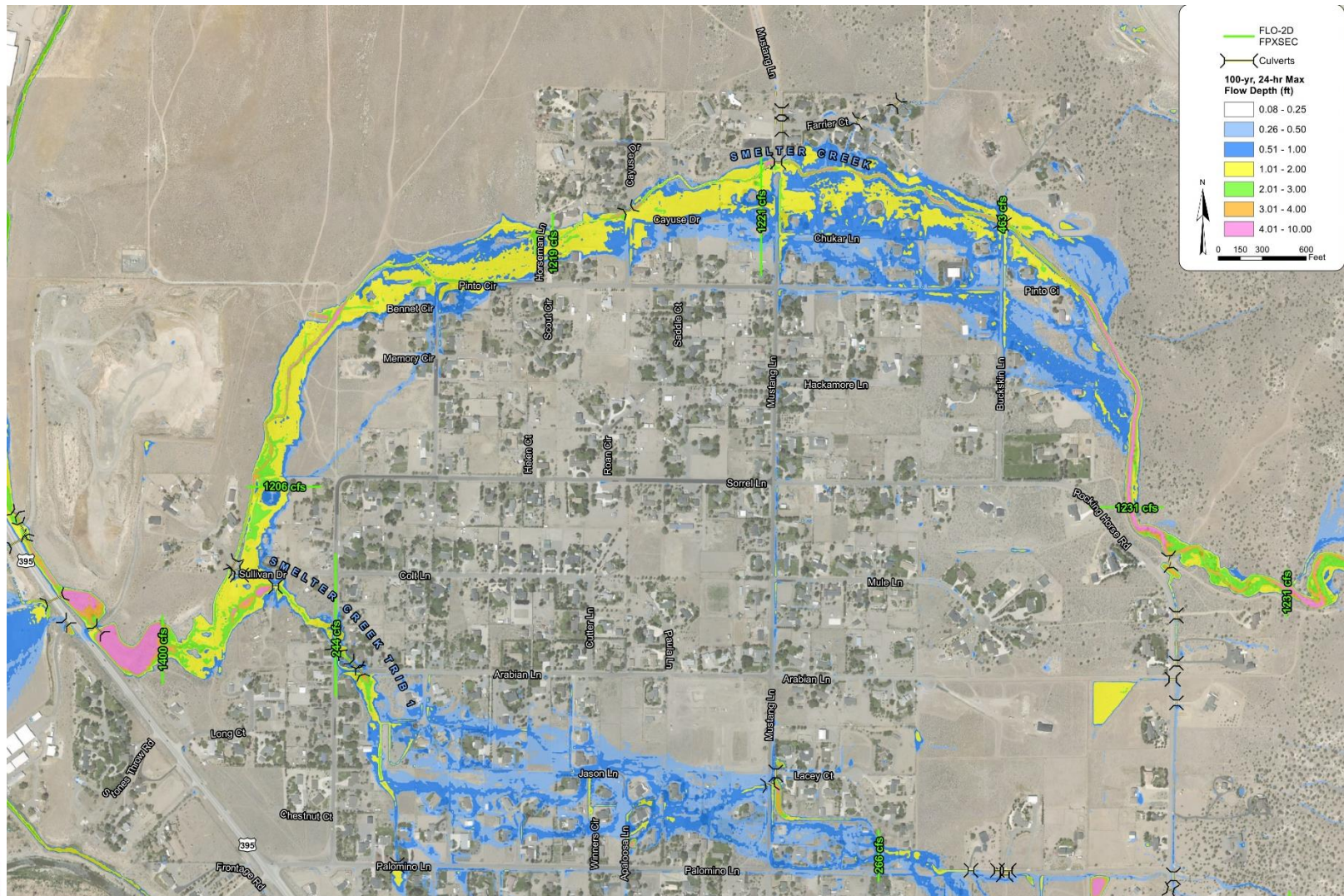
Hydrologic Results



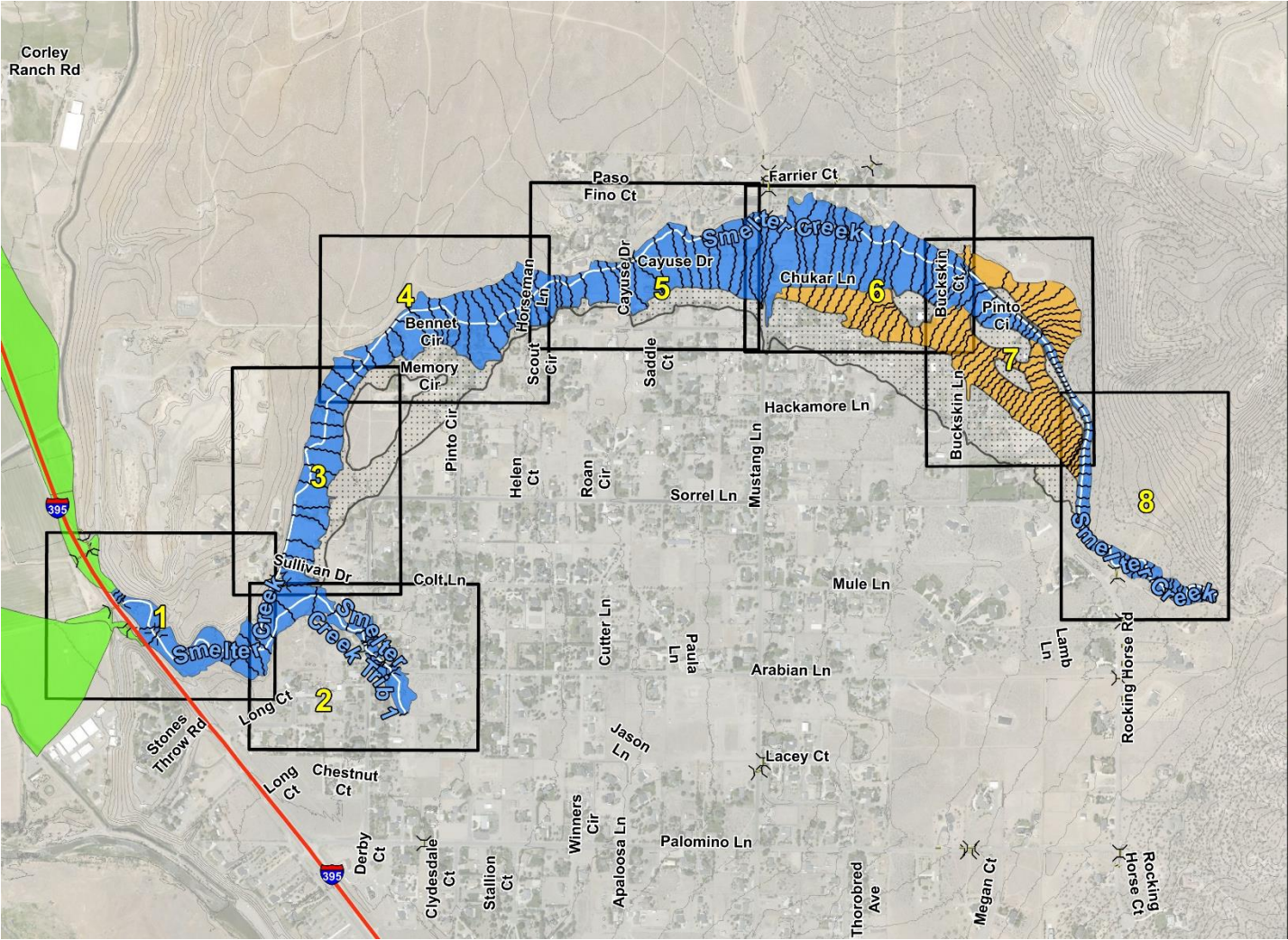
Hydrologic Results



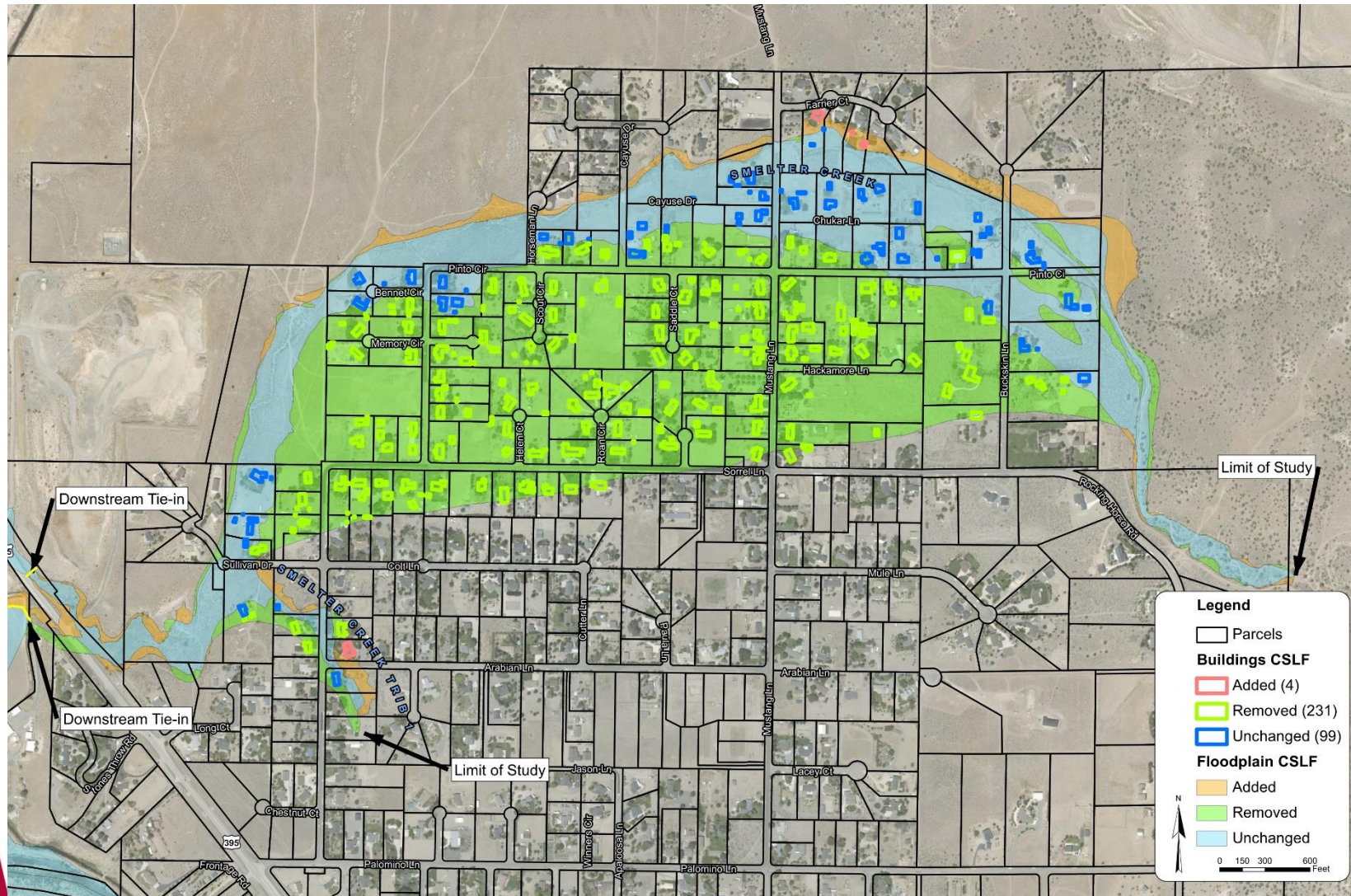
New 100-year Flood Depths



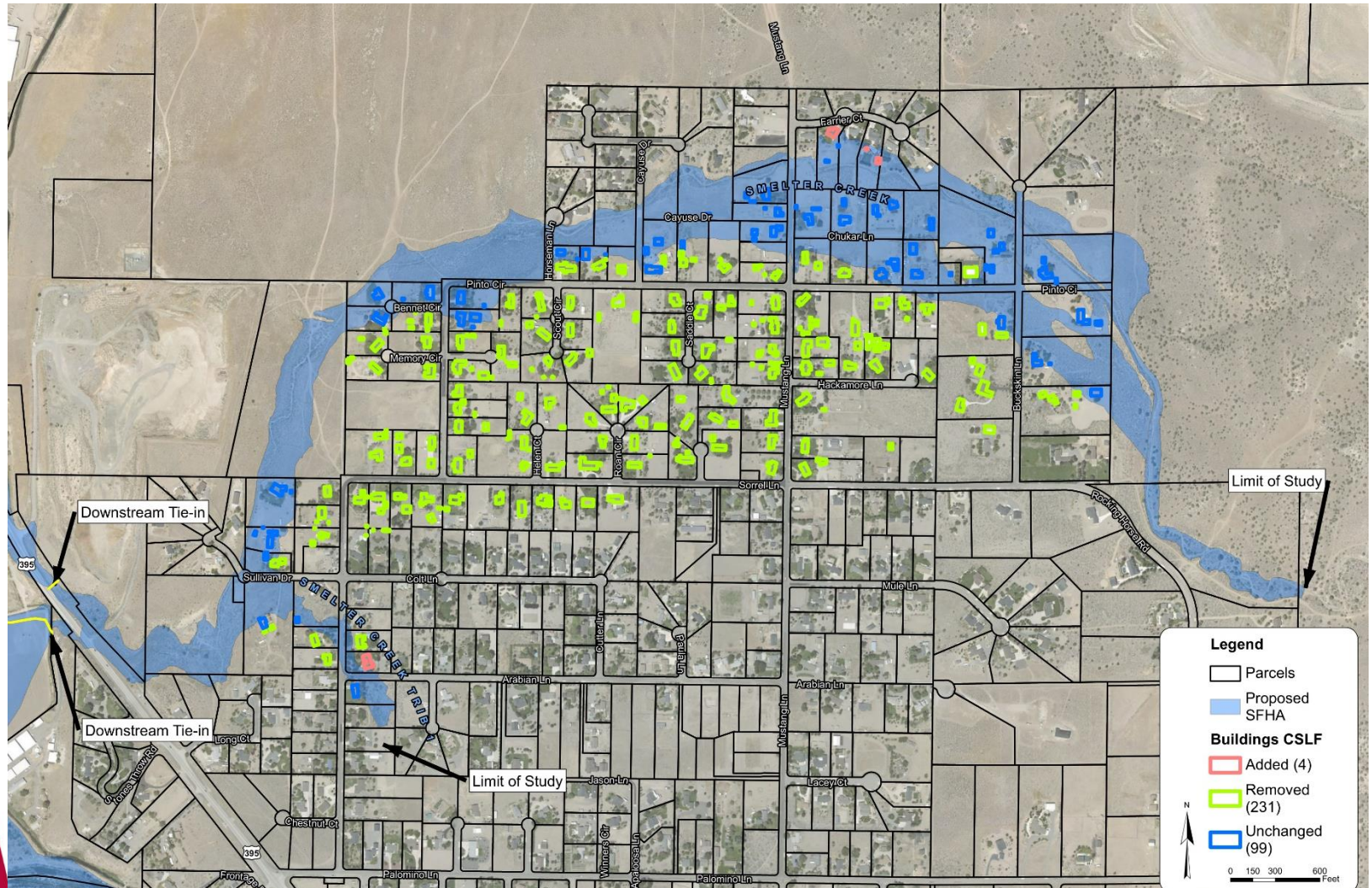
Hydraulic Work Map



Change Maps



Change Maps



Projected Schedule

- FEMA Submittal – 1/14/22 (FEMA has 90 days to respond)
- Comment Response and Resubmittal ~April 2022
- FEMA Approval ~June 2022
- 90-day Appeals Period ~June-September 2022
- Effective Date ~September 2022



Questions?