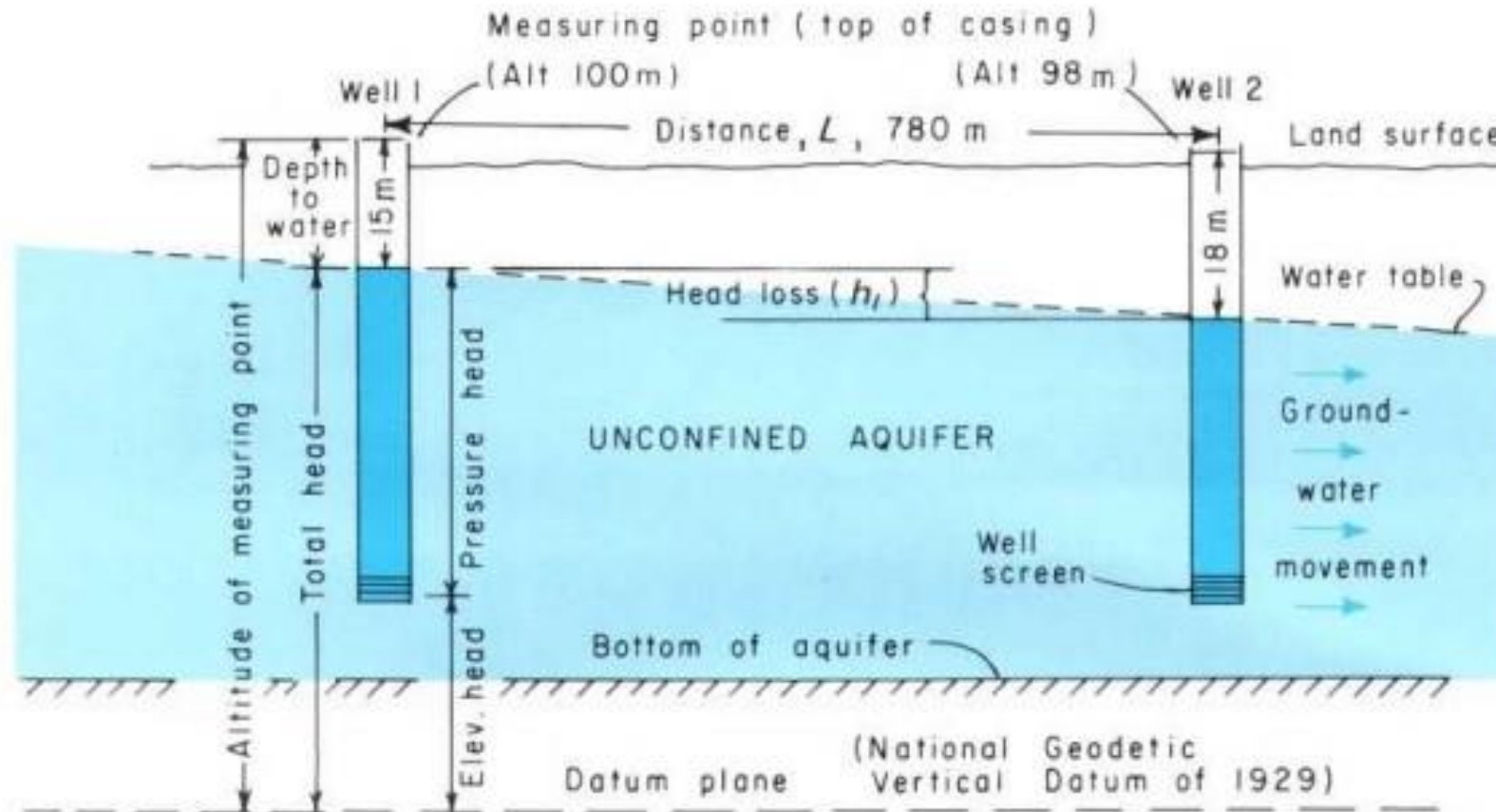


Mesa Vista Groundwater Monitoring Program

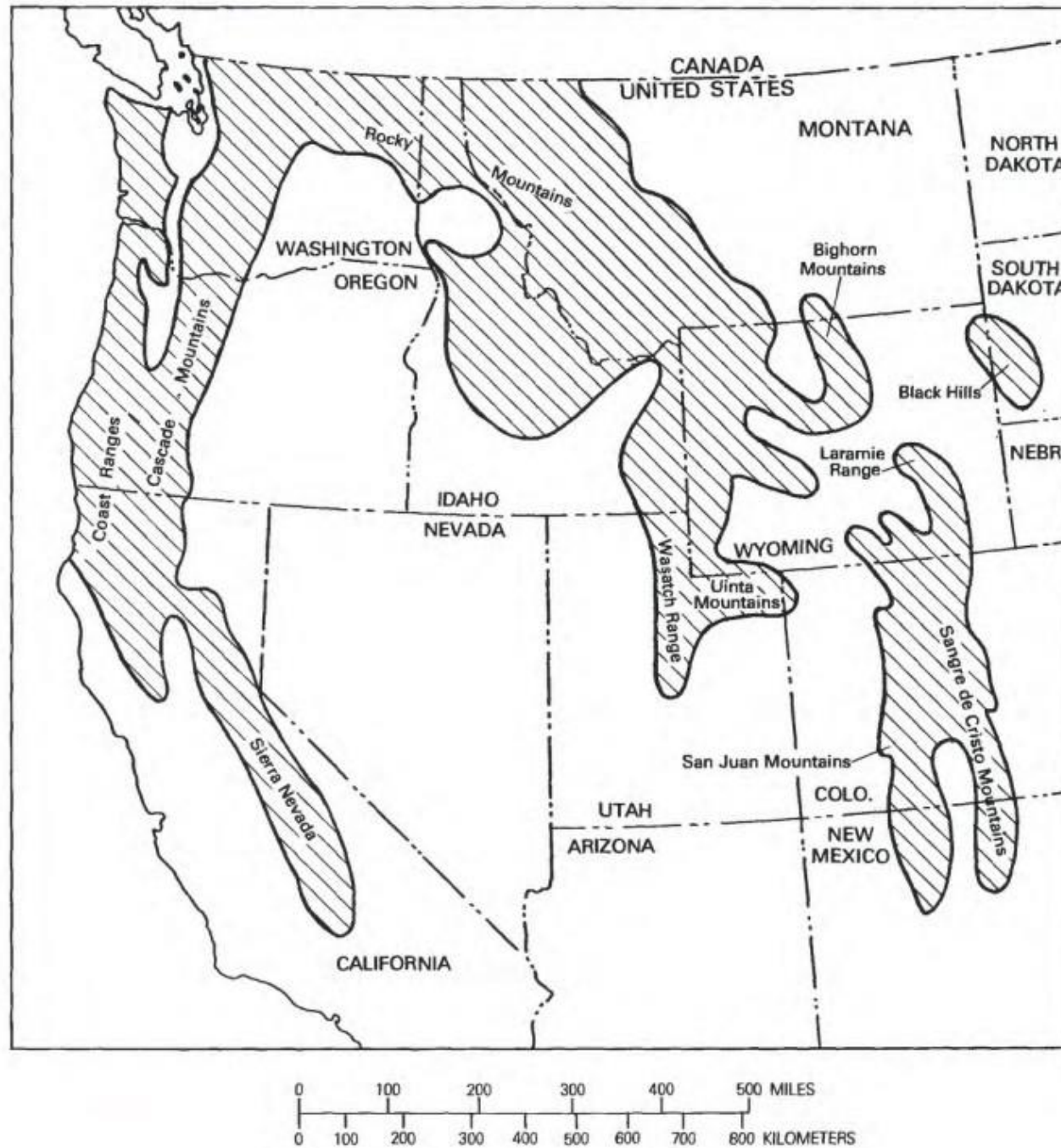
Max Robinson, Water Resource Specialist, CWSD



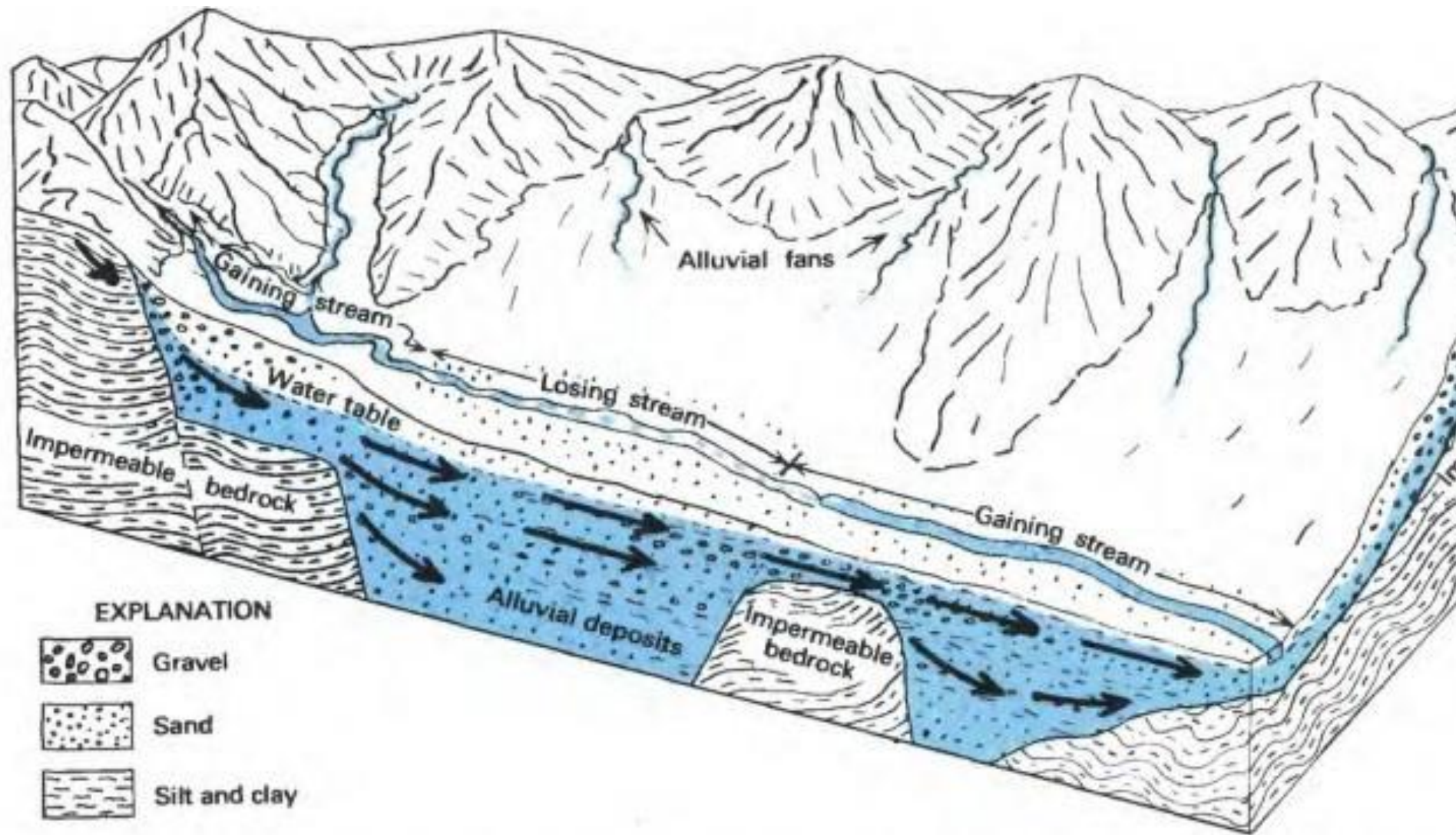
Heath (1983)



Alluvium: A general term for unconsolidated material deposited by a stream or other body of running water.



Heath (1984)





305 Carson View

274 California Rd

Mesa Vista

96 Sunrise Trail

802 Sunrise Trail

705 Sunrise Trail

Paynesville

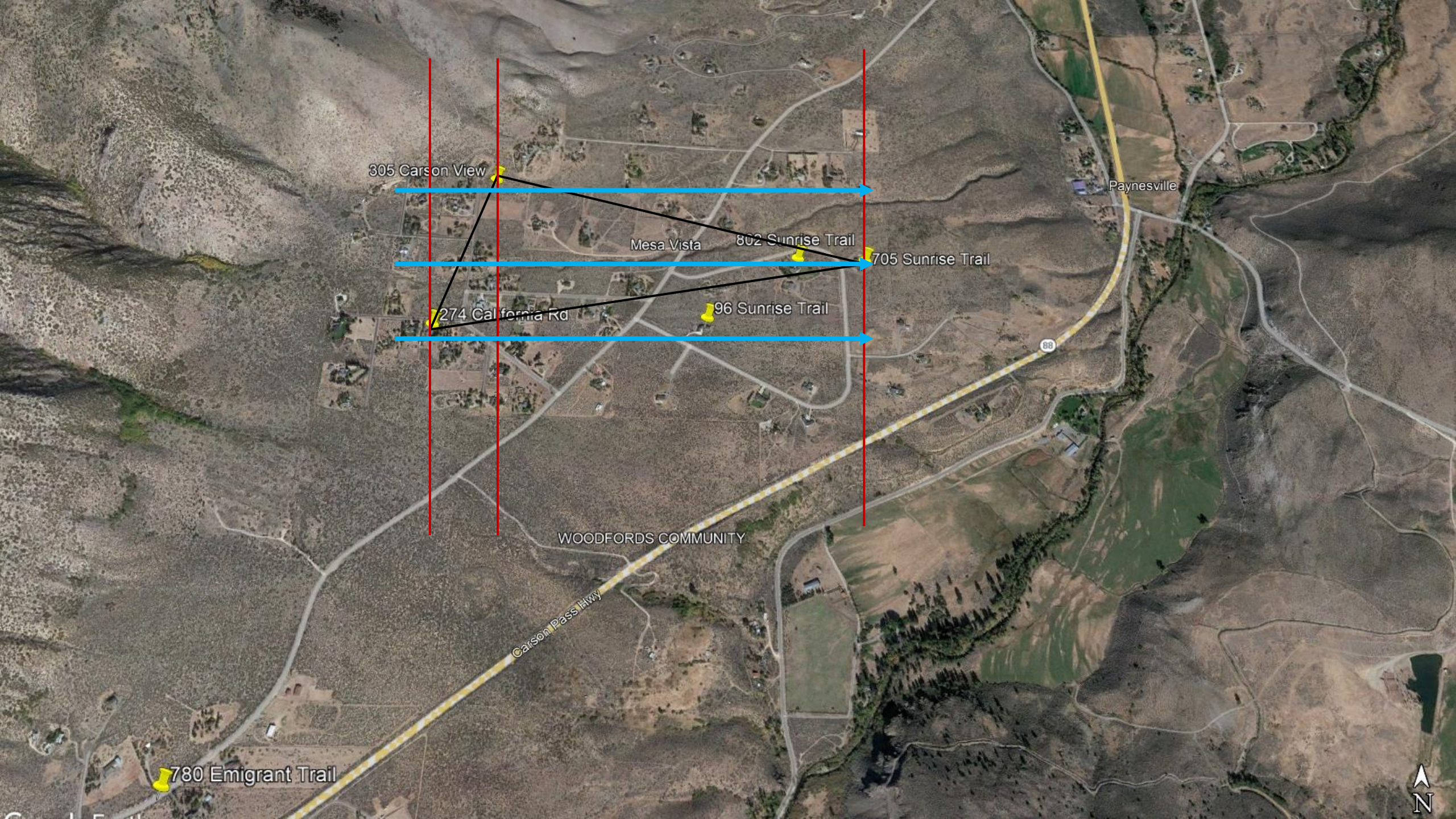
WOODFORDS COMMUNITY

Carson Pass Hwy

88

780 Emigrant Trail





305 Carson View

Paynesville

Mesa Vista

802 Sunrise Trail

705 Sunrise Trail

274 California Rd

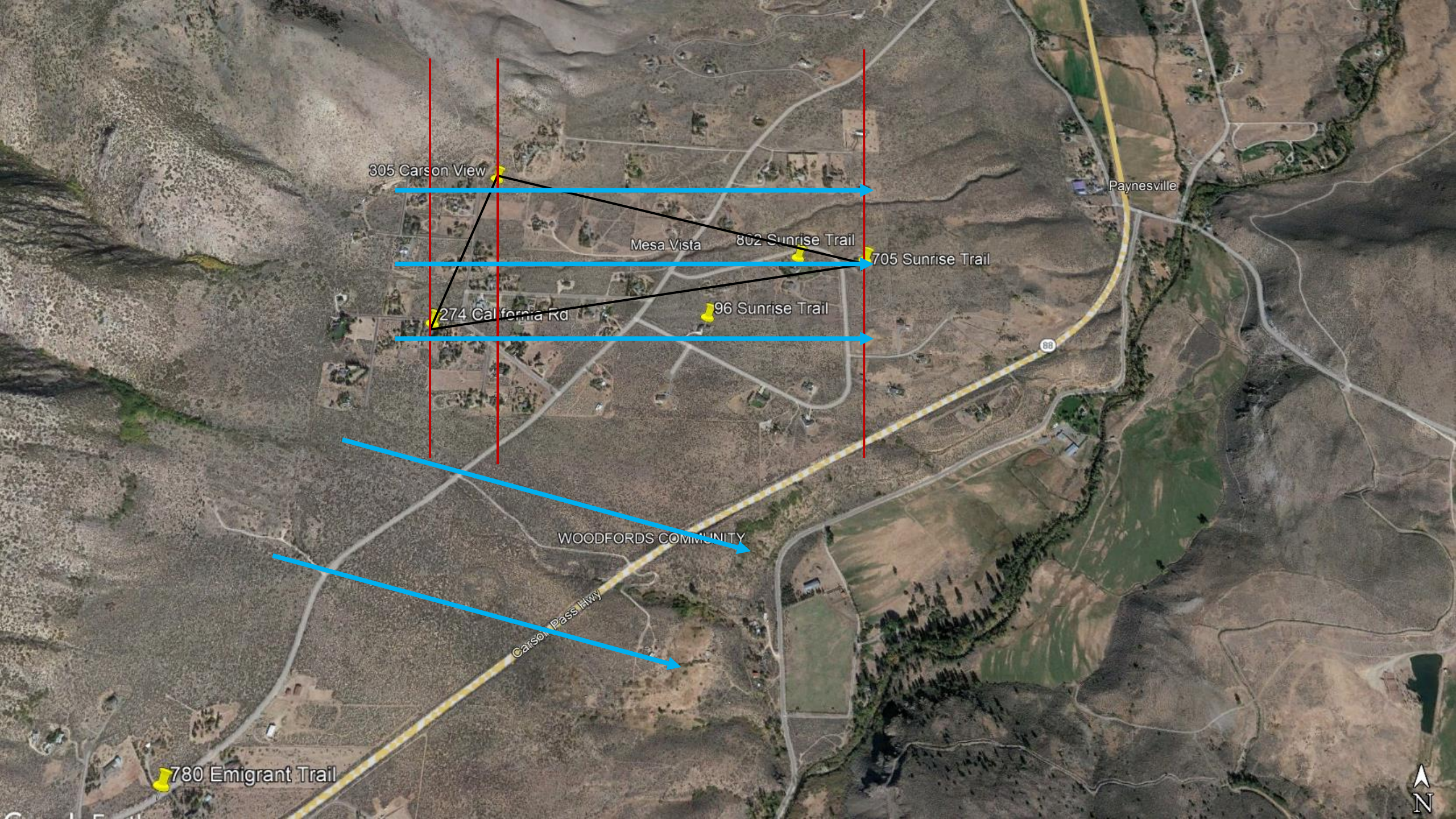
96 Sunrise Trail

WOODFORDS COMMUNITY

Carson Pass Hwy

780 Emigrant Trail





305 Carson View

Paynesville

Mesa Vista

802 Sunrise Trail

705 Sunrise Trail

274 California Rd

96 Sunrise Trail

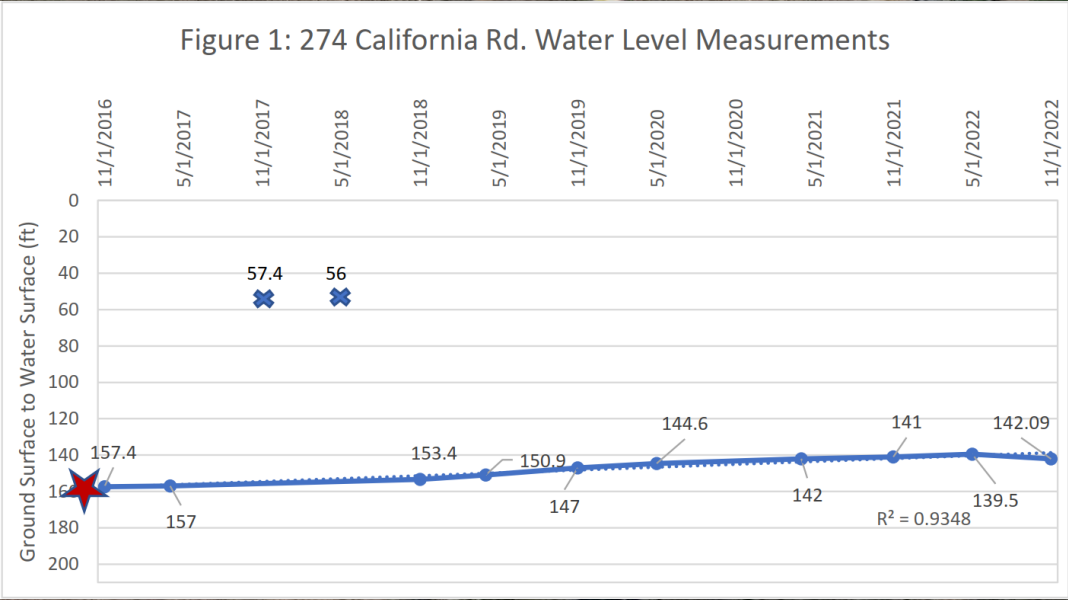
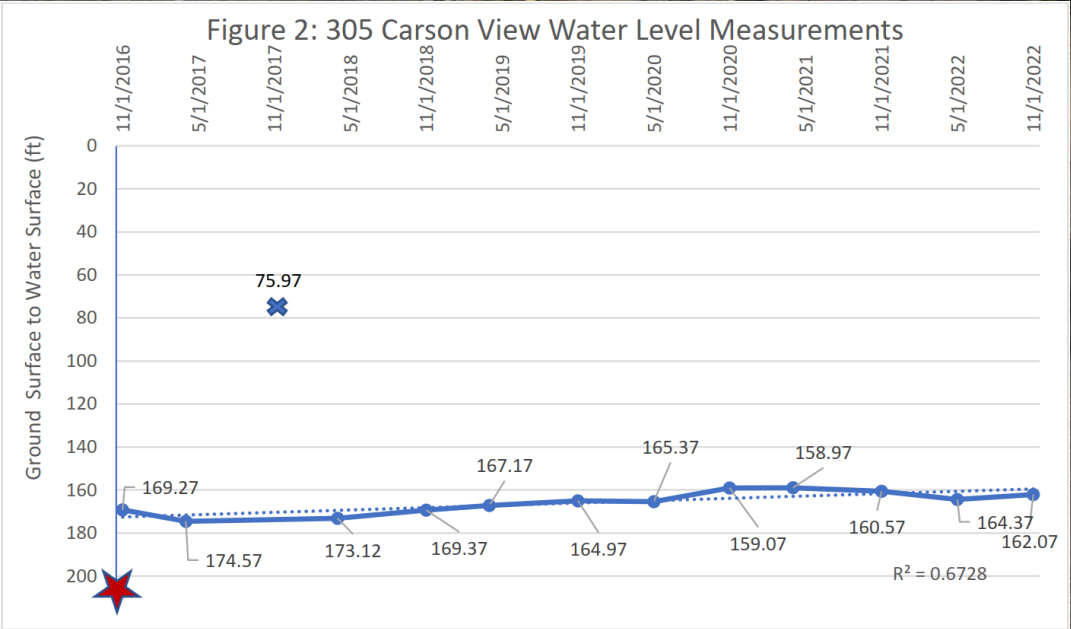
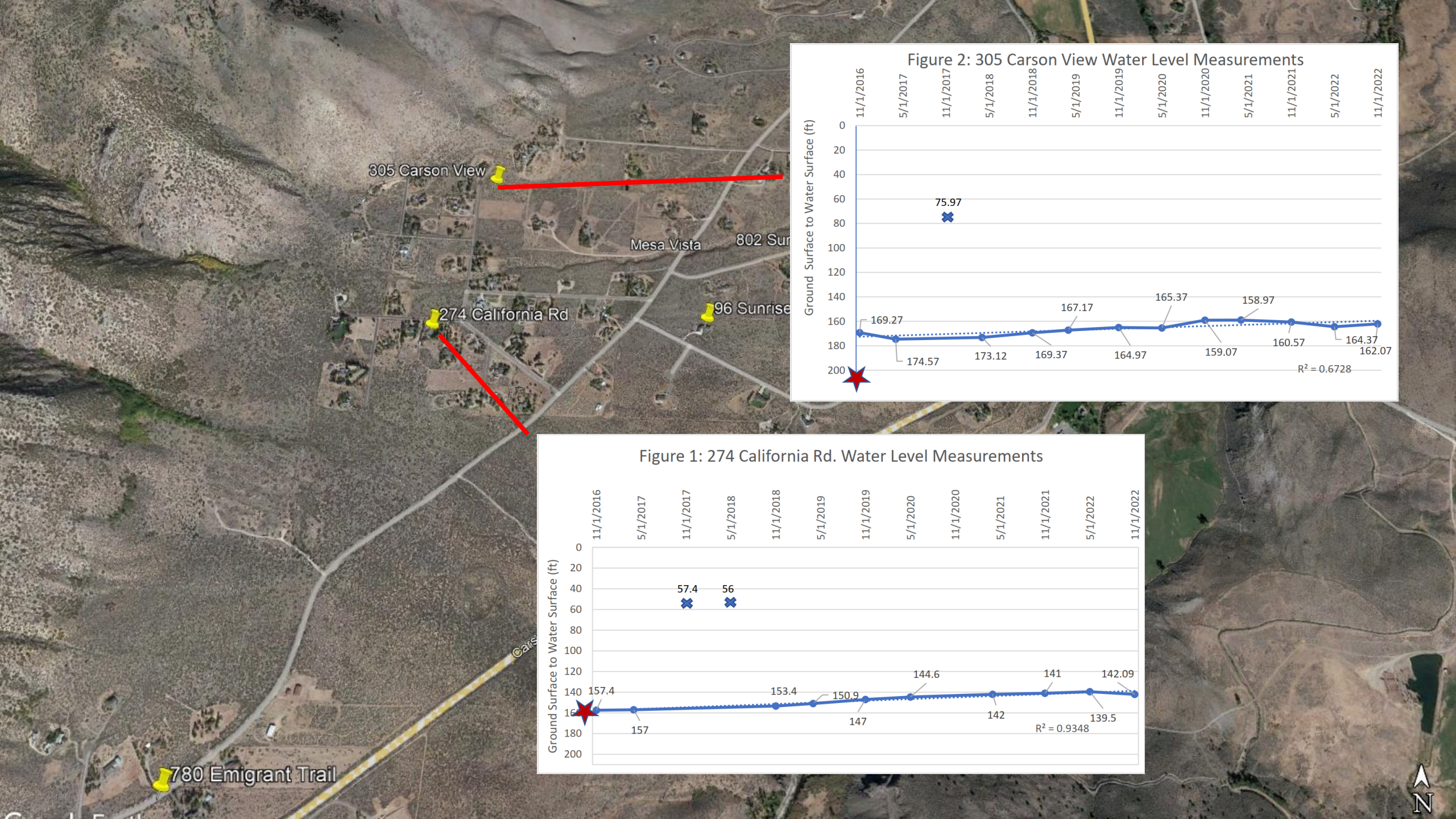
88

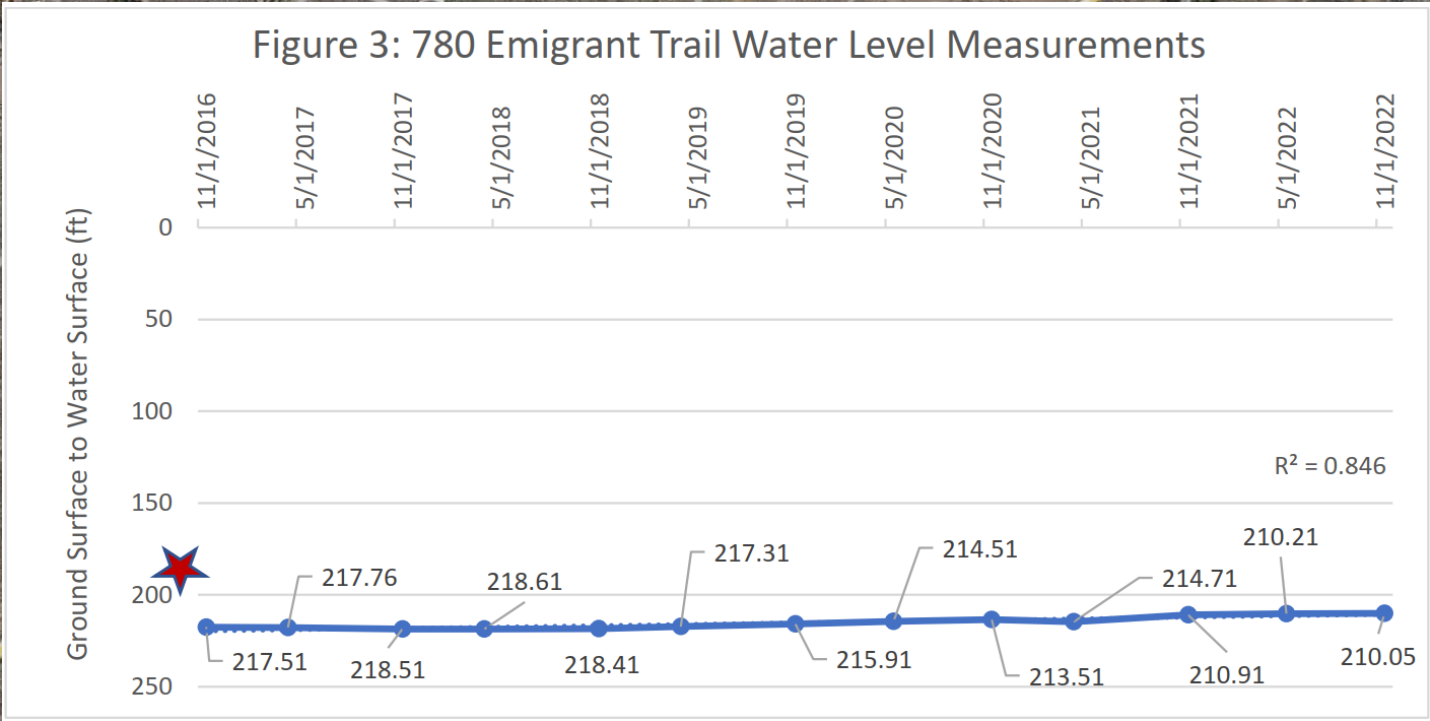
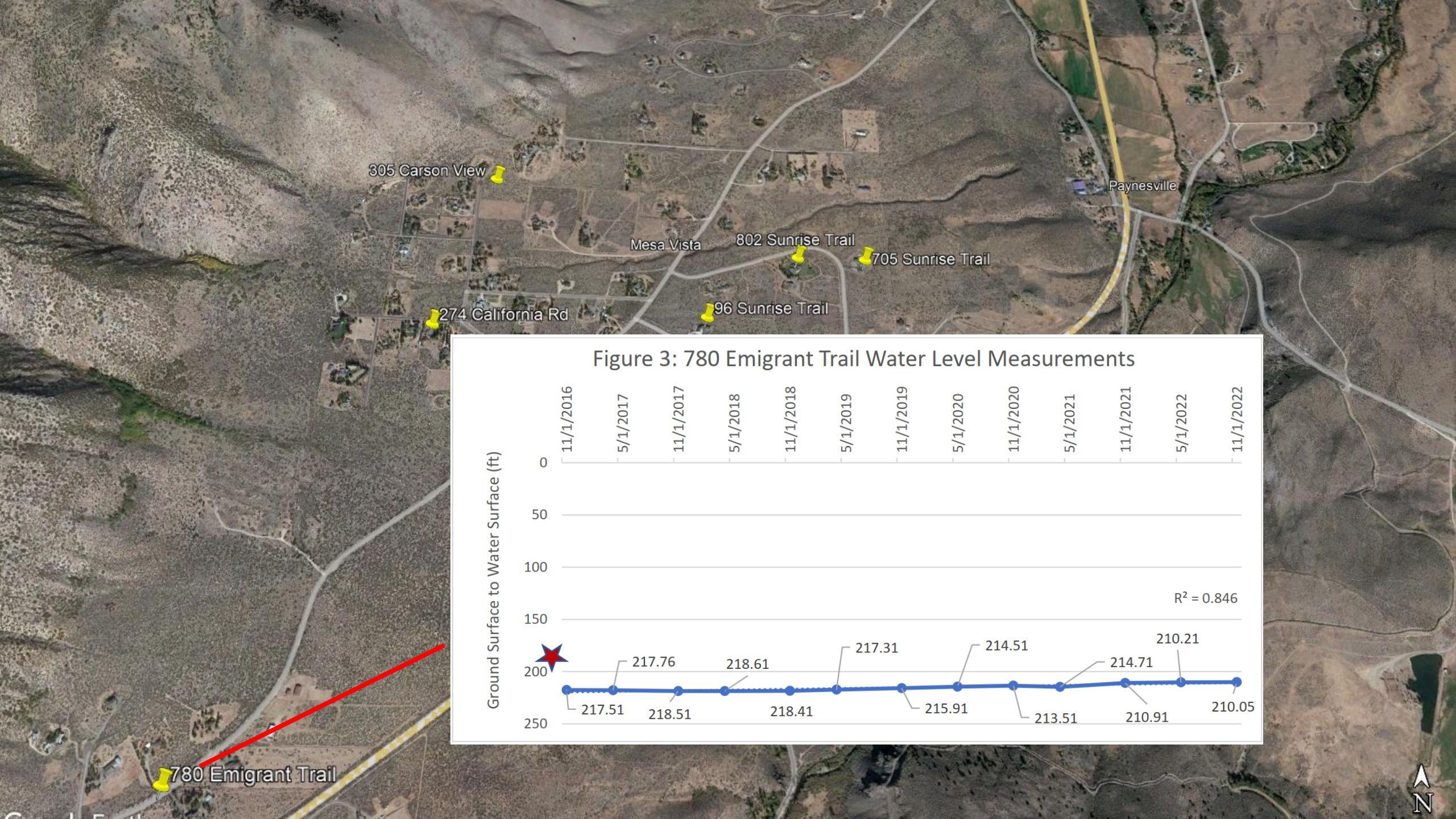
WOODFORDS COMMUNITY

Carson Pass Hwy

780 Emigrant Trail







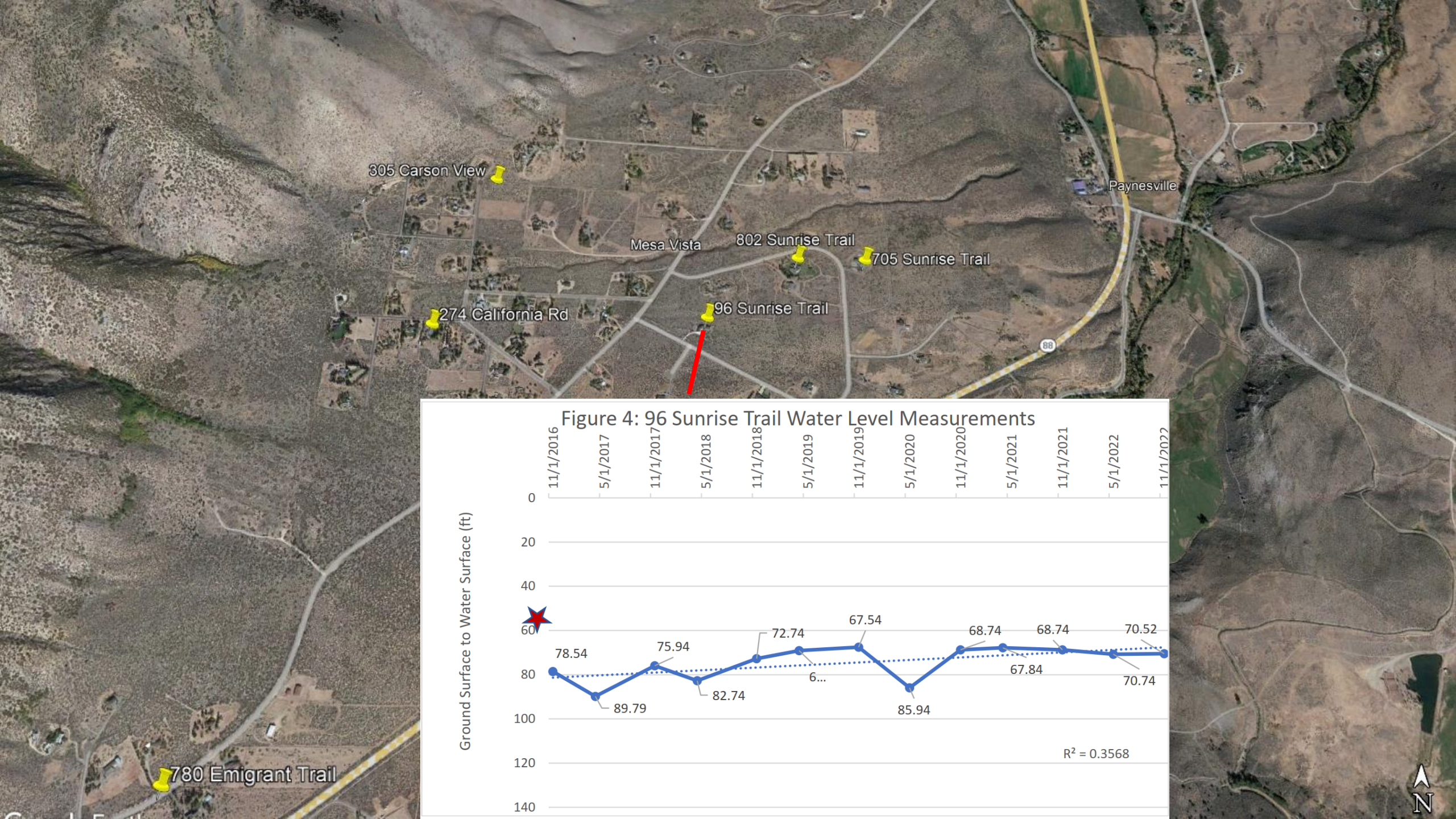
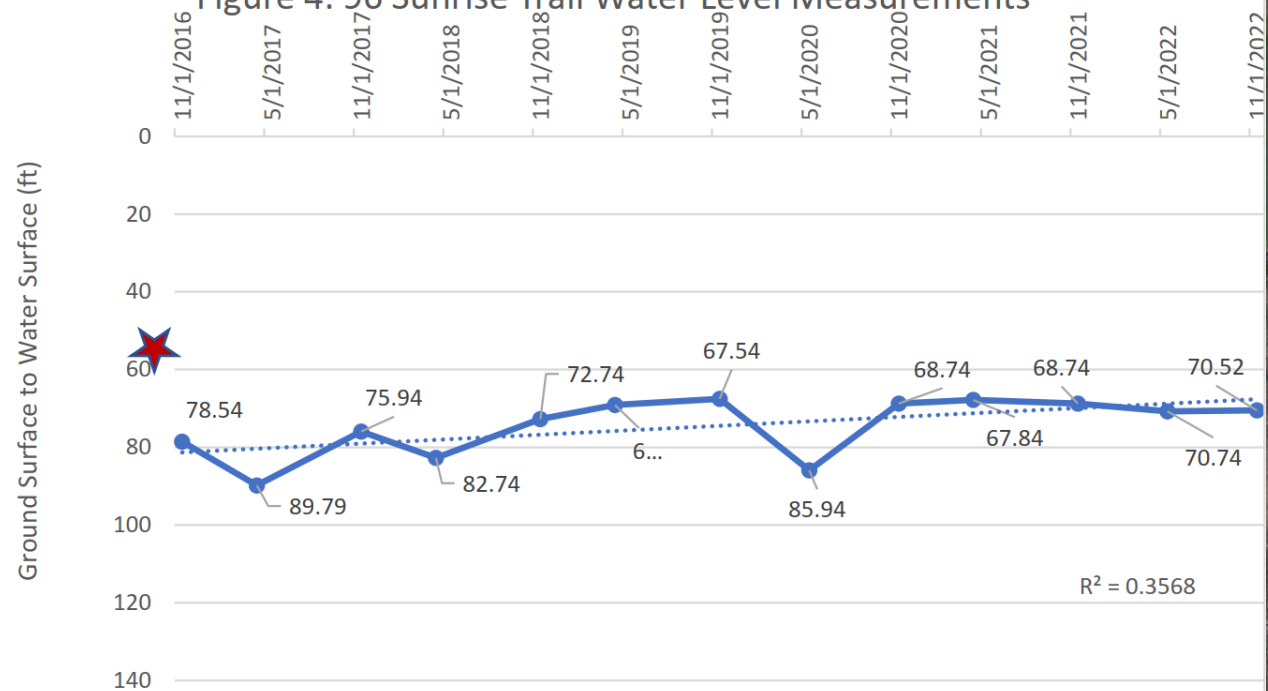


Figure 4: 96 Sunrise Trail Water Level Measurements



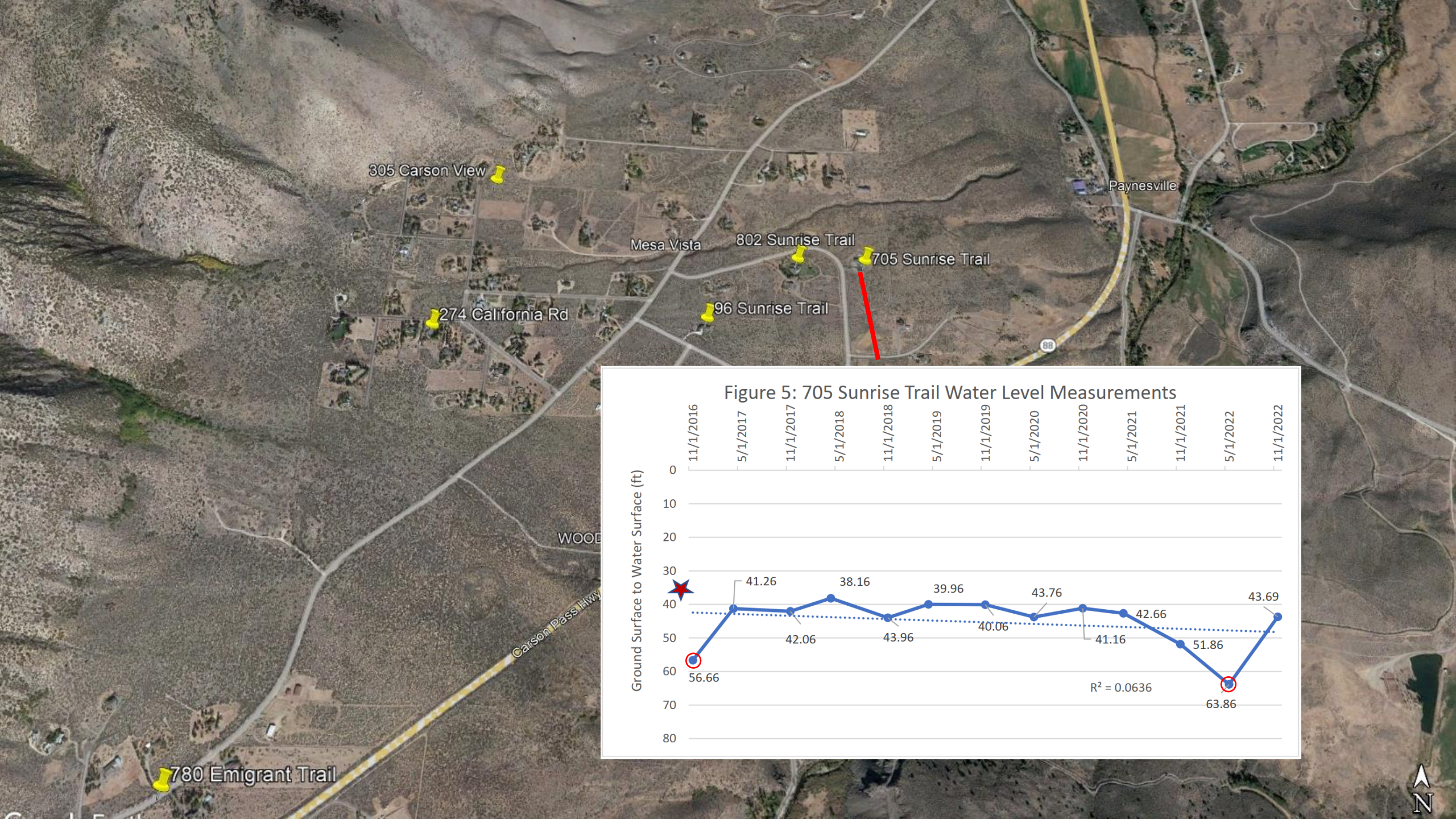
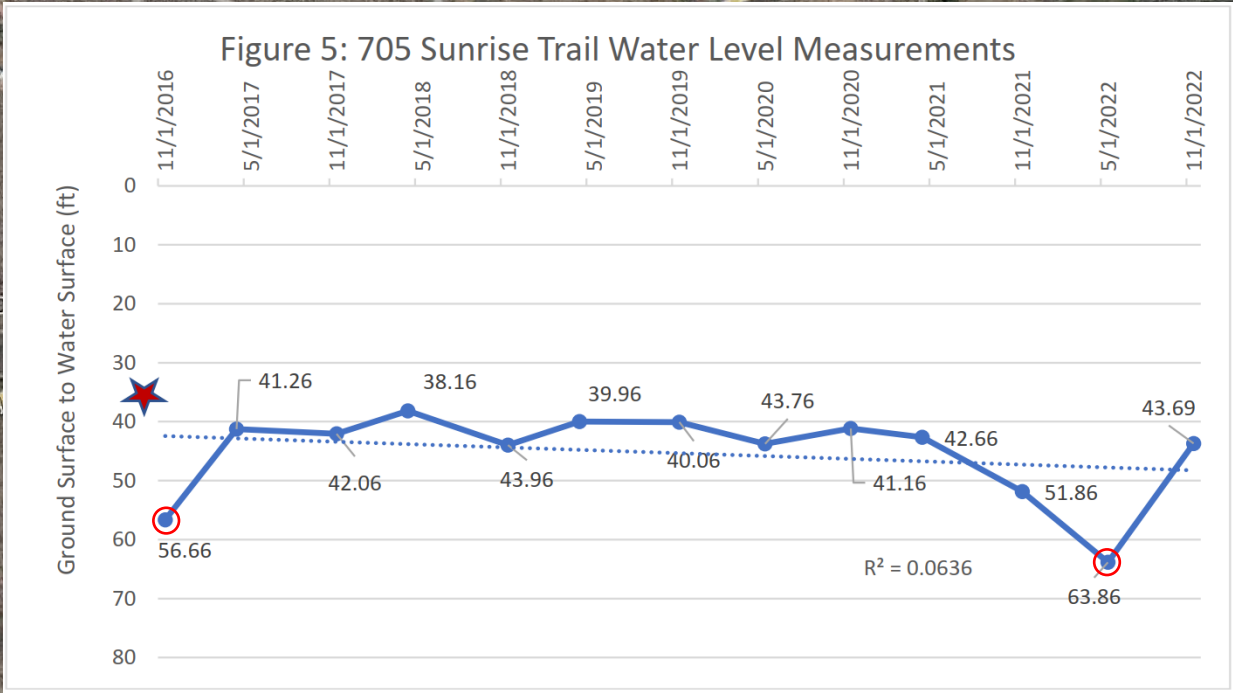


Figure 5: 705 Sunrise Trail Water Level Measurements



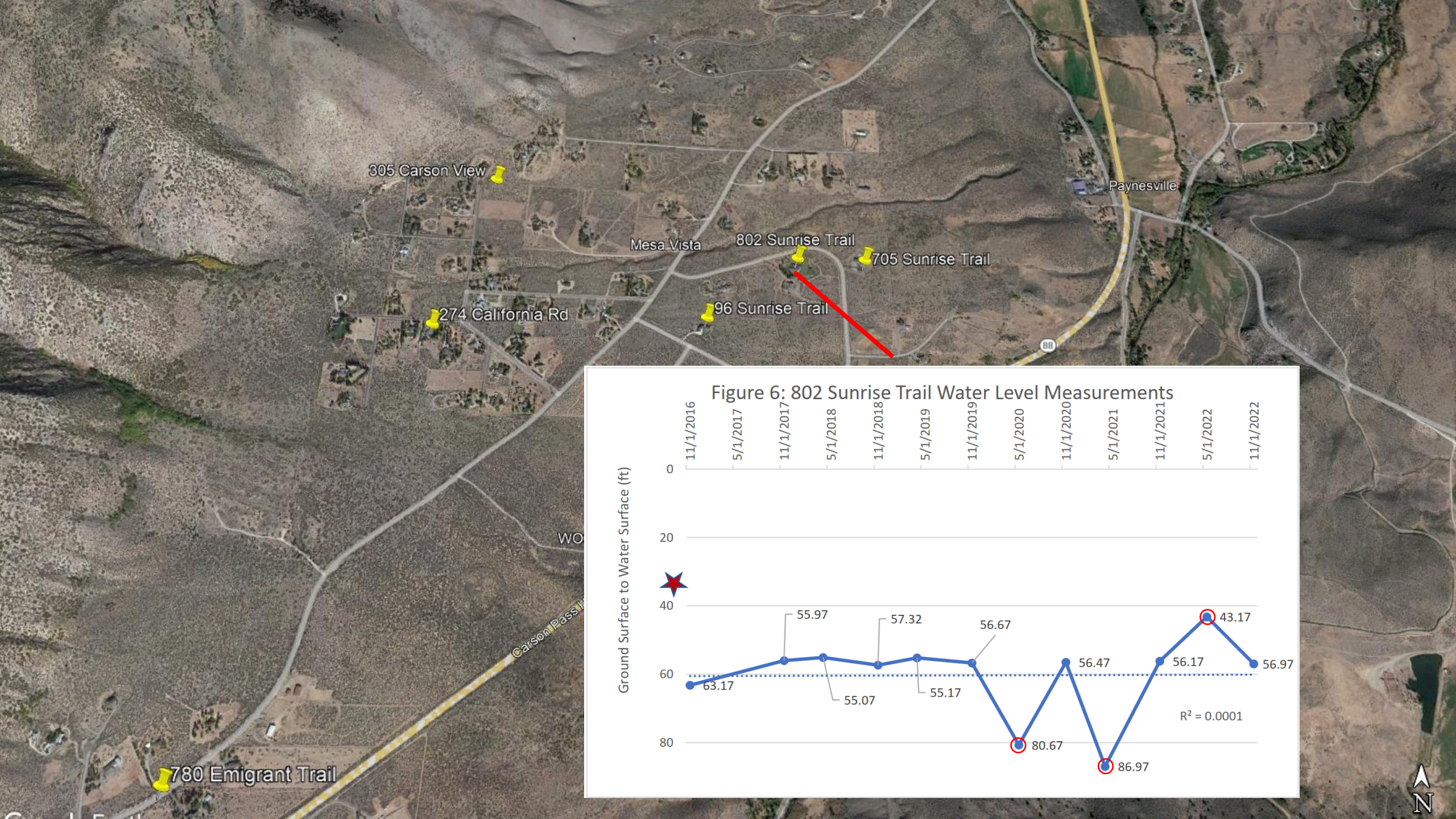
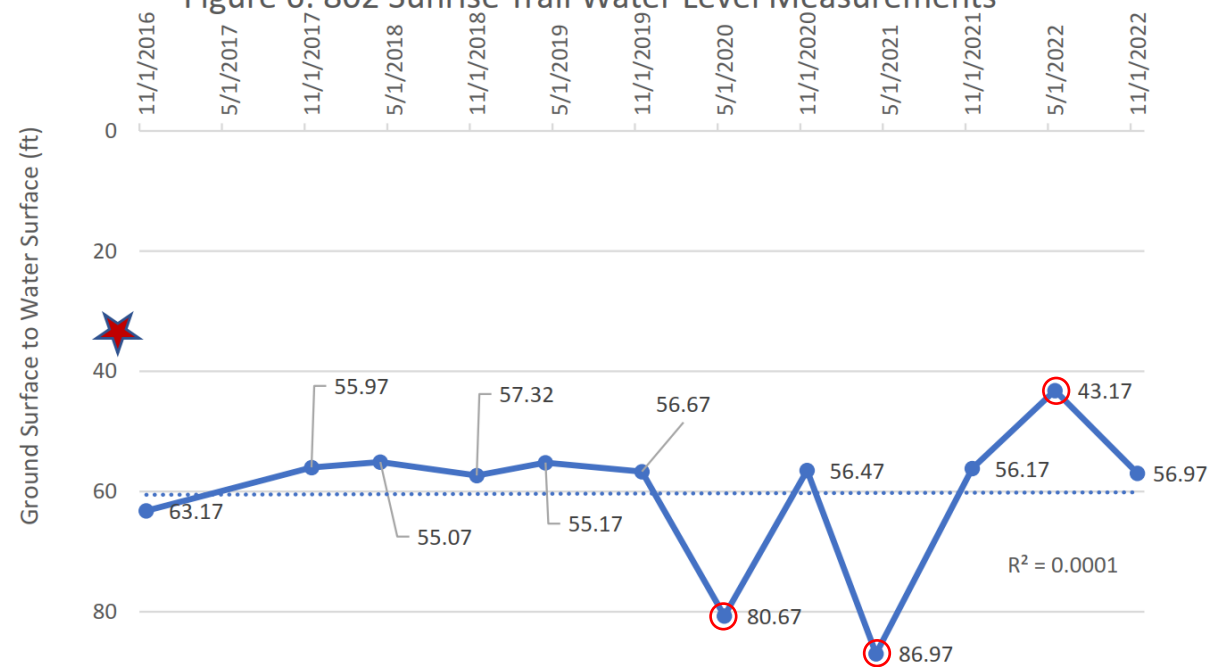


Figure 6: 802 Sunrise Trail Water Level Measurements



Conclusions

- Dynamic mostly unconfined system.
- Robust ability to recharge.
- Rising or maintained water level trends despite drier periods.
- Current pumping demands are sustained and impacts to the aquifer appear to be minimal to none.
- If significant growth in area is desired, thorough hydrogeologic investigations should be considered.