

A stylized, light green leafy branch graphic is positioned in the upper left corner of the slide.

# **Wild Harmony Ranch**

A Holistic Approach to Land  
Management

Abstract organic shapes in muted green and terracotta colors are located in the background, with a white wavy line separating the green and terracotta areas.

# Breaking the Illusion of Normal

\* Why?

\* The Myth of Normal

- Normal: conforming to a standard; usual, typical or expected...

\* It's all about profits...

- The best solutions are sometimes the most unprofitable...

# How deep does the (health) rabbit hole go ???

- \* Where does our food come from?
- \* What does our food eat?
- \* What does our foods, food eat?

“Let food be thy  
medicine and  
medicine be thy food.”

-Hippocrates

## HEALTH INDUSTRY

- Suppression & Elimination

Ex. Suppress the immune system through; alkylating agents, corticosteroids, antimetabolites...

In “hope” of Elimination of dis-ease whilst also eliminating healthy biome and tissue

## AGRICULTURAL INDUSTRY

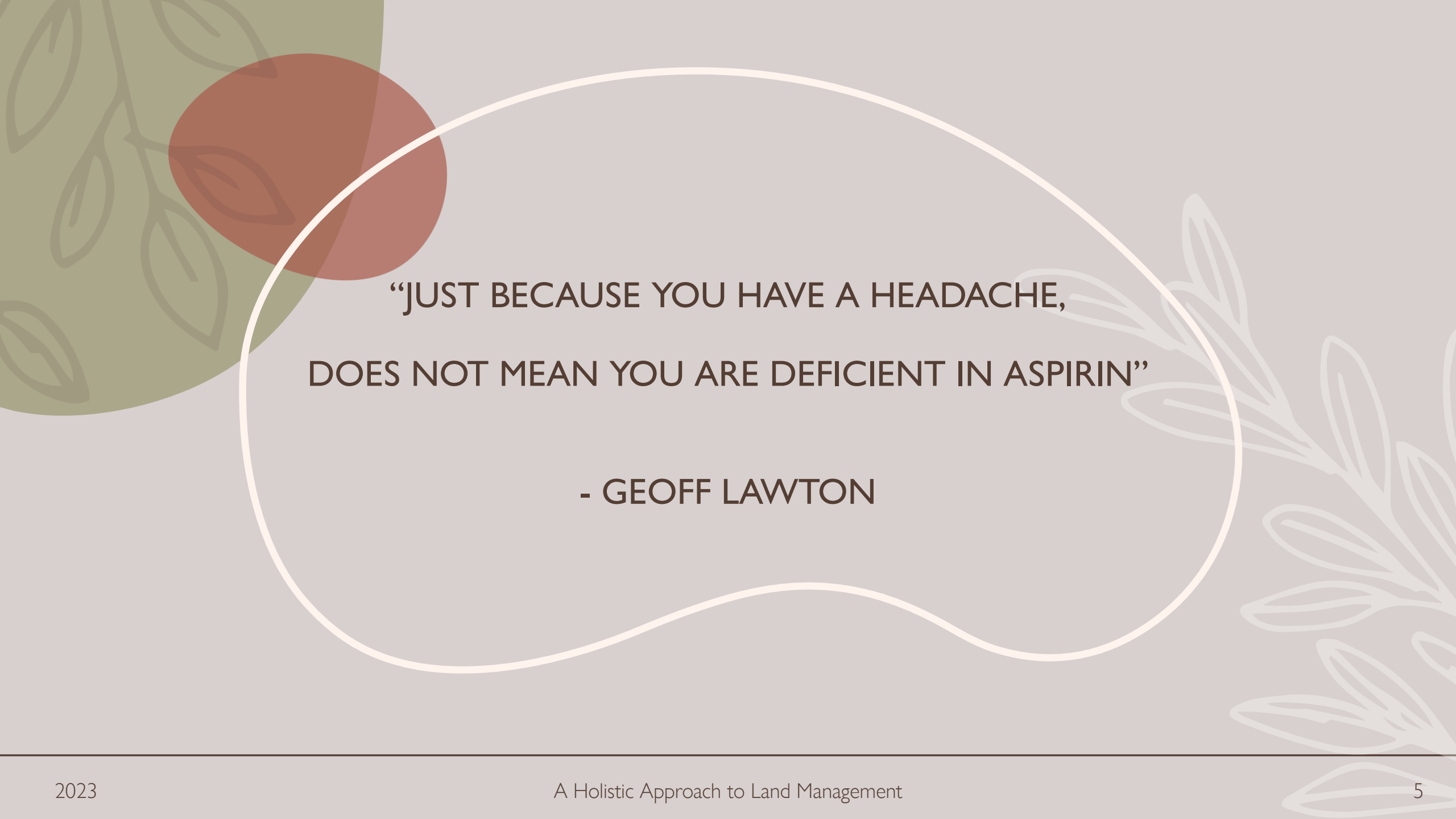
- Suppression & Elimination

Ex. Suppress the WEEDS & PESTS through; pesticides, herbicides ...

In “hope” of Elimination of growth/ pests whilst also eliminating healthy biome and soil

## THE KNEE JERK SOLUTION

- Chemical Sterilization (Good & Bad)
- Synthetic Enrichment



“JUST BECAUSE YOU HAVE A HEADACHE,  
DOES NOT MEAN YOU ARE DEFICIENT IN ASPIRIN”

- GEOFF LAWTON

## BIOLOGICAL SYSTEM VIEW

- Takes into account “ A Complex Biological System” integrating multiple species beyond a singular yield crop and requires collaboration of multiple species to support system

## MECHANISTIC VIEW

- Attempts to simplify “ A Complex Biological System” for the sole use of machinery to obtain a specific yield.

“If you want to make small changes, change the way you do things. If you want to make major changes, change the way you see things.”

— Don Campbell

- Acquired in 2019

- 115 Acres
- 70 Acres in flood field (alfalfa hay)
- 20 Acres in riparian tree , alongside the Carson River
- No livestock on property (30 +years)
- Unirrigated for at least 2 years or more prior to 2019
- Monocrop of Alfalfa
- Fields conditions:
  - Large spaces between plants, no ground cover

## WILD HARMONY RANCH



# Guiding Principles

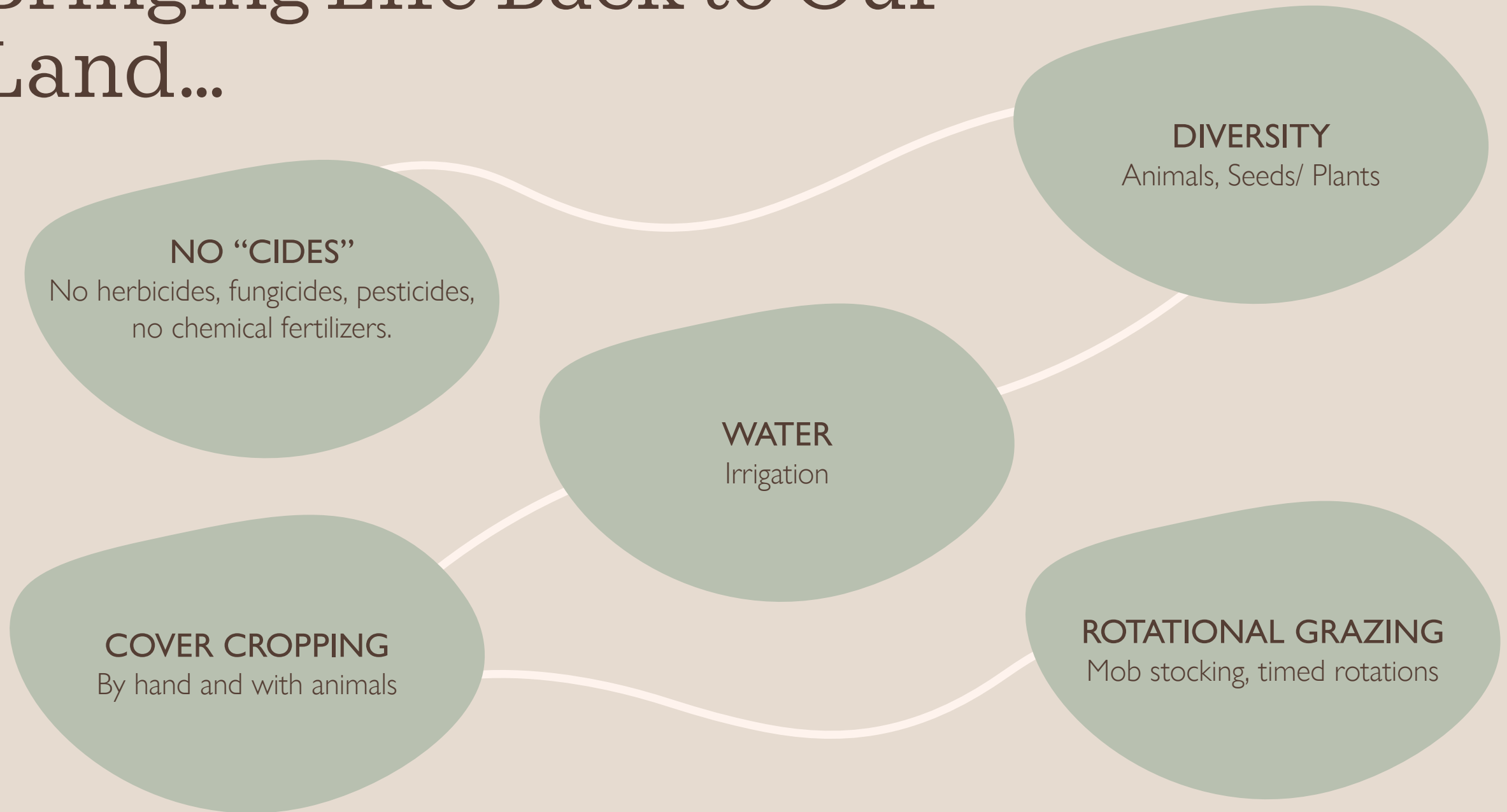
- EARTH CARE
- PEOPLE CARE
- OBTAINING A YIELD

- EARTH CARE

- Keep the ground covered
- Reduce disturbance of the soil layers
- Plant diversity & Animal diversity
- Use of livestock and their manures on landscape
- Manage for what you want, not what you don't want (No Synthetics)
- Timing in all things matters (plants/ animals)
- Mimic Nature in as many ways possible



# Bringing Life Back to Our Land...



# meet our team



**THE NANNIES**

Weed Abatement Team



**THE CLUCKERS**

Tilling Team & Pest Control



**PRINCESS BUTTERCUP**

CEO of Fertilization



**FREYA & HEIMDALL**

Predator Management Team



# No Animals





# No Animals





# Animals





# Animals

Same Field Different Section



No Animals

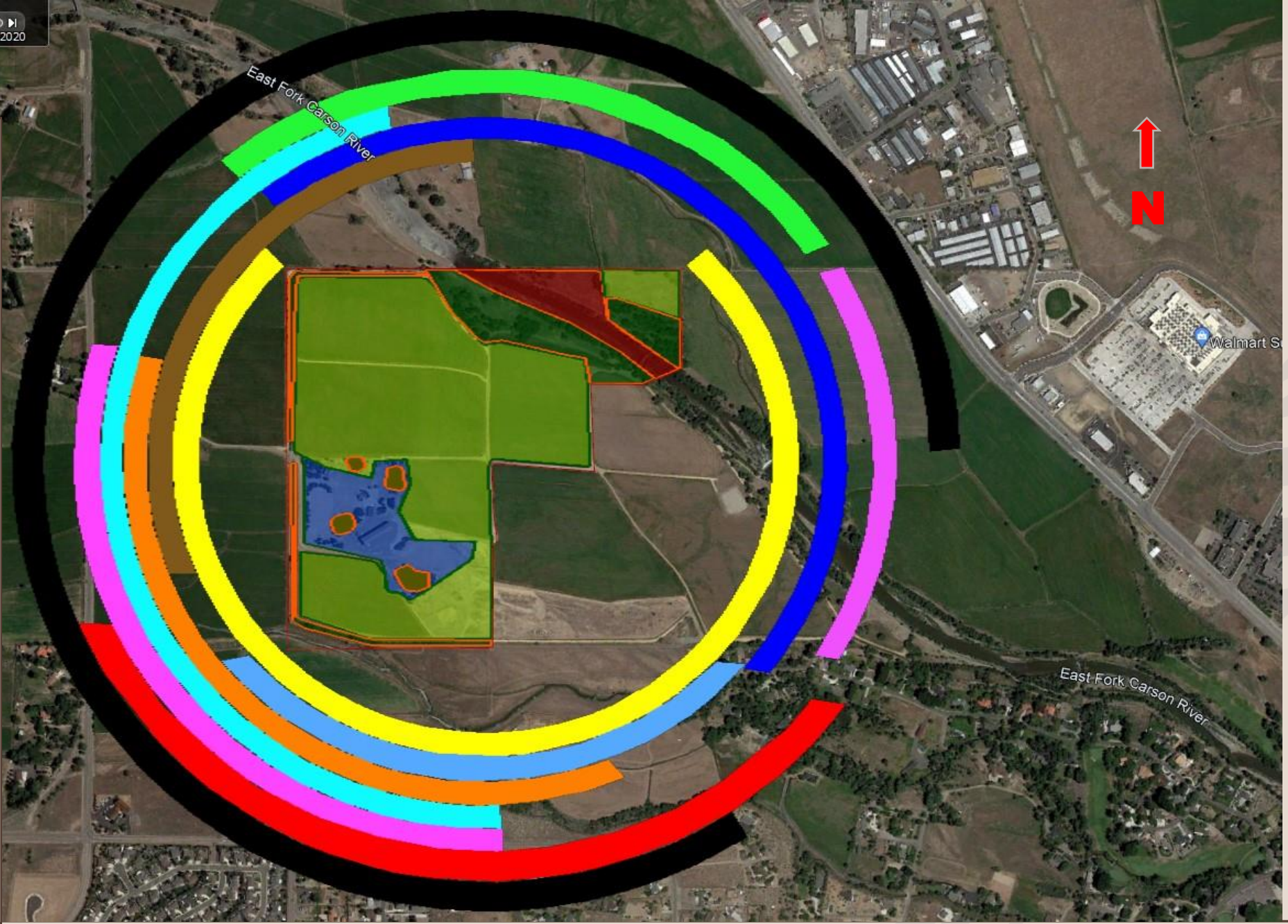


Animals



# Sector & Zone

- Noise
- Wildlife
- Mountain View
- Winter Winds
- Winter Sun
- Property Drainage
- Flood Direction
- Summer Sun
- Summer Winds
- Fire Risk





# Turbidity Traps





# In the future...

- Further integrate tree systems into our fields
- Stabilize and restore riparian area located near the Carson River
- Integrate earth works (i.e. sediment traps) to assist water absorption on our land and reduce soil run off



# Seed List

## COVER CROP

YELLOW MUSTARD  
HYBRID SUDAN GRASS  
MAXUM FIELD PEAS  
BUCKWHEAT  
FORAGE PURPLE TOP WHITE GLOBE  
TURNIPS  
OATS (COMMON)  
HAIRY VETCH  
WINTER RYE (COMMON)  
BARELY (QUEST)

## FIELD SEED

WHEAT GRASS INTERMEDIATE MANIFEST  
WILD RYE RUSSIAN BOZOISKY  
RYEGRASS PERENNIAL PASTURE  
RYEGRASS ANNUAL MADRONE  
WHEAT GRASS CRESTED HYCREST  
SAINFOIN REMONT  
ALFALFA LADAK 65  
WHITE DUTCH CLOVER  
CEREAL RYE FALL V.N.S  
ORCHARD GRASS PROFILE  
FESCUE TALL FAWN  
BLUE GRASS SANDBERGH HIGH PL  
RYEGRASS ANNUAL GULF  
BROME SMOOTH  
SAINFOIN SHOSHONE  
CLOVER ALSIKE  
RYEGRASS INTERMEDIATE RILEY  
BLACK OIL SUNFLOWER SEED – ON EDGE OF  
FIELD OR ON CHECKS NOT HAYED

The background features a light gray base with large, soft-edged organic shapes in muted red and olive green. A thin white line outlines a shape on the right. In the top left, there is a faint, light gray sketch of a leafy branch.

thank you