



# DOUGLAS COUNTY STORMWATER DIVISION

---

## Area Drainage Master Planning



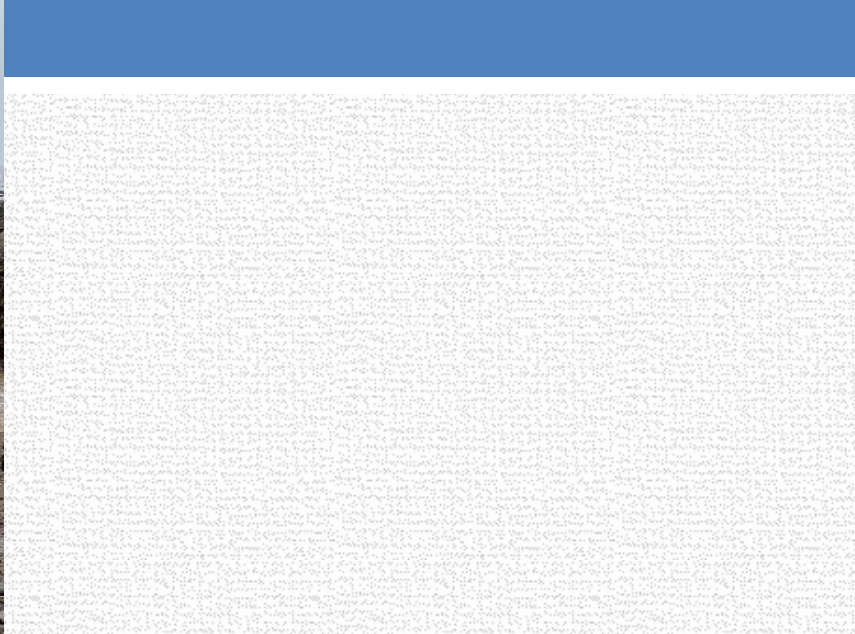
Courtney Walker  
Stormwater Program Manager  
Douglas County Public Works

# Douglas County Area Drainage Master Plans



- 💧 Johnson Lane Area Drainage Master Plan
- 💧 Alpine View Estates Drainage Master Plan
- 💧 Ruhenstroth Area Drainage Master Plan
- 💧 Buckeye Creek Flood Mitigation Design
- 💧 Pinenut Creek Flood Mitigation Feasibility Study
- 💧 Topaz Drainage Study Drainage Report

Smelter Creek in Ruhentstroth



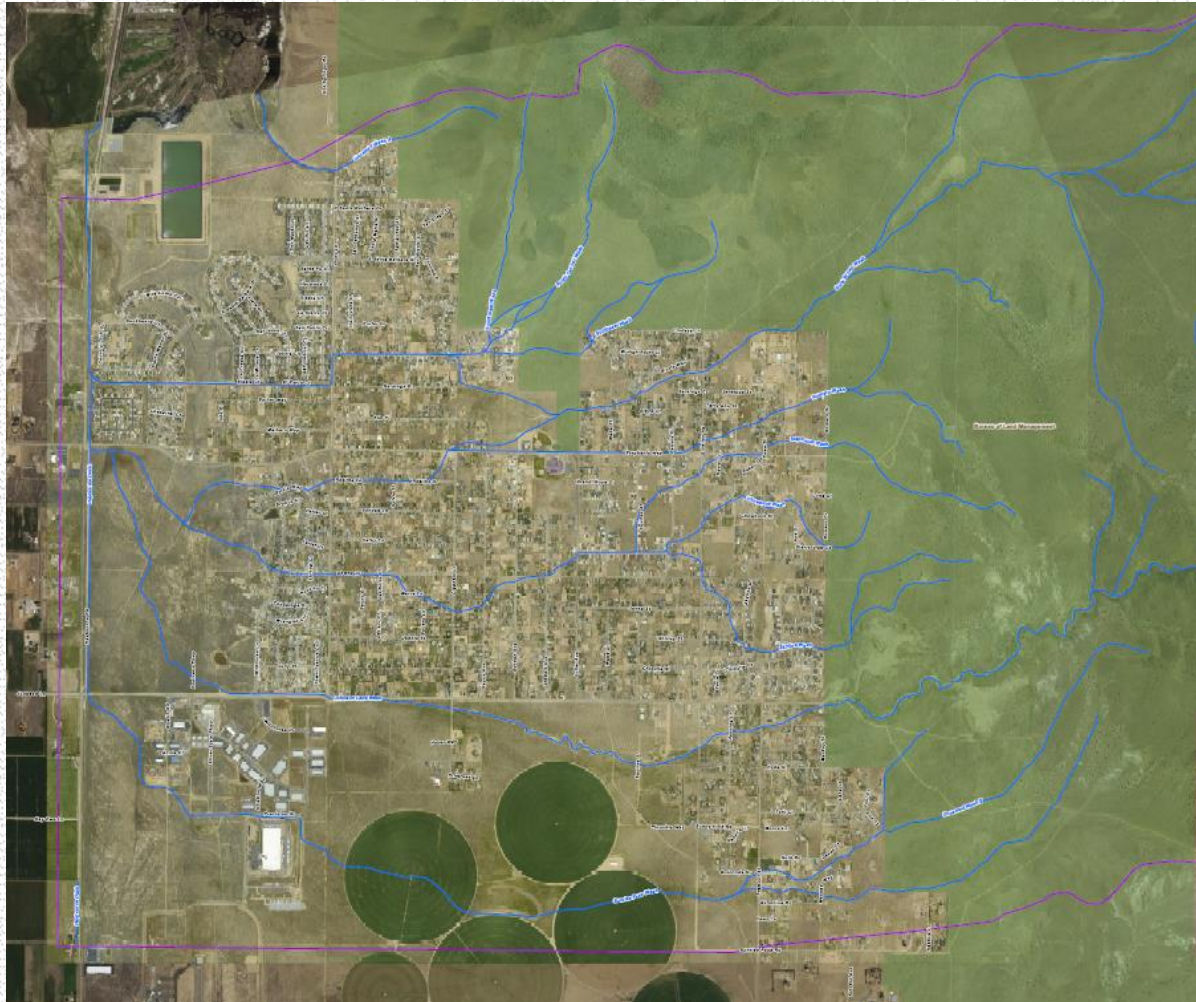
Pinenut Creek in Fish Springs



# Buckeye Creek in Minden



# Questions?



Courtney Walker, Stormwater Program Manager  
Douglas County Public Works  
775.782.6215  
[cwalker@douglasnv.us](mailto:cwalker@douglasnv.us)