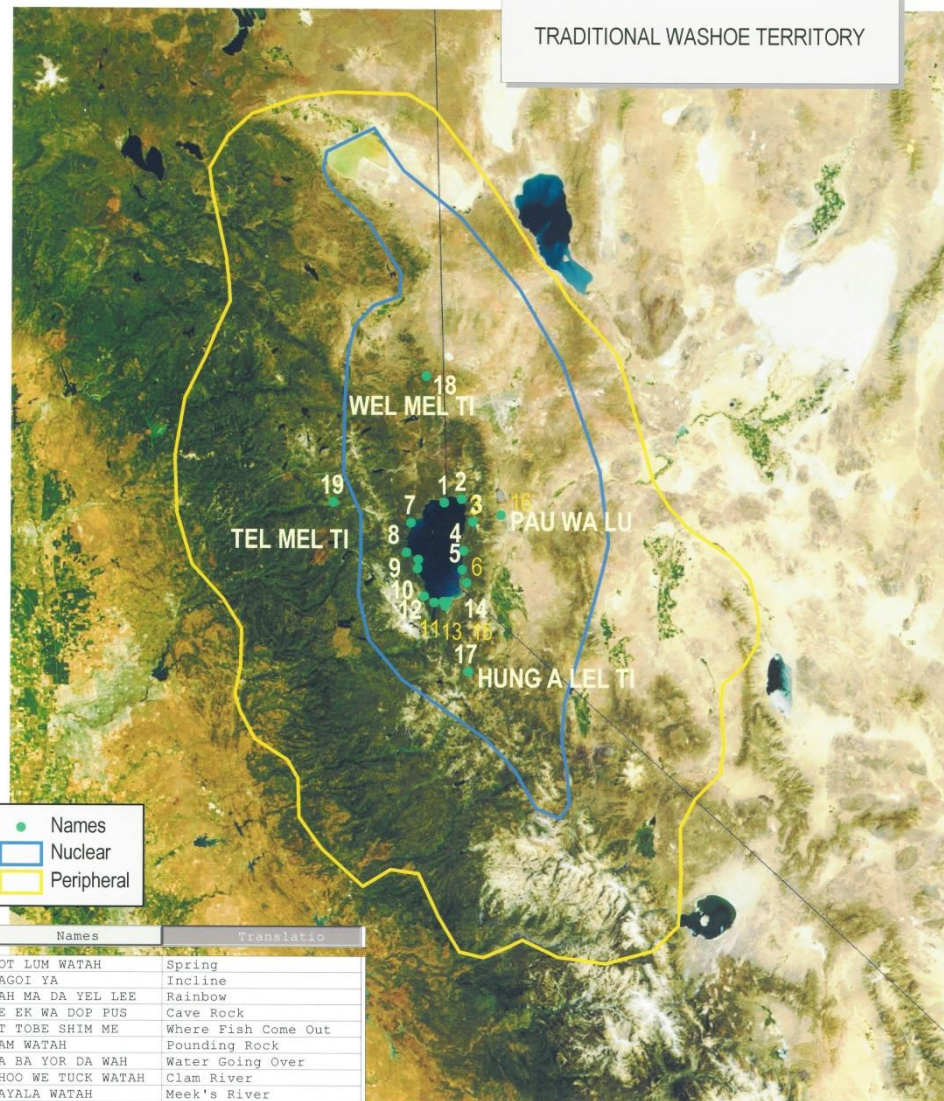




Washoe Environmental Protection
Department



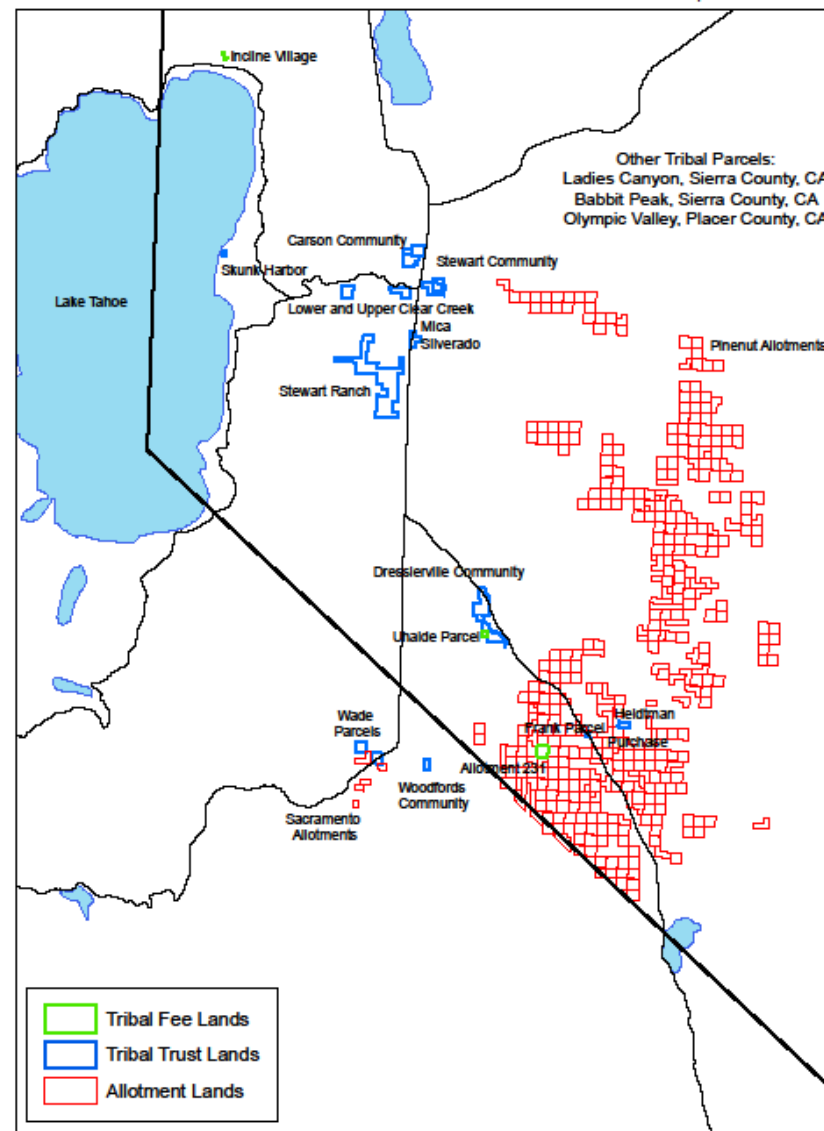
ID	Names	Translation
1	MOT LUM WATAH	Spring
2	MAGOI YA	Incline
3	DAH MA DA YEL LEE	Rainbow
4	DE EK WA DOP PUS	Cave Rock
5	OT TOBE SHIM ME	Where Fish Come Out
6	LAM WATAH	Pounding Rock
7	DA BA YOR DA WAH	Water Going Over
8	SHOO WE TUCK WATAH	Clam River
9	MAYALA WATAH	Meek's River
10	MAGULU WATAH	Lonley Gulch
11	ASHUK WATAH	Back River
12	DE GIL EK WATAH	Red River
13	IMGI WATAH	Salmon Creek
14	DAUGA SHASHU	Bright or Light River
15	MATUSH HA WHO WATAH	White Trout River
16	PAU WA LU	People of the Valley
17	HUNG A LEL TI	Southern Band of Washo
18	WEL MEL TI	Northern Band of Washo
19	TEL MEL TI	Western Band of Washo

Washoe Tribe of Nevada & California
Map Created by Phoebe Bender
March 2003



Washoe Tribal Lands

Washoe Tribe of NV and CA
Environmental Protection Department
GIS: J. Johnson
April 2010



0 3 6 12 Miles



This data has been compiled on a geographic information system for the use of Washoe Tribe Environmental. The data does not represent survey delineation and should not be construed as a replacement for the authoritative source. The Washoe Tribe assumes no liability as to the sufficiency or accuracy of this data.

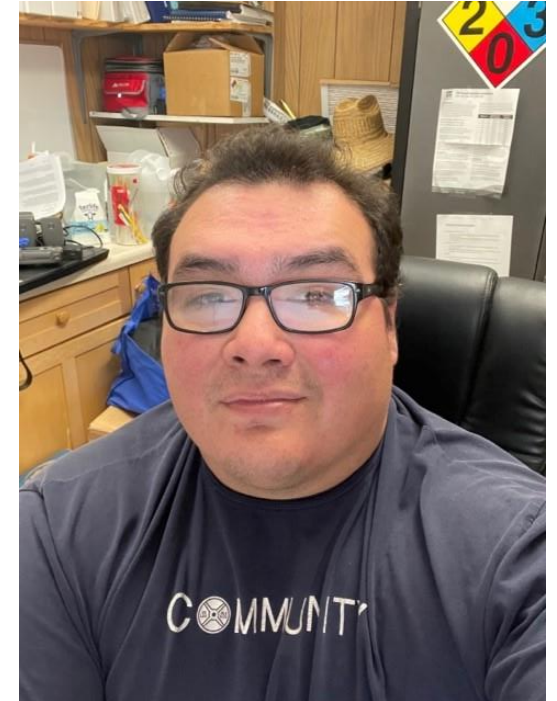
Washoe Environmental Core Water Team



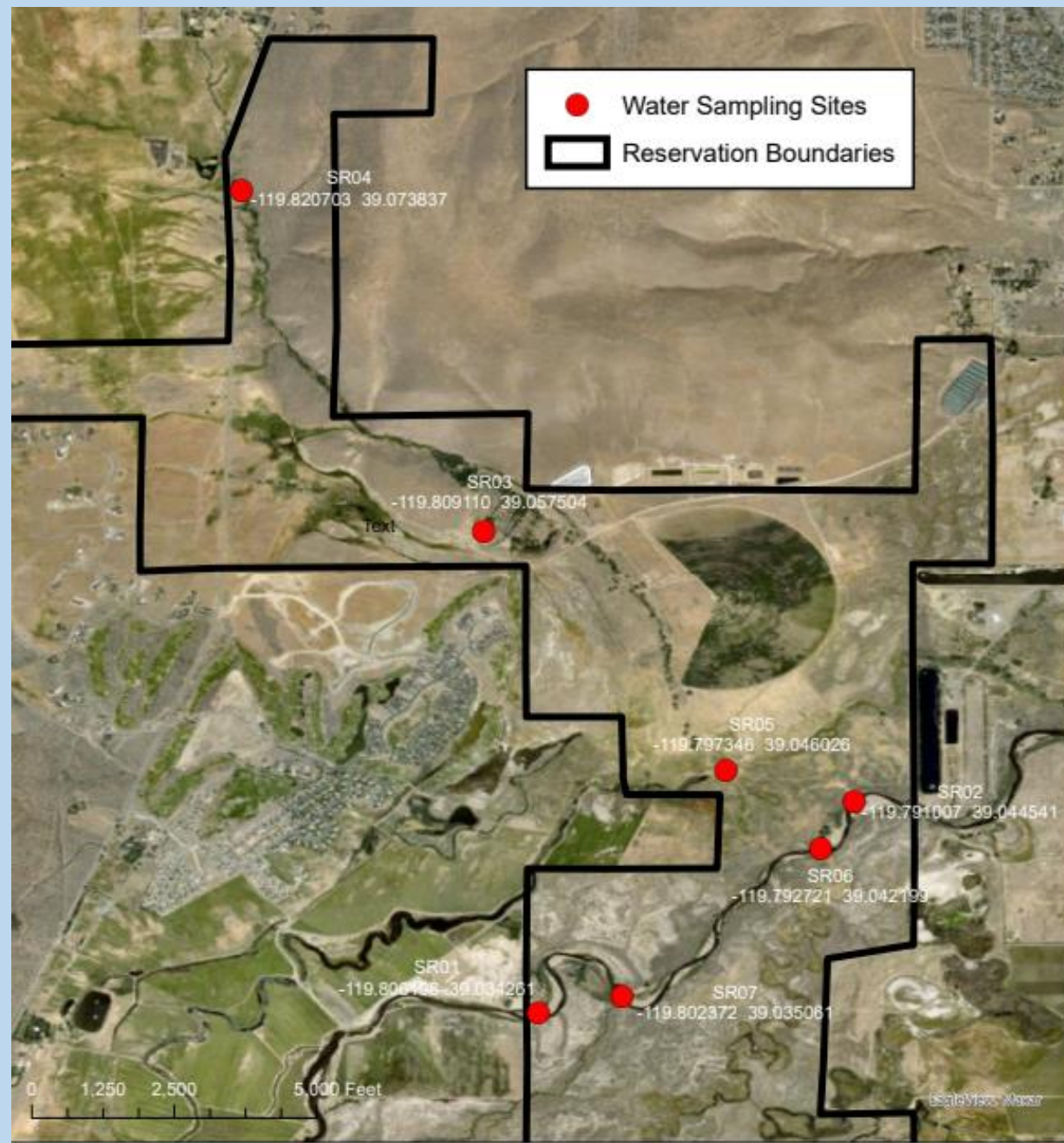
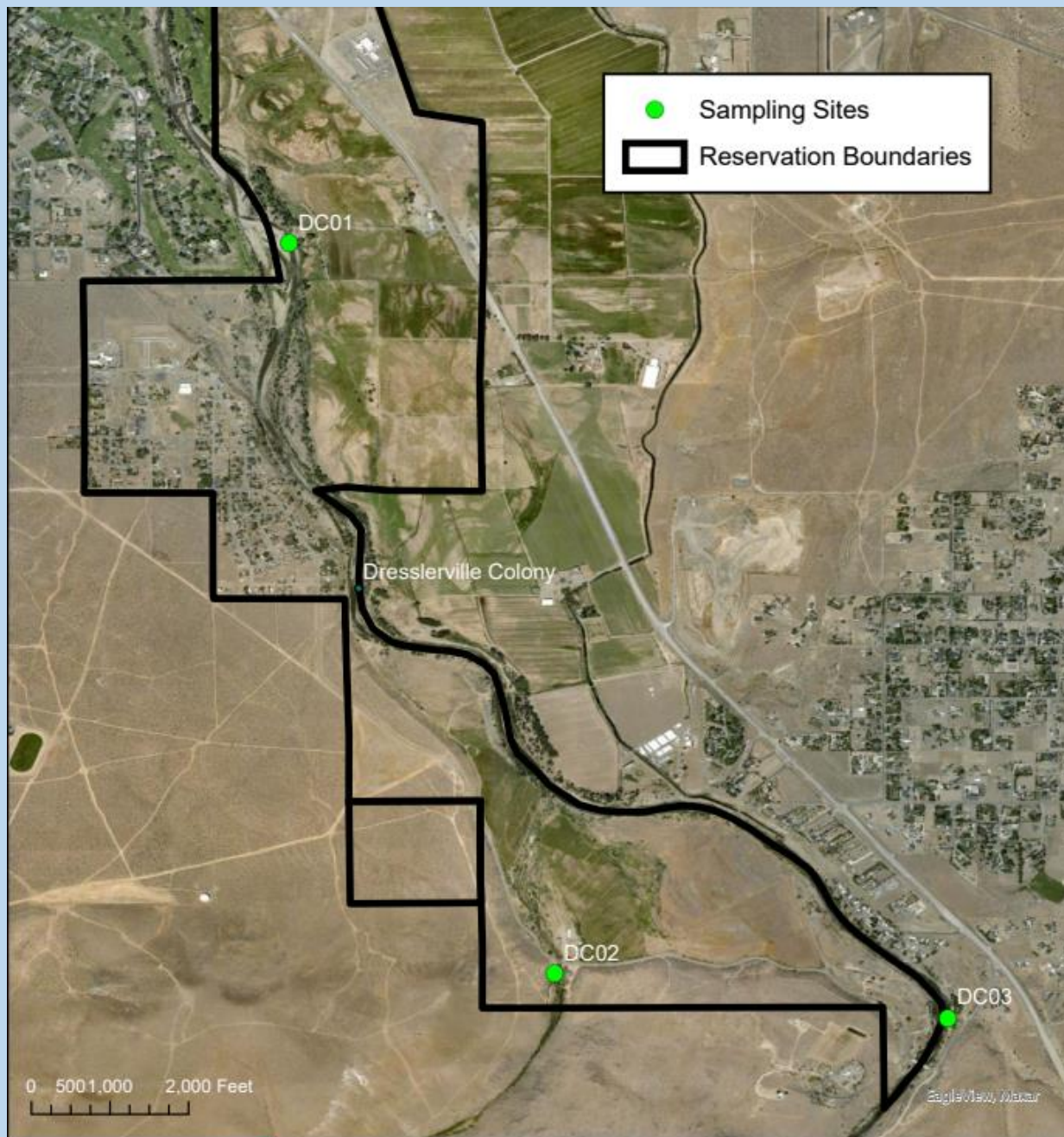
Rhiana Jones, Washoe
Environmental Protection,
Program Director



James Gatzke, Washoe
Environmental Protection,
Program Manager



Cale Pete, Washoe
Environmental
Protection
Department,
Environmental
Specialist







Past Washoe Tribe Carson River Projects

- NPS Pollution Project #2 at Mallard Bend – Carson River 2002 (EPA 319H)
- Willow species planted at low levels, then more shrubby plants (Silver buffalo berry, wild rose, and current.) Area needs more stabilization.
- No over story in the area.



Physical Site Visits / Tribal Council Involvement

- East Fork Carson River Restoration Work – Near WEPD offices.
- Work needed to be done due to losing Tribal land due to erosion.
- Bank was shaped, planted, and tail water irrigated.





