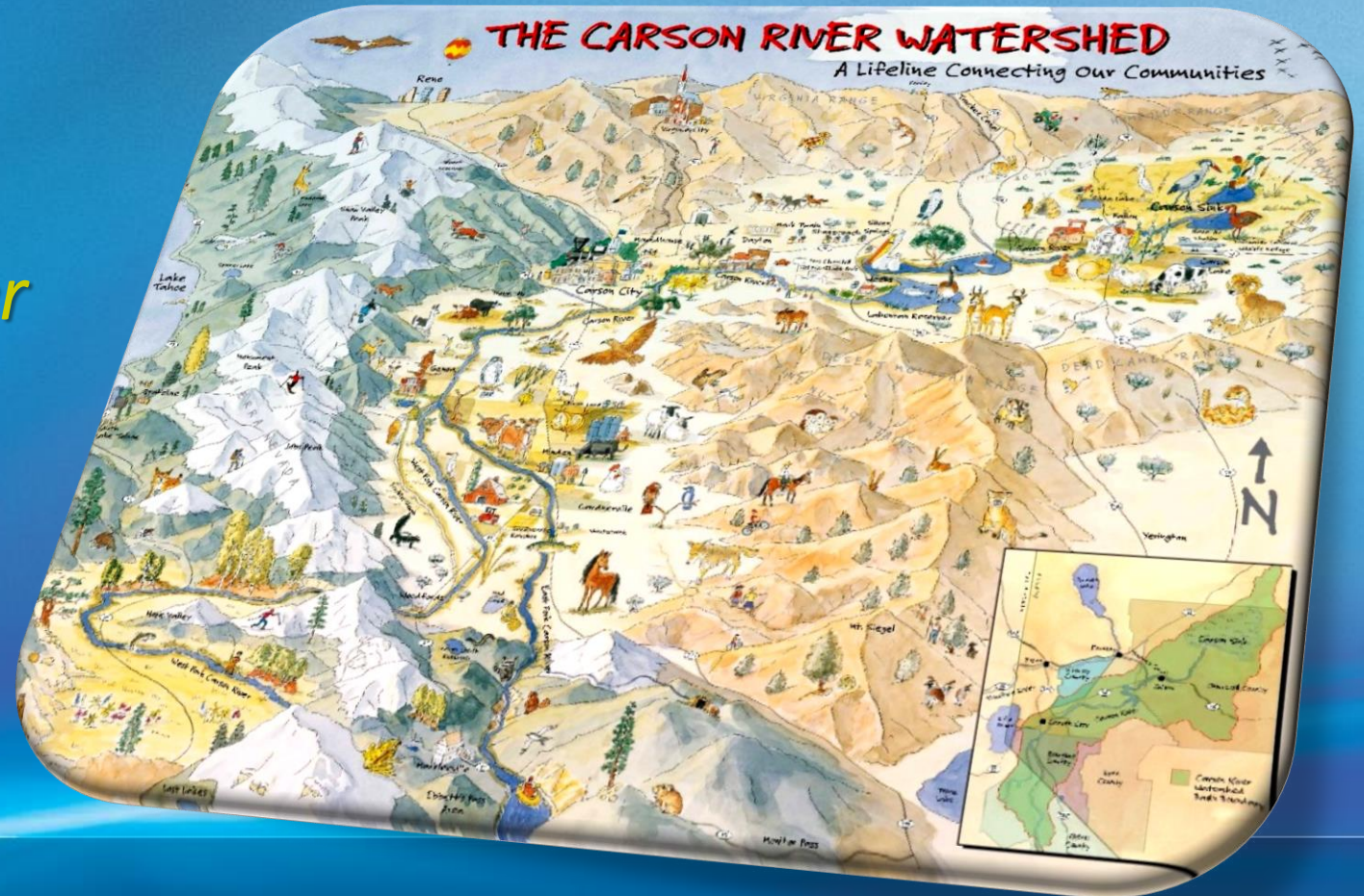
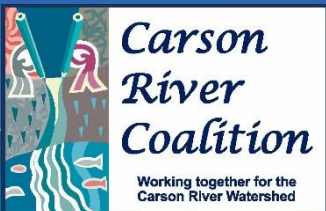


CRC Process and Carson River Watershed Adaptive Stewardship Plan

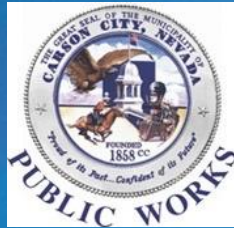
January 17, 2024

Brenda Hunt
Watershed Program Manager

Made possible by:



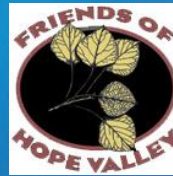
Carson River Coalition



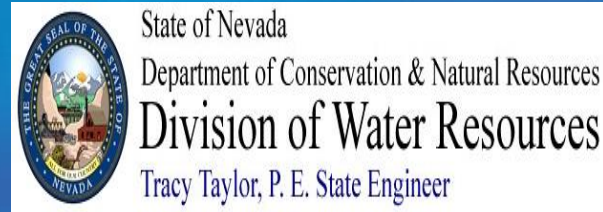
Conservation
Districts:
Carson Valley
Dayton Valley
Lahontan



CWMAs



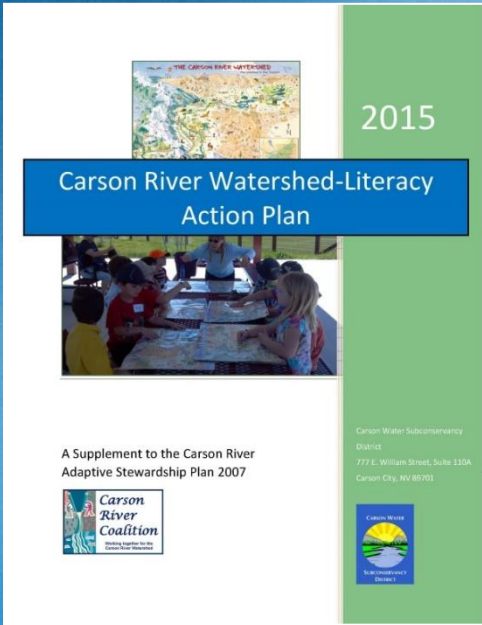
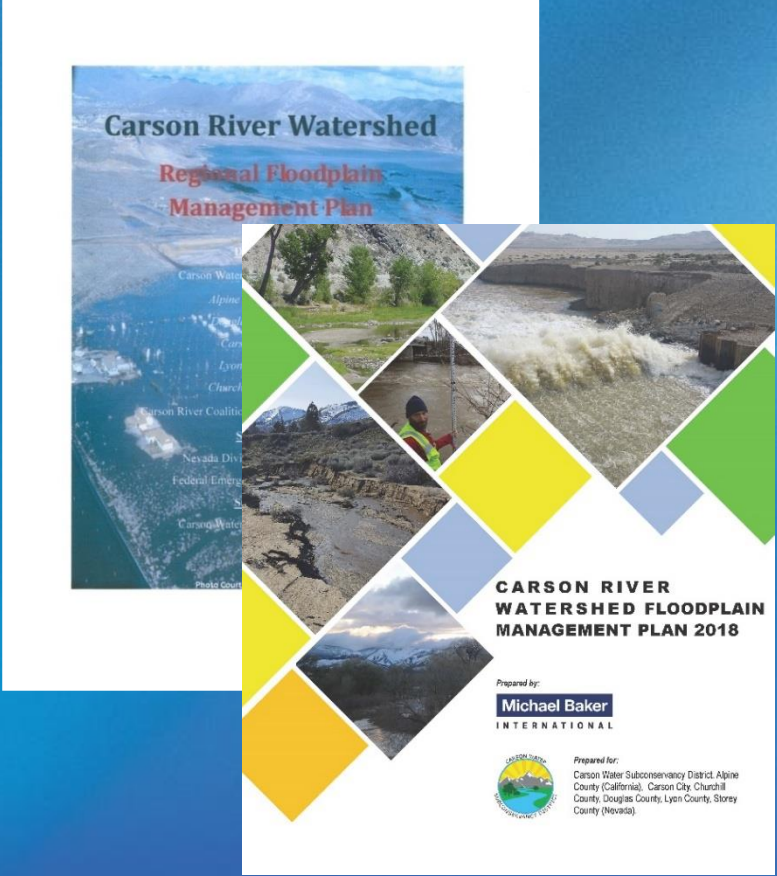
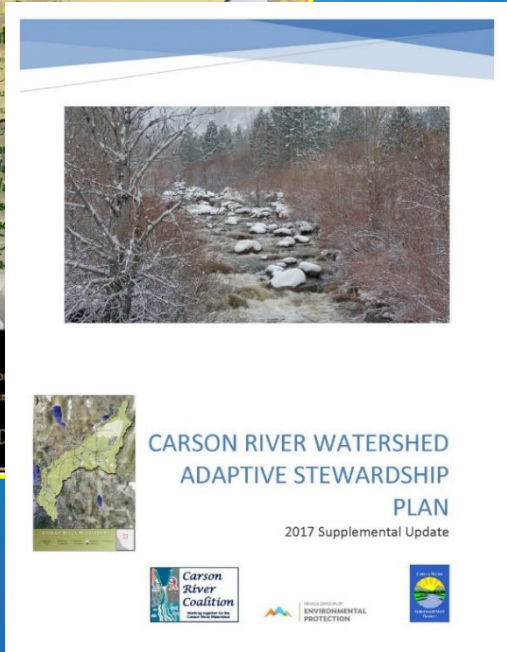
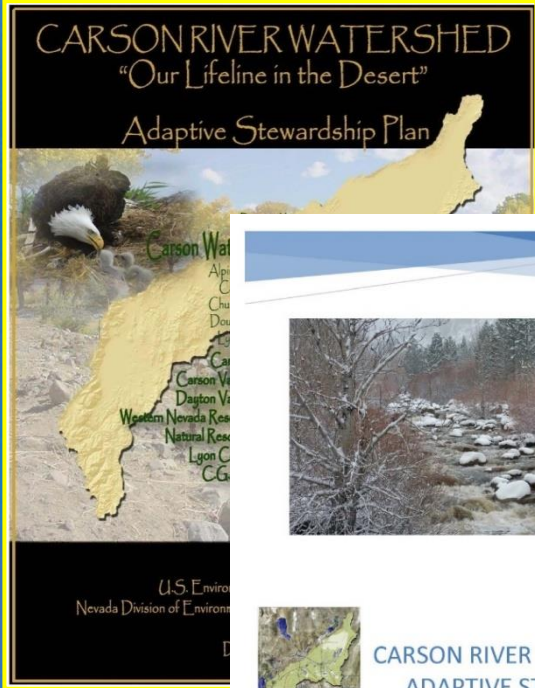
Private Citizens &
Producers



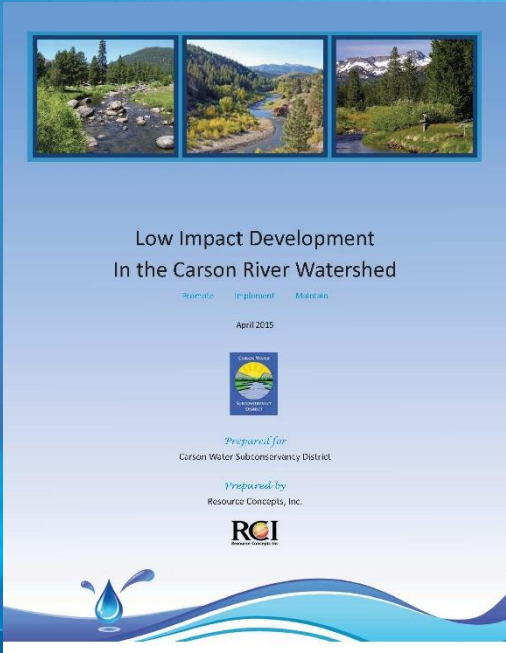
Current Challenges



Effective Planning



**Both Adopted by
CWSD in April
2015**



Both original (2007) and updated (2017/2018) Stewardship Plans meet EPA 319 criteria for watershed plans and were adopted by CWSD.

Formally adopted by all 5 counties along the Carson River in 2008 and 2018



Watershed Plan Purpose:

- Meets USEPA requirements for a watershed-based plan (NV Side).
- Provides priority access to NDEP's CWA 319(h) funding.
- Details Water Quality (WQ) impairment data and WQ objectives.
- Lists proposed projects and suggested actions for WQ improvements.
- Step toward achieving USEPA/CA Lahontan requirements for CA side).

[illegible]

- Floodplain Management
- River Restoration/Rehabilitation
- Water Quality
- Water Supply
- Invasive Species
- Outreach and Education
- Recreation

Chapter 8 Tables:

Critical Area Management Measures and Water Quality Objectives

| Critical Areas | Category 5 Impairment and/or TMDL parameters from Integrated Report | Potential Source | Recommended Management Measure to be implemented | Performance Indicator | Milestone measuring progress towards attaining WQ Objective |
|---|---|---|---|---|---|
| EF Carson River-Stateline to Genoa including Bryant Creek Mainstem Carson River Genoa Lane to Lahontan | TP, TSS, NTU, DO, T, Phosphorus TDS (Arsenic, Iron, Nickel-Bryant Creek only) | Hydrologic Modification – channel & flow alteration Sediment Transport from upstream | ❖ 250 linear feet of River bank stabilization, rehabilitation, floodplain restoration or revegetation per year (NV SMP Milestone) including weed removal and reseeding/revegetation. | ❖ 50 lbs/yr TP & 50 tons/yr TSS kept out of river ❖ (R5 model estimate) | Decreasing trend in concentration or standard/TMDL exceedance |
| | | Urban Development & Runoff | ❖ Implement at least one LID/urban runoff project in the next 5 years | ❖ Determine appropriate load reduction as part of LID/urban runoff infrastructure project | |
| | | Agriculture – crop & livestock management | ❖ Install cattle exclusions along River and irrigation return flow ditches where appropriate and if feasible ❖ Install stock watering systems ❖ Floodplain remains agricultural, removed from development, established as a conservation easement or designated as open space where feasible. | ❖ Feet of fencing installed ❖ # of stock water systems installed ❖ Increase in acres of floodplain preserved or conserved above 2015 baseline | |
| | | | | | |

| Table 8.3 Proposed Projects | | | | | | |
|---|--------------------------------------|--|--|--|----------------------------|------------------|
| Critical Area*/Tributary Reach/ Project Area | Interfluve Sub-Reach** | Project Title/Description | Project Manager & Partners ***** | Estimated Completion Date | Estimated Completion Costs | Map I.D. Code*** |
| Floodplain Management/Meadow Restoration Projects | | | | | | |
| Alpine County | | | | | | |
| West Fork Carson River Headwaters to Paynesville* | N/A | Upper Hope Valley Meadow Restoration and Aquatic Habitat Enhancement - Implementation | USFS, CWSD, AWG, FOHV, Alpine County, American Rivers, Trout Unlimited | Contingent upon funding availability | \$243,870 | AWG-5 |
| Markleeville Creek/ Upper East Fork Carson River* | N/A | Markleeville Creek Floodplain Restoration Project (Floodplain restoration/river rehabilitation) - Implementation | Alpine County, Alpine Watershed Group, Markleeville Public Utility District, U.S. Forest Service | Contingent upon funding availability | \$1,750,000 | AWG-1 |
| Also See River Rehabilitation | | | | | | |
| Douglas County | | | | | | |
| EF Carson River Stateline to Genoa | E-5,E-6 88 to Muller Muller to Genoa | Park Property Potential Conservation Easement for Floodplain & Riparian Corridor Preservation | Private Property Owner, Legacy Land & Water, TNC, Douglas County | Contingent upon easement agreement & funding | TBD | TBD |

**Carson River Adaptive Stewardship Plan Suggested Actions
for Future Management and Implementation**

| SA- # | Critical Area | Suggested Action | Responsible or Suggested Responsible Party | Potential Funding Sources |
|---|----------------|--|---|---|
| Floodplain Conservation | | | | |
| SA-1 | Watershed wide | Continue to implement Carson River Floodplain Management Plan 2008 and supplemental update 2013 Summary of Suggested Actions Table 4.7-1, pages 52-55 and any adopted updates. | CWSD, Counties, Other agencies | FEMA, CWSD, Counties, other relevant entities |
| SA-2 | Watershed wide | Continue to implement Carson River Discovery Report 2012 Recommended Watershed Projects Table and any adopted updates. | CWSD, Counties, Other agencies | FEMA, CWSD, Counties, other relevant entities |
| SA-3 | Watershed wide | Complete projects outlined in Current and Proposed Project Tables 8.3-8.7 relating to Floodplain/ Meadow Conservation | Relevant entities | Relevant entities |
| | | | | |
| River Rehabilitation/Stabilization | | | | |
| SA-4 | Watershed Wide | Evaluate Carson River diversion structures to determine the feasibility and priority of replacement/retrofitting with permanent structures that transport sediment, allow fish passage, and provide recreational boat passage. | CWSD, NDOW, NDEP | NRCS, NDOW, CWSD, NDEP |
| SA-5 | Watershed Wide | Investigate what type or level of sediment transport study would be feasible for the Carson River. | CWSD, NDEP, USACE | CWSD, NDEP |
| SA-6 | Watershed Wide | Identify priority areas requiring bank stabilization/rehabilitation within each County's river and tributary reaches. | CWSD, Counties, Conservation Districts, NGO, Ag Community | CWSD, NDEP, NRCS, NDOW, FEMA, EPA |

Workshop Preview



Questions?

